

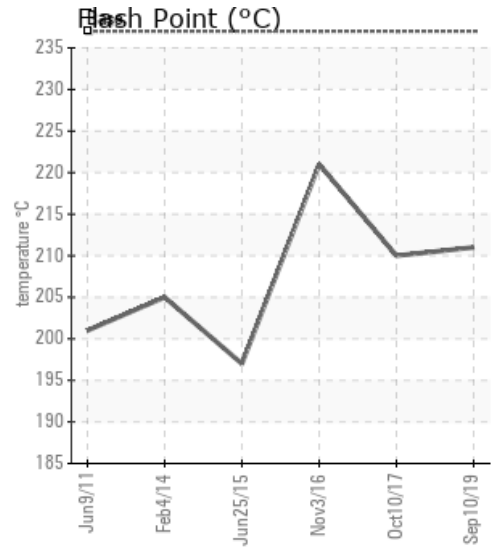
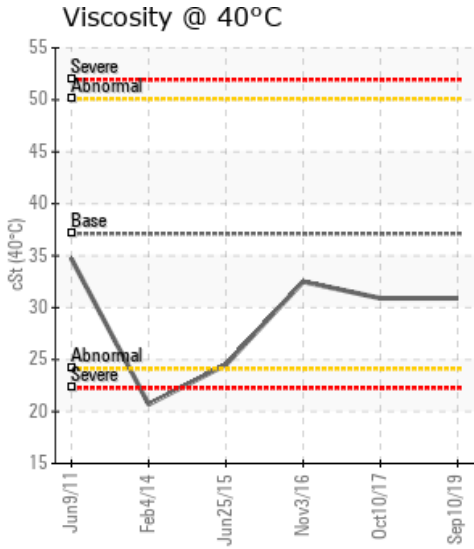
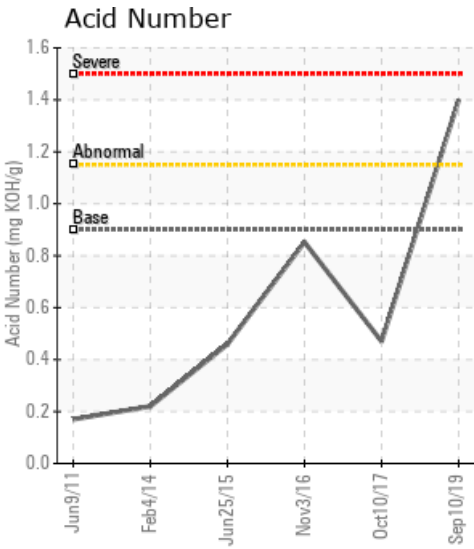
INTEC

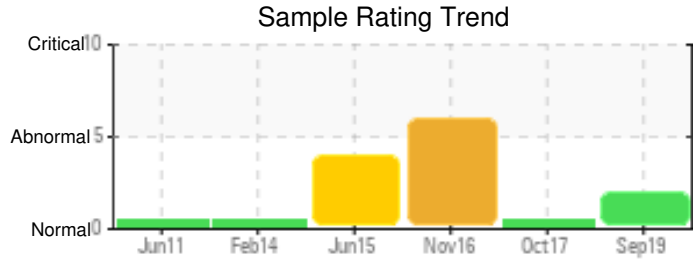
Customer: PTRHTF40005	System Information	Sample Information
BBS CONVENIENCE FOOD BV HANZEWEWEG 22 BARNEODD, Netherlands Attn: WILBERT SNIJERS Tel: E-Mail: w.snijers@klt.nl	System Volume: 1600 ltr Bulk Operating Temp: 300F / 149C Heating Source: Blanket: Fluid: PETRO CANADA PURITY FG HEAT TRANSFER FLUID Make:	Lab No: 02309319 Analyst: Philip Riley Sample Date: 09/10/19 Received Date: 09/19/19 Completed: 10/02/19

Recommendation: Acid number high likely linked to the insoluble increase. Other parameters within general specification. Please observe condition of fluid for further deterioration, sample at 50% of normal frequency, to determine condition with view to change if necessary

Comments: Pentane Insolubles levels are abnormally high. Acid Number (AN) is abnormally high.

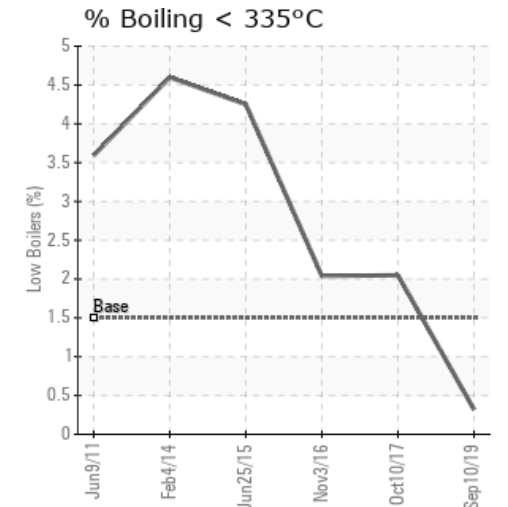
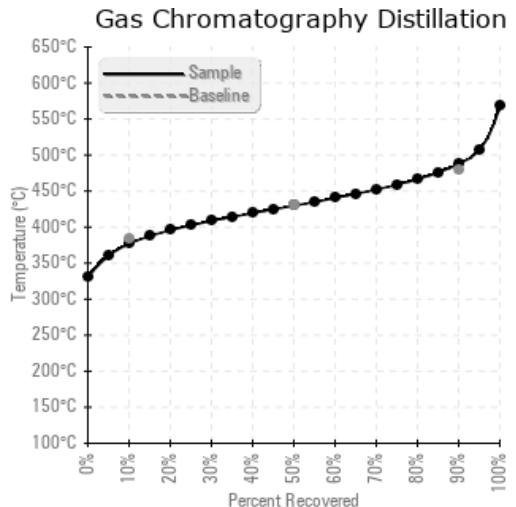
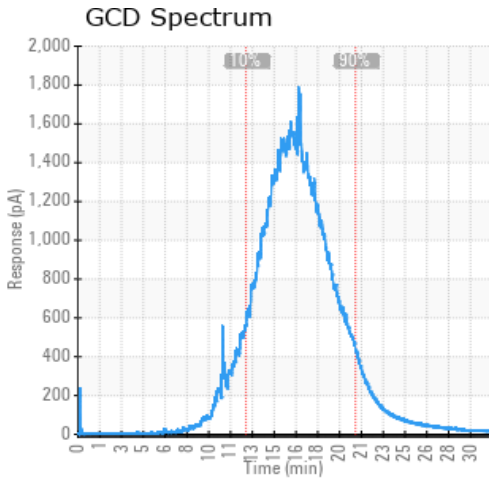
Sample Date	Received Date	Fluid Age	Sample Location	Flash Point (COC)	Water (KF)	Viscosity (40°C)	Acid Number	Solids	GCD 10%	GCD 50%	GCD 90%	GCD % < 335°C
	mm/dd/yy			°F/°C	ppm	cSt	mg/KOH/g	%wt	°F/°C	°F/°C	°F/°C	%
09/10/19	09/19/19	4y		412 / 211	37.1	30.9	1.40	0.549	710 / 377	805 / 430	910 / 488	0.32
10/10/17	10/23/17	2y		410 / 210	23.3	30.9	0.47	0.251	691 / 366	791 / 422	903 / 484	2.05
11/03/16	11/11/16	3y		430 / 221	29.4	32.5	0.852	0.917	691 / 366	792 / 422	896 / 480	2.04
06/25/15	07/02/15	2y		387 / 197	84.9	24.5	0.459	1.60	664 / 351	769 / 409	864 / 462	4.25
02/04/14	02/07/14	15y	PTRHTF40005	401 / 205	85.4	20.7	0.22	1.85	661 / 349	762 / 406	843 / 451	4.60
06/09/11	06/22/11		BP TRANCAL N	394 / 201	111	34.7	0.17	0.310	711 / 377	795 / 424	867 / 464	3.593
Baseline Data				459 / 237		37.12	0.90		721 / 383	807 / 431	892 / 478	1.5





Sample Date	Iron	Chromium	Nickel	Aluminum	Copper	Lead	Tin	Cadmium	Silver	Vanadium	Silicon	Sodium	Potassium	Titanium	Molybdenum	Antimony	Manganese	Lithium	Boron	Magnesium	Calcium	Barium	Phosphorus	Zinc
09/10/19	31	0	0	0	0	0	0	0	0	0	0	0	0	0	0	0	0	0	0	0	0	18	129	0
10/10/17	3	0	0	0	0	0	0	0	0	0	0	0	0	0	0	0	0	0	0	0	0	3	131	0
11/03/16	36	0	0	0	1	0	0	0	0	0	2	2	0	0	0	0	0	0	0	0	0	51	143	3
06/25/15	138	0	0	0	0	0	0	0	0	0	0	4	0	0	0	0	2	0	0	0	5	189	0	5
02/04/14	89	0	0	0	0	0	0	0	0	0	0	4	0	0	0	0	2	0	0	0	5	179	2	3
06/09/11	105	0	0	0	0	0	0	0	0	0	0	1	2	0	0	0	1	0	0	0	13	610	0	5
Baseline Data				0	0					0			0	0					0				230	

Elemental analysis results (above) in parts per million (ppm). [10,000 ppm = 1.0%]



Historical Comments	
10/10/17	Has fluid been changed since last sample? Fluid looks in good condition and fit for further use
11/03/16	The oil is not a Petro-Canada Product. Pentane Insolubles levels are severely high. Acid Number (AN) is severely high. Barium ppm levels are severely high.
06/25/15	Product does not appear to be a Petro-Canada product. Pentane Insolubles levels are severely high. Barium ppm levels are severely high. Acid Number (AN) is abnormally high.
02/04/14	Insolubles are high and there appears to be contamination and viscosity has dropped significantly. Suggest prepare for an oil change during the next service interval. Pentane Insolubles levels are severely high. COC Flash Point is severely high. Barium ppm levels are severely high. Visc @ 40°C is severely low.
06/09/11	

Petro-Canada makes no representation or warranty of any kind, either express or implied, as to the accuracy or completeness of the analysis and assumes no responsibility and shall have no liability whatsoever with respect to such analysis, or a party's use of it. Petro-Canada is a division of HollyFrontier Corporation.