

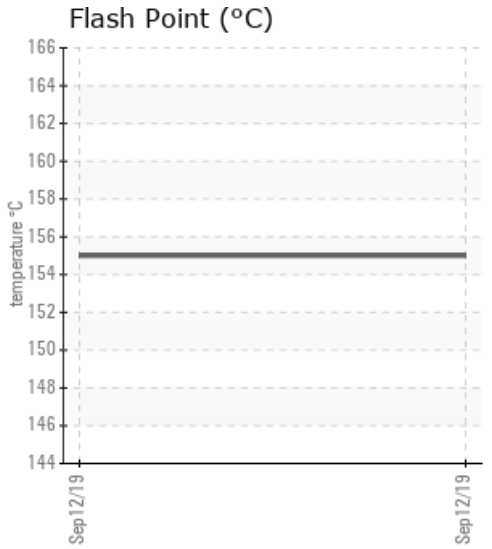
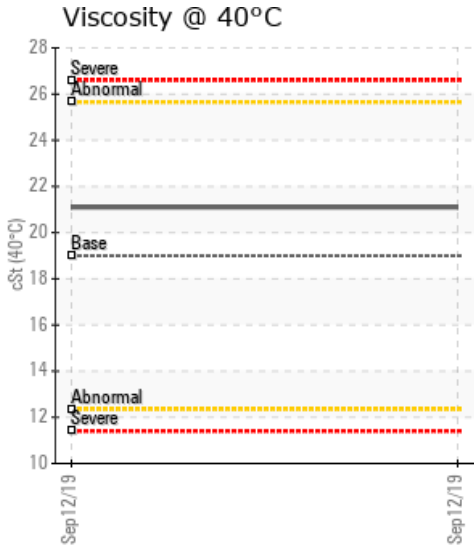
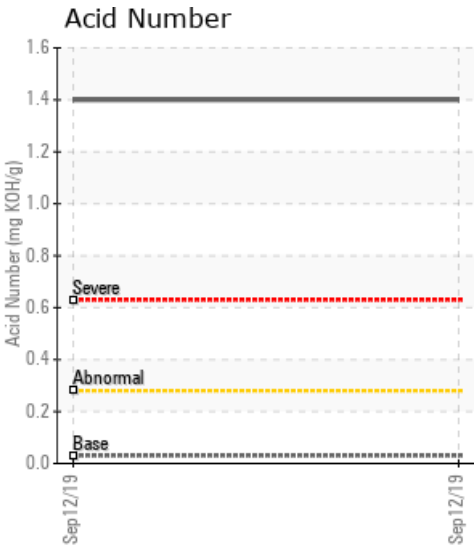
MAYER RESIN CO. RETURN

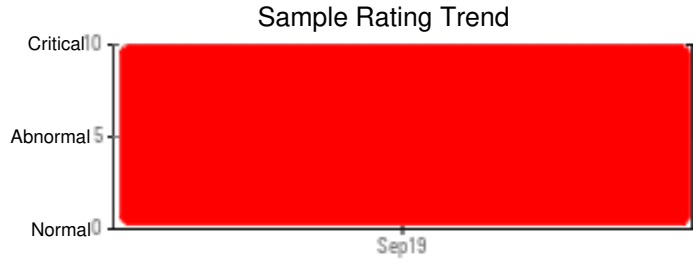
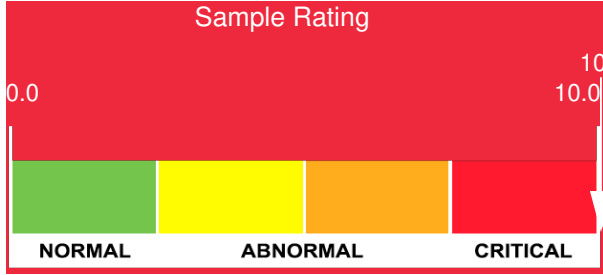
| Customer: PTRHTF60010 | System Information | Sample Information |
|---|--|--|
| SYNLUBE INTERNATIONAL CO LTD 76/1 MOO.7 THACHIN MUANG SAMUTSAKHON, 74000 THAILAND Attn: Kittisak Suthithanakom Tel: 6(681)850-1907 E-Mail: kittisak@synlube.co.th | System Volume: 2400 ltr Bulk Operating Temp: 536F / 280C Heating Source: Blanket: Fluid: EASTMAN THERMINOL 55 Make: LI-FONG | Lab No: 02310210 Analyst: Philip Riley Sample Date: 09/12/19 Received Date: 09/23/19 Completed: 10/09/19 |

Recommendation: Not Petro-Canada product. Appears in poor condition with respect to degradation and recommend a change, clean and flush as part of a conversion to Petro-Canada product. Please advise system conditions for best recommendation of product

Comments: PQ levels are severe. Iron ppm levels are abnormal. Pentane Insolubles levels are severely high. (GCD) % < 335°C is severely high. Acid Number (AN) is severely high. (GCD) 10% Distillation Point is severely low. (GCD) 90% Distillation Point is abnormally high.

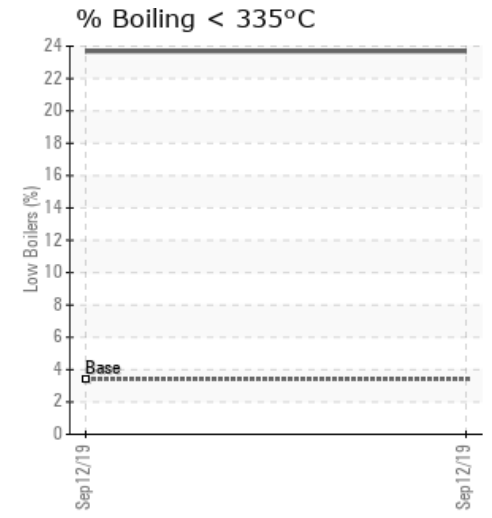
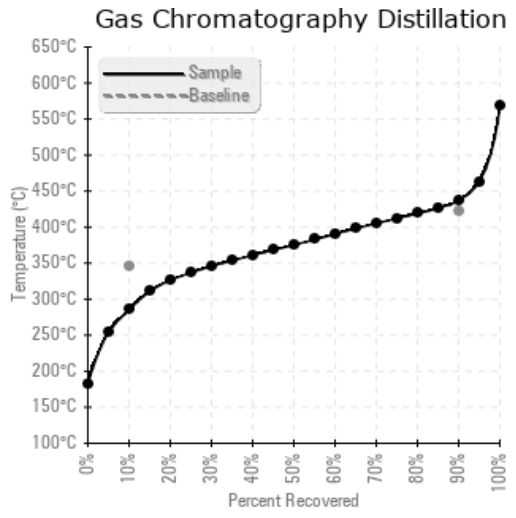
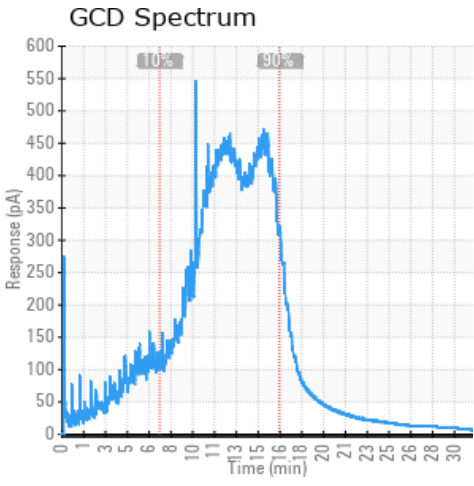
| Sample Date | Received Date | Fluid Age | Sample Location | Flash Point (COC) | Water (KF) | Viscosity (40°C) | Acid Number | Solids | GCD 10% | GCD 50% | GCD 90% | GCD % < 335°C |
|---------------|---------------|-----------|-----------------|-------------------|------------|------------------|-------------|--------|-----------|-----------|-----------|---------------|
| | mm/dd/yy | | | °F/°C | ppm | cSt | mg/KOH/g | %wt | °F/°C | °F/°C | °F/°C | % |
| 09/12/19 | 09/23/19 | 5y | RETURN LINE | 311 / 155 | 103.2 | 21.1 | 1.40 | 3.82 | 545 / 285 | 707 / 375 | 818 / 437 | 23.69 |
| Baseline Data | | | | 349 / 176 | | 19.0 | 0.03 | | 655 / 346 | | 790 / 421 | 3.40 |





| Sample Date | Iron | Chromium | Nickel | Aluminum | Copper | Lead | Tin | Cadmium | Silver | Vanadium | Silicon | Sodium | Potassium | Titanium | Molybdenum | Antimony | Manganese | Lithium | Boron | Magnesium | Calcium | Barium | Phosphorus | Zinc |
|---------------|------|----------|--------|----------|--------|------|-----|---------|--------|----------|---------|--------|-----------|----------|------------|----------|-----------|---------|-------|-----------|---------|--------|------------|------|
| 09/12/19 | 221 | 0 | 0 | 0 | 0 | 0 | 0 | 0 | 0 | 0 | 0 | 0 | 0 | 0 | 0 | 0 | 2 | 0 | 1 | 0 | 2 | 1 | 0 | 2 |
| Baseline Data | | | 0 | 0 | | | | | | 0 | | | 0 | 0 | | | | 0 | | | | | 0 | |

Elemental analysis results (above) in parts per million (ppm). [10,000 ppm = 1.0%]



Historical Comments

| |
|--|
| |
| |
| |
| |
| |

Petro-Canada makes no representation or warranty of any kind, either express or implied, as to the accuracy or completeness of the analysis and assumes no responsibility and shall have no liability whatsoever with respect to such analysis, or a party's use of it. Petro-Canada is a division of HollyFrontier Corporation.