

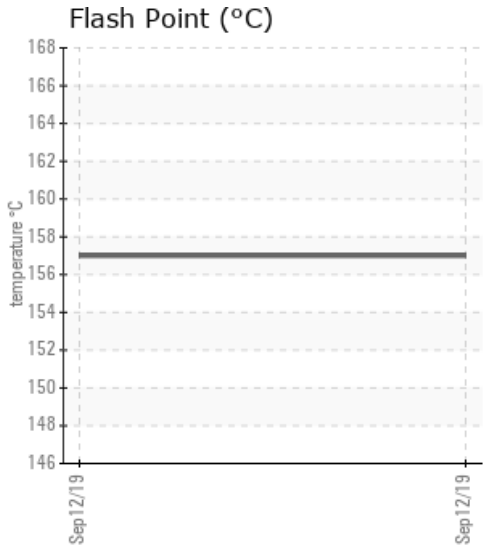
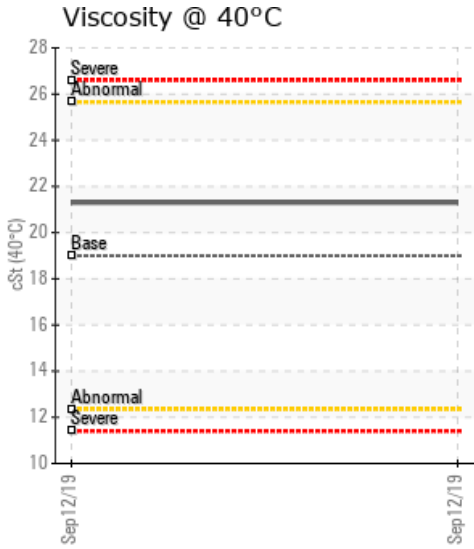
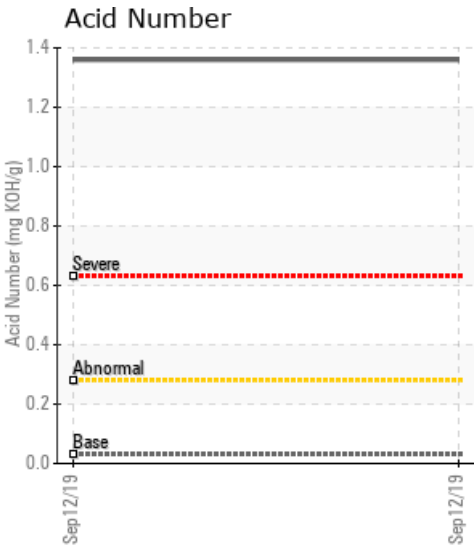
MAYER RESIN CO. SUPPLY

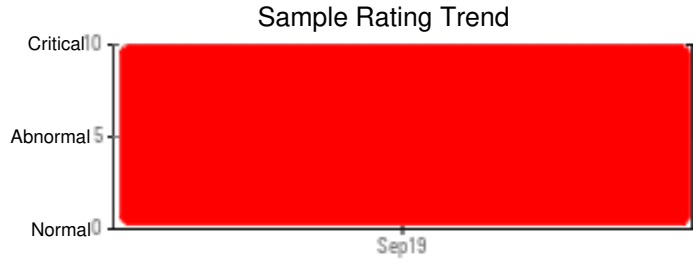
Customer: PTRHTF60010	System Information	Sample Information
SYNLUBE INTERNATIONAL CO LTD 76/1 MOO.7 THACHIN MUANG SAMUTSAKHON, 74000 THAILAND Attn: Kittisak Suthithanakom Tel: 6(681)850-1907 E-Mail: kittisak@synlube.co.th	System Volume: 2400 ltr Bulk Operating Temp: 536F / 280C Heating Source: Blanket: Fluid: EASTMAN THERMINOL 55 Make: LI-FONG	Lab No: 02310211 Analyst: Philip Riley Sample Date: 09/12/19 Received Date: 09/23/19 Completed: 10/09/19

Recommendation: Not Petro-Canada product. Appears in poor condition with respect to degradation and recommend a change, clean and flush as part of a conversion to Petro-Canada product. Please advise system conditions for best recommendation of product

Comments: PQ levels are severe. Iron ppm levels are abnormal. Pentane Insolubles levels are severely high. (GCD) % < 335°C is severely high. Acid Number (AN) is severely high. (GCD) 90% Distillation Point is severely high. (GCD) 10% Distillation Point is abnormally low.

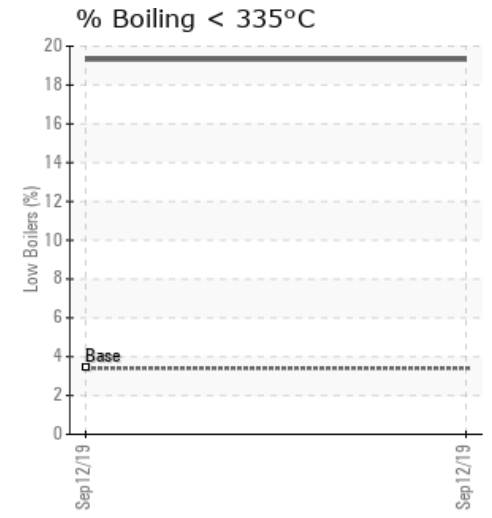
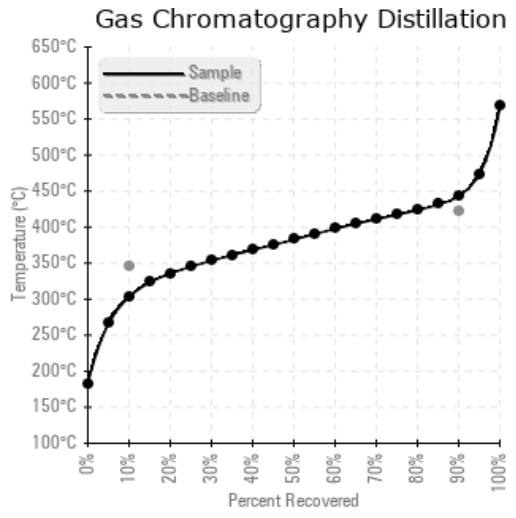
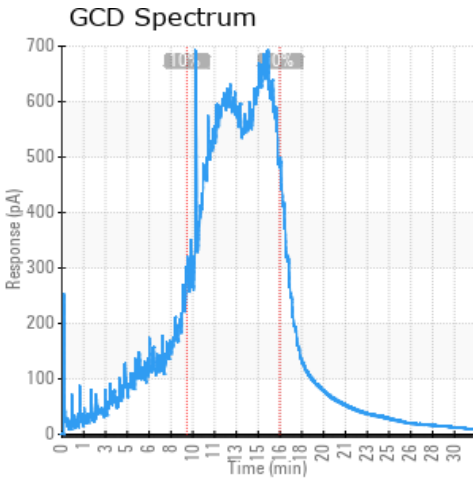
Sample Date	Received Date	Fluid Age	Sample Location	Flash Point (COC)	Water (KF)	Viscosity (40°C)	Acid Number	Solids	GCD 10%	GCD 50%	GCD 90%	GCD % < 335°C
	mm/dd/yy			°F/°C	ppm	cSt	mg/KOH/g	%wt	°F/°C	°F/°C	°F/°C	%
09/12/19	09/23/19	5y	SUPPLY LINE	315 / 157	92.2	21.3	1.36	3.52	577 / 303	721 / 383	829 / 443	19.32
Baseline Data				349 / 176		19.0	0.03		655 / 346		790 / 421	3.40





Sample Date	Iron	Chromium	Nickel	Aluminum	Copper	Lead	Tin	Cadmium	Silver	Vanadium	Silicon	Sodium	Potassium	Titanium	Molybdenum	Antimony	Manganese	Lithium	Boron	Magnesium	Calcium	Barium	Phosphorus	Zinc
09/12/19	222	0	0	0	0	0	0	0	0	0	0	0	0	0	0	0	2	0	1	0	2	1	0	2
Baseline Data			0	0						0			0	0				0					0	

Elemental analysis results (above) in parts per million (ppm). [10,000 ppm = 1.0%]



Historical Comments

Petro-Canada makes no representation or warranty of any kind, either express or implied, as to the accuracy or completeness of the analysis and assumes no responsibility and shall have no liability whatsoever with respect to such analysis, or a party's use of it. Petro-Canada is a division of HollyFrontier Corporation.