

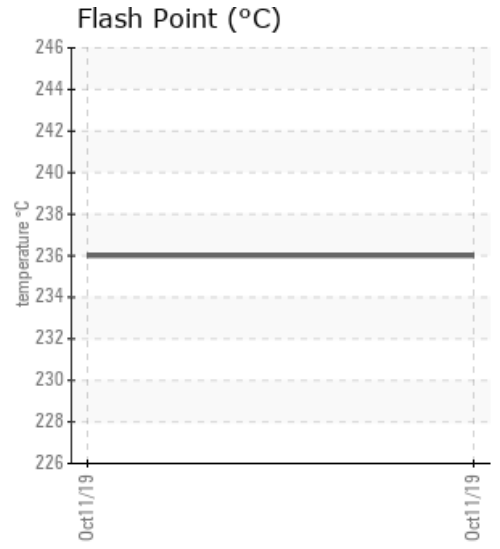
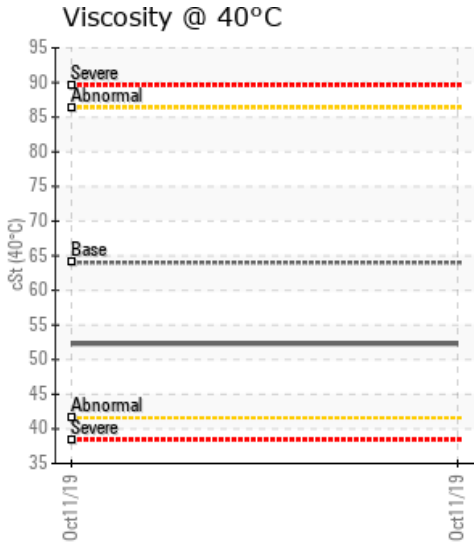
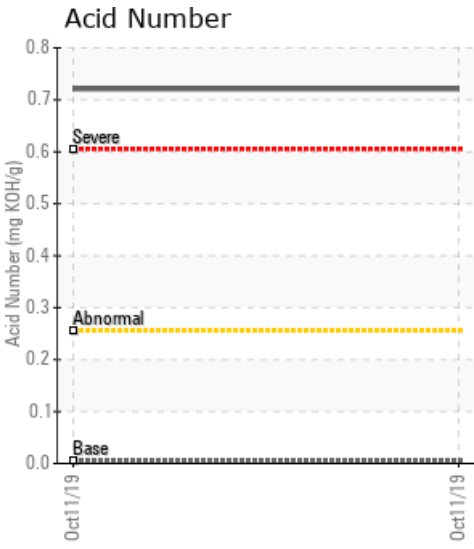
PRESSE 30

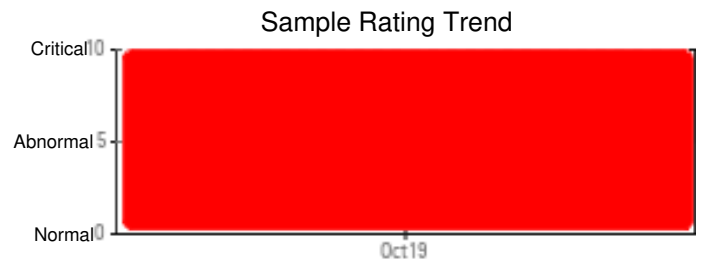
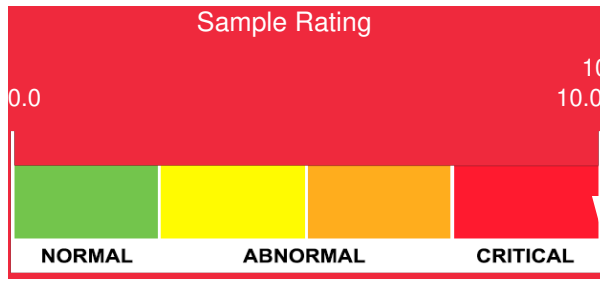
Customer: PTRHTF30007	System Information	Sample Information
COMMONWEALTH PLYWOOD ROUTE 117 STE-THERESE, QC J7E 4H9 CANADA Attn: Carl Desforges Tel: (450)821-3197 E-Mail: desforgesCarl@commonwealthplywood.com	System Volume: 4000 ltr Bulk Operating Temp: 208F / 98C Heating Source: Blanket: Fluid: SHELL THERMIA OIL C Make: CLEVER BROOK	Lab No: 02314436 Analyst: Pierre Castagne Sample Date: 10/11/19 Received Date: 10/15/19 Completed: 10/28/19

Recommendation: Les niveaux de ppm de fer sont sévères. Les niveaux de PQ sont sévères. Les niveaux de contamination de l'eau sont extrêmement élevés. Les niveaux de pentane sont très élevés. L'indice d'acide (AN) est extrêmement élevés. Les fractions lourdes (GCD) @90% est marginalement élevé. Je vous recommande de vidanger le fluide caloporteur, de nettoyer le système, et de remettre une nouvelle charge de fluide caloporteur.

Comments: Iron ppm levels are severe. PQ levels are severe. Water contamination levels are severely high. Water contamination levels are severely high.. ppm Water contamination levels are severely high. Pentane Insolubles levels are severely high. Acid Number (AN) is severely high. (GCD) 90% Distillation Point is marginally high.

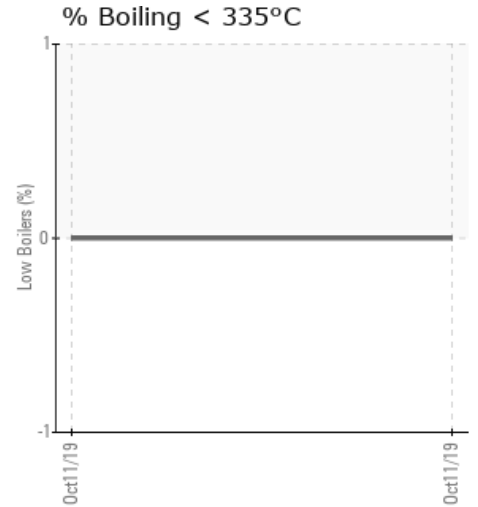
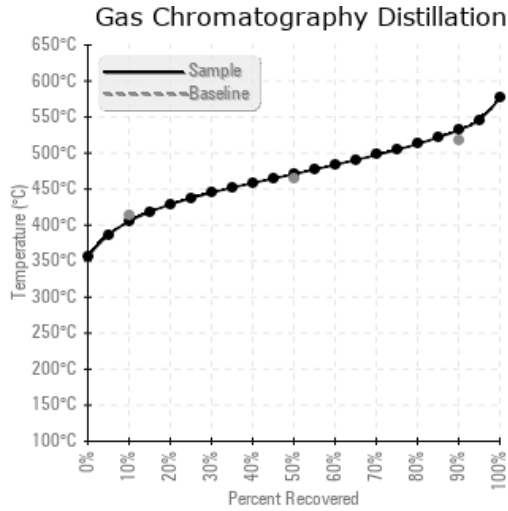
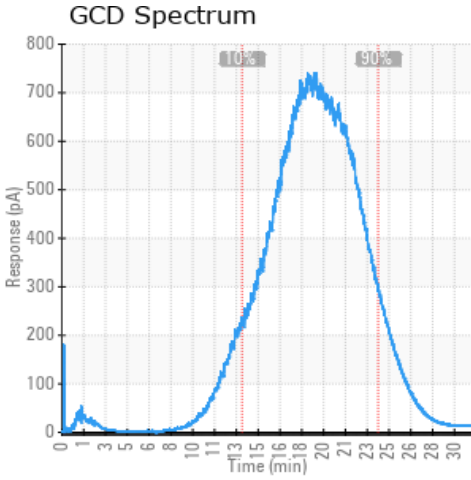
Sample Date	Received Date	Fluid Age	Sample Location	Flash Point (COC)	Water (KF)	Viscosity (40°C)	Acid Number	Solids	GCD 10%	GCD 50%	GCD 90%	GCD % < 335°C
	mm/dd/yy			°F/°C	ppm	cSt	mg/KOH/g	%wt	°F/°C	°F/°C	°F/°C	%
10/11/19	10/15/19	15m	SUCCION LINE	457 / 236	6828.1	52.3	0.721	1.42	761 / 405	879 / 471	989 / 532	0.00
Baseline Data				500 / 260		64	0.005		777 / 414	867 / 464	964 / 518	0.00





Sample Date	Iron	Chromium	Nickel	Aluminum	Copper	Lead	Tin	Cadmium	Silver	Vanadium	Silicon	Sodium	Potassium	Titanium	Molybdenum	Antimony	Manganese	Lithium	Boron	Magnesium	Calcium	Barium	Phosphorus	Zinc
10/11/19	2218	2	0	0	5	0	0	0	0	0	3	5	1	0	0	0	15	0	2	0	8	0	2	3
Baseline Data			0	0						0			0	0					0				0	

Elemental analysis results (above) in parts per million (ppm). [10,000 ppm = 1.0%]



Historical Comments

Petro-Canada makes no representation or warranty of any kind, either express or implied, as to the accuracy or completeness of the analysis and assumes no responsibility and shall have no liability whatsoever with respect to such analysis, or a party's use of it. Petro-Canada is a division of HollyFrontier Corporation.