

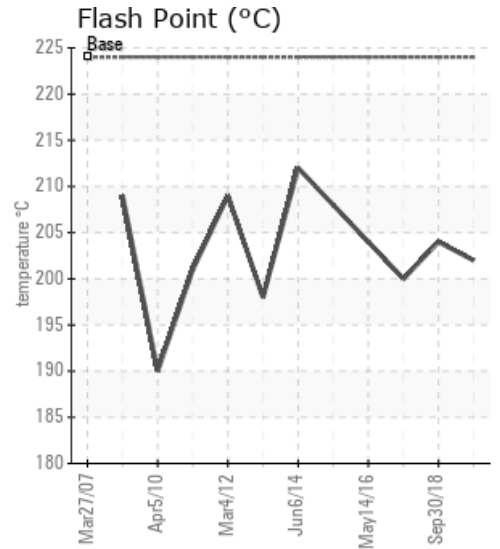
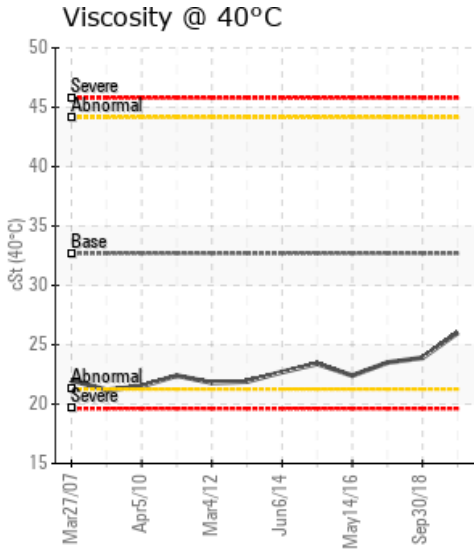
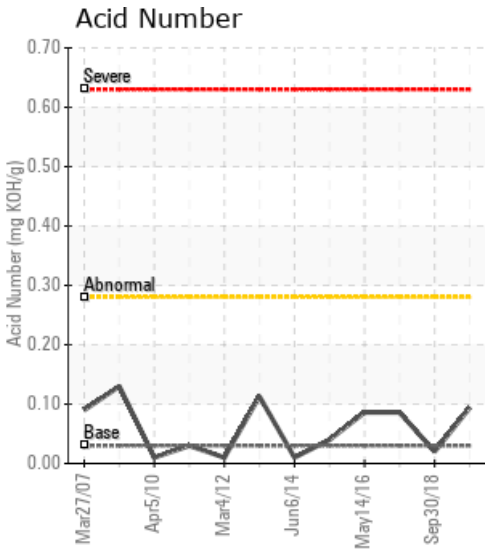
MODIFIED ROOM HOT OIL SYSTEM

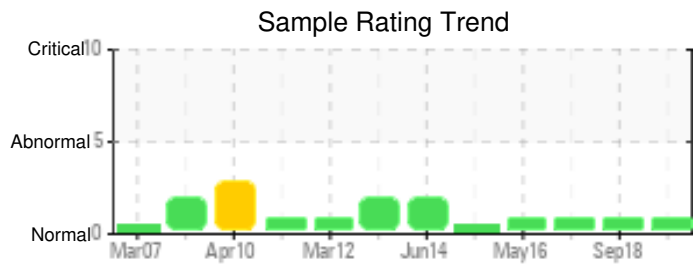
Customer: PTRHTF10069	System Information	Sample Information
CERTAINTEED - SAINT GOBAIN 3303 EAST 4TH AVENUE SHAKOPEE, MN 55379 USA Attn: Patrick Wallace Tel: E-Mail: patrick.wallace@saint-gobain.com	System Volume: 4158 gal Bulk Operating Temp: 500F / 260C Heating Source: Blanket: Fluid: PETRO CANADA CALFLO AF Make:	Lab No: 02315482 Analyst: Gaston Arseneault Sample Date: 09/24/19 Received Date: 10/21/19 Completed: 11/12/19 Gaston Arseneault gaston.arseneault@hollyfrontier.com

Recommendation: The oil is holding steady with the properties remaining normal from sample to sample. Contamination by asphalt, water or other elements is insignificant or non-detectable. No actions needed at this time. Re-sample at next scheduled interval

Comments: (GCD) 90% Distillation Point is marginally low.

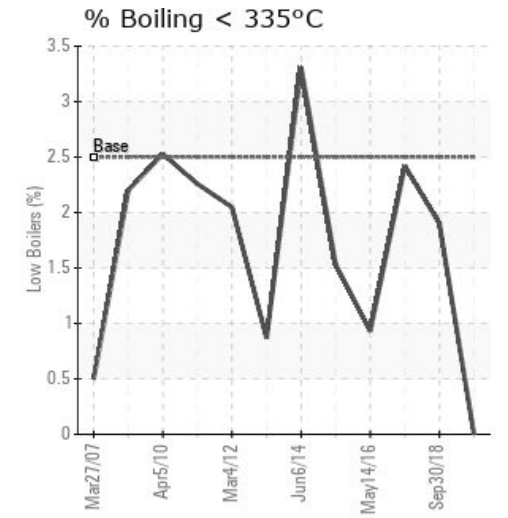
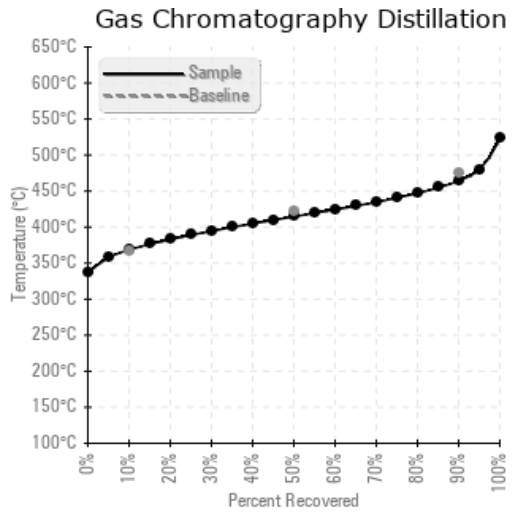
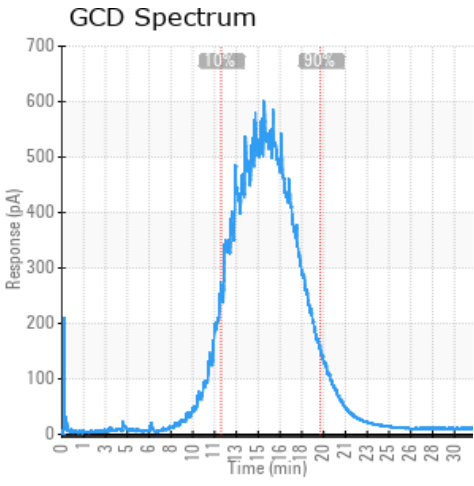
Sample Date	Received Date	Fluid Age	Sample Location	Flash Point (COC)	Water (KF)	Viscosity (40°C)	Acid Number	Solids	GCD 10%	GCD 50%	GCD 90%	GCD % < 335°C
	mm/dd/yy			°F/°C	ppm	cSt	mg/KOH/g	%wt	°F/°C	°F/°C	°F/°C	%
09/24/19	10/21/19	0.0y	MAIN SYSTEM FLOW	396 / 202	19.1	26.0	0.094	0.093	695 / 368	778 / 415	868 / 464	0.00
09/30/18	10/10/18	0.0y		399 / 204	17.0	23.9	0.02	0.028	674 / 357	754 / 401	859 / 459	1.90
09/02/17	09/12/17	4.0y	MAIN SYSTEM FLOW	392 / 200	10.1	23.5	0.086	0.037	683 / 362	772 / 411	867 / 464	2.42
05/14/16	05/24/16	0.0y	MAIN SYSTEM FLOW	399 / 204	3.4	22.4	0.086	0.198	683 / 362	762 / 405	855 / 457	0.93
04/15/15	05/07/15	0.0y	MN FLOW/MN SYS PUMP	406 / 208	15.4	23.4	0.04	0.025	686 / 363	774 / 412	872 / 467	1.53
Baseline Data				435 / 224		32.7	0.03		693 / 367	790 / 421	887 / 475	2.5





Sample Date	Iron	Chromium	Nickel	Aluminum	Copper	Lead	Tin	Cadmium	Silver	Vanadium	Silicon	Sodium	Potassium	Titanium	Molybdenum	Antimony	Manganese	Lithium	Boron	Magnesium	Calcium	Barium	Phosphorus	Zinc
09/24/19	0	0	0	0	0	0	0	0	0	0	0	0	0	0	0	0	0	0	0	0	0	0	34	0
09/30/18	0	0	0	0	0	0	0	0	0	0	0	0	0	0	0	0	0	0	0	0	0	0	33	0
09/02/17	0	0	0	0	0	0	0	0	0	0	0	0	0	0	0	0	0	0	0	0	0	0	32	0
05/14/16	0	0	0	0	0	0	0	0	0	0	0	0	0	0	0	0	0	0	0	0	0	0	38	0
04/15/15	4	0	0	0	0	0	0	0	0	0	2	2	0	0	0	0	0	0	0	0	5	0	50	4
Baseline Data			0	0						0			0	0					0				270	

Elemental analysis results (above) in parts per million (ppm). [10,000 ppm = 1.0%]



Historical Comments

09/30/18	The results are consistent with previous history. Resample at next scheduled interval. (GCD) 90% Distillation Point is abnormally low.
09/02/17	The oil condition is consistent with previous samples. The viscosity remains low but the flash point is staying strong. No immediate action is required at this time but you can vent the low boilers out and replace the lost volume with fresh oil as preventative measure. Re-sample at next normal interval. (GCD) 90% Distillation Point is marginally low.
05/14/16	(GCD) 90% Distillation Point is marginally low. Pentane insolubles have increased but are still below the 0.5% condemning limit.
04/15/15	Viscosity of fluid at 23.4 cSt @ 40C and from previous used oil samples does not correspond to the viscosity of Calflo AF at 32.3 cSt. Sulfur levels of 2116 ppm are much higher than typical new oil values of less than 1 ppm. Investigate source of contaminants. Other properties look good.

Petro-Canada makes no representation or warranty of any kind, either express or implied, as to the accuracy or completeness of the analysis and assumes no responsibility and shall have no liability whatsoever with respect to such analysis, or a party's use of it. Petro-Canada is a division of HollyFrontier Corporation.