

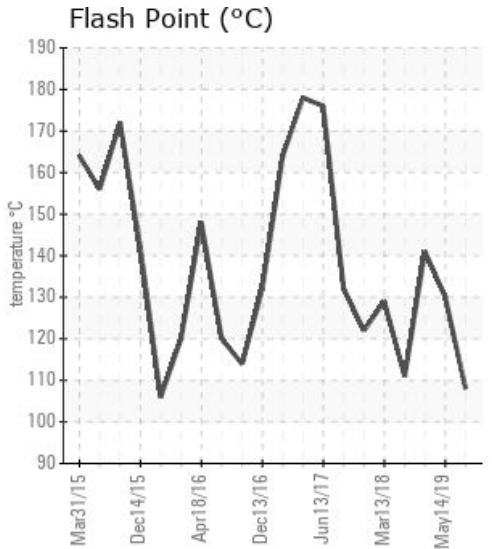
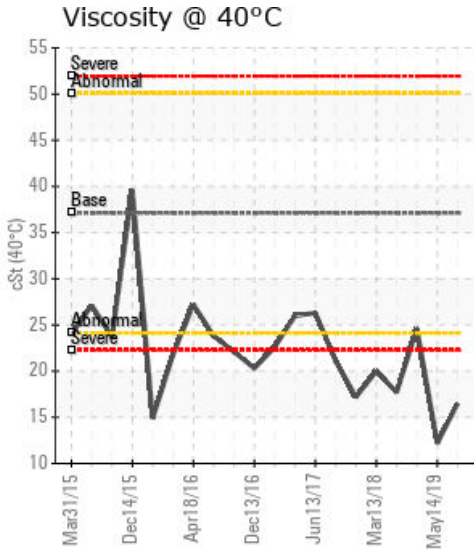
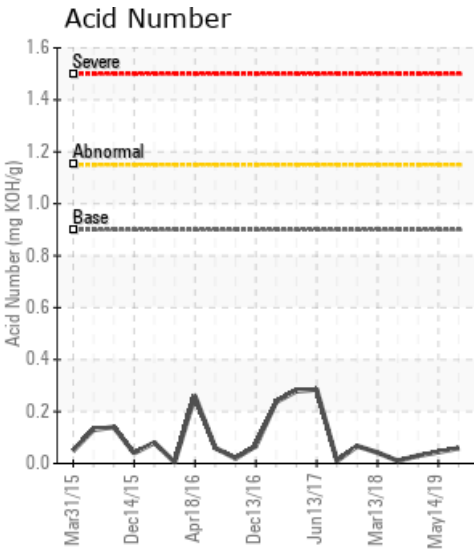
VTA HOT OIL PUMP

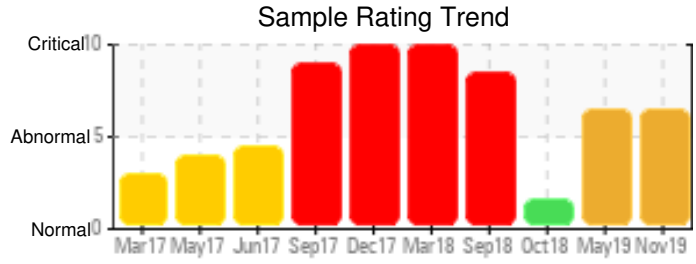
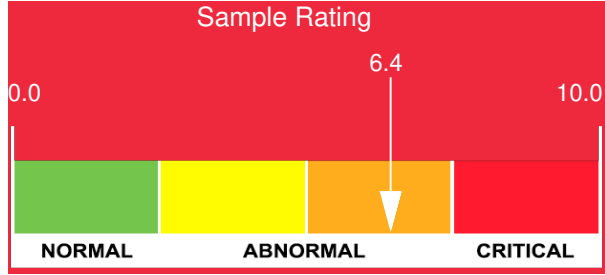
Customer: PTRHTF10004	System Information	Sample Information
ADM VITAMIN E PLANT 3700 EAST DIVISION STREET DECATUR, IL 62526 USA Attn: Rick Cluck Tel: (217)451-7770 E-Mail: ricky.cluck@adm.com	System Volume: 1800 gal Bulk Operating Temp: 650F / 343C Heating Source: Blanket: Fluid: PETRO CANADA PURITY FG HEAT TRANSFER FLUID Make: AMERICAN HEATING	Lab No: 02321734 Analyst: Joe Goecke Sample Date: 11/13/19 Received Date: 11/21/19 Completed: 11/27/19 Joe Goecke Joe.goecke@petrocanadalsp.com

Recommendation: Viscosity is still low and flash point has decreased I suggest planning a change or partial change to get the system in better condition within the next 45 days.

Comments: (GCD) 10% Distillation Point is severely low. COC Flash Point is severely low. Visc @ 40°C is severely low. (GCD) % < 335°C is abnormally high.

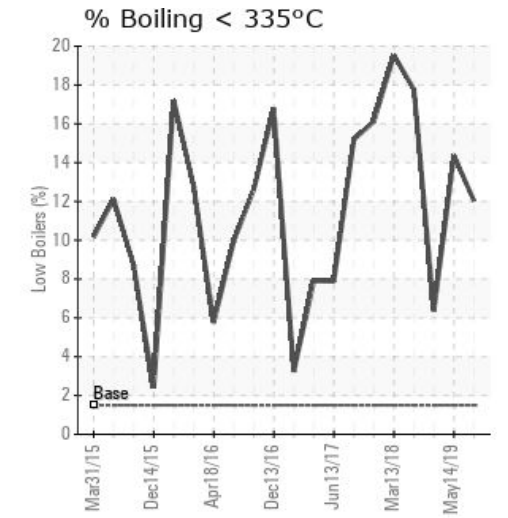
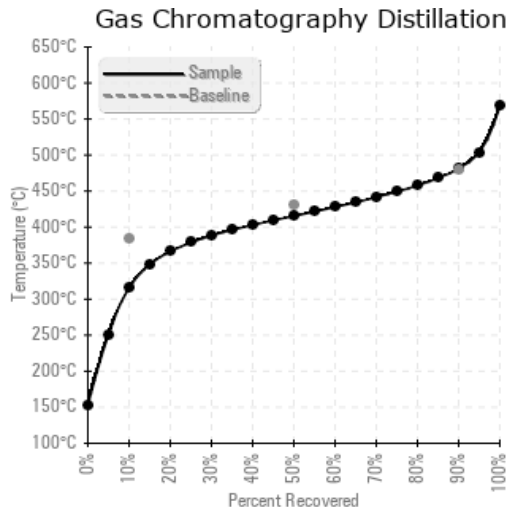
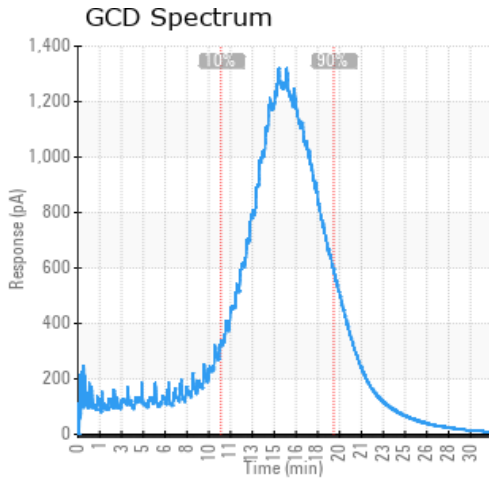
Sample Date	Received Date	Fluid Age	Sample Location	Flash Point (COC)	Water (KF)	Viscosity (40°C)	Acid Number	Solids	GCD 10%	GCD 50%	GCD 90%	GCD % < 335°C
	mm/dd/yy			°F/°C	ppm	cSt	mg/KOH/g	%wt	°F/°C	°F/°C	°F/°C	%
11/13/19	11/21/19	0y	B4 HOT OIL PUMP	226 / 108	4.0	16.5	0.059	0.046	600 / 315	780 / 415	898 / 481	12.03
05/14/19	05/22/19	0y	B3	266 / 130	9.5	12.2	0.044	0.050	567 / 297	783 / 417	904 / 485	14.36
10/11/18	10/18/18	0y		286 / 141	10.0	24.6	0.03	0.036	677 / 358	802 / 428	908 / 487	6.37
09/20/18	09/27/18	2y		232 / 111	8.6	17.7	0.01	0.021	503 / 262	775 / 413	882 / 472	17.77
03/13/18	03/21/18	0y		264 / 129	6.2	20.0	0.042	0.049	535 / 280	761 / 405	880 / 471	19.53
Baseline Data				459 / 237		37.12	0.90		721 / 383	807 / 431	892 / 478	1.5





Sample Date	Iron	Chromium	Nickel	Aluminum	Copper	Lead	Tin	Cadmium	Silver	Vanadium	Silicon	Sodium	Potassium	Titanium	Molybdenum	Antimony	Manganese	Lithium	Boron	Magnesium	Calcium	Barium	Phosphorus	Zinc
11/13/19	1	0	0	0	0	0	0	0	0	0	0	0	0	0	0	0	0	0	0	0	0	0	43	0
05/14/19	1	0	0	0	0	0	0	0	0	0	0	0	0	0	0	0	0	0	0	0	0	0	48	0
10/11/18	0	0	0	0	0	0	0	0	0	0	0	0	0	0	0	0	0	0	0	0	0	0	22	0
09/20/18	1	0	0	0	0	0	4	0	0	0	0	0	0	0	0	0	0	0	0	0	0	0	56	0
03/13/18	0	0	0	0	0	0	0	0	0	0	0	0	0	0	0	0	0	0	0	0	0	0	63	0
Baseline Data			0	0						0			0	0					0				230	

Elemental analysis results (above) in parts per million (ppm). [10,000 ppm = 1.0%]



Historical Comments	
05/14/19	This system is extremely low on viscosity at 12.2 cSt. Flash point is over 100 degrees C less than a fresh charge and the low boilers are over 14%. I recommend planning a change of this oil soon since venting is currently not an option. Heat transfer ability and safety are main concerns. (GCD) 10% Distillation Point is severely low. COC Flash Point is severely low. Visc @ 40°C is severely low. (GCD) % < 335°C is abnormally high.
10/11/18	System much better. Flash point still a little low, but 30 Degrees C higher than before. GCD points all looking better. Continue to use and resample in 60 days. COC Flash Point is severely low.
09/20/18	Viscosity is half of new oil, Flash point is extremely low, low boilers are very high at 17.8% 10% distillation point also very low at 261.8C. This heat transfer efficacy of this oil is going to suffer. Oil needs to be changed ASAP to improve safety of operation. (GCD) % < 335°C is severely high. (GCD) 10% Distillation Point is severely low. COC Flash Point is severely low. Visc @ 40°C is severely low.
03/13/18	System continues to be dangerously low on flash point and getting higher with low boilers or light ends creating a concern. System should be changed ASAP. Viscosity also critically low. (GCD) % < 335°C is severely high. (GCD) 10% Distillation Point is severely low. COC Flash Point is severely low. Visc @ 40°C is severely low.

Petro-Canada makes no representation or warranty of any kind, either express or implied, as to the accuracy or completeness of the analysis and assumes no responsibility and shall have no liability whatsoever with respect to such analysis, or a party's use of it. Petro-Canada is a division of HollyFrontier Corporation.