

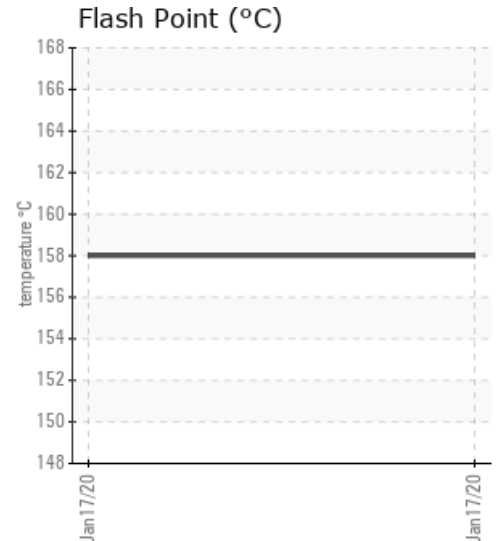
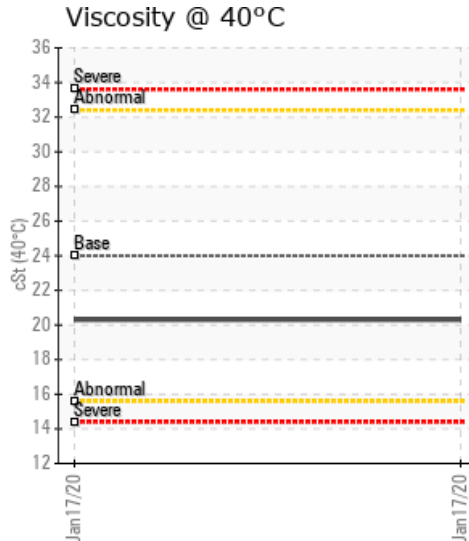
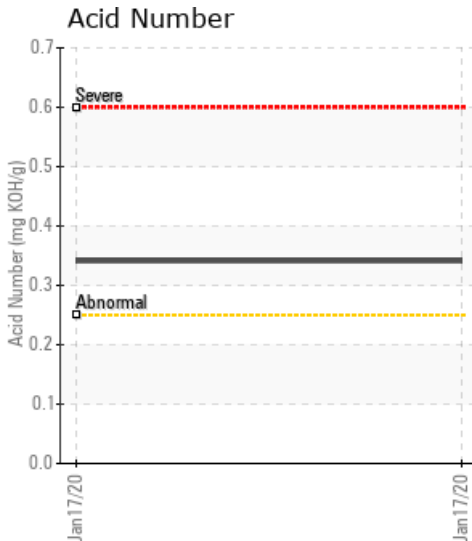
## HOTPRESS

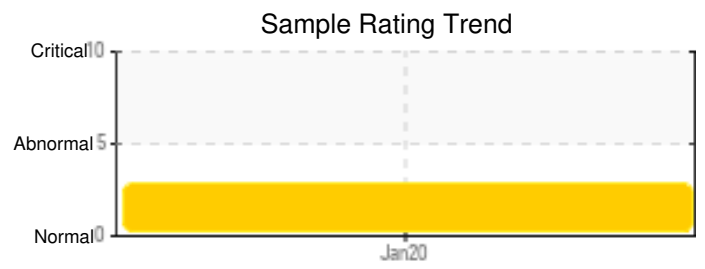
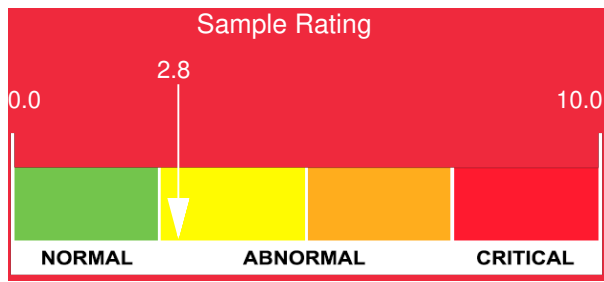
Customer: PTRHTF10170	System Information	Sample Information
TYREE OIL CO. INC. 2429 N. BORTHWICK AVE PORTLAND, OR 97227 USA Attn: Tom Taft Tel: (503)991-8708 E-Mail: tom@tyreeoil.com	System Volume: 0 gal Bulk Operating Temp: Not Specified Heating Source: Blanket: Fluid: CHEVRON HEAT TRANSFER OIL 22 Make:	Lab No: 02341649 Analyst: Bill Quesnel CLS,OMA II,MLA-III,LLA-I Sample Date: 01/17/20 Received Date: 03/05/20 Completed: 03/13/20 Bill Quesnel CLS,OMA II,MLA-III,LLA-I

Recommendation: The low flash point indicates that the system may need to be vented to remove light ends. Acid Number is above the limit for this product, however, suggest resampling in 6 months to recheck.

Comments: Acid Number (AN) is abnormally high. COC Flash Point is abnormally low. (GCD) 90% Distillation Point is marginally high.

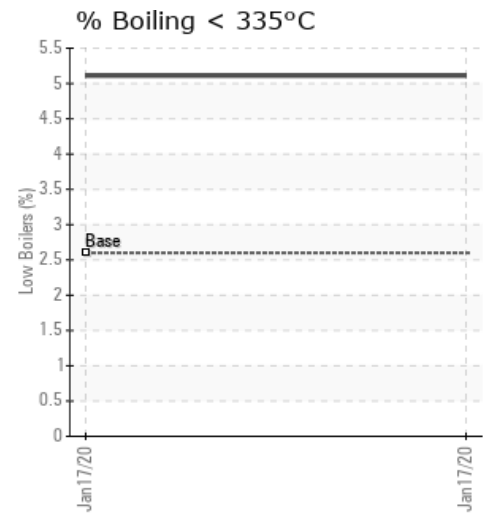
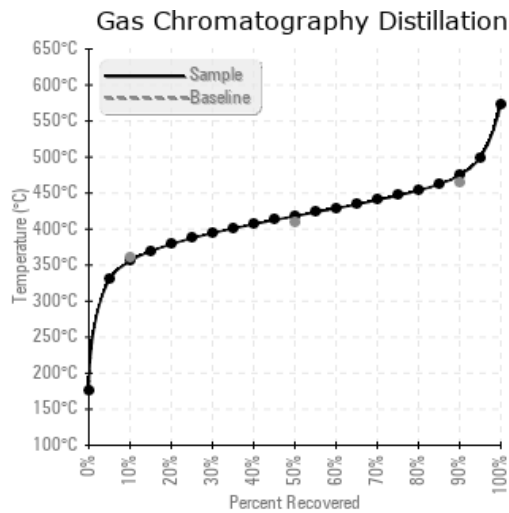
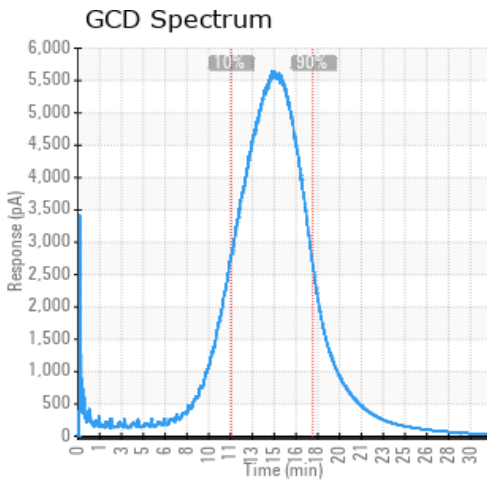
Sample Date	Received Date	Fluid Age	Sample Location	Flash Point (COC)	Water (KF)	Viscosity (40°C)	Acid Number	Solids	GCD 10%	GCD 50%	GCD 90%	GCD % < 335°C
	mm/dd/yy			°F/°C	ppm	cSt	mg/KOH/g	%wt	°F/°C	°F/°C	°F/°C	%
01/17/20	03/05/20	0h		316 / 158	5.6	20.3	0.341	0.100	672 / 356	784 / 418	887 / 475	5.11
Baseline Data				408 / 209		24			680 / 360	768 / 409	867 / 464	2.6





Sample Date	Iron	Chromium	Nickel	Aluminum	Copper	Lead	Tin	Cadmium	Silver	Vanadium	Silicon	Sodium	Potassium	Titanium	Molybdenum	Antimony	Manganese	Lithium	Boron	Magnesium	Calcium	Barium	Phosphorus	Zinc
01/17/20	2	0	0	0	0	0	0	0	0	0	0	0	0	0	0	0	0	0	0	0	0	0	0	0
Baseline Data			0	0						0			0	0					0				0	

Elemental analysis results (above) in parts per million (ppm). [10,000 ppm = 1.0%]



### Historical Comments
