

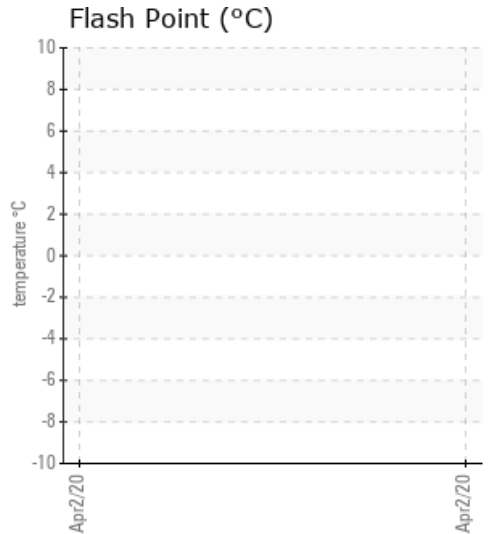
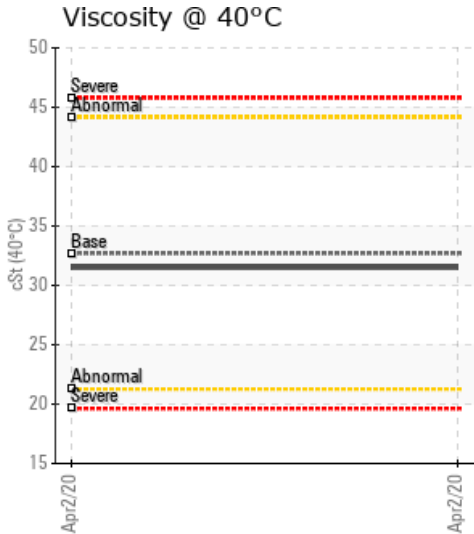
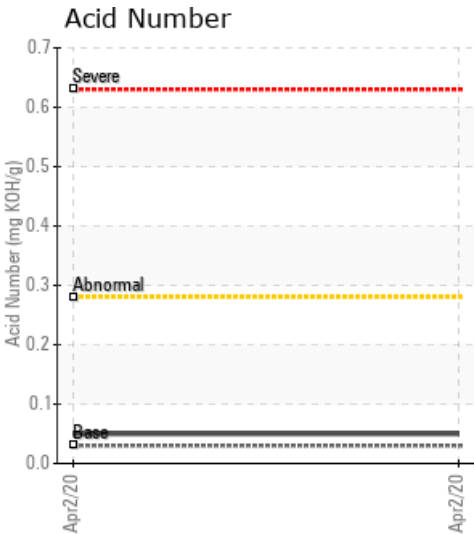
21048

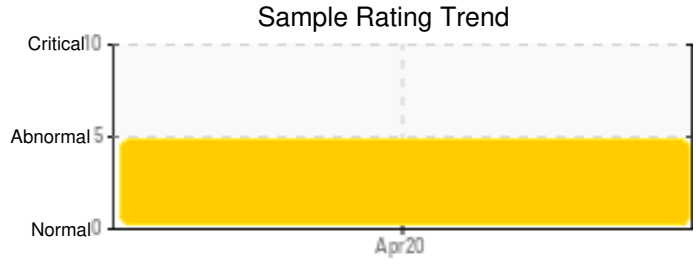
Customer: PTRHTF10231	System Information	Sample Information
NOVOMER INC 275 BUELL RD ROCHESTER, NY 14624 USA Attn: Rusty Lewis Tel: E-Mail:	System Volume: 0 ltr Bulk Operating Temp: 374F / 190C Heating Source: Blanket: Fluid: PETRO CANADA CALFLO AF Make:	Lab No: 02347355 Analyst: Doug Vrooman Sample Date: 04/02/20 Received Date: 04/03/20 Completed: 04/08/20 Doug Vrooman douglas.vrooman@petrocanadalsp.com

Recommendation: Based on the amount of water content and the fact that this is not a large system, we would recommend a fluid drain and fill.

Comments: Water contamination levels are severely high. Water contamination levels are severely high.. ppm Water contamination levels are severely high.

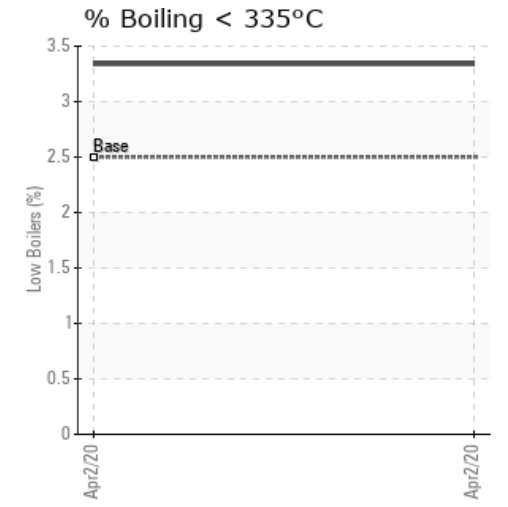
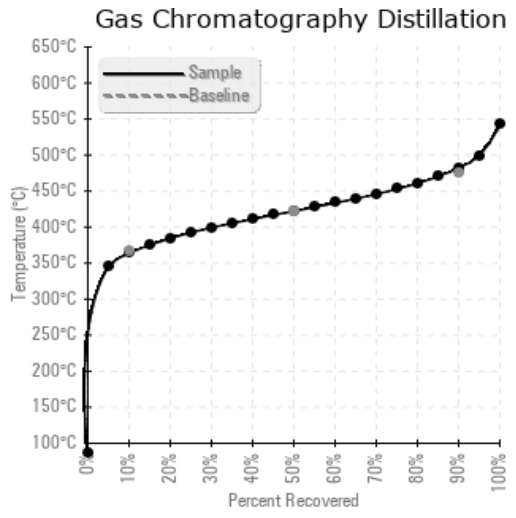
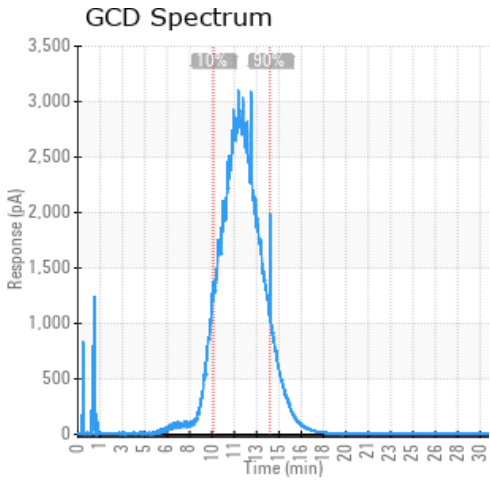
Sample Date	Received Date	Fluid Age	Sample Location	Flash Point (COC)	Water (KF)	Viscosity (40°C)	Acid Number	Solids	GCD 10%	GCD 50%	GCD 90%	GCD % < 335°C
	mm/dd/yy			°F/°C	ppm	cSt	mg/KOH/g	%wt	°F/°C	°F/°C	°F/°C	%
04/02/20	04/03/20	0m			2557.7	31.5	0.05		686 / 364	792 / 422	900 / 482	3.34
Baseline Data				435 / 224		32.7	0.03		693 / 367	790 / 421	887 / 475	2.5





Sample Date	Iron	Chromium	Nickel	Aluminum	Copper	Lead	Tin	Cadmium	Silver	Vanadium	Silicon	Sodium	Potassium	Titanium	Molybdenum	Antimony	Manganese	Lithium	Boron	Magnesium	Calcium	Barium	Phosphorus	Zinc
04/02/20	16	0	0	0	2	0	0	0	0	0	8	0	1	0	0	0	0	0	0	0	2	0	282	3
Baseline Data			0	0						0			0	0					0				270	

Elemental analysis results (above) in parts per million (ppm). [10,000 ppm = 1.0%]



Historical Comments

Petro-Canada makes no representation or warranty of any kind, either express or implied, as to the accuracy or completeness of the analysis and assumes no responsibility and shall have no liability whatsoever with respect to such analysis, or a party's use of it. Petro-Canada is a division of HollyFrontier Corporation.