

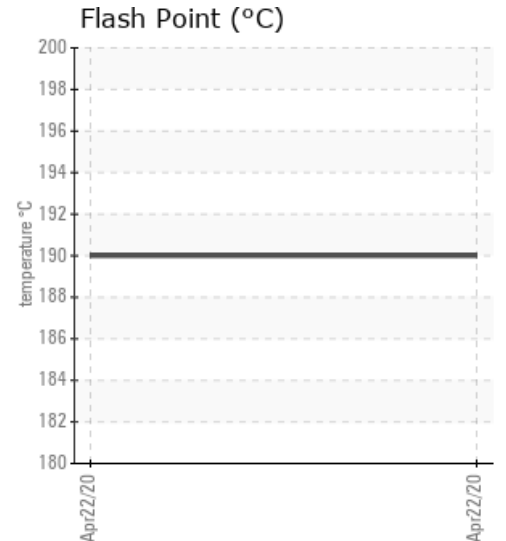
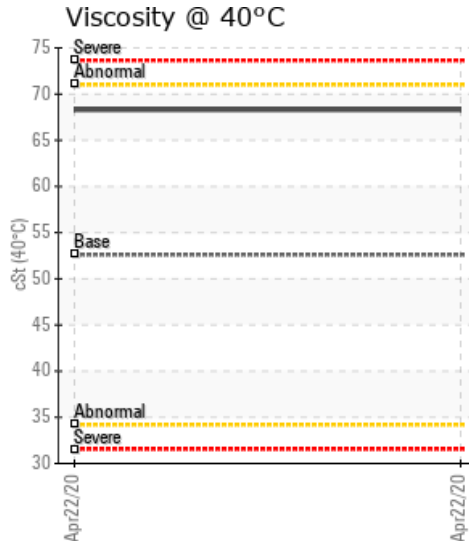
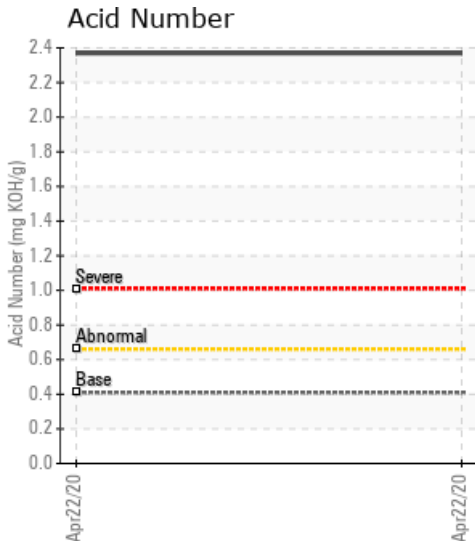
04960495

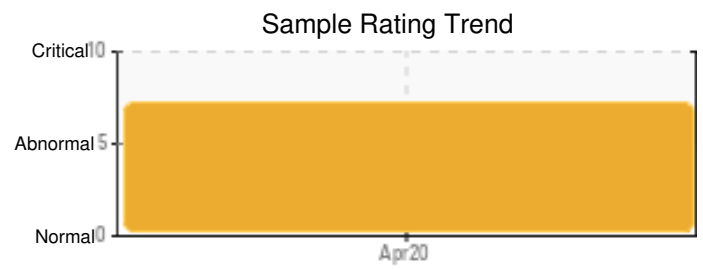
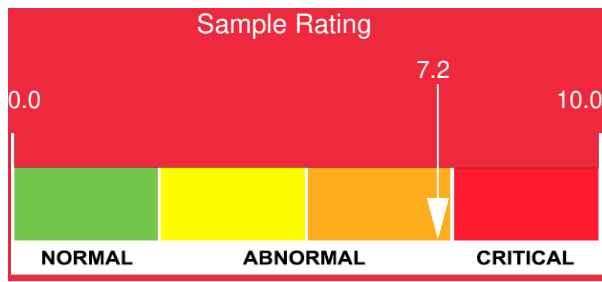
Customer:	System Information	Sample Information
WEARCHECK USA 501 Madison Ave Cary, NC 27513 USA Attn: CATHERINE ANASTASIO Tel: E-Mail: CANASTASIO@WEARCHECKUSA.CO	System Volume: 0 gal Bulk Operating Temp: Not Specified Heating Source: Blanket: Fluid: HEAT TRANSFER FLUID ISO 68 Make:	Lab No: 02350195 Analyst: Bill Quesnel CLS,OMA II,MLA-III,LLA-I Sample Date: 04/22/20 Received Date: 04/23/20 Completed: 04/24/20 Bill Quesnel CLS,OMA II,MLA-III,LLA-I

Recommendation: Recommend vent tank to reduce light ends. This product is at the end of it's life, recommend schedule a fluid changeout.

Comments: Acid Number (AN) is severely high. (GCD) 90% Distillation Point is severely high. Calcium ppm levels are abnormally high. COC Flash Point is marginally low. (GCD) 10% Distillation Point is marginally low.

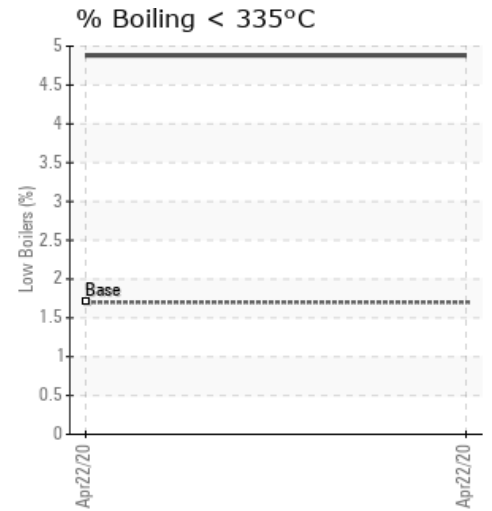
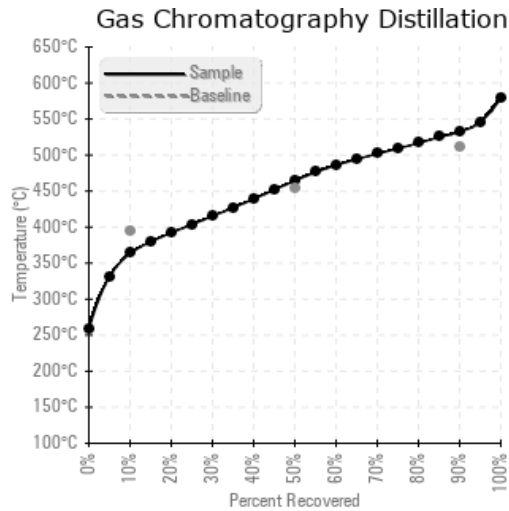
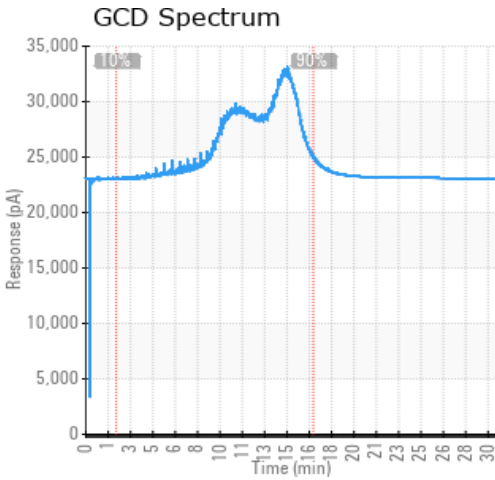
Sample Date	Received Date	Fluid Age	Sample Location	Flash Point (COC)	Water (KF)	Viscosity (40°C)	Acid Number	Solids	GCD 10%	GCD 50%	GCD 90%	GCD % < 335°C
	mm/dd/yy			°F/°C	ppm	cSt	mg/KOH/g	%wt	°F/°C	°F/°C	°F/°C	%
04/22/20	04/23/20	0h		374 / 190	204.7	68.3	2.37	0.257	686 / 364	868 / 464	990 / 532	4.88
Baseline Data				437 / 225		52.6	0.41		741 / 394	849 / 454	952 / 511	1.7





Sample Date	Iron	Chromium	Nickel	Aluminum	Copper	Lead	Tin	Cadmium	Silver	Vanadium	Silicon	Sodium	Potassium	Titanium	Molybdenum	Antimony	Manganese	Lithium	Boron	Magnesium	Calcium	Barium	Phosphorus	Zinc
04/22/20	2	0	0	0	0	0	0	0	0	0	0	10	1	0	0	0	0	0	0	0	26	0	24	4
Baseline Data			0	0						0			0	0					5				250	

Elemental analysis results (above) in parts per million (ppm). [10,000 ppm = 1.0%]



Historical Comments

WearCheck Canada makes no representation or warranty of any kind, either express or implied, as to the accuracy or completeness of the analysis and assumes no responsibility and shall have no liability whatsoever with respect to such analysis, or a party's use of it.