

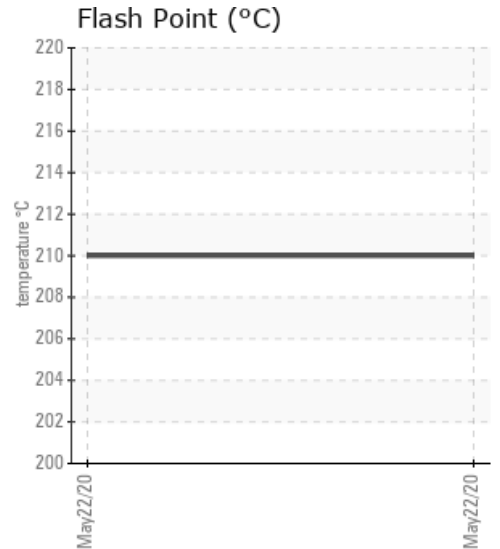
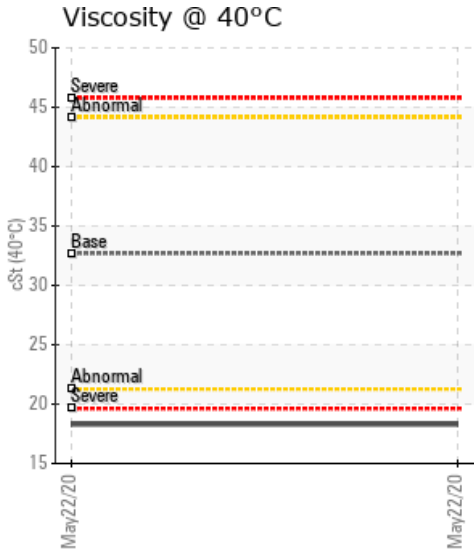
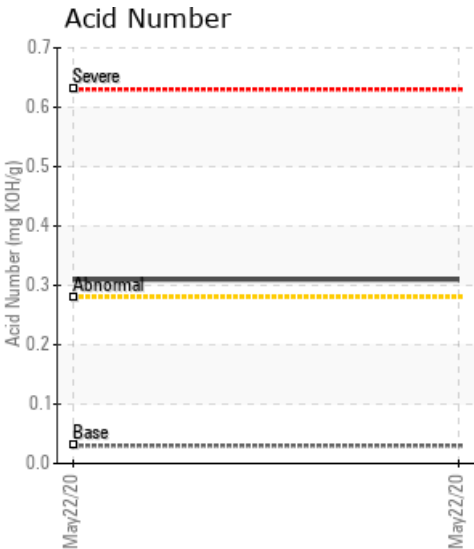
RFO3 HOT OIL BOILER #2

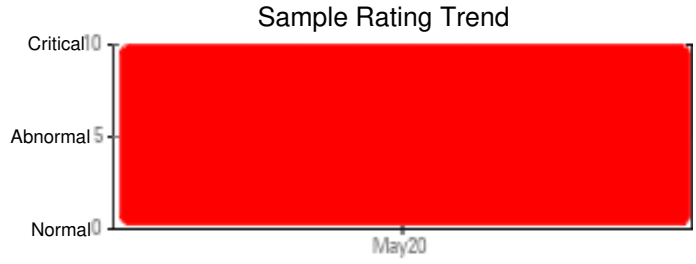
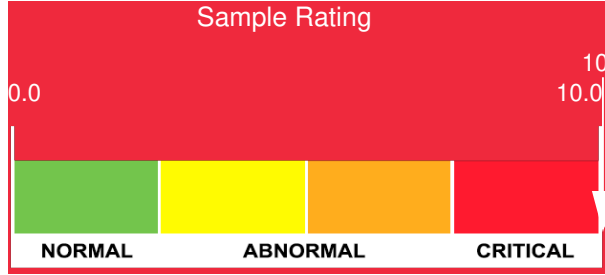
Customer: PTRHTF10057	System Information	Sample Information
PROPEX RINGGOLD PLANT 428 ROLLINS INDUSTRIAL BLVD RINGGOLD, GA 30736 USA Attn: STEWART DOMAINGUE Tel: (423)553-3843 E-Mail: stewart.domaingue@propexglobal.com	System Volume: 30 gal Bulk Operating Temp: 400F / 204C Heating Source: Blanket: Fluid: PETRO CANADA CALFLO AF Make:	Lab No: 02358526 Analyst: Jake Finn Sample Date: 05/22/20 Received Date: 06/09/20 Completed: 06/23/20 Jake Finn jake.finn@petrocanadalsp.com

Recommendation: This fluid is in severe condition and is not suitable for continued use. It is recommended that the system is drained and re-filled with premium, virgin Petro-Canada Calflo AF.

Comments: Copper and iron ppm levels are severe. Water contamination levels are severely high. (GCD) 10% Distillation Point is severely high. Visc @ 40°C is severely low. Acid Number (AN) is abnormally high.

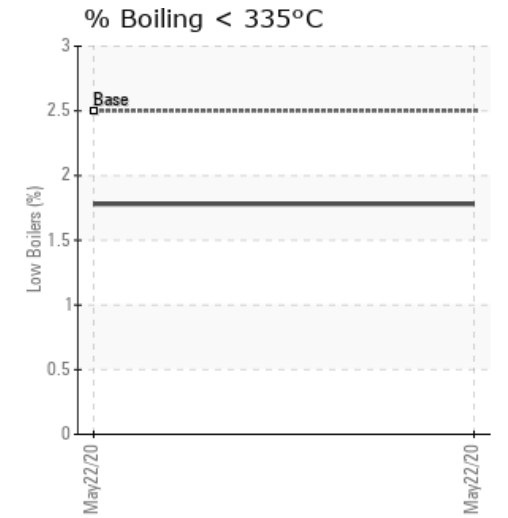
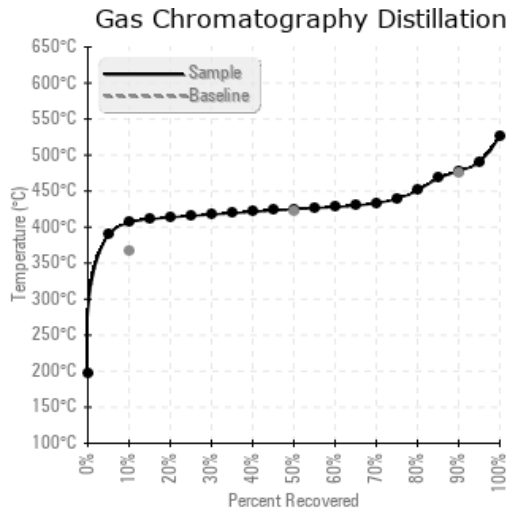
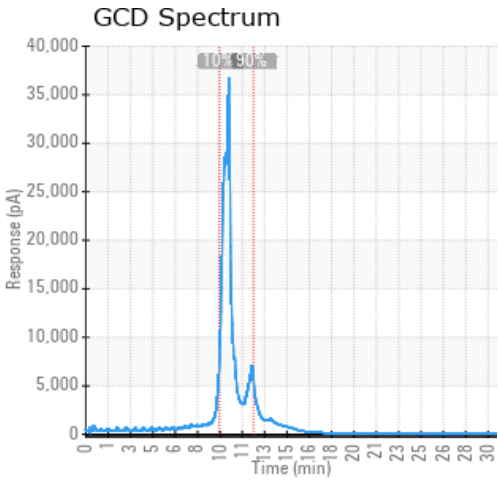
Sample Date	Received Date	Fluid Age	Sample Location	Flash Point (COC)	Water (KF)	Viscosity (40°C)	Acid Number	Solids	GCD 10%	GCD 50%	GCD 90%	GCD % < 335°C
	mm/dd/yy			°F/°C	ppm	cSt	mg/KOH/g	%wt	°F/°C	°F/°C	°F/°C	%
05/22/20	06/09/20	0h		410 / 210	2139.4	18.3	0.31	0.373	764 / 407	797 / 425	892 / 478	1.78
Baseline Data				435 / 224		32.7	0.03		693 / 367	790 / 421	887 / 475	2.5





Sample Date	Iron	Chromium	Nickel	Aluminum	Copper	Lead	Tin	Cadmium	Silver	Vanadium	Silicon	Sodium	Potassium	Titanium	Molybdenum	Antimony	Manganese	Lithium	Boron	Magnesium	Calcium	Barium	Phosphorus	Zinc	
05/22/20	733	4	0	4	125	5	12	0	0	0	12	0	2	0	0	6	7	1	2	2	2	0	13	22	
Baseline Data			0	0						0			0	0					0					270	

Elemental analysis results (above) in parts per million (ppm). [10,000 ppm = 1.0%]



Historical Comments

Petro-Canada makes no representation or warranty of any kind, either express or implied, as to the accuracy or completeness of the analysis and assumes no responsibility and shall have no liability whatsoever with respect to such analysis, or a party's use of it. Petro-Canada is a division of HollyFrontier Corporation.