

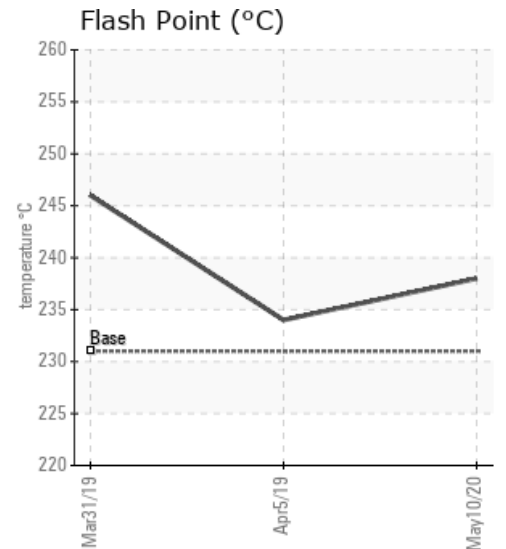
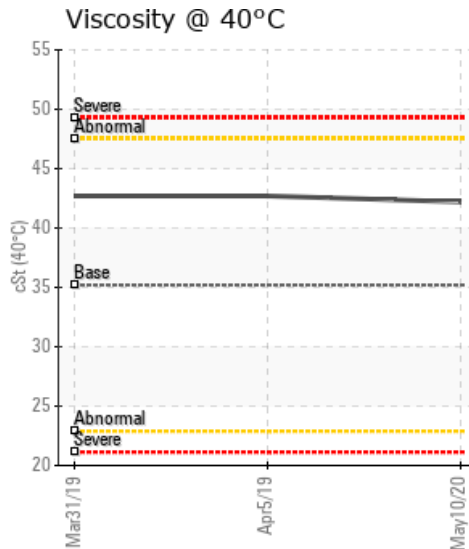
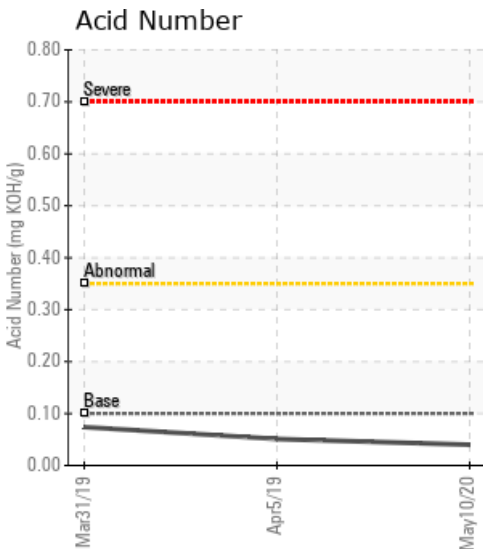
[16-17-64-26W3M] 16-17 SIMONETTE

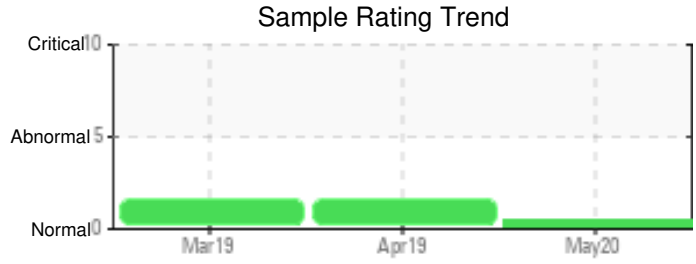
Customer: PTRHTF20211	System Information	Sample Information
Paramount Resources Inc. Simonette, AB Canada Attn: Ryan Holtet Tel: (780)622-7078 E-Mail: ryan.holtet@paramountres.com	System Volume: 6000 ltr Bulk Operating Temp: Not Specified Heating Source: Blanket: Fluid: PETRO CANADA CALFLO HTF Make:	Lab No: 02359296 Analyst: Peter Harteveld Sample Date: 05/10/20 Received Date: 06/12/20 Completed: 06/22/20 Peter Harteveld peter.harteveld@hollyfrontier.com

Recommendation: The fluid is in a good condition and suitable for further use. Viscosity is slightly high. This combined with elevated distillation temperatures indicates that the fill contains a heavier fluid, possibly Sunoil 21. This is not a problem. Please re-sample in 12 months.

Comments: (GCD) 10% Distillation Point is abnormally high. (GCD) 50% Distillation Point is marginally high.

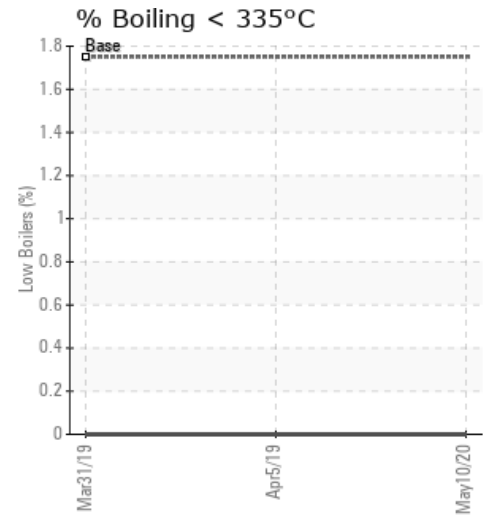
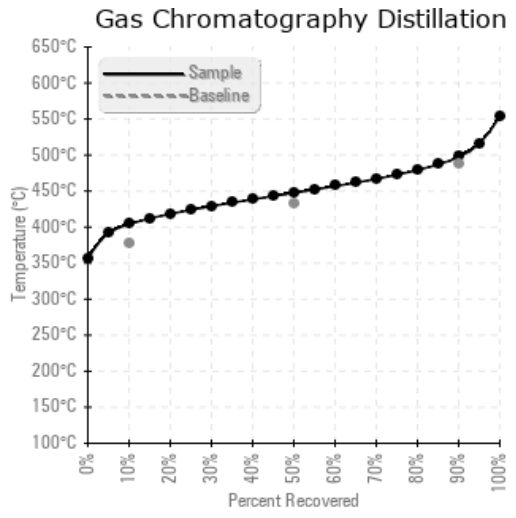
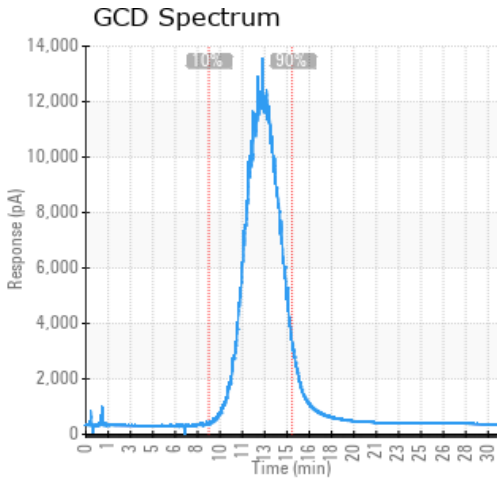
Sample Date	Received Date	Fluid Age	Sample Location	Flash Point (COC)	Water (KF)	Viscosity (40°C)	Acid Number	Solids	GCD 10%	GCD 50%	GCD 90%	GCD % < 335°C
	mm/dd/yy			°F/°C	ppm	cSt	mg/KOH/g	%wt	°F/°C	°F/°C	°F/°C	%
05/10/20	06/12/20	5.0h	PUMP SUCTION	460 / 238	0.00	42.2	0.04	0.064	759 / 404	838 / 448	927 / 497	0.00
04/05/19	04/12/19	800.0h	PUMP DISCHARGE	453 / 234	101.6	42.7	0.051	0.070	757 / 403	839 / 449	936 / 502	0.00
03/31/19	04/12/19	0.0h	PUMP DISCHARGE	475 / 246	70.6	42.7	0.074	0.069	760 / 404	839 / 449	933 / 501	0.00
Baseline Data				448 / 231		35.20	.1		712 / 378	810 / 432	910 / 488	1.75





Sample Date	Iron	Chromium	Nickel	Aluminum	Copper	Lead	Tin	Cadmium	Silver	Vanadium	Silicon	Sodium	Potassium	Titanium	Molybdenum	Antimony	Manganese	Lithium	Boron	Magnesium	Calcium	Barium	Phosphorus	Zinc
05/10/20	2	0	0	0	0	0	0	0	0	0	0	1	0	0	0	0	0	0	0	0	2	0	49	0
04/05/19	4	0	0	0	0	0	0	0	0	0	0	5	2	0	0	0	0	0	0	1	5	0	54	0
03/31/19	2	0	0	0	0	0	0	0	0	0	0	8	3	0	0	0	0	0	0	2	6	0	62	0
Baseline Data			0	0						0			0	0				0	0				280	

Elemental analysis results (above) in parts per million (ppm). [10,000 ppm = 1.0%]



Historical Comments	
04/05/19	The fluid is in good condition and suitable for further use. Viscosity is high. This in combination with elevated distillation temperatures indicates that the system fill is a mix of Calflo HTF with a heavier fluid. (GCD) 90% Distillation Point is abnormally high. (GCD) 10% Distillation Point is marginally high.
03/31/19	The fluid is in a good condition and suitable for further use. High viscosity, Flash Point in combination with elevated distillation temperatures indicates that the system fill consists of a mix of Calflo HTF and a heavier fluid. (GCD) 90% Distillation Point is abnormally high. (GCD) 10% Distillation Point is marginally high.

Petro-Canada makes no representation or warranty of any kind, either express or implied, as to the accuracy or completeness of the analysis and assumes no responsibility and shall have no liability whatsoever with respect to such analysis, or a party's use of it. Petro-Canada is a division of HollyFrontier Corporation.