

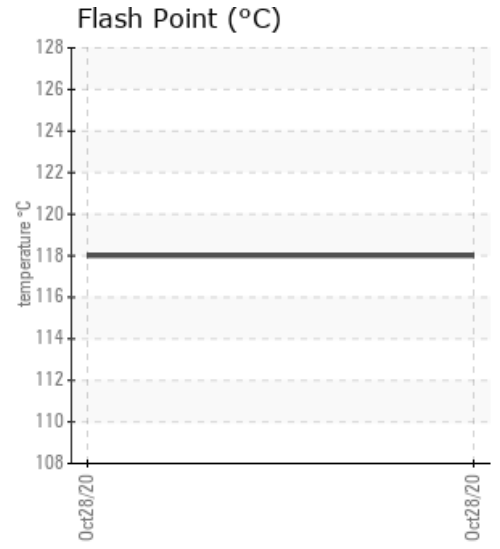
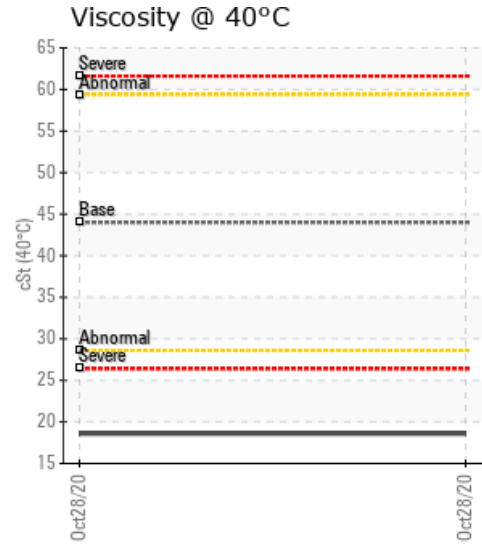
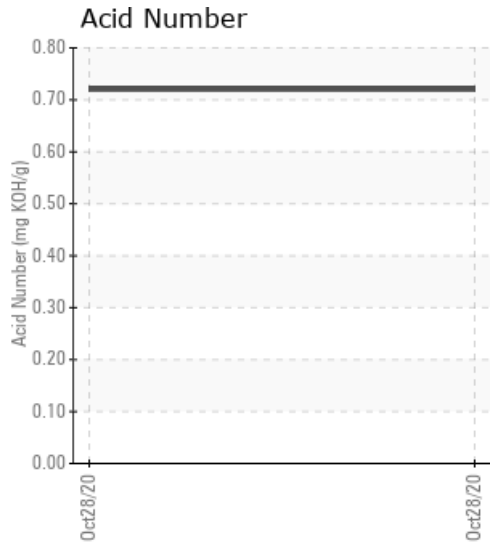
[WENATCHEE PIT] HEAT TRANSFER SYSTEM

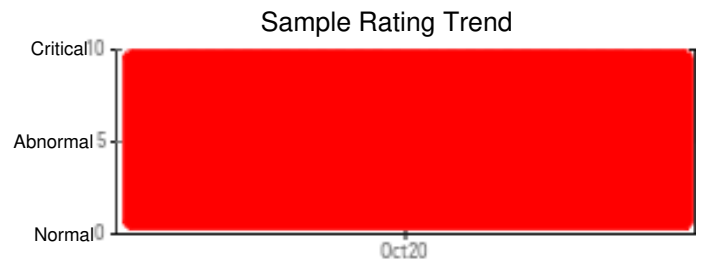
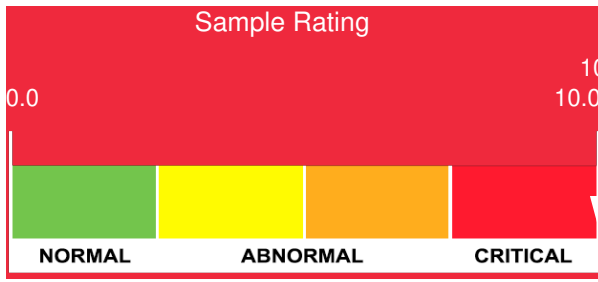
| Customer: PTRHTF10239 | System Information | Sample Information |
|--|---|---|
| Central Washington Asphalt 53847 Walla Walla River Rd Milton-Freewater, OR 97862 USA Attn: Ron Jones Tel: (541)938-5205 E-Mail: ron@cwainc.us | System Volume: 220 gal Bulk Operating Temp: Not Specified Heating Source: Blanket: Fluid: VALVOLINE R&O HYDRAULIC OIL 46 Make: | Lab No: 02388209 Analyst: Ron LeBlanc Sample Date: 10/28/20 Received Date: 11/19/20 Completed: 12/07/20 Ron LeBlanc Ronald.LeBlancSr@petrocanadalsp.com |

Recommendation: Emulsified water in system. Viscosity is severely low for reported product. Flash point is extremely low. Suggest clean and flush system to gain proper operating levels.

Comments: Water contamination levels are severely high. Water contamination levels are severely high.. ppm Water contamination levels are severely high. (GCD) % < 335°C is severely high. (GCD) 10% Distillation Point is severely low. COC Flash Point is severely low. Visc @ 40°C is severely low.

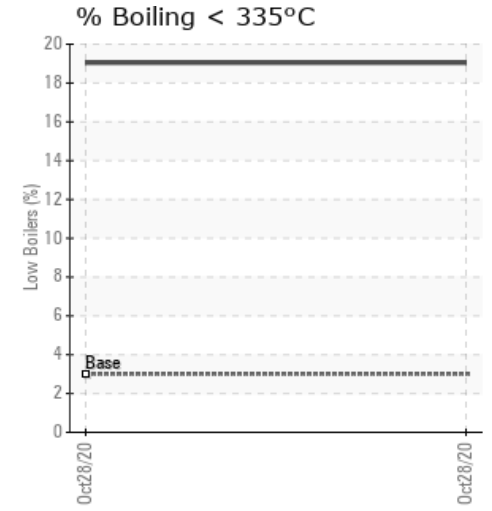
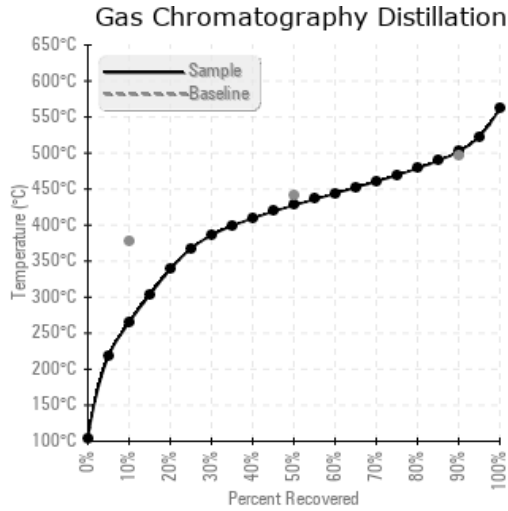
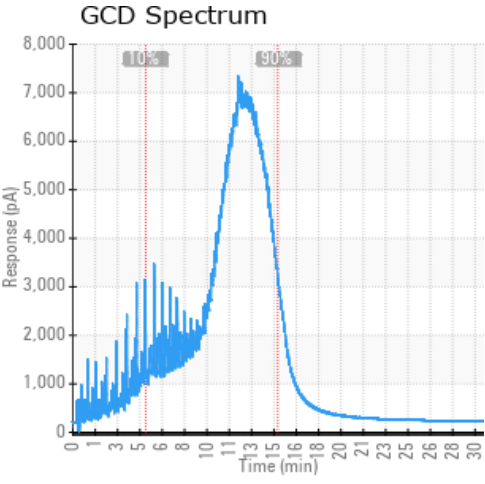
| Sample Date | Received Date | Fluid Age | Sample Location | Flash Point (COC) | Water (KF) | Viscosity (40°C) | Acid Number | Solids | GCD 10% | GCD 50% | GCD 90% | GCD % < 335°C |
|---------------|---------------|-----------|-----------------|-------------------|------------|------------------|-------------|--------|-----------|-----------|-----------|---------------|
| | mm/dd/yy | | | °F/°C | ppm | cSt | mg/KOH/g | %wt | °F/°C | °F/°C | °F/°C | % |
| 10/28/20 | 11/19/20 | 10y | EXPANTION TANK | 244 / 118 | 11676.8 | 18.6 | 0.72 | 0.195 | 508 / 264 | 802 / 428 | 936 / 502 | 19.04 |
| Baseline Data | | | | 410 / 210 | | 44 | | | 711 / 377 | 824 / 440 | 927 / 497 | 3 |





| Sample Date | Iron | Chromium | Nickel | Aluminum | Copper | Lead | Tin | Cadmium | Silver | Vanadium | Silicon | Sodium | Potassium | Titanium | Molybdenum | Antimony | Manganese | Lithium | Boron | Magnesium | Calcium | Barium | Phosphorus | Zinc |
|---------------|------|----------|--------|----------|--------|------|-----|---------|--------|----------|---------|--------|-----------|----------|------------|----------|-----------|---------|-------|-----------|---------|--------|------------|------|
| 10/28/20 | 1 | 0 | 0 | 0 | 1 | 0 | 0 | 0 | 0 | 0 | 0 | 0 | 0 | 0 | 0 | 0 | 0 | 0 | 0 | 0 | 1 | 0 | 0 | 2 |
| Baseline Data | | | 0 | 0 | | | | | | 0 | | | 0 | 0 | | | | 0 | 0 | | | | 0 | |

Elemental analysis results (above) in parts per million (ppm). [10,000 ppm = 1.0%]



Historical Comments

| |
|--|
| |
| |
| |
| |
| |

Petro-Canada makes no representation or warranty of any kind, either express or implied, as to the accuracy or completeness of the analysis and assumes no responsibility and shall have no liability whatsoever with respect to such analysis, or a party's use of it. Petro-Canada is a division of HollyFrontier Corporation.