

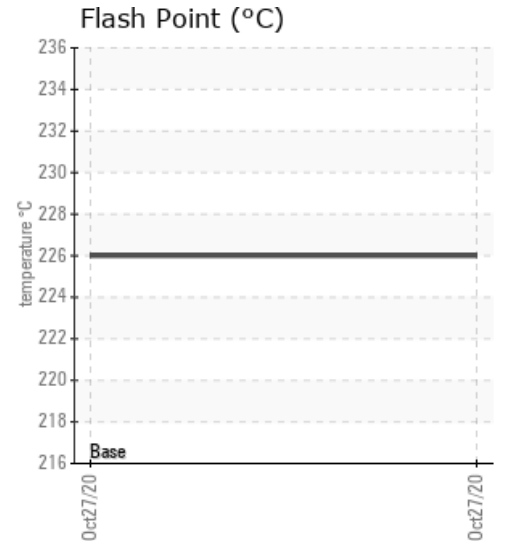
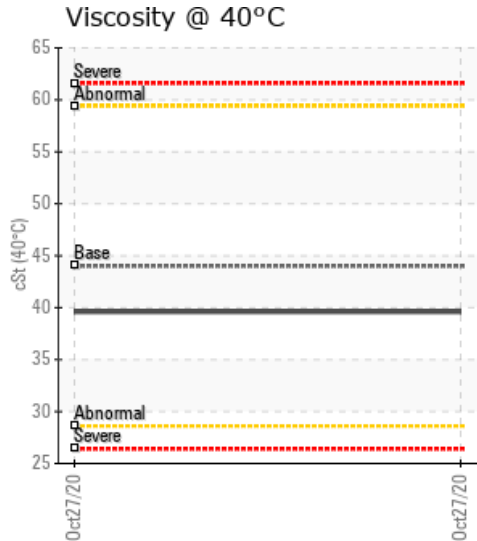
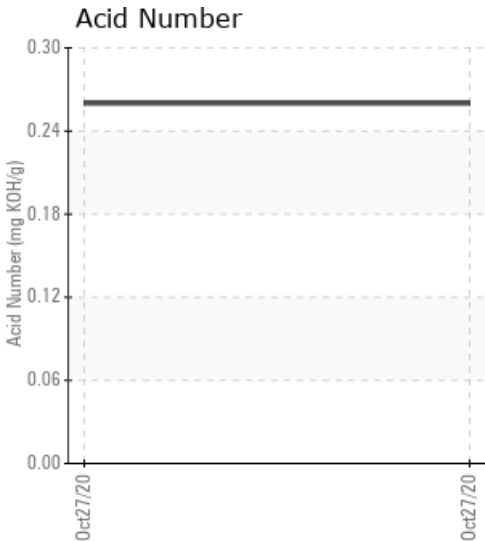
[BENTON CITY PLANT] HEAT TRANSFER SYSTEM

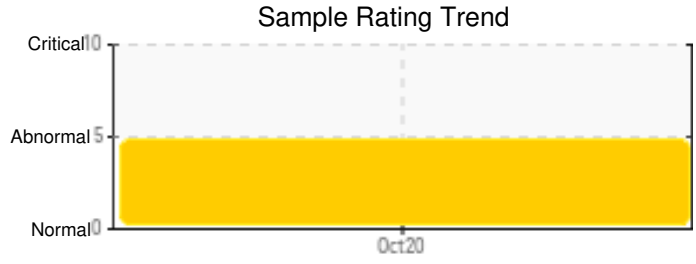
Customer: PTRHTF10239	System Information	Sample Information
Central Washington Asphalt 53847 Walla Walla River Rd Milton-Freewater, OR 97862 USA Attn: Ron Jones Tel: (541)938-5205 E-Mail: ron@cwainc.us	System Volume: 220 gal Bulk Operating Temp: Not Specified Heating Source: Blanket: Fluid: VALVOLINE R&O HYDRAULIC OIL 46 Make:	Lab No: 02388210 Analyst: Ron LeBlanc Sample Date: 10/27/20 Received Date: 11/19/20 Completed: 12/07/20 Ron LeBlanc Ronald.LeBlancSr@petrocanadalsp.com

Recommendation: Water in the system. Drain free water. Resample after water has been drained.

Comments: Water contamination levels are abnormally high. Water contamination levels are abnormally high.. ppm Water contamination levels are abnormally high.

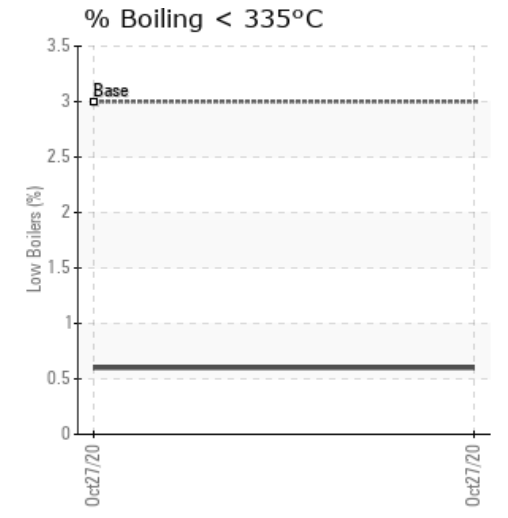
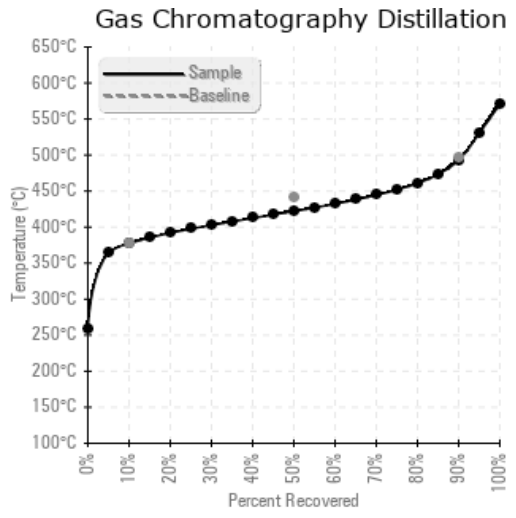
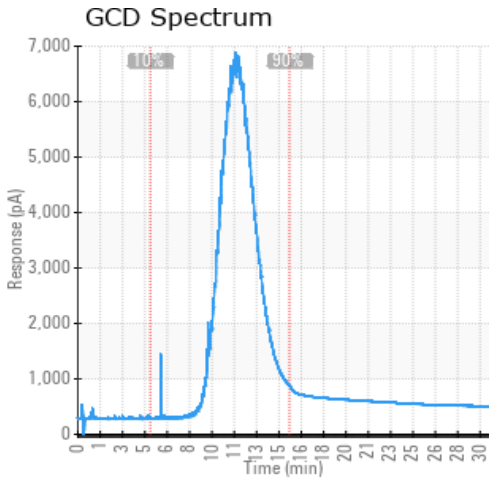
Sample Date	Received Date	Fluid Age	Sample Location	Flash Point (COC)	Water (KF)	Viscosity (40°C)	Acid Number	Solids	GCD 10%	GCD 50%	GCD 90%	GCD % < 335°C
	mm/dd/yy			°F/°C	ppm	cSt	mg/KOH/g	%wt	°F/°C	°F/°C	°F/°C	%
10/27/20	11/19/20	5y	PORT	439 / 226	648.5	39.6	0.26	0.055	711 / 377	792 / 422	919 / 493	0.60
Baseline Data				410 / 210		44			711 / 377	824 / 440	927 / 497	3





Sample Date	Iron	Chromium	Nickel	Aluminum	Copper	Lead	Tin	Cadmium	Silver	Vanadium	Silicon	Sodium	Potassium	Titanium	Molybdenum	Antimony	Manganese	Lithium	Boron	Magnesium	Calcium	Barium	Phosphorus	Zinc
10/27/20	15	0	0	0	2	0	0	0	0	0	2	0	0	0	0	0	0	0	0	0	2	0	0	7
Baseline Data			0	0						0			0	0				0	0				0	

Elemental analysis results (above) in parts per million (ppm). [10,000 ppm = 1.0%]



Historical Comments

Petro-Canada makes no representation or warranty of any kind, either express or implied, as to the accuracy or completeness of the analysis and assumes no responsibility and shall have no liability whatsoever with respect to such analysis, or a party's use of it. Petro-Canada is a division of HollyFrontier Corporation.