

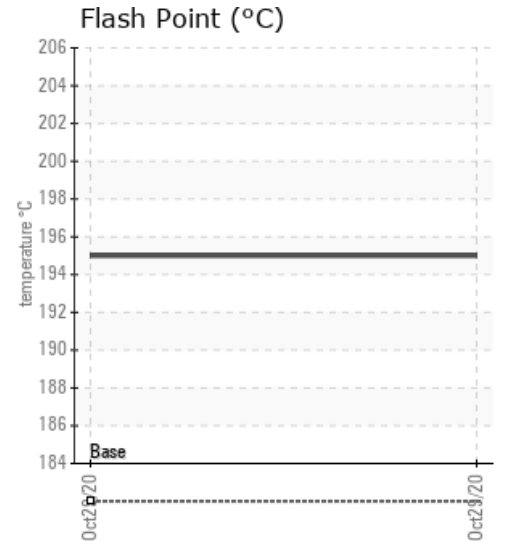
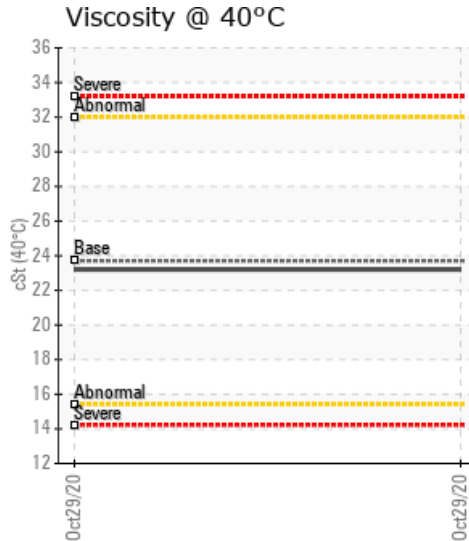
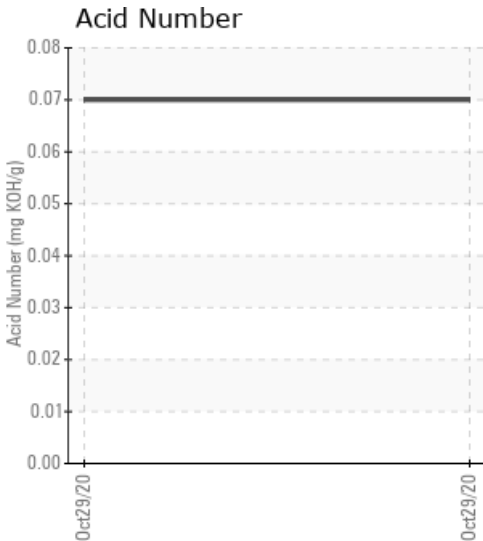
SPRING KITCHEN

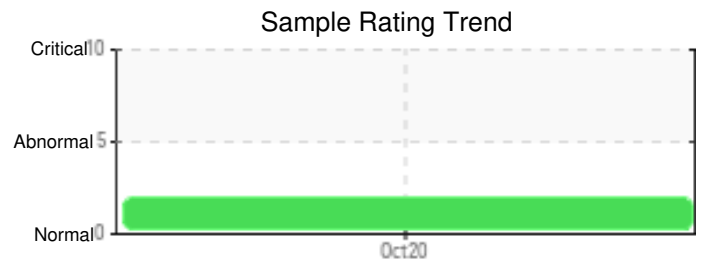
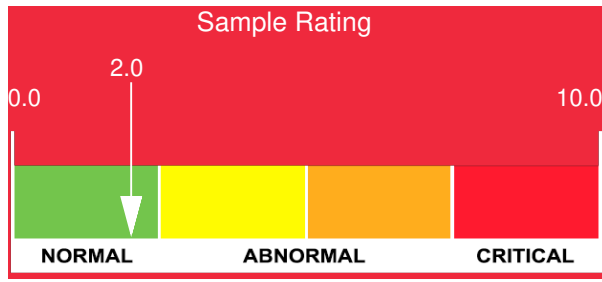
Customer: PTRHTF60010	System Information	Sample Information
SYNLUBE INTERNATIONAL CO LTD 76/1 MOO.7 THACHIN MUANG SAMUTSAKHON, 74000 THAILAND Attn: Kittisak Suthithanakom Tel: 6(681)850-1907 E-Mail: kittisak@synlube.co.th	System Volume: 12000 ltr Bulk Operating Temp: 536F / 280C Heating Source: Blanket: Fluid: EASTMAN THERMINOL XP Make: SCHERRER BOILER	Lab No: 02390509 Analyst: Philip Riley Sample Date: 10/29/20 Received Date: 12/01/20 Completed: 12/08/20 Philip Riley philip.riley@petrocanadalsp.com

Recommendation: Not a Petro-Canada product and unable to give detailed comments related to the chemistry and performance. Operating parameters within limits of Petro-Canada fluids so change is possible

Comments: (GCD) 90% Distillation Point is severely high.

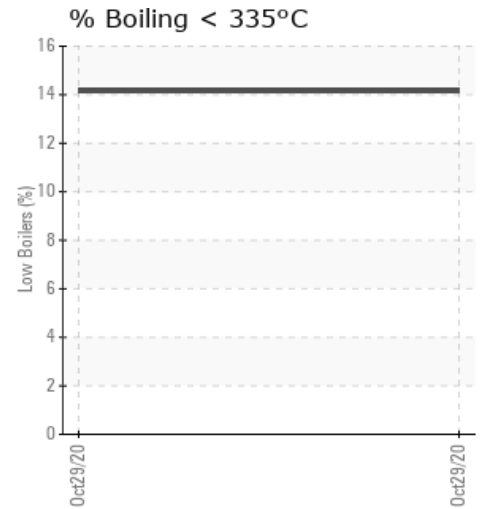
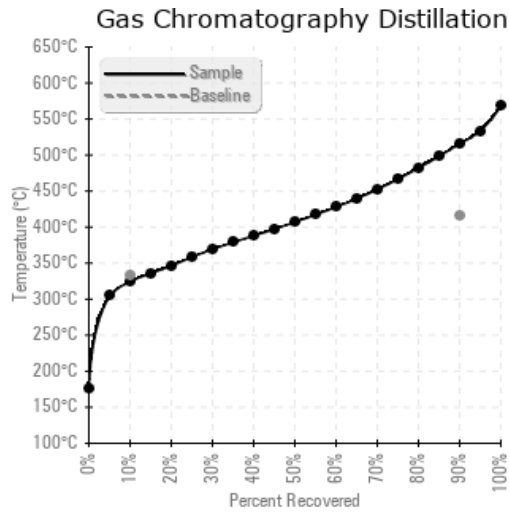
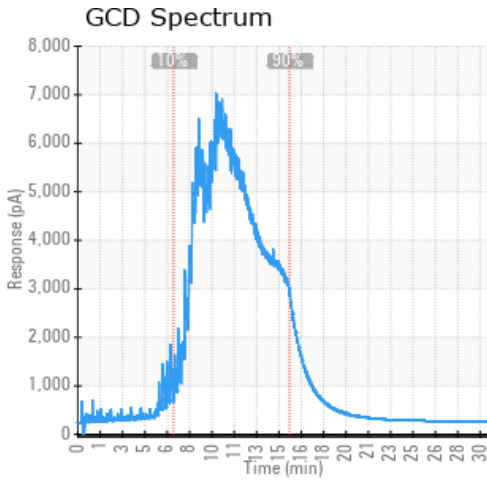
Sample Date	Received Date	Fluid Age	Sample Location	Flash Point (COC)	Water (KF)	Viscosity (40°C)	Acid Number	Solids	GCD 10%	GCD 50%	GCD 90%	GCD % < 335°C
	mm/dd/yy			°F/°C	ppm	cSt	mg/KOH/g	%wt	°F/°C	°F/°C	°F/°C	%
10/29/20	12/01/20	60m	supply and return	383 / 195	10.9	23.2	0.07	0.104	616 / 325	764 / 407	960 / 516	14.15
Baseline Data				360 / 182		23.7			630 / 332		781 / 416	





Sample Date	Iron	Chromium	Nickel	Aluminum	Copper	Lead	Tin	Cadmium	Silver	Vanadium	Silicon	Sodium	Potassium	Titanium	Molybdenum	Antimony	Manganese	Lithium	Boron	Magnesium	Calcium	Barium	Phosphorus	Zinc
10/29/20	0	0	0	0	0	0	0	0	0	0	0	0	0	0	0	0	0	0	0	0	0	0	0	0
Baseline Data			0	0						0			0	0					0				0	

Elemental analysis results (above) in parts per million (ppm). [10,000 ppm = 1.0%]



Historical Comments

Petro-Canada makes no representation or warranty of any kind, either express or implied, as to the accuracy or completeness of the analysis and assumes no responsibility and shall have no liability whatsoever with respect to such analysis, or a party's use of it. Petro-Canada is a division of HollyFrontier Corporation.