

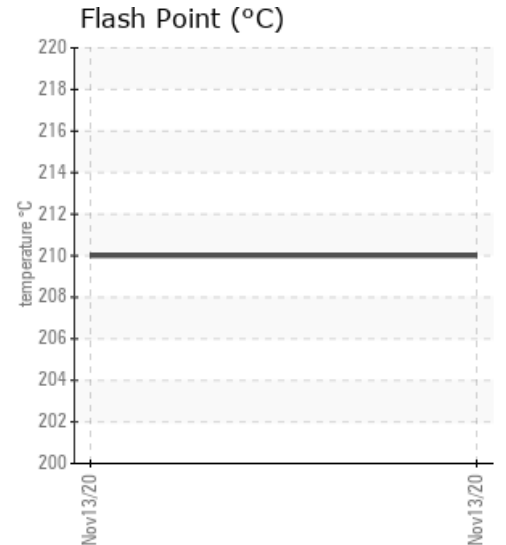
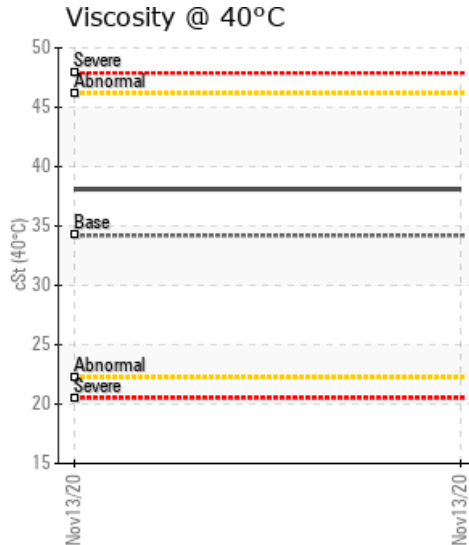
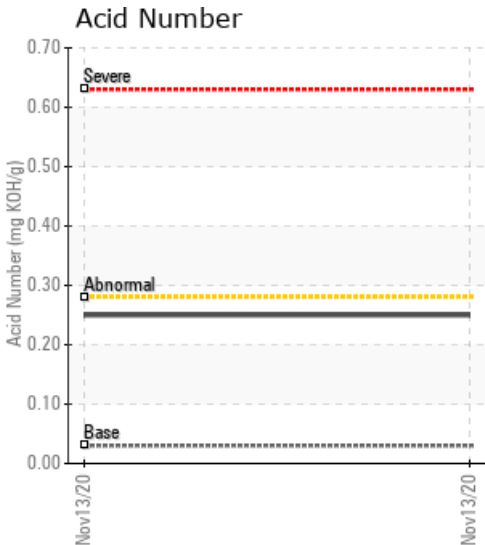
PLAN ST-ROSAIRE

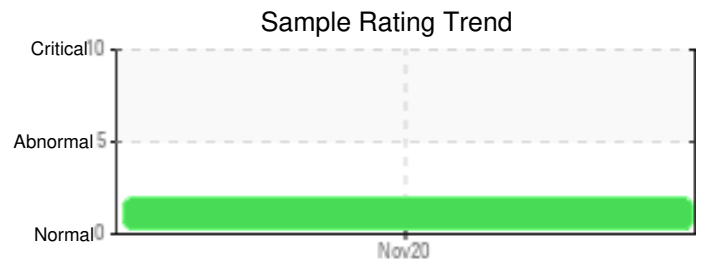
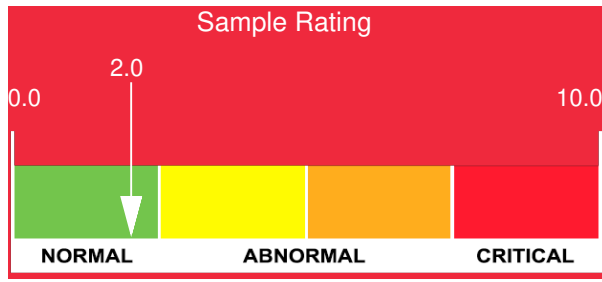
Customer: PTRHTF30163	System Information	Sample Information
LES EXCAVATION MARCHAND & FILS 345 RUE CARTIER VICTORIAVILLE, QC G6P 6S9 Canada Attn: Mario Hemond Tel: E-Mail: mario.hemond@emfvicto.com	System Volume: 3000 ltr Bulk Operating Temp: 356F / 180C Heating Source: Blanket: Fluid: PETRO CANADA PETRO-THERM Make:	Lab No: 02395038 Analyst: Pierre Castagne Sample Date: 11/13/20 Received Date: 12/24/20 Completed: 01/11/21 Pierre Castagne pierre.castagne@petrocanadalsp.com

Recommendation: Il y a une légère trace de bitume dans l'huile. Les fractions lourdes (GCD @90%) sont en hausse, il y a une légère baisse du point éclair. L'huile est OK, pour usage continue.

Comments:

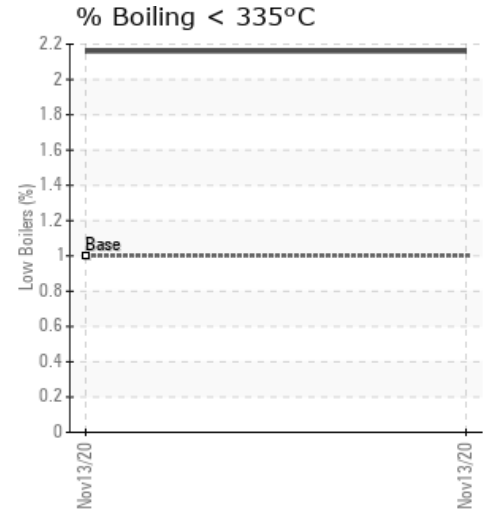
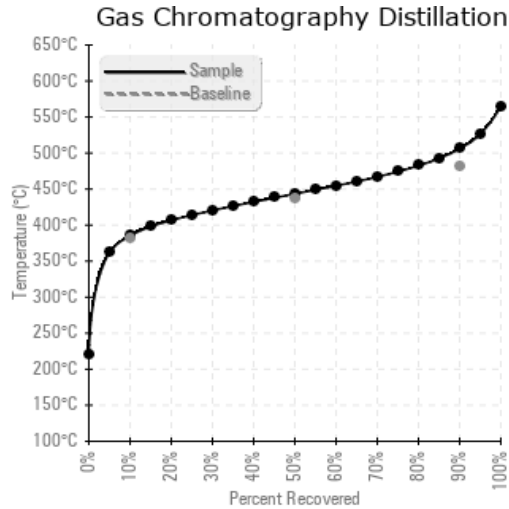
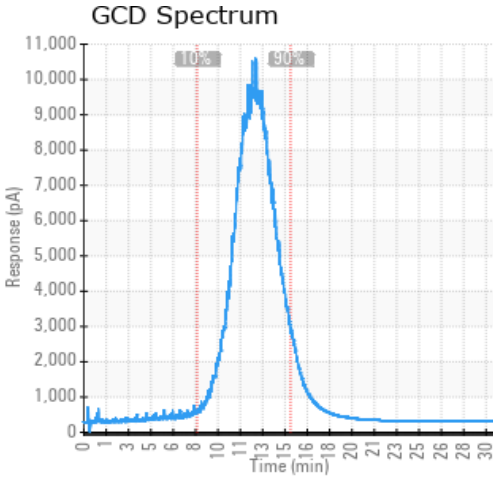
Sample Date	Received Date	Fluid Age	Sample Location	Flash Point (COC)	Water (KF)	Viscosity (40°C)	Acid Number	Solids	GCD 10%	GCD 50%	GCD 90%	GCD % < 335°C
	mm/dd/yy			°F/°C	ppm	cSt	mg/KOH/g	%wt	°F/°C	°F/°C	°F/°C	%
11/13/20	12/24/20	14000h	Dir. Bouilluire	410 / 210	18.4	38.1	0.25	0.099	726 / 385	830 / 444	943 / 506	2.16
Baseline Data				433 / 223		34.2	0.03		720 / 382	817 / 436	900 / 482	1.00





Sample Date	Iron	Chromium	Nickel	Aluminum	Copper	Lead	Tin	Cadmium	Silver	Vanadium	Silicon	Sodium	Potassium	Titanium	Molybdenum	Antimony	Manganese	Lithium	Boron	Magnesium	Calcium	Barium	Phosphorus	Zinc
11/13/20	0	0	0	0	0	0	0	0	0	0	2	0	0	0	0	0	0	0	0	0	0	0	0	0
Baseline Data			0	0						0			0	0					0				0	

Elemental analysis results (above) in parts per million (ppm). [10,000 ppm = 1.0%]



Historical Comments

Petro-Canada makes no representation or warranty of any kind, either express or implied, as to the accuracy or completeness of the analysis and assumes no responsibility and shall have no liability whatsoever with respect to such analysis, or a party's use of it. Petro-Canada is a division of HollyFrontier Corporation.