

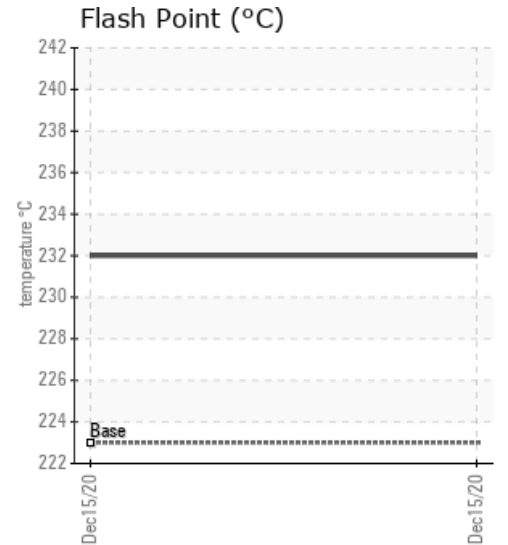
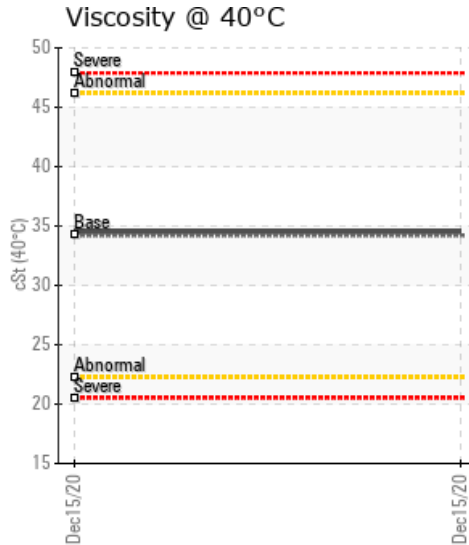
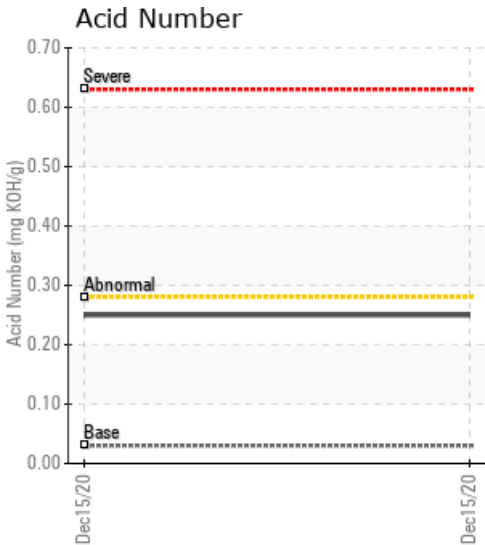
## LISBON IL

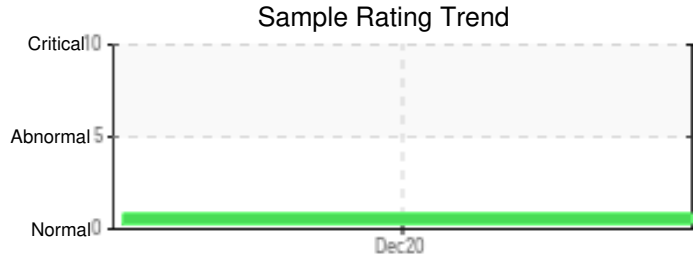
Customer: PTRHTF30107	System Information	Sample Information
D-CONSTRUCTION 16805 QUARRY RD MORRIS, IL 60450 USA Attn: Chris Lenzie Tel: (815)405-6831 E-Mail: clenzie@sandenoil.com	System Volume: 400 g Bulk Operating Temp: 350F / 177C Heating Source: Blanket: Fluid: PETRO CANADA PETRO-THERM Make: HEAT TECH	Lab No: 02395041 Analyst: Yvette Trzcinski Sample Date: 12/15/20 Received Date: 12/24/20 Completed: 01/04/21 Yvette Trzcinski yvette.trzcinski@petrocanadalsp.com

Recommendation: Sample specifications are all within acceptable limits and product looks good for continued service. Re-sample in 6-12 months

Comments: (GCD) 90% Distillation Point is marginally high.

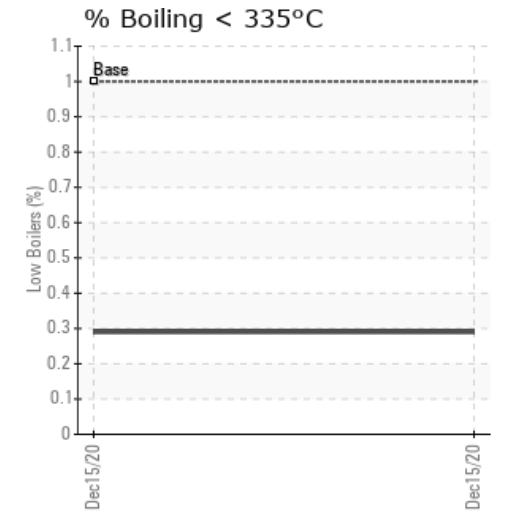
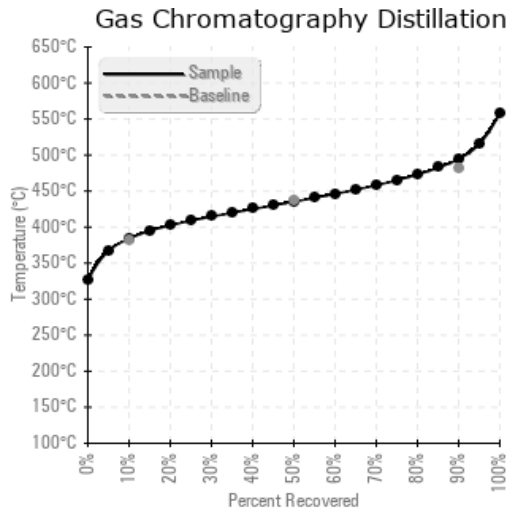
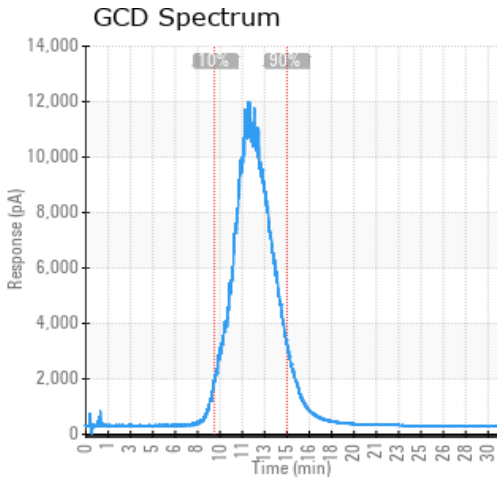
Sample Date	Received Date	Fluid Age	Sample Location	Flash Point (COC)	Water (KF)	Viscosity (40°C)	Acid Number	Solids	GCD 10%	GCD 50%	GCD 90%	GCD % < 335°C
	mm/dd/yy			°F/°C	ppm	cSt	mg/KOH/g	%wt	°F/°C	°F/°C	°F/°C	%
12/15/20	12/24/20	2y	Return	450 / 232	18.8	34.5	0.25	0.082	723 / 384	816 / 435	922 / 494	0.29
Baseline Data				433 / 223		34.2	0.03		720 / 382	817 / 436	900 / 482	1.00





Sample Date	Iron	Chromium	Nickel	Aluminum	Copper	Lead	Tin	Cadmium	Silver	Vanadium	Silicon	Sodium	Potassium	Titanium	Molybdenum	Antimony	Manganese	Lithium	Boron	Magnesium	Calcium	Barium	Phosphorus	Zinc
12/15/20	0	0	0	0	0	0	0	0	0	0	3	0	0	0	0	0	0	0	0	0	0	0	0	0
<b>Baseline Data</b>			0	0						0			0	0					0				0	

Elemental analysis results (above) in parts per million (ppm). [10,000 ppm = 1.0%]



### Historical Comments


Petro-Canada makes no representation or warranty of any kind, either express or implied, as to the accuracy or completeness of the analysis and assumes no responsibility and shall have no liability whatsoever with respect to such analysis, or a party's use of it. Petro-Canada is a division of HollyFrontier Corporation.