

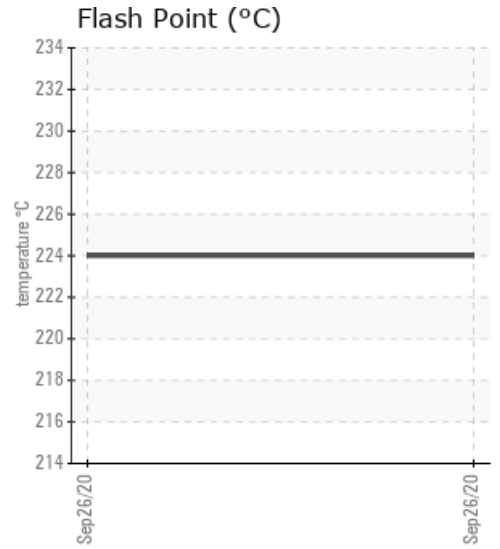
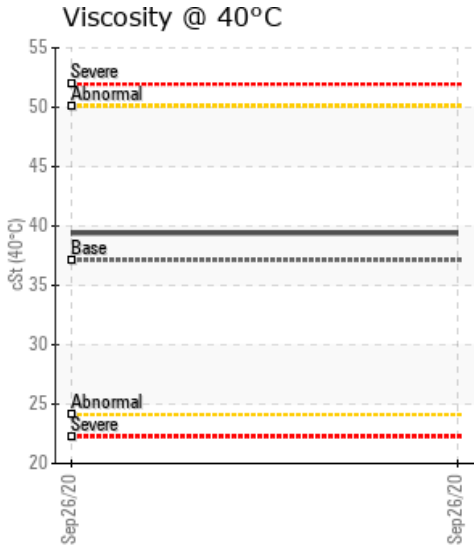
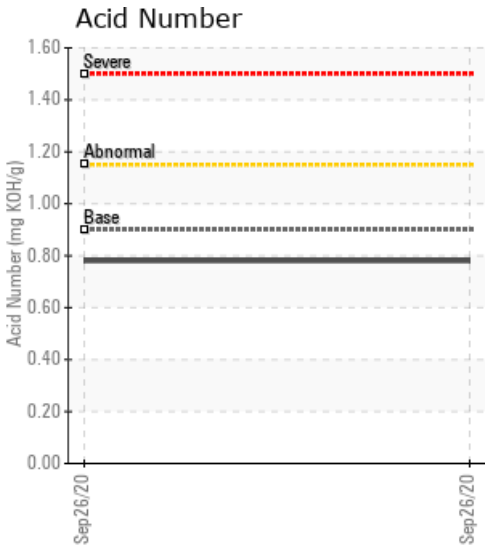
KORAT 2 (THAILAND) - RETURN

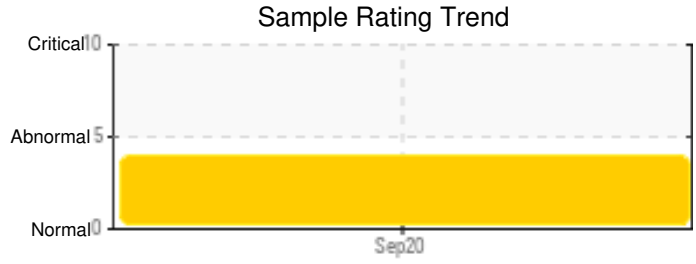
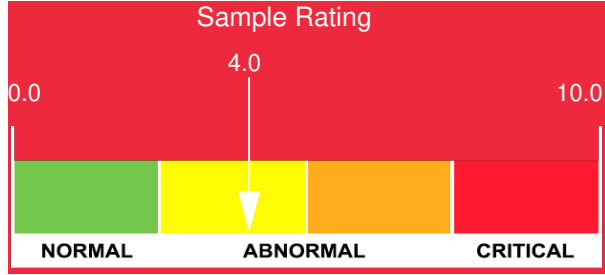
Customer: PTRHTF60010	System Information	Sample Information
SYNLUBE INTERNATIONAL CO LTD 76/1 MOO.7 THACHIN MUANG SAMUTSAKHON, 74000 THAILAND Attn: CHERNPORN CHOBKUI Tel: 034421290 E-Mail: chernporn@synlube.co.th	System Volume: 9020 ltr Bulk Operating Temp: 554F / 290C Heating Source: Blanket: Fluid: PETRO CANADA PURITY FG HEAT TRANSFER FLUID Make:	Lab No: 02399581 Analyst: Philip Riley Sample Date: 09/26/20 Received Date: 01/25/21 Completed: 02/10/21 Philip Riley philip.riley@hollyfrontier.com

Recommendation: Water is present at an unacceptable level in the fluid, which will affect the oil drain significantly. It is an external contamination that has entered the system and, if it can be safely removed, must be removed. The fluid viscosity has crept upwards, I suspect as a result of the contamination and this will promote oxidation of the fluid. Additionally you will see the acid number increase which could attack sensitive metals within the system. Water must be removed (if it can be done safely) and the source of water contamination must be identified.

Comments: Water contamination levels are severely high. Water contamination levels are severely high.. ppm Water contamination levels are severely high. (GCD) 90% Distillation Point is marginally high.

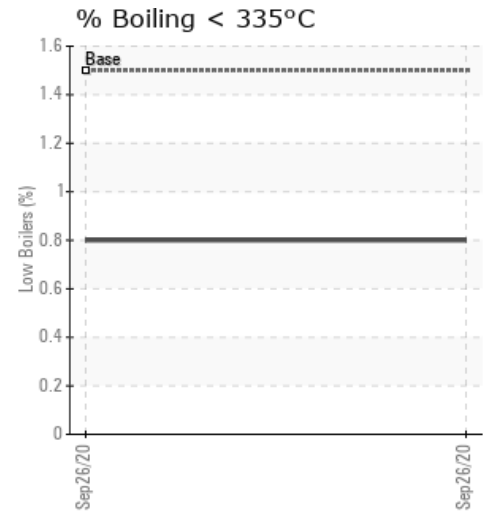
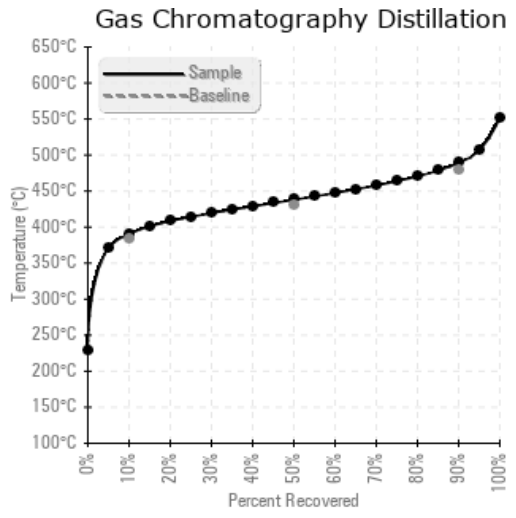
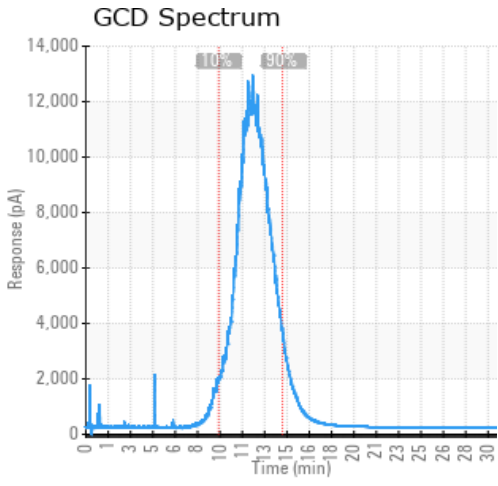
Sample Date	Received Date	Fluid Age	Sample Location	Flash Point (COC)	Water (KF)	Viscosity (40°C)	Acid Number	Solids	GCD 10%	GCD 50%	GCD 90%	GCD % < 335°C
	mm/dd/yy			°F/°C	ppm	cSt	mg/KOH/g	%wt	°F/°C	°F/°C	°F/°C	%
09/26/20	01/25/21	5.0m		435 / 224	5934.1	39.4	0.78	0.151	735 / 390	820 / 438	912 / 489	0.80
Baseline Data				459 / 237		37.12	0.90		721 / 383	807 / 431	892 / 478	1.5





Sample Date	Iron	Chromium	Nickel	Aluminum	Copper	Lead	Tin	Cadmium	Silver	Vanadium	Silicon	Sodium	Potassium	Titanium	Molybdenum	Antimony	Manganese	Lithium	Boron	Magnesium	Calcium	Barium	Phosphorus	Zinc
09/26/20	25	0	0	0	0	0	0	0	0	0	0	0	0	0	0	0	0	0	0	0	0	0	12	1
Baseline Data			0	0						0			0	0				0	0				230	

Elemental analysis results (above) in parts per million (ppm). [10,000 ppm = 1.0%]



Historical Comments

Petro-Canada makes no representation or warranty of any kind, either express or implied, as to the accuracy or completeness of the analysis and assumes no responsibility and shall have no liability whatsoever with respect to such analysis, or a party's use of it. Petro-Canada is a division of HollyFrontier Corporation.