

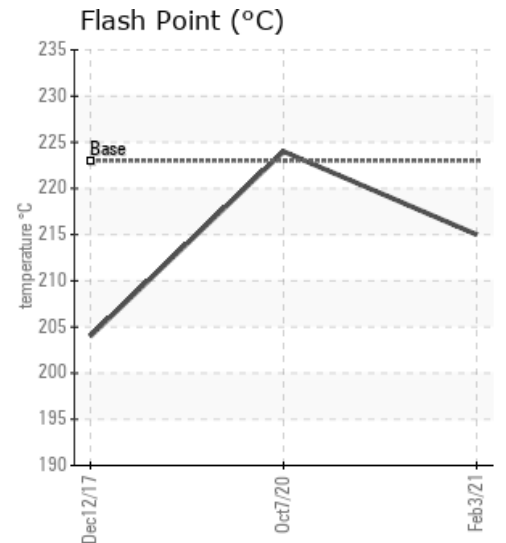
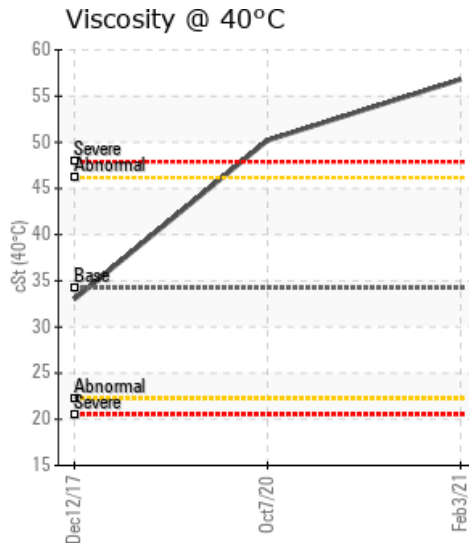
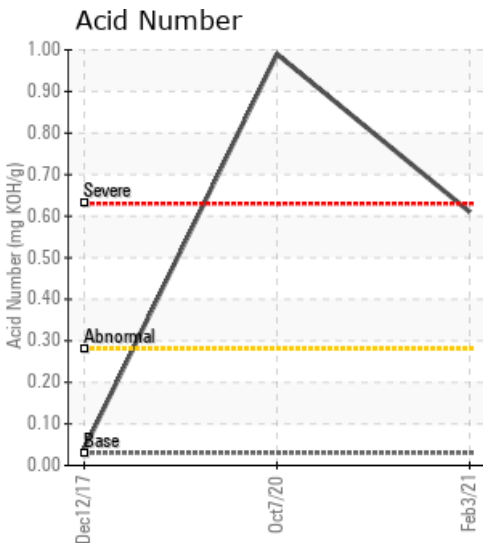
[2-25-38-9W5] Z-530 REFRIDGE

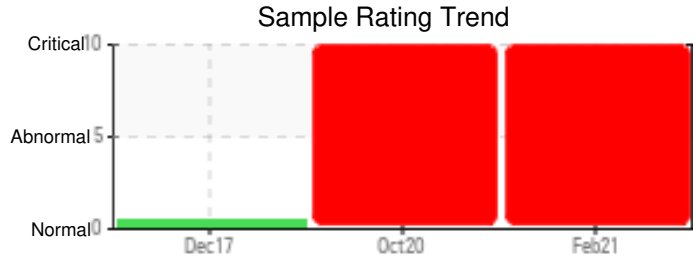
Customer: PTRHTF20192	System Information	Sample Information
Petrus Resources Corp 2400, 240 – 4th Avenue S.W. 02-25-38-9W5 Rocky Mountain House Calgary, AB T2P 4H4 Canada Attn: Jamin Severson Tel: (403)844-0600 E-Mail: jseverson@petrusresources.com	System Volume: 13000 ltr Bulk Operating Temp: 464F / 240C Heating Source: Blanket: Fluid: PETRO CANADA PETRO-THERM Make: ALCO	Lab No: 02403205 Analyst: Terry Veenstra Sample Date: 02/03/21 Received Date: 02/10/21 Completed: 02/18/21 Terry Veenstra terry.veenstra@hollyfrontier.com

Recommendation: Viscosity is very high. Acid number is very high. Pentane Insolubles are very high. Sample location shows that it was taken from a bottom drain. Ensure gas blanket is in place. Consider filtration of oil or system cleaning and fluid change.

Comments: Iron ppm levels are severe. PQ levels are severe. Pentane Insolubles levels are severely high. Visc @ 40°C is severely high. Acid Number (AN) is abnormally high.

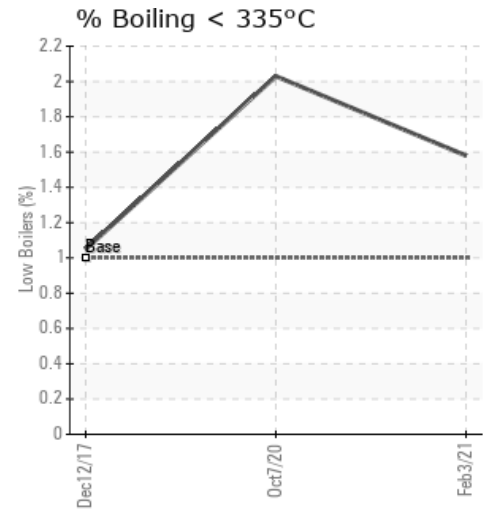
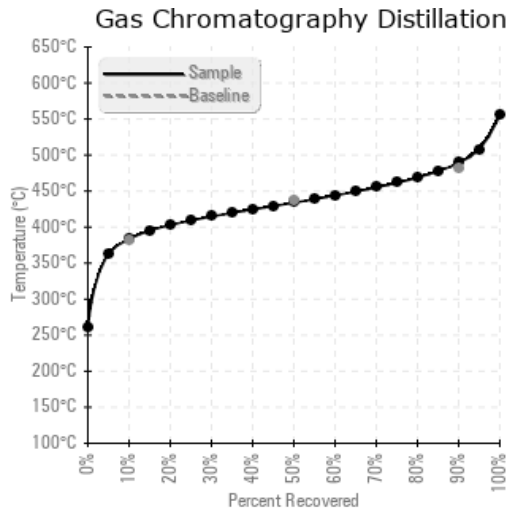
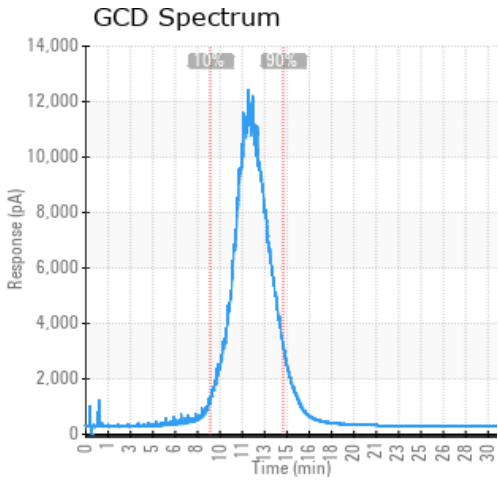
Sample Date	Received Date	Fluid Age	Sample Location	Flash Point (COC)	Water (KF)	Viscosity (40°C)	Acid Number	Solids	GCD 10%	GCD 50%	GCD 90%	GCD % < 335°C
	mm/dd/yy			°F/°C	ppm	cSt	mg/KOH/g	%wt	°F/°C	°F/°C	°F/°C	%
02/03/21	02/10/21	6.0y	Bottom of sight glas	419 / 215	24.4	56.8	0.61	2.73	722 / 383	813 / 434	912 / 489	1.58
10/07/20	10/08/20	5.0y	Bottom Drain	435 / 224	156.0	50.2	0.99	2.44	719 / 382	812 / 434	911 / 488	2.03
12/12/17	12/22/17	2.0y		399 / 204	9.3	33.0	0.04	0.239	720 / 382	816 / 436	913 / 490	1.05
Baseline Data				433 / 223		34.2	0.03		720 / 382	817 / 436	900 / 482	1.00





Sample Date	Iron	Chromium	Nickel	Aluminum	Copper	Lead	Tin	Cadmium	Silver	Vanadium	Silicon	Sodium	Potassium	Titanium	Molybdenum	Antimony	Manganese	Lithium	Boron	Magnesium	Calcium	Barium	Phosphorus	Zinc
02/03/21	506	0	0	0	0	0	0	0	0	0	1	0	0	0	0	0	6	0	0	0	0	0	0	0
10/07/20	587	0	0	0	0	0	0	0	0	0	1	0	0	0	0	0	6	0	0	0	0	0	0	0
12/12/17	7	0	0	0	0	0	0	0	0	0	1	0	0	0	0	0	0	0	0	0	0	0	0	0
Baseline Data			0	0						0			0	0					0				0	

Elemental analysis results (above) in parts per million (ppm). [10,000 ppm = 1.0%]



Historical Comments	
10/07/20	Viscosity is very high. Acid number is very high. Pentane Insolubles are very high. Sample location shows that it was taken from a bottom drain. This may not be representative of the fluid in the system. Suggest resampling in a location where oil is flowing. Iron ppm levels are severe. PQ levels are severe. Pentane Insolubles levels are severely high. Acid Number (AN) is severely high. Visc @ 40°C is severely high.
12/12/17	This sample is in god condition and oil is good for continued use. Resample in 12 months.

Petro-Canada makes no representation or warranty of any kind, either express or implied, as to the accuracy or completeness of the analysis and assumes no responsibility and shall have no liability whatsoever with respect to such analysis, or a party's use of it. Petro-Canada is a division of HollyFrontier Corporation.