

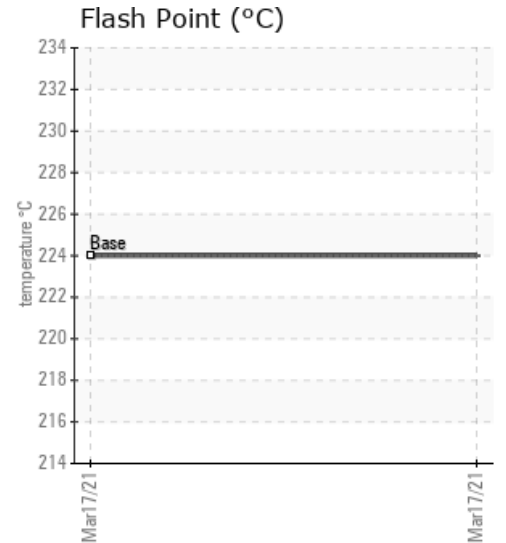
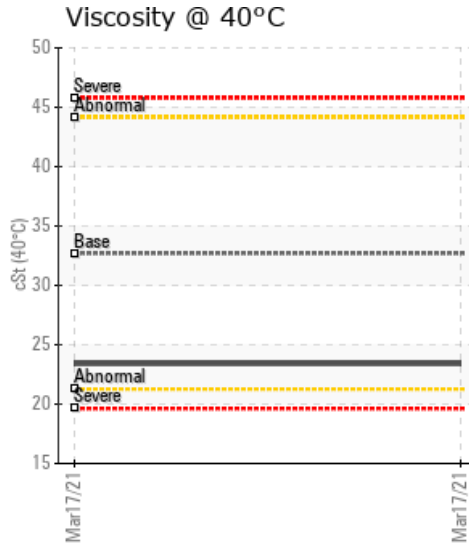
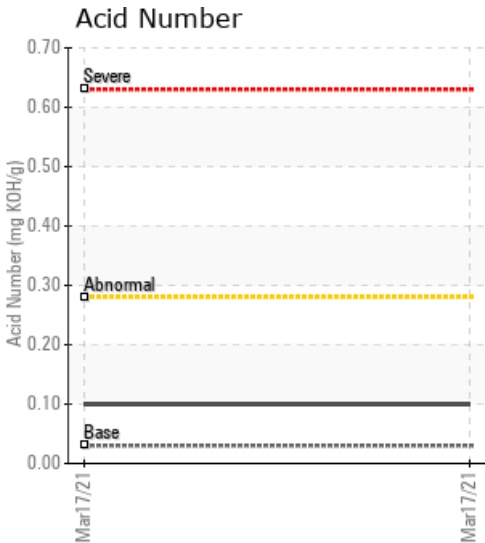
RF04 GODET BOILER 2

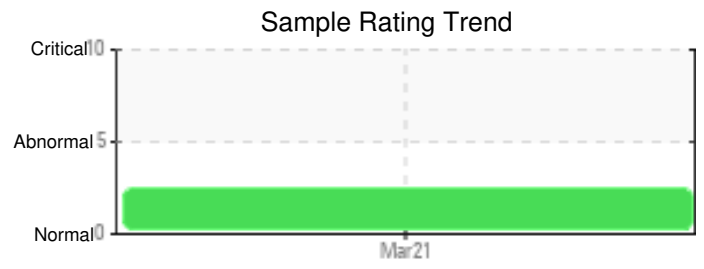
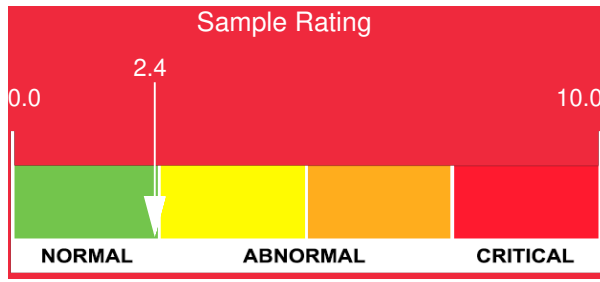
Customer: PTRHTF10057	System Information	Sample Information
PROPEX RINGGOLD PLANT 428 ROLLINS INDUSTRIAL BLVD RINGGOLD, GA 30736 USA Attn: MITCH HELTON Tel: (423)553-3723 E-Mail: MITCH.HELTON@PROPEXGLO BAL.COM	System Volume: 0 gal Bulk Operating Temp: 400F / 204C Heating Source: Blanket: Fluid: PETRO CANADA CALFLO AF Make:	Lab No: 02413407 Analyst: Jake Finn Sample Date: 03/17/21 Received Date: 04/06/21 Completed: 04/19/21 Jake Finn jake.finn@hollyfrontier.com

Recommendation: This sample shows signs of copper and elevated 10% and 90% distillation points. The condition of the fluid is within specification however, and is suitable for continued use. Please resubmit for testing in one year.

Comments: Copper ppm levels are abnormal. (GCD) 90% Distillation Point is abnormally high. (GCD) 10% Distillation Point is marginally high.

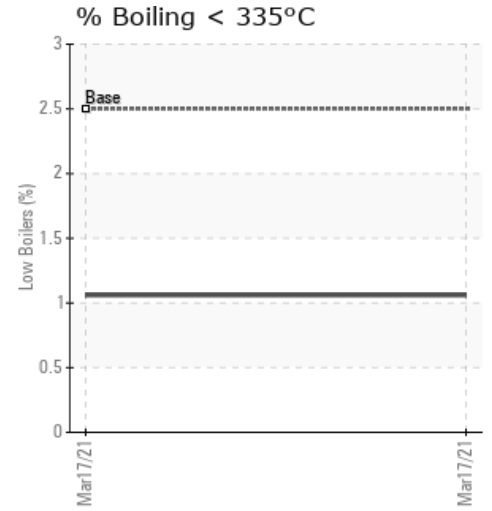
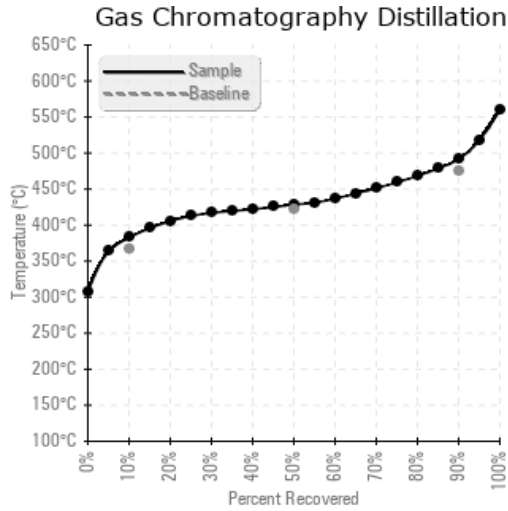
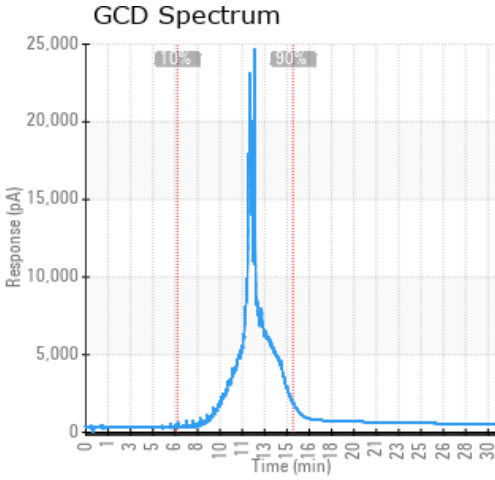
Sample Date	Received Date	Fluid Age	Sample Location	Flash Point (COC)	Water (KF)	Viscosity (40°C)	Acid Number	Solids	GCD 10%	GCD 50%	GCD 90%	GCD % < 335°C
	mm/dd/yy			°F/°C	ppm	cSt	mg/KOH/g	%wt	°F/°C	°F/°C	°F/°C	%
03/17/21	04/06/21	0.0h		435 / 224	8.0	23.4	0.10	0.126	721 / 383	803 / 429	916 / 491	1.06
Baseline Data				435 / 224		32.7	0.03		693 / 367	790 / 421	887 / 475	2.5





Sample Date	Iron	Chromium	Nickel	Aluminum	Copper	Lead	Tin	Cadmium	Silver	Vanadium	Silicon	Sodium	Potassium	Titanium	Molybdenum	Antimony	Manganese	Lithium	Boron	Magnesium	Calcium	Barium	Phosphorus	Zinc	
03/17/21	14	0	0	0	23	0	2	0	0	0	2	0	0	0	0	0	0	0	0	0	0	0	0	132	1
Baseline Data			0	0						0			0	0					0					270	

Elemental analysis results (above) in parts per million (ppm). [10,000 ppm = 1.0%]



Historical Comments

Petro-Canada makes no representation or warranty of any kind, either express or implied, as to the accuracy or completeness of the analysis and assumes no responsibility and shall have no liability whatsoever with respect to such analysis, or a party's use of it. Petro-Canada is a division of HollyFrontier Corporation.