

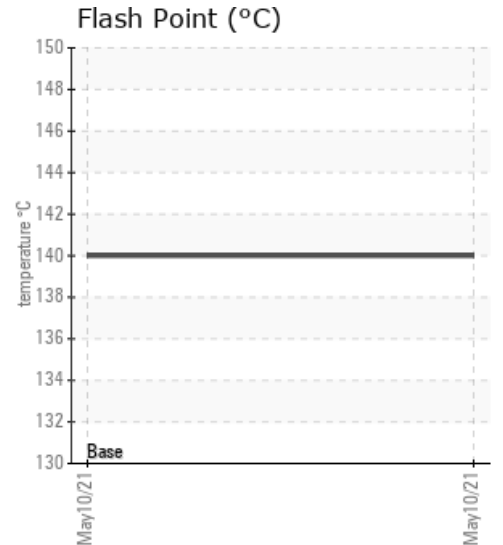
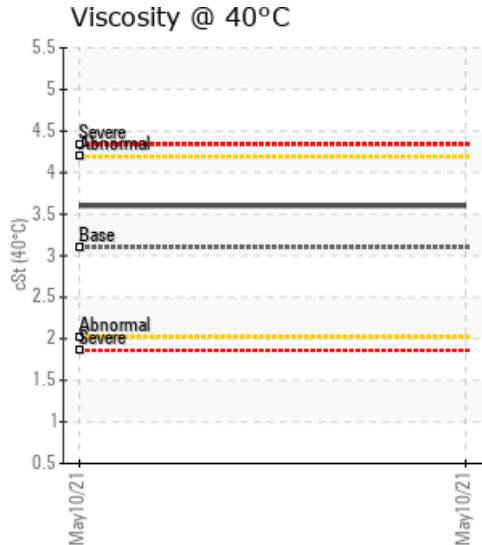
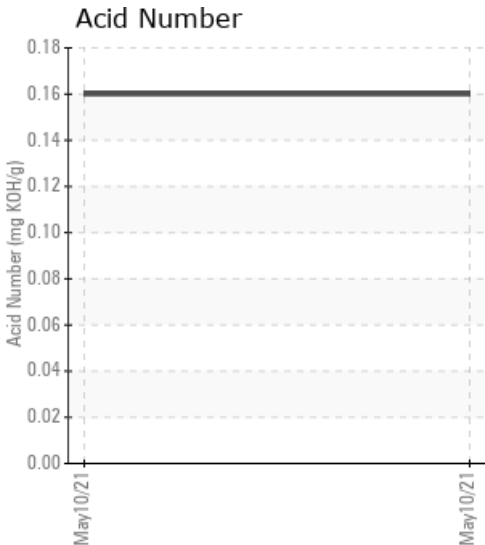
## PHASE 1 HOT OIL

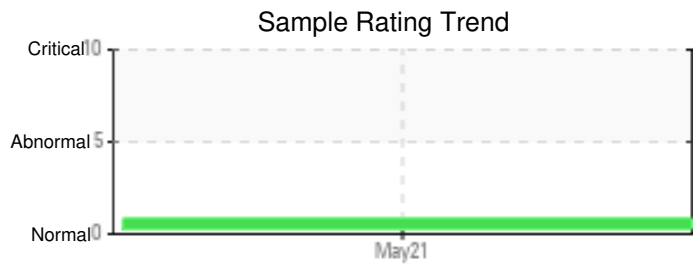
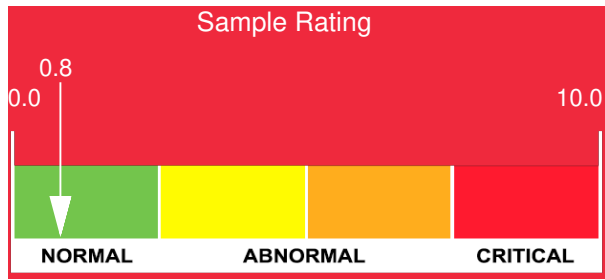
Customer: PTRHTF20253	System Information	Sample Information
Plains Midstream Canada LCD 1 SOUTH PO BOX 1150 EMPRESS, AB T0J 1E0 Canada Attn: Sandeep Sekhon Tel: E-Mail:	System Volume: 0 gal Bulk Operating Temp: Not Specified Heating Source: Blanket: Fluid: ESSO OIL 1156 Make:	Lab No: 02421187 Analyst: Kevin McDermott Sample Date: 05/10/21 Received Date: 05/13/21 Completed: 06/15/21 Kevin McDermott kevin.mcdermott@hollyfrontier.com

Recommendation: Fluid condition shows no sign of contamination, thermal degradation or oxidation therefore suitable for continued use.

Comments: COC Flash Point is abnormally high, likely due to the partial charge of Thermoil 32 / Petro-Therm. Same applies to the slight increase in viscosity.

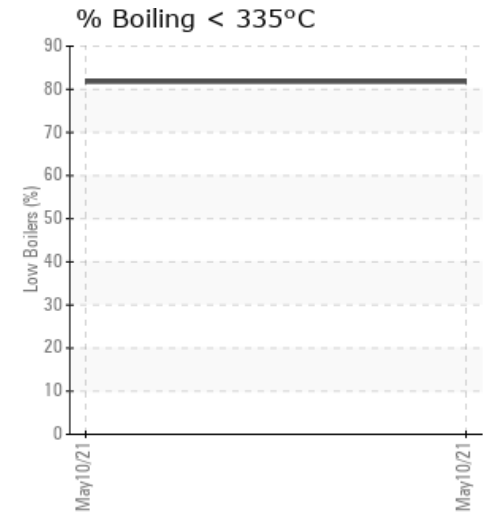
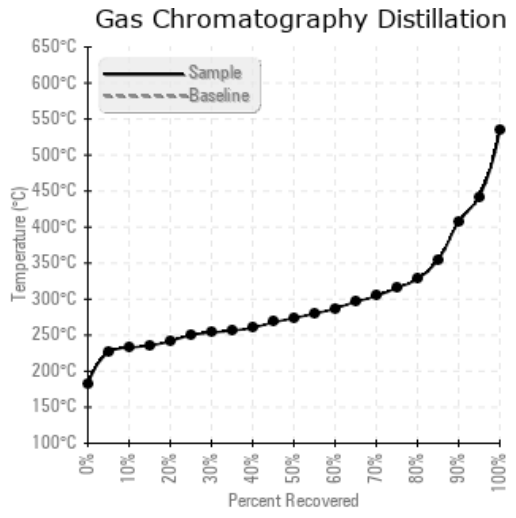
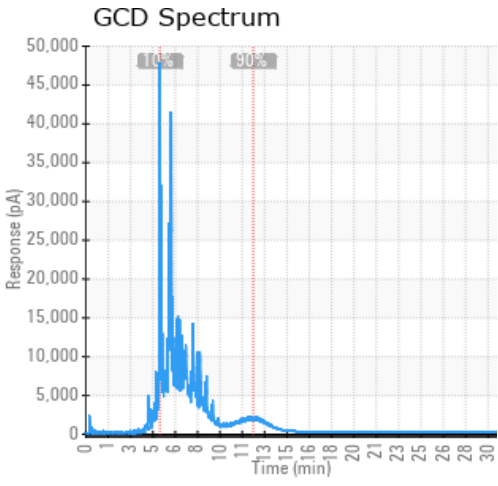
Sample Date	Received Date	Fluid Age	Sample Location	Flash Point (COC)	Water (KF)	Viscosity (40°C)	Acid Number	Solids	GCD 10%	GCD 50%	GCD 90%	GCD % < 335°C
	mm/dd/yy			°F/°C	ppm	cSt	mg/KOH/g	%wt	°F/°C	°F/°C	°F/°C	%
05/10/21	05/13/21	0.0y	Phase 1	284 / 140	40.2	3.6	0.16	0.177	451 / 233	525 / 274	765 / 407	81.77
Baseline Data				212 / 100		3.1						





Sample Date	Iron	Chromium	Nickel	Aluminum	Copper	Lead	Tin	Cadmium	Silver	Vanadium	Silicon	Sodium	Potassium	Titanium	Molybdenum	Antimony	Manganese	Lithium	Boron	Magnesium	Calcium	Barium	Phosphorus	Zinc
05/10/21	0	0	0	0	0	0	0	0	0	0	1	0	0	0	0	0	0	0	1	0	0	0	0	0
<b>Baseline Data</b>			0	0						0			0	0					0				0	

Elemental analysis results (above) in parts per million (ppm). [10,000 ppm = 1.0%]



### Historical Comments


Petro-Canada makes no representation or warranty of any kind, either express or implied, as to the accuracy or completeness of the analysis and assumes no responsibility and shall have no liability whatsoever with respect to such analysis, or a party's use of it. Petro-Canada is a division of HollyFrontier Corporation.