

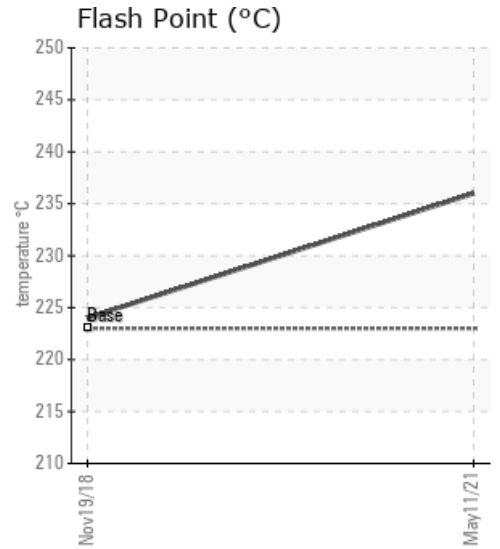
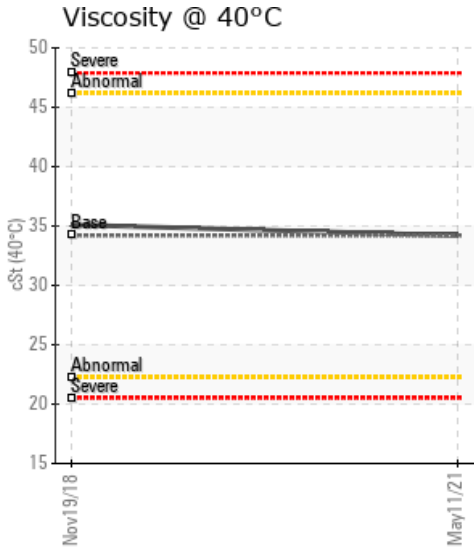
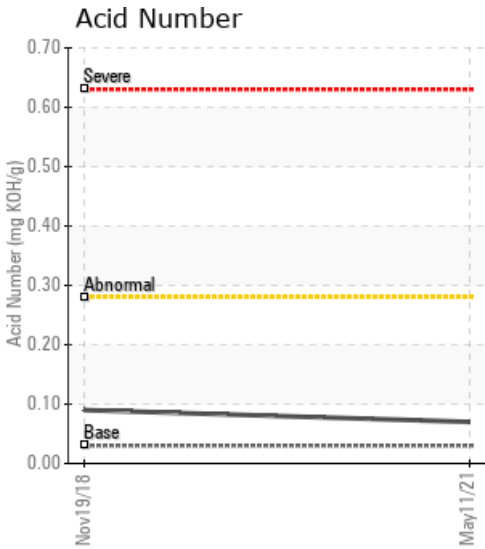
**[SIMONETTE GAS PLANT / LSD: 9-6-63-25-W5] H6620 LHE**

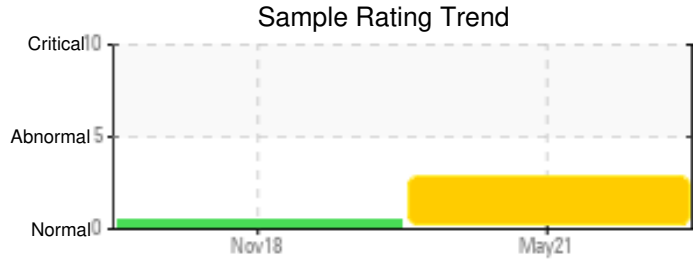
Customer: PTRHTF20187	System Information	Sample Information
KEYERA ENERGY- SIMONETTE GAS PLANT PO BOX 58 VALLEYVIEW, AB T0H 3N0 Canada Attn: Brody Shilka Tel: (780)835-1861 E-Mail: brody_shilka@keyera.com	System Volume: 27000 ltr Bulk Operating Temp: 428F / 220C Heating Source: Blanket: Fluid: PETRO CANADA PETRO-THERM Make: PETROTECH	Lab No: 02421968 Analyst: Clinton Buhler Sample Date: 05/11/21 Received Date: 05/18/21 Completed: 05/28/21 Clinton Buhler Clinton.Buhler@hollyfrontier.com

Recommendation: Sample results indicate that the fluid is in suitable condition for continued service. Elevated water levels may be associated to how and where the sample was taken. The expansion tank is not ideal for a sample point as it may not see full system flow or temperature and may not represent system condition. Please sample from a hot, turbulent zone and not from low spots or site glasses, etc.... Pump discharge is the most ideal sample location preceded by a thorough purge of the sample valve and tubing. Please re-sample in 6 months

Comments:

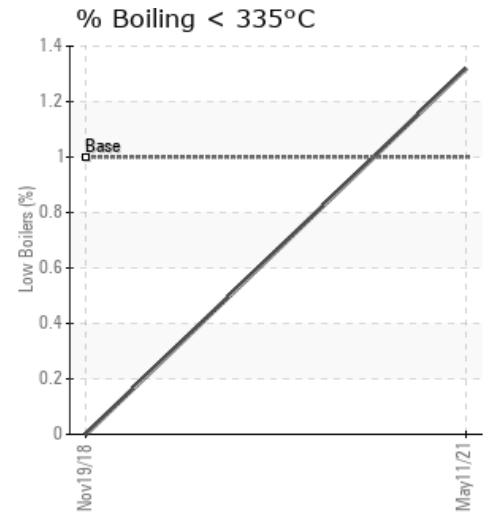
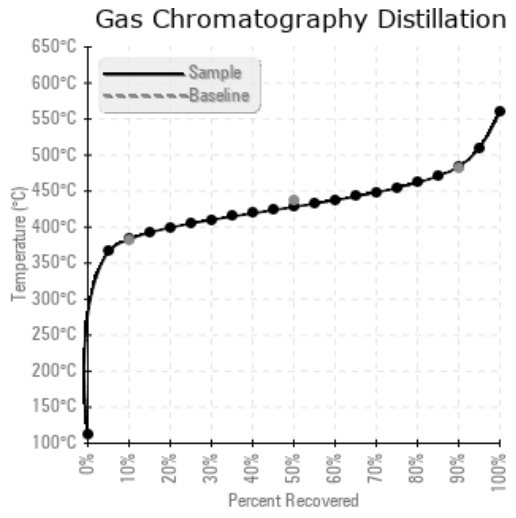
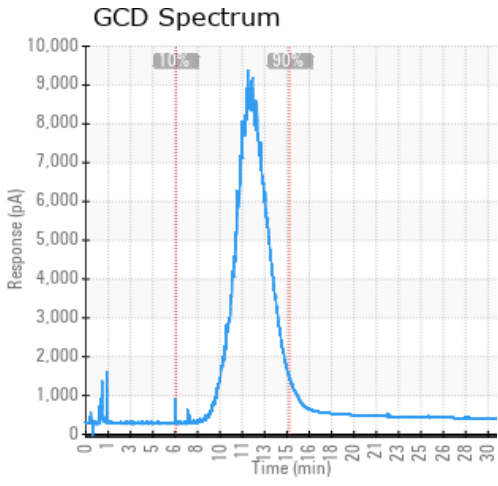
Sample Date	Received Date	Fluid Age	Sample Location	Flash Point (COC)	Water (KF)	Viscosity (40°C)	Acid Number	Solids	GCD 10%	GCD 50%	GCD 90%	GCD % < 335°C
	mm/dd/yy			°F/°C	ppm	cSt	mg/KOH/g	%wt	°F/°C	°F/°C	°F/°C	%
05/11/21	05/18/21	36.0m	EXPANSION TANK	457 / 236	468.0	34.2	0.07	0.077	721 / 383	802 / 428	903 / 484	1.32
11/19/18	11/29/18	6.0m		435 / 224	32.2	35.1	0.09	0.034	726 / 385	813 / 434	918 / 492	0.00
Baseline Data				433 / 223		34.2	0.03		720 / 382	817 / 436	900 / 482	1.00





Sample Date	Iron	Chromium	Nickel	Aluminum	Copper	Lead	Tin	Cadmium	Silver	Vanadium	Silicon	Sodium	Potassium	Titanium	Molybdenum	Antimony	Manganese	Lithium	Boron	Magnesium	Calcium	Barium	Phosphorus	Zinc
05/11/21	3	0	0	0	0	0	0	0	0	0	0	0	0	0	0	0	0	0	0	0	0	0	0	0
11/19/18	1	0	0	0	0	0	0	0	0	0	0	0	0	0	0	0	0	0	0	0	0	0	0	0
Baseline Data			0	0						0			0	0					0				0	

Elemental analysis results (above) in parts per million (ppm). [10,000 ppm = 1.0%]



### Historical Comments

11/19/18	The fluid is in excellent condition and suitable for further use. Please re-sample in 6 months.

Petro-Canada makes no representation or warranty of any kind, either express or implied, as to the accuracy or completeness of the analysis and assumes no responsibility and shall have no liability whatsoever with respect to such analysis, or a party's use of it. Petro-Canada is a division of HollyFrontier Corporation.