

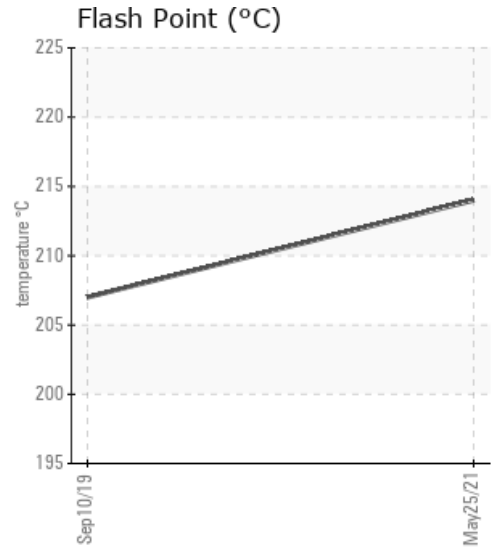
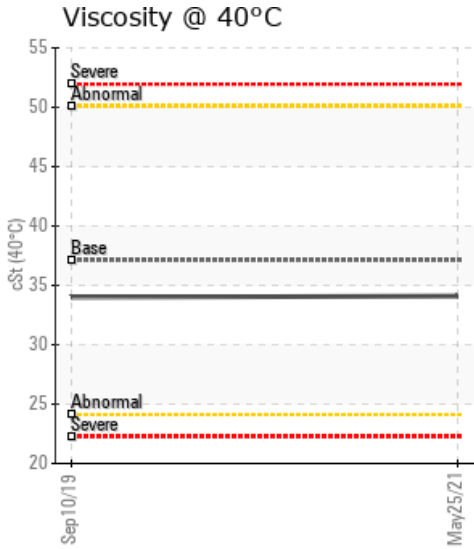
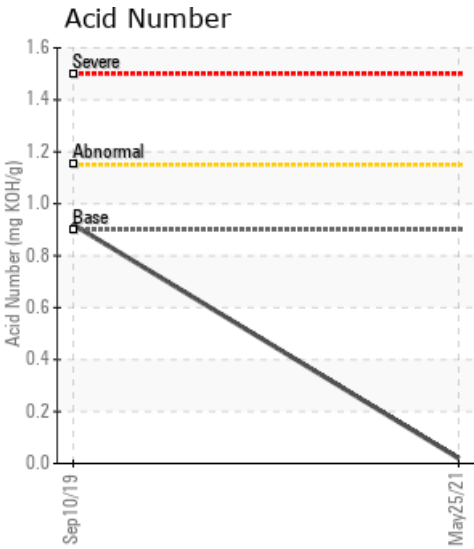
TPC800LNE-MP

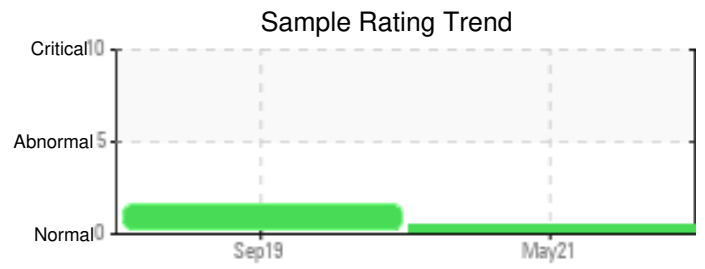
Customer: PTRHTF40132	System Information	Sample Information
Storteboom Barneveld B.V. Hanzeweg 22 Barneveld, ZZ 3771 N6 Netherlands Attn: Service Manager Tel: E-Mail: w.snyers@klt.nl	System Volume: 1000 ltr Bulk Operating Temp: 545F / 285C Heating Source: Blanket: Fluid: PETRO CANADA PURITY FG HEAT TRANSFER FLUID Make: WANSON	Lab No: 02424210 Analyst: Alexander Panov Sample Date: 05/25/21 Received Date: 05/31/21 Completed: 06/28/21 Alexander Panov alex.panov@hollyfrontier.com

Recommendation: Oil fit for further use, please sample at next planned sample interval.

Comments:

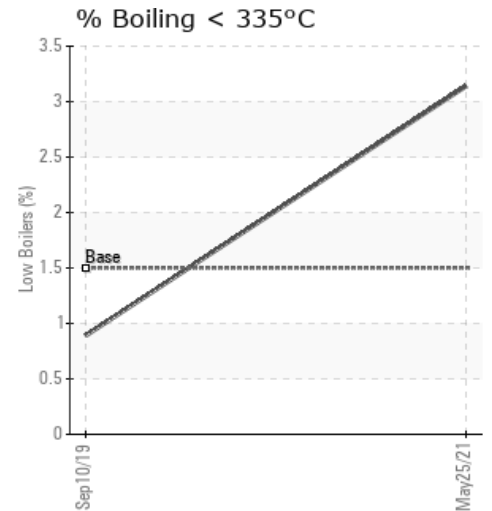
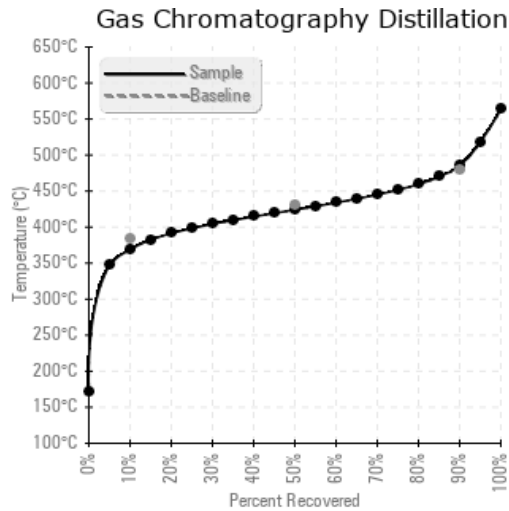
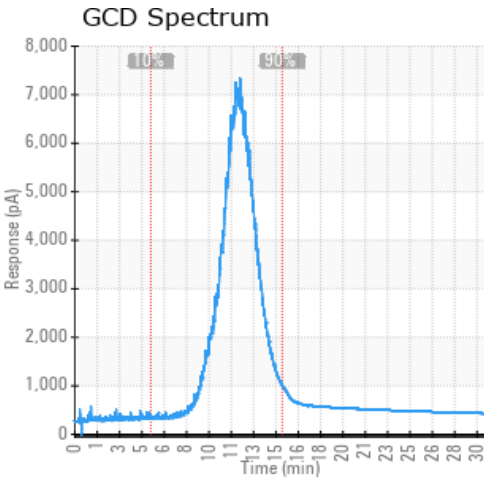
Sample Date	Received Date	Fluid Age	Sample Location	Flash Point (COC)	Water (KF)	Viscosity (40°C)	Acid Number	Solids	GCD 10%	GCD 50%	GCD 90%	GCD % < 335°C
	mm/dd/yy			°F/°C	ppm	cSt	mg/KOH/g	%wt	°F/°C	°F/°C	°F/°C	%
05/25/21	05/31/21	2.5y		417 / 214	33.2	34.1	0.02	0.268	696 / 369	795 / 424	906 / 485	3.14
09/10/19	09/19/19	1.0y		405 / 207	24.1	34.0	0.920	0.126	725 / 385	824 / 440	916 / 491	0.89
Baseline Data				459 / 237		37.12	0.90		721 / 383	807 / 431	892 / 478	1.5





Sample Date	Iron	Chromium	Nickel	Aluminum	Copper	Lead	Tin	Cadmium	Silver	Vanadium	Silicon	Sodium	Potassium	Titanium	Molybdenum	Antimony	Manganese	Lithium	Boron	Magnesium	Calcium	Barium	Phosphorus	Zinc
05/25/21	28	0	0	0	0	0	0	0	0	0	0	0	0	0	0	0	0	0	0	0	0	0	42	1
09/10/19	8	0	0	0	0	0	0	0	0	0	0	0	0	0	0	0	0	0	0	0	0	0	43	1
Baseline Data			0	0						0			0	0				0	0				230	

Elemental analysis results (above) in parts per million (ppm). [10,000 ppm = 1.0%]



Historical Comments	
09/10/19	COC slightly low. Oil fit for further use, please sample at next planned point (GCD) 90% Distillation Point is marginally high. COC Flash Point is marginally low.

Petro-Canada makes no representation or warranty of any kind, either express or implied, as to the accuracy or completeness of the analysis and assumes no responsibility and shall have no liability whatsoever with respect to such analysis, or a party's use of it. Petro-Canada is a division of HollyFrontier Corporation.