

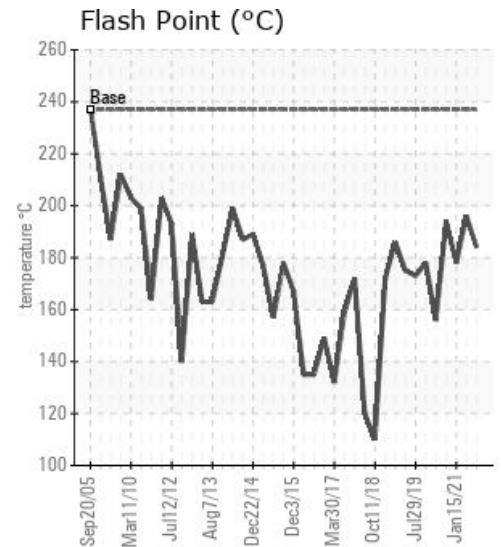
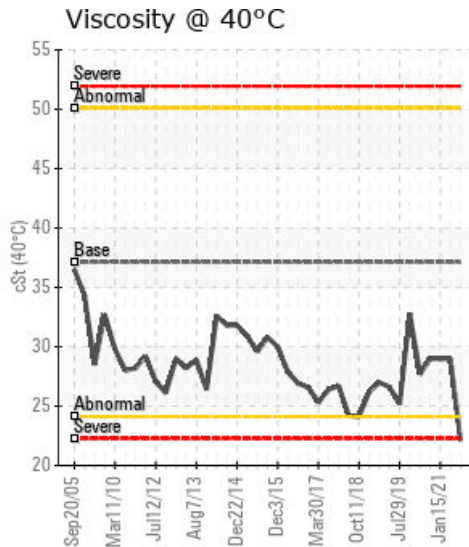
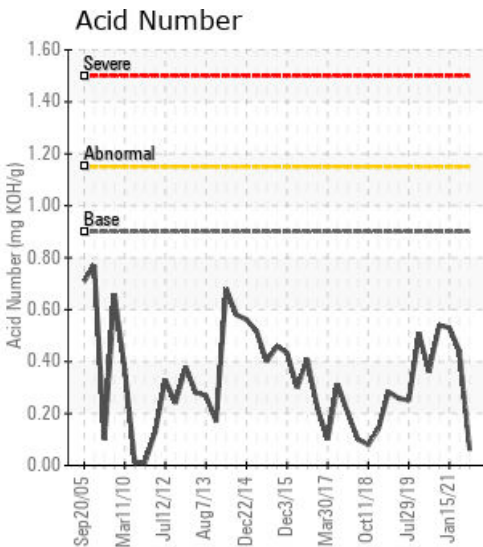
[VIT E 116] EAST

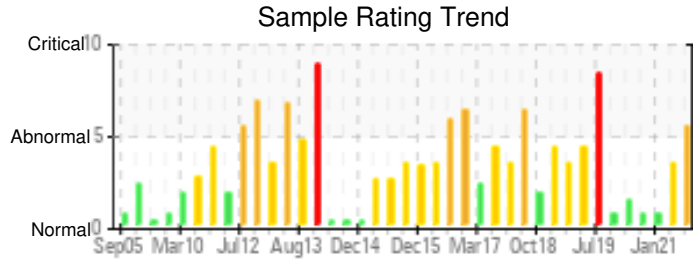
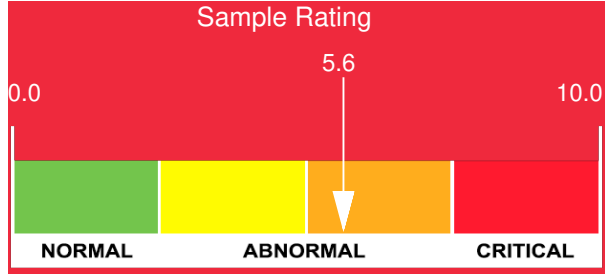
Customer: PTRHTF10004	System Information	Sample Information
ADM VITAMIN E PLANT 3700 EAST DIVISION STREET DECATUR, IL 62526 USA Attn: Rick Cluck Tel: (217)451-7770 E-Mail: ricky.cluck@adm.com	System Volume: 2200 gal Bulk Operating Temp: 550F / 288C Heating Source: Blanket: Fluid: PETRO CANADA PURITY FG HEAT TRANSFER FLUID Make: AMERICAN HEATING	Lab No: 02436776 Analyst: Yvette Trzcinski Sample Date: 07/23/21 Received Date: 08/04/21 Completed: 08/10/21 Yvette Trzcinski yvette.trzcinski@hollyfrontier.com

Recommendation: The viscosity has dropped by 24% as the GCD < 335 C is increasing gone from 8% to 11% it is reaching the critical limit of 15%. The GCD 10% temperature has also dropped by over 32 degrees there is degradation in the system which is continuing and continuing to lower the flash point. The system will need to be scheduled for an oil change out by the end of summer

Comments: (GCD) 10% Distillation Point is severely low. Visc @ 40°C is severely low. COC Flash Point is abnormally low. (GCD) % < 335°C is marginally high.

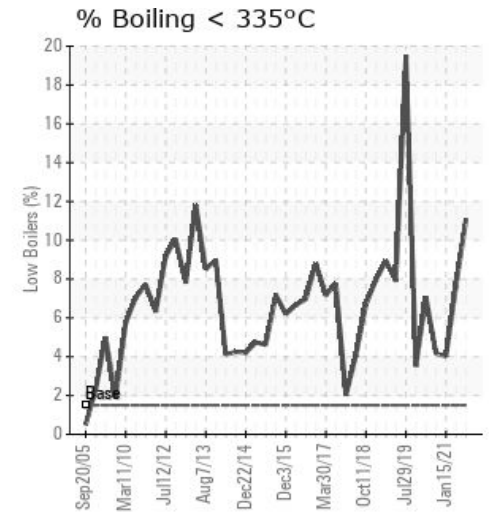
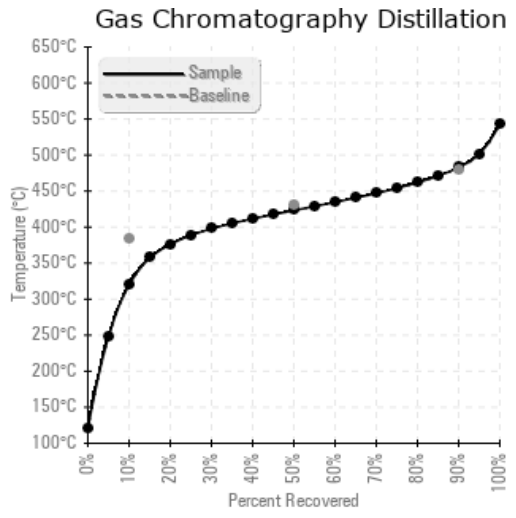
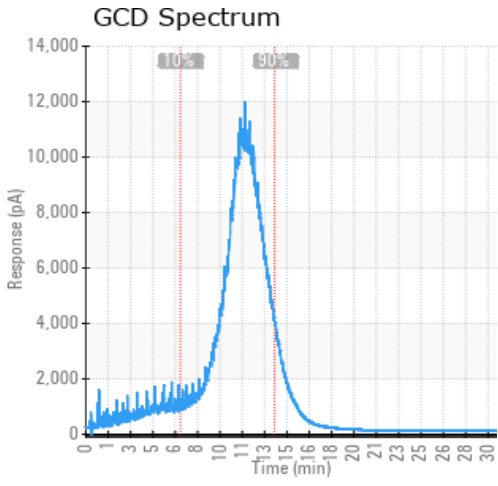
Sample Date	Received Date	Fluid Age	Sample Location	Flash Point (COC)	Water (KF)	Viscosity (40°C)	Acid Number	Solids	GCD 10%	GCD 50%	GCD 90%	GCD % < 335°C
	mm/dd/yy			°F/°C	ppm	cSt	mg/KOH/g	%wt	°F/°C	°F/°C	°F/°C	%
07/23/21	08/04/21	0.0m		363 / 184	9.5	22.1	0.06	0.038	607 / 319	794 / 423	901 / 483	11.10
04/15/21	04/28/21	0.0m	Recirc pump	385 / 196	25.4	29.0	0.44	0.051	664 / 351	787 / 420	901 / 483	7.62
01/15/21	01/26/21	0.0m		352 / 178	5.4	29.0	0.53	0.054	703 / 373	808 / 431	910 / 488	4.02
11/25/20	12/08/20	0.0m	Pump	381 / 194	10.4	29.0	0.54	0.112	702 / 372	809 / 432	910 / 488	4.17
08/25/20	09/03/20	0.0m	FILTER	313 / 156	19.2	27.7	0.36	0.032	667 / 353	803 / 428	909 / 487	7.07
Baseline Data				459 / 237		37.12	0.90		721 / 383	807 / 431	892 / 478	1.5





Sample Date	Iron	Chromium	Nickel	Aluminum	Copper	Lead	Tin	Cadmium	Silver	Vanadium	Silicon	Sodium	Potassium	Titanium	Molybdenum	Antimony	Manganese	Lithium	Boron	Magnesium	Calcium	Barium	Phosphorus	Zinc
07/23/21	16	0	0	0	0	0	0	0	0	0	0	0	0	0	0	0	0	0	0	0	0	0	10	0
04/15/21	28	0	0	0	0	0	0	0	0	0	0	0	0	0	0	0	0	0	0	0	0	0	29	0
01/15/21	0	0	0	0	0	0	0	0	0	0	0	0	0	0	0	0	0	0	0	0	0	0	15	0
11/25/20	5	0	0	0	0	0	0	0	0	0	0	0	0	0	0	0	0	0	0	0	0	0	17	0
08/25/20	20	0	0	0	0	0	0	0	0	0	0	0	1	0	0	0	0	0	0	0	0	0	17	0
Baseline Data			0	0						0			0	0				0	0				230	

Elemental analysis results (above) in parts per million (ppm). [10,000 ppm = 1.0%]



Historical Comments

04/15/21	GCD < 335C is increasing and GCD 10% is decreasing - this points to the development of low boiling components in the heat transfer fluid a sign the fluid is degrading - flash point is low - continue running and we will need to review next oil sample - looks like the oil will continue to degrade and possible oil replacement by the end of summer
01/15/21	Sample continues to run well. Slight drop in flash point but low boilers and viscosity staying consistent so oil is not degrading much. Continue to use oil as normal and resample at next scheduled interval. COC Flash Point is abnormally low.
11/25/20	Flash Point just a little low however within operating limits. all other numbers good and system is okay for continued use, resample at next scheduled interval. COC Flash Point is marginally low.
08/25/20	All major items point to a build up of low boilers. Viscosity dropped 5 cst, flash point dropped 20 deg C, and the GCD <335 increased 3.5%. All other parameters look good. Continue to run until next sample and plan for a possible change at winter shut down. COC Flash Point is severely low.

Petro-Canada makes no representation or warranty of any kind, either express or implied, as to the accuracy or completeness of the analysis and assumes no responsibility and shall have no liability whatsoever with respect to such analysis, or a party's use of it. Petro-Canada is a division of HollyFrontier Corporation.