

[ATHABASCA OIL CORP / 08-28-078-10W4M] L4 (PAD D) LIESMER

Customer: PTRHTF20133
 ATHABASCA OIL CORP.
 LEISMER DEMONSTRATION PLANT
 LSD2-79-10-W4M
 NEAR CONKLIN, AB Canada
 Attn: Ryan Genest
 Tel:
 E-Mail: rgenest@atha.com

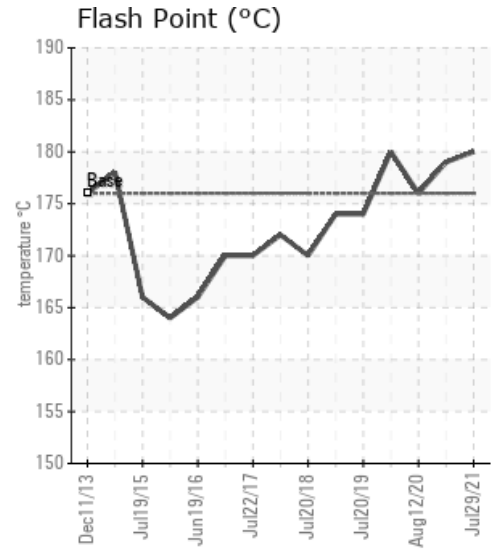
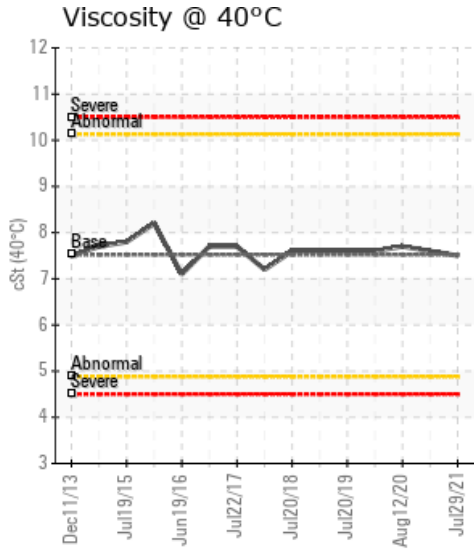
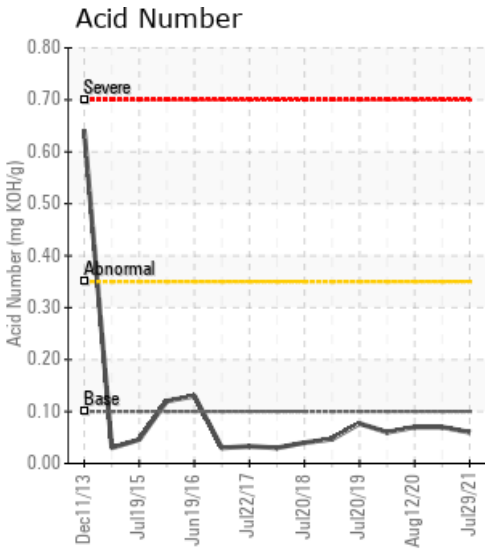
System Information
 System Volume: 8000 ltr
 Bulk Operating Temp: 212F / 100C
 Heating Source:
 Blanket:
 Fluid: PETRO CANADA CALFLO LT
 Make: TORNADO TECHNOLOGIES

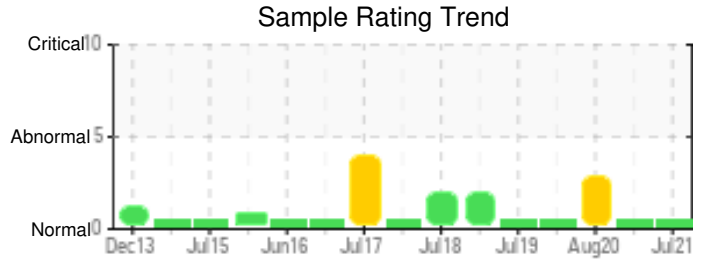
Sample Information
 Lab No: 02437751
 Analyst: Terry Veenstra
 Sample Date: 07/29/21
 Received Date: 08/10/21
 Completed: 08/16/21
 Terry Veenstra
 terry.veenstra@hollyfrontier.com

Recommendation: Fluid is in good condition and is suitable for continued use. Resample in 6 months.

Comments:

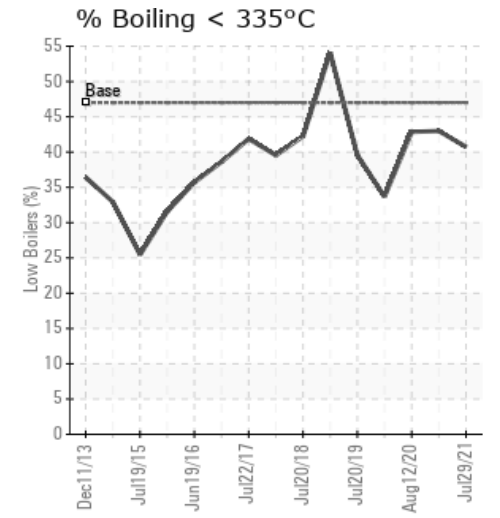
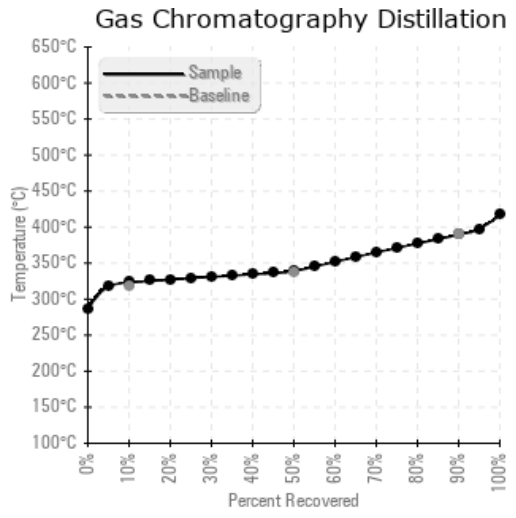
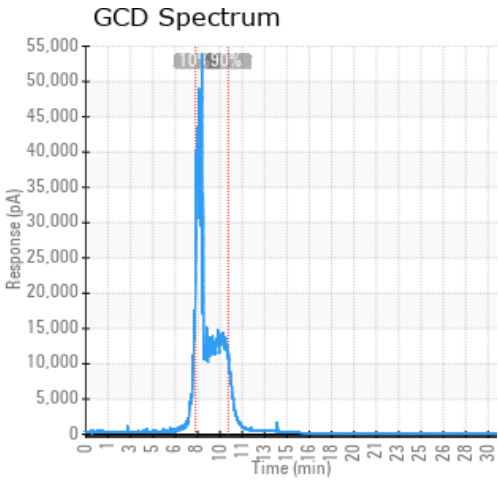
Sample Date	Received Date	Fluid Age	Sample Location	Flash Point (COC)	Water (KF)	Viscosity (40°C)	Acid Number	Solids	GCD 10%	GCD 50%	GCD 90%	GCD % < 335°C
	mm/dd/yy			°F/°C	ppm	cSt	mg/KOH/g	%wt	°F/°C	°F/°C	°F/°C	%
07/29/21	08/10/21	0.0y	pit 12d-0285	356 / 180	10.3	7.5	0.06	0.035	613 / 323	642 / 339	733 / 390	40.73
02/03/21	02/24/21	0.0y	Bott. of tracer tree	354 / 179	25.3	7.6	0.07	0.095	612 / 322	642 / 339	738 / 392	42.98
08/12/20	08/31/20	0.0y	PT0285	349 / 176	7.3	7.7	0.07	0.037	612 / 322	643 / 339	736 / 391	42.85
01/16/20	02/10/20	0.0y	HORM-12D-0008-001	356 / 180	0.00	7.6	0.060	0.032	606 / 319	652 / 345	747 / 397	33.68
07/20/19	08/09/19	0.0y		345 / 174	183.2	7.6	0.077	0.051	610 / 321	643 / 340	735 / 391	39.56
Baseline Data				349 / 176		7.52	0.1		604 / 318	640 / 338	734 / 390	47.0





Sample Date	Iron	Chromium	Nickel	Aluminum	Copper	Lead	Tin	Cadmium	Silver	Vanadium	Silicon	Sodium	Potassium	Titanium	Molybdenum	Antimony	Manganese	Lithium	Boron	Magnesium	Calcium	Barium	Phosphorus	Zinc	
07/29/21	0	0	0	0	0	0	0	0	0	0	0	0	0	0	0	0	0	0	0	0	0	0	93	0	
02/03/21	0	0	0	0	0	0	0	0	0	0	1	0	1	0	0	0	0	0	0	0	0	0	0	87	0
08/12/20	0	0	0	0	0	0	0	0	0	0	0	0	0	0	0	0	0	0	0	0	0	0	0	93	0
01/16/20	0	0	0	0	0	0	0	0	0	0	0	0	0	0	0	0	0	0	0	0	0	0	0	89	0
07/20/19	0	0	0	0	0	0	0	0	0	0	0	0	0	0	0	0	0	0	0	0	0	0	0	91	0
Baseline Data			0	0						0			0	0				0	0					270	

Elemental analysis results (above) in parts per million (ppm). [10,000 ppm = 1.0%]



Historical Comments	
02/03/21	Fluid is in good condition and good for continued use. Resample in 6 months
08/12/20	The presence of metal fines may indicate process pump, mechanical seal, or valve wear. Pipe slag, bits of welding beads, sand, etc. are commonly found: a) in new systems after startup, or b) in older systems that have not been filtered. Insoluble solids measurements in excess of 50mg solids/100ml fluids, and especially in excess of 250mg solids/100ml fluids of particles above 10µm, call for installation of slip-stream filtration in the system where a modest pressure drop is available to filter a low flow slip stream (less than 1% of the main flow rate). This will minimize wear on mechanical components such as pumps and valves. While the sample has shown low or negligible elemental (Wear Metal) results, the system can benefit from early intervention with a low flow, off-line (aka kidney-loop) filtration procedure. Resample after filtration.
01/16/20	Resample at the next scheduled interval. Wear metals are low. Contaminant level low. Fluid is in good condition.
07/20/19	Test results are normal. No immediate action required. Resample at the next interval.

Petro-Canada makes no representation or warranty of any kind, either express or implied, as to the accuracy or completeness of the analysis and assumes no responsibility and shall have no liability whatsoever with respect to such analysis, or a party's use of it. Petro-Canada is a division of HollyFrontier Corporation.