

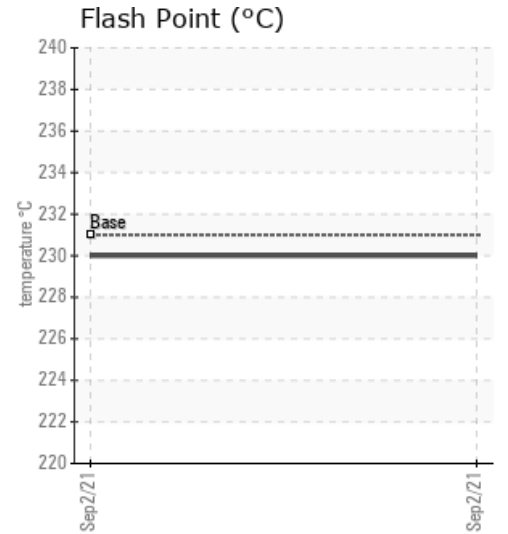
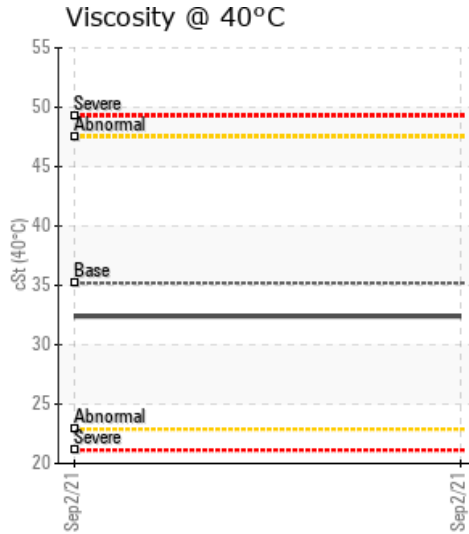
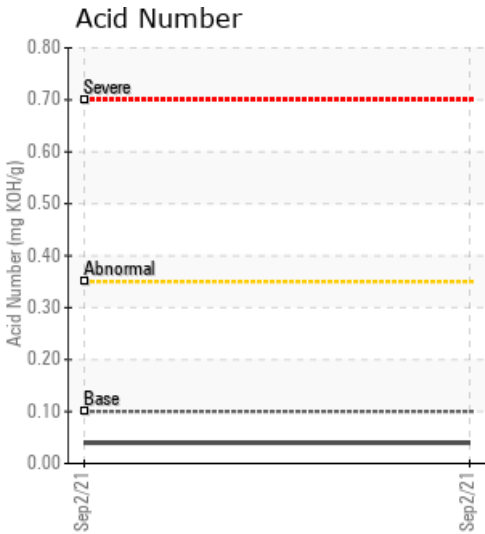
[KEYERA BRAZEAU RIVER GAS PLANT / 3-12-46-14W5] NEW BASE OIL

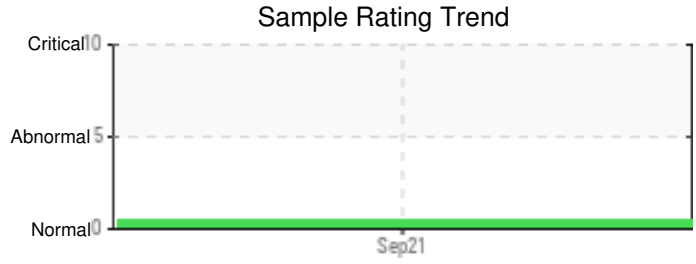
Customer: PTRHTF30084	System Information	Sample Information
Keyera Partnership Brazeau River Ga... Box 7318 Drayton Valley, AB T7A 1S5 Canada Attn: Gareth Buchanan Tel: (780)913-1176 E-Mail: gareth_buchanan@keyera.com	System Volume: 0 ltr Bulk Operating Temp: 428F / 220C Heating Source: Blanket: Fluid: PETRO CANADA CALFLO HTF Make:	Lab No: 02445066 Analyst: Lyle Dach Sample Date: 09/02/21 Received Date: 09/20/21 Completed: 10/12/21 Lyle Dach lyle.dach@HFSinclair.com

Recommendation: This is a baseline read-out on the submitted sample. Base oil sample

Comments: {not applicable} {not applicable} {not applicable}

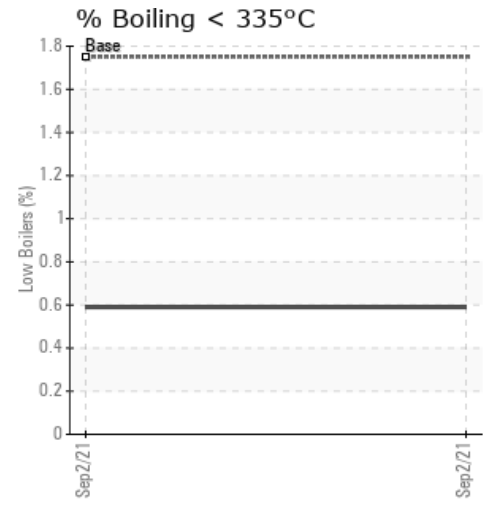
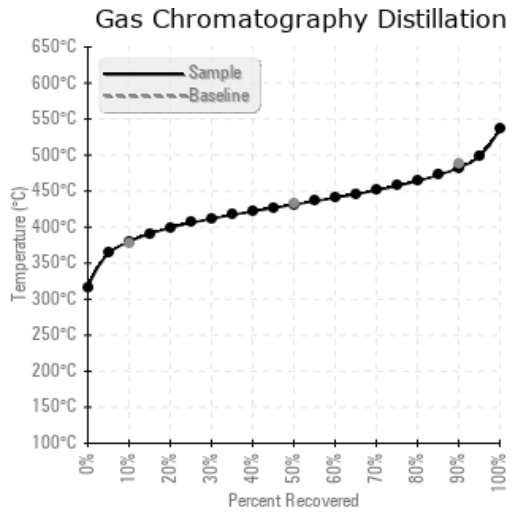
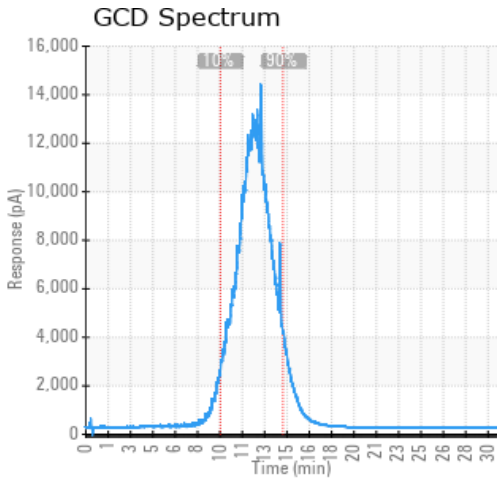
Sample Date	Received Date	Fluid Age	Sample Location	Flash Point (COC)	Water (KF)	Viscosity (40°C)	Acid Number	Solids	GCD 10%	GCD 50%	GCD 90%	GCD % < 335°C
	mm/dd/yy			°F/°C	ppm	cSt	mg/KOH/g	%wt	°F/°C	°F/°C	°F/°C	%
09/02/21	09/20/21	14.0w		446 / 230	2.1	32.4	0.04	0.122	715 / 380	808 / 431	900 / 482	0.59
Baseline Data				448 / 231		35.20	.1		712 / 378	810 / 432	910 / 488	1.75





Sample Date	Iron	Chromium	Nickel	Aluminum	Copper	Lead	Tin	Cadmium	Silver	Vanadium	Silicon	Sodium	Potassium	Titanium	Molybdenum	Antimony	Manganese	Lithium	Boron	Magnesium	Calcium	Barium	Phosphorus	Zinc	
09/02/21	0	0	0	0	0	0	0	0	0	0	4	0	0	0	0	0	0	0	0	0	0	0	0	288	1
Baseline Data			0	0						0			0	0				0	0					280	

Elemental analysis results (above) in parts per million (ppm). [10,000 ppm = 1.0%]



Historical Comments

Petro-Canada makes no representation or warranty of any kind, either express or implied, as to the accuracy or completeness of the analysis and assumes no responsibility and shall have no liability whatsoever with respect to such analysis, or a party's use of it. Petro-Canada is a division of HollyFrontier Corporation.