

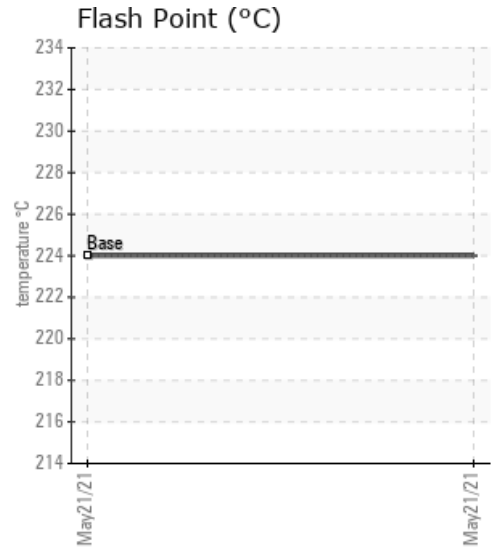
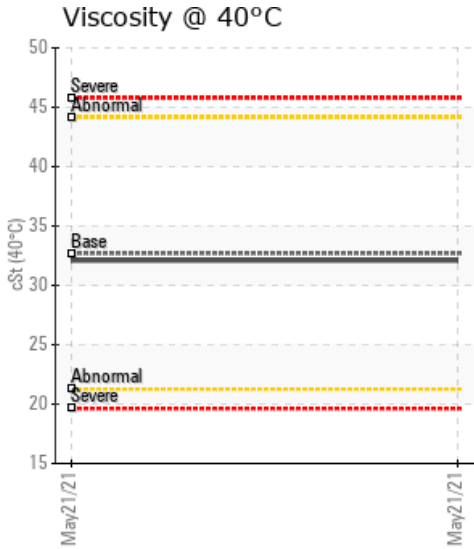
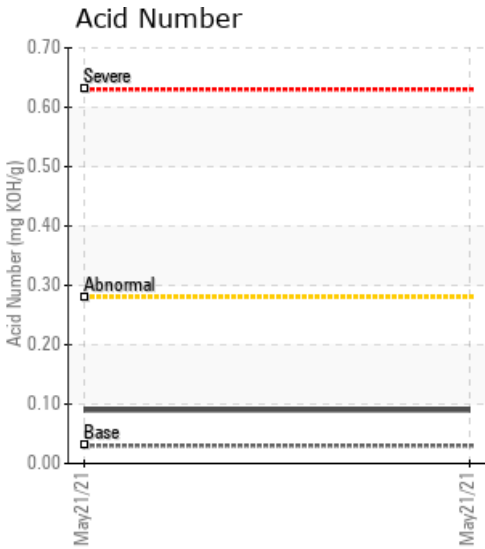
B04D031/B04HOU31

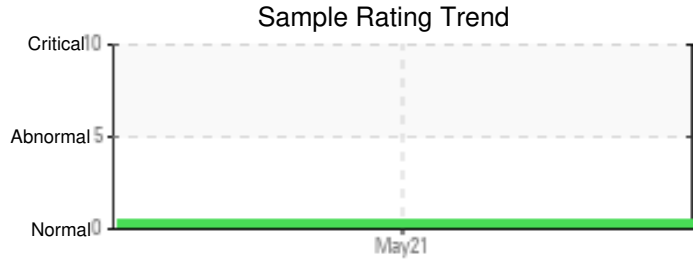
Customer: PTRHTF10011	System Information	Sample Information
G.F.S. CHEMICAL 851 Mckinley Avenue COLUMBUS, OH 43222 USA Attn: Jamie Walters Tel: (800)446-4910 E-Mail: jamie@gfschemicals.com	System Volume: 50 gal Bulk Operating Temp: 350F / 177C Heating Source: Blanket: Fluid: PETRO CANADA CALFLO AF Make: HEAT INC	Lab No: 02448261 Analyst: Joe Goecke Sample Date: 05/21/21 Received Date: 10/05/21 Completed: 10/06/21 Joe Goecke joe.goecke@hollyfrontier.com

Recommendation: Sample looks great. No issues. Continue to use and resample at next scheduled interval.

Comments:

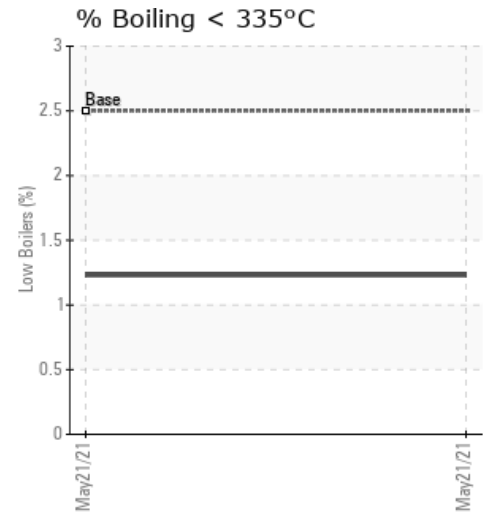
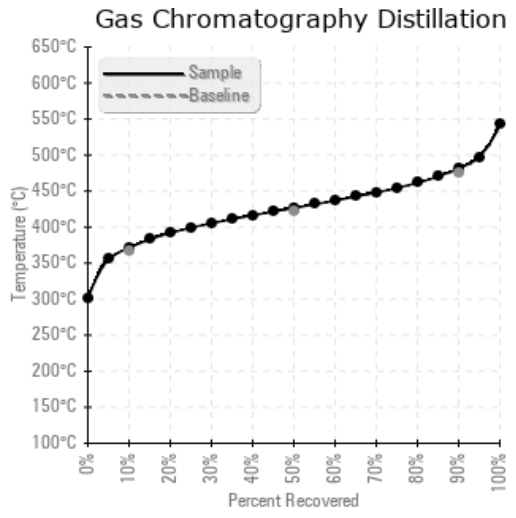
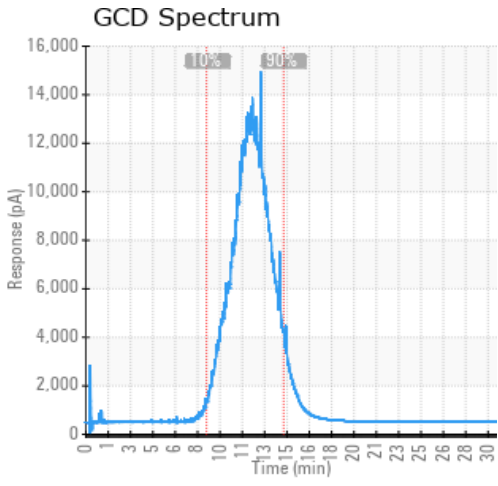
Sample Date	Received Date	Fluid Age	Sample Location	Flash Point (COC)	Water (KF)	Viscosity (40°C)	Acid Number	Solids	GCD 10%	GCD 50%	GCD 90%	GCD % < 335°C
	mm/dd/yy			°F/°C	ppm	cSt	mg/KOH/g	%wt	°F/°C	°F/°C	°F/°C	%
05/21/21	10/05/21	3.0y		435 / 224	187.8	32.1	0.09	0.069	700 / 371	800 / 427	899 / 481	1.23
Baseline Data				435 / 224		32.7	0.03		693 / 367	790 / 421	887 / 475	2.5





Sample Date	Iron	Chromium	Nickel	Aluminum	Copper	Lead	Tin	Cadmium	Silver	Vanadium	Silicon	Sodium	Potassium	Titanium	Molybdenum	Antimony	Manganese	Lithium	Boron	Magnesium	Calcium	Barium	Phosphorus	Zinc
05/21/21	2	0	0	0	0	0	0	0	0	0	8	0	0	0	0	0	0	0	0	0	0	0	276	2
Baseline Data			0	0						0			0	0					0				270	

Elemental analysis results (above) in parts per million (ppm). [10,000 ppm = 1.0%]



Historical Comments

Petro-Canada makes no representation or warranty of any kind, either express or implied, as to the accuracy or completeness of the analysis and assumes no responsibility and shall have no liability whatsoever with respect to such analysis, or a party's use of it. Petro-Canada is a division of HollyFrontier Corporation.