

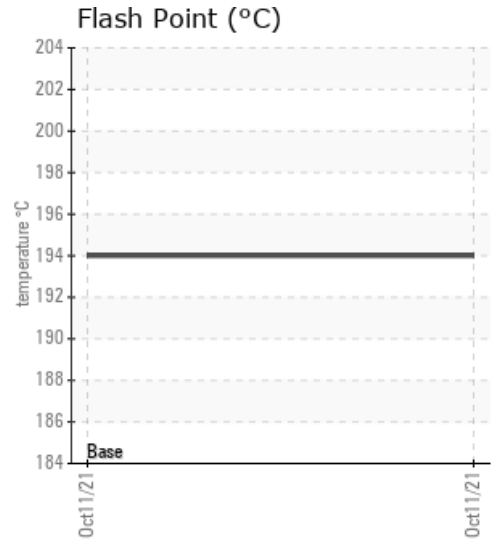
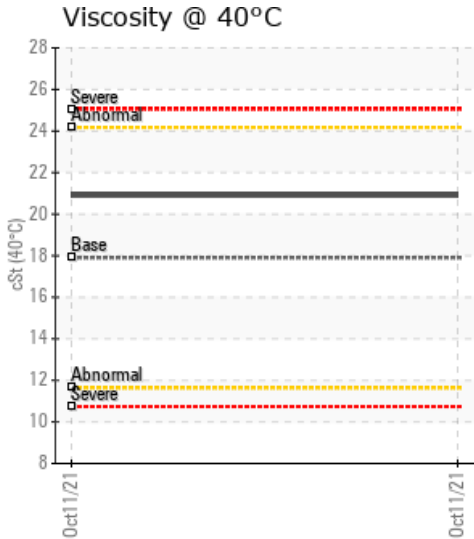
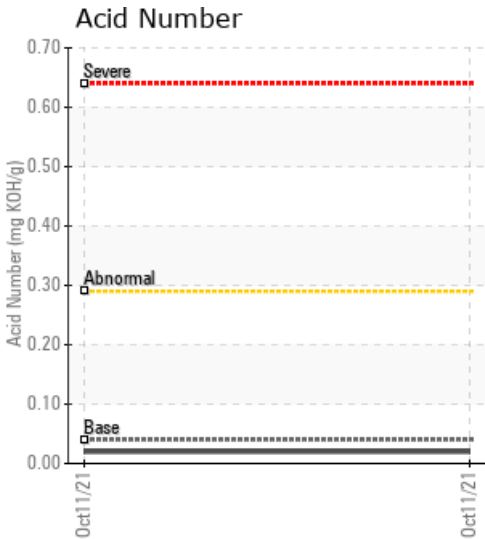
MATT SIFFORD/SUGAR CREE

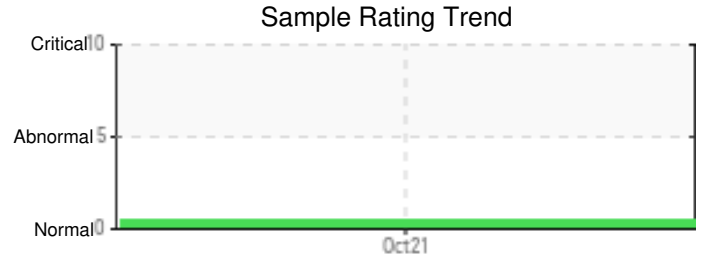
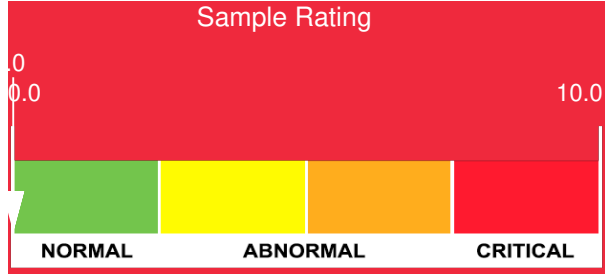
Customer: PTRHTF10250	System Information	Sample Information
THOMAS OIL CO 3070 RJ PARKWAY FRANKLIN, IN 46131 USA Attn: LARRY DAVIS Tel: (317)379-4102 E-Mail: larry.davis@tocinc.com	System Volume: 5000 gal Bulk Operating Temp: 550F / 288C Heating Source: Blanket: Fluid: PARATHERM NF Make: FULTON	Lab No: 02454261 Analyst: Yvette Trzcinski Sample Date: 10/11/21 Received Date: 11/05/21 Completed: 11/09/21 Yvette Trzcinski yvette.trzcinski@hollyfrontier.com

Recommendation: The viscosity, Acid number, Flash point and GCD distillation temperatures are all within specification and there is very little insolubles the fluid is acceptable for further use continue utilizing the fluid and resample within 9-12 months

Comments:

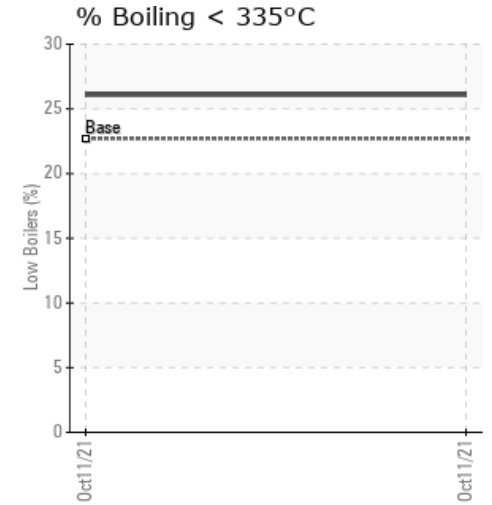
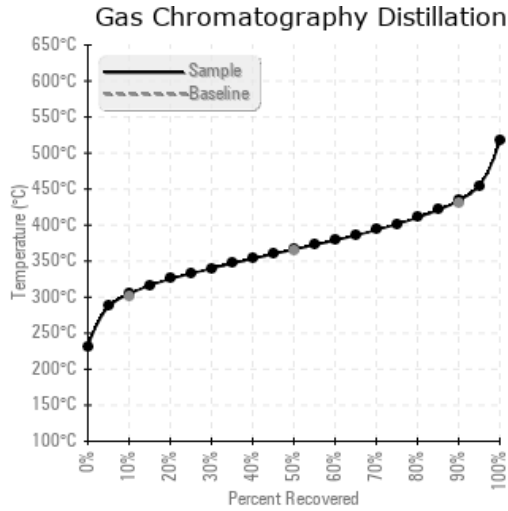
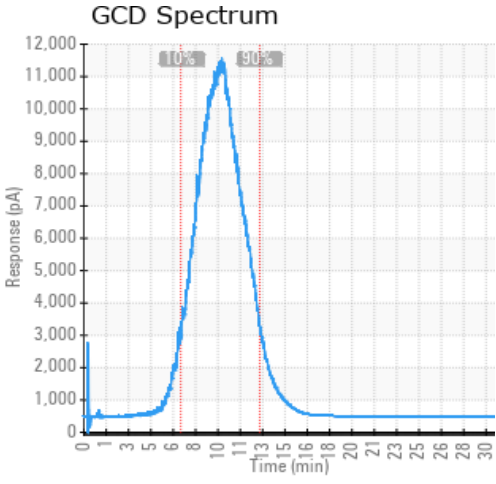
Sample Date	Received Date	Fluid Age	Sample Location	Flash Point (COC)	Water (KF)	Viscosity (40°C)	Acid Number	Solids	GCD 10%	GCD 50%	GCD 90%	GCD % < 335°C
	mm/dd/yy			°F/°C	ppm	cSt	mg/KOH/g	%wt	°F/°C	°F/°C	°F/°C	%
10/11/21	11/05/21	6.0m	Transfer pump	381 / 194	15.9	20.9	0.02	0.090	580 / 304	691 / 366	813 / 434	26.09
Baseline Data				342 / 172		17.9	0.04		572 / 300	689 / 365	808 / 431	22.7





Sample Date	Iron	Chromium	Nickel	Aluminum	Copper	Lead	Tin	Cadmium	Silver	Vanadium	Silicon	Sodium	Potassium	Titanium	Molybdenum	Antimony	Manganese	Lithium	Boron	Magnesium	Calcium	Barium	Phosphorus	Zinc
10/11/21	18	0	0	0	0	0	0	0	0	0	0	0	0	0	0	0	0	0	0	0	0	0	0	0
Baseline Data			0	0						0			0	0					0				0	

Elemental analysis results (above) in parts per million (ppm). [10,000 ppm = 1.0%]



Historical Comments

Petro-Canada makes no representation or warranty of any kind, either express or implied, as to the accuracy or completeness of the analysis and assumes no responsibility and shall have no liability whatsoever with respect to such analysis, or a party's use of it. Petro-Canada is a division of HollyFrontier Corporation.