

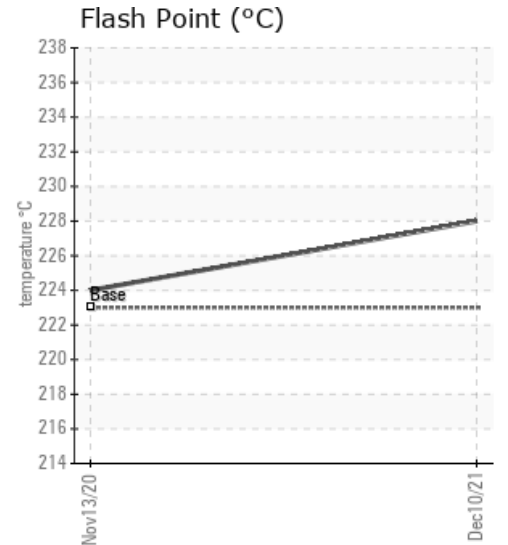
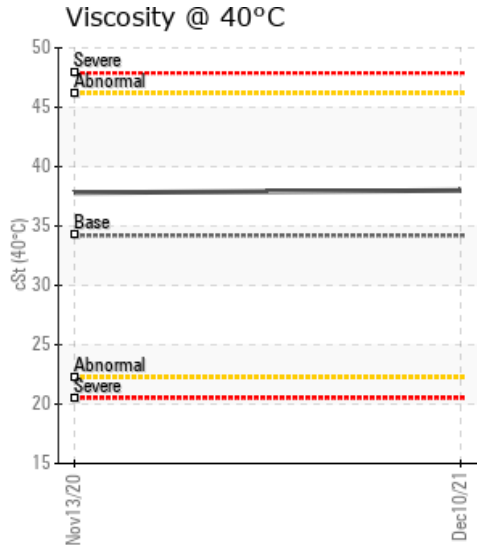
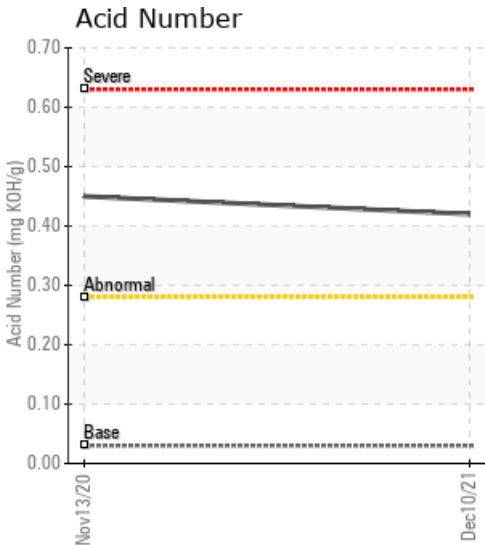
## PULASKI PLANT

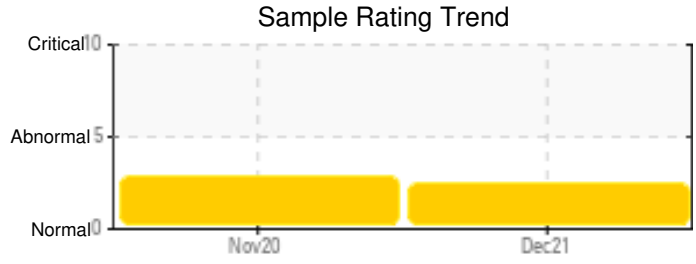
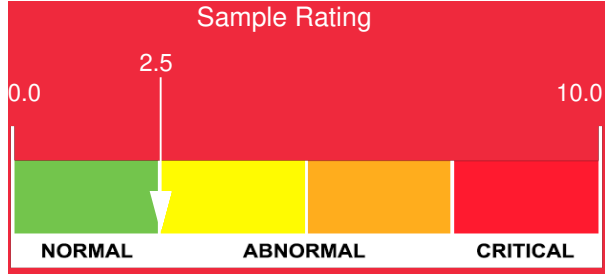
Customer: PTRHTF10238	System Information	Sample Information
Reliable Asphalt Corp 3741 S Pulaski Rd Chicago, IL 60623 USA Attn: Bob Madden Tel: E-Mail: rmadden@biganepaving.com	System Volume: 600 ltr Bulk Operating Temp: 350F / 177C Heating Source: Blanket: Fluid: PETRO CANADA PETRO-THERM Make: STAN STEEL	Lab No: 02463464 Analyst: Yvette Trzcinski Sample Date: 12/10/21 Received Date: 12/21/21 Completed: 01/03/22 Yvette Trzcinski yvette.trzcinski@hollyfrontier.com

Recommendation: There is some oxidation happening that has caused an increase in acid number, viscosity and GCD 90% over new oil but the sample is consistent and similar to the last sample taken in 2020. System is acceptable for continued use resample at the next interval

Comments: Acid Number (AN) is abnormally high. (GCD) 90% Distillation Point is marginally high.

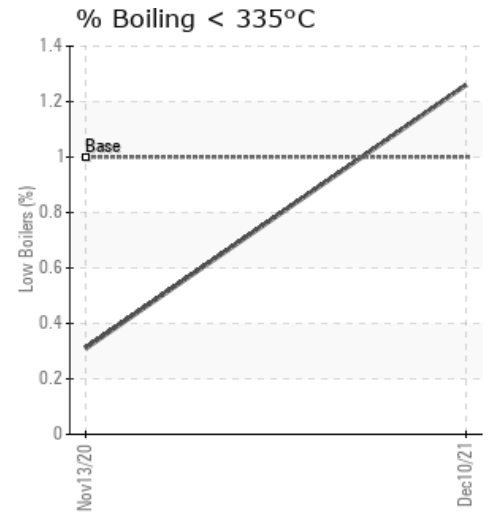
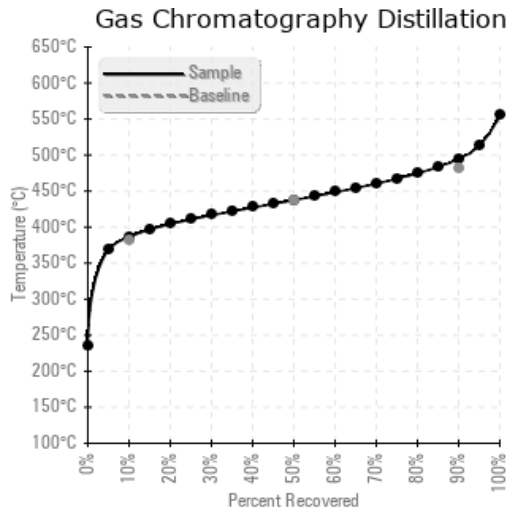
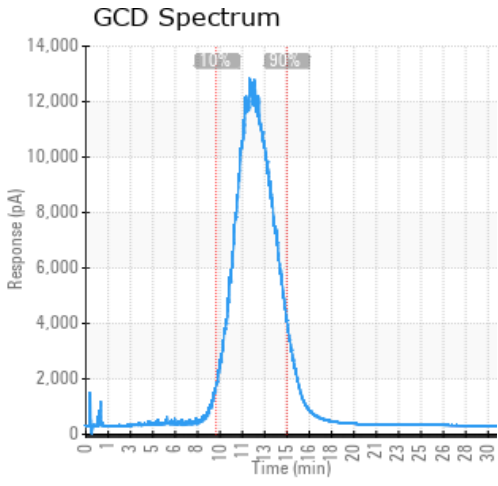
Sample Date	Received Date	Fluid Age	Sample Location	Flash Point (COC)	Water (KF)	Viscosity (40°C)	Acid Number	Solids	GCD 10%	GCD 50%	GCD 90%	GCD % < 335°C
	mm/dd/yy			°F/°C	ppm	cSt	mg/KOH/g	%wt	°F/°C	°F/°C	°F/°C	%
12/10/21	12/21/21	5.0y		442 / 228	31.2	38.0	0.42	0.221	727 / 386	819 / 437	922 / 495	1.26
11/13/20	11/24/20	2.0y	BOILER	435 / 224	52.4	37.8	0.45	0.403	731 / 388	820 / 438	923 / 495	0.31
Baseline Data				433 / 223		34.2	0.03		720 / 382	817 / 436	900 / 482	1.00





Sample Date	Iron	Chromium	Nickel	Aluminum	Copper	Lead	Tin	Cadmium	Silver	Vanadium	Silicon	Sodium	Potassium	Titanium	Molybdenum	Antimony	Manganese	Lithium	Boron	Magnesium	Calcium	Barium	Phosphorus	Zinc
12/10/21	2	0	0	0	0	0	0	0	0	0	0	0	0	0	0	0	0	0	0	2	4	0	2	3
11/13/20	2	0	0	0	1	0	0	0	0	0	2	0	0	0	0	0	0	0	0	2	4	0	0	2
Baseline Data			0	0						0			0	0					0				0	

Elemental analysis results (above) in parts per million (ppm). [10,000 ppm = 1.0%]



## Historical Comments

11/13/20	The fluid is showing signs of degradation the acid number is increasing as well as the pentane insoluble both signs the fluid is oxidizing forming acidic compounds and deposits that will continue to degrade the fluid and cause fouling build up in the system which affects the efficiency of the system. Recommend drain and flush to remove solids and recharge of the system with new fluid within the next 12 -18 months Pentane Insolubles levels are abnormally high. Acid Number (AN) is abnormally high. (GCD) 90% Distillation Point is marginally high.

Petro-Canada makes no representation or warranty of any kind, either express or implied, as to the accuracy or completeness of the analysis and assumes no responsibility and shall have no liability whatsoever with respect to such analysis, or a party's use of it. Petro-Canada is a division of HollyFrontier Corporation.