

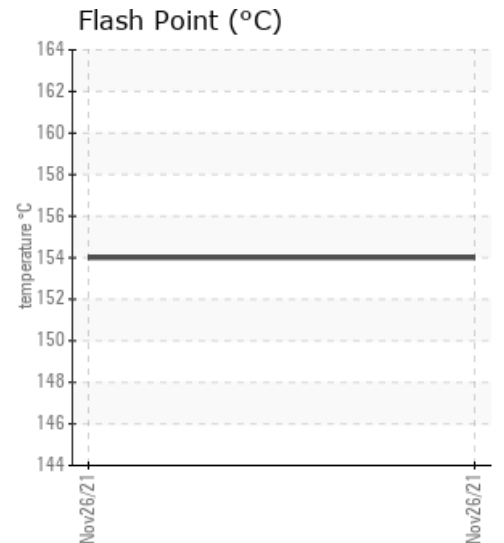
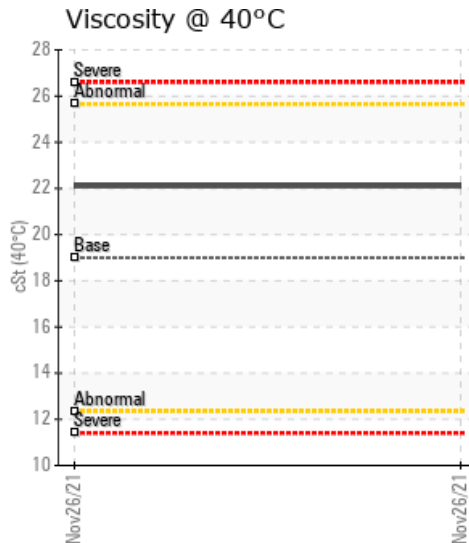
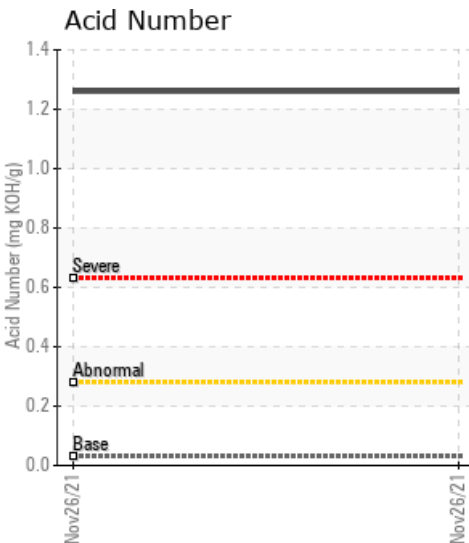
AJPLAST.CO.TH NO 5

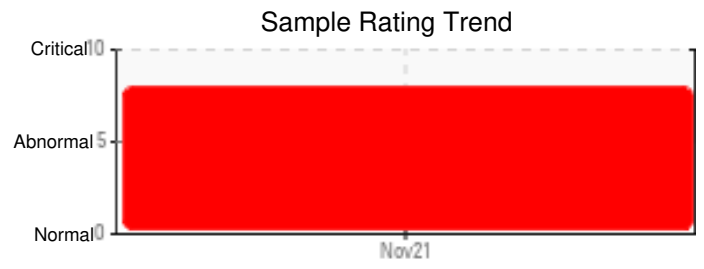
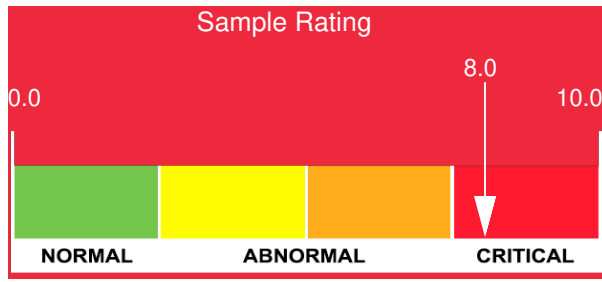
Customer: PTRHTF60010	System Information	Sample Information
SYNLUBE INTERNATIONAL CO LTD 76/1 MOO.7 THACHIN MUANG SAMUTSAKHON, 74000 THAILAND Attn: CHERNPORN CHOBKUI Tel: 034421290 E-Mail: chernporn@synlube.co.th	System Volume: 30000 ltr Bulk Operating Temp: 500F / 260C Heating Source: Blanket: Fluid: EASTMAN THERMINOL 55 Make: HOVEL	Lab No: 02463468 Analyst: Philip Riley Sample Date: 11/26/21 Received Date: 12/21/21 Completed: 01/04/22 Philip Riley philip.riley@hollyfrontier.com

Recommendation: *** NOTE: The high level of water present in the sample skews the SimDist (GCD) data significantly ***Product in extremely poor condition and system needs both changing and attention/inspection. Water contamination is extremely high which will distort other parameters. Need to find source of the water contamination and address this issue. Product to be removed and clean and flush done, replacing with Petro-Canada CALFLO AF.

Comments: Water contamination levels are severely high. Water contamination levels are severely high.. ppm Water contamination levels are severely high. Pentane Insolubles levels are severely high. (GCD) % < 335°C is severely high. Acid Number (AN) is severely high. (GCD) 10% Distillation Point is severely low. (GCD) 90% Distillation Point is marginally high.

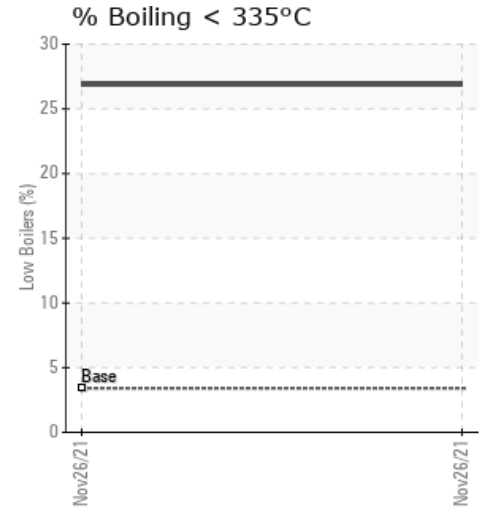
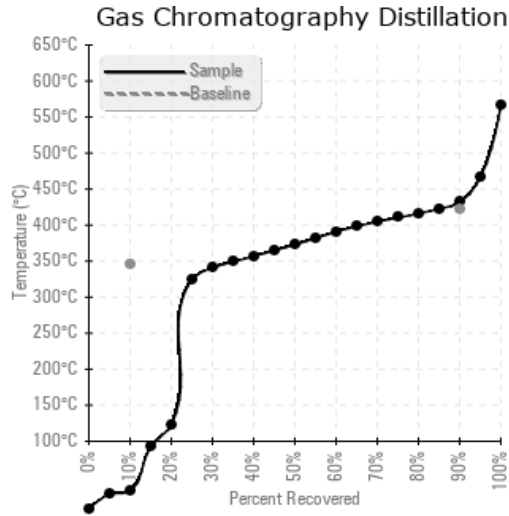
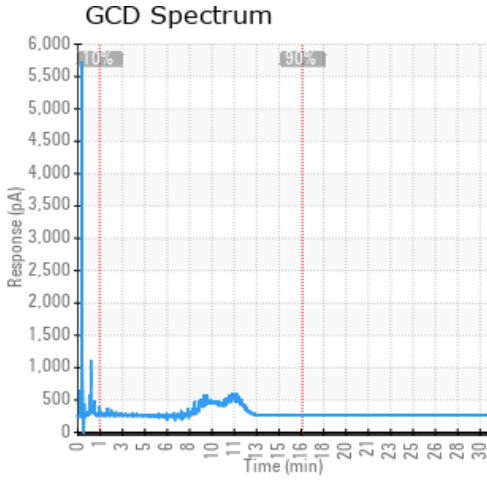
Sample Date	Received Date	Fluid Age	Sample Location	Flash Point (COC)	Water (KF)	Viscosity (40°C)	Acid Number	Solids	GCD 10%	GCD 50%	GCD 90%	GCD % < 335°C
	mm/dd/yy			°F/°C	ppm	cSt	mg/KOH/g	%wt	°F/°C	°F/°C	°F/°C	%
11/26/21	12/21/21	10.0y		309 / 154	2034249	22.1	1.26	1.21	87 / 30	703 / 373	809 / 431	26.88
Baseline Data				349 / 176		19.0	0.03		655 / 346		790 / 421	3.40





Sample Date	Iron	Chromium	Nickel	Aluminum	Copper	Lead	Tin	Cadmium	Silver	Vanadium	Silicon	Sodium	Potassium	Titanium	Molybdenum	Antimony	Manganese	Lithium	Boron	Magnesium	Calcium	Barium	Phosphorus	Zinc
11/26/21	140	0	0	0	0	0	0	0	0	0	0	0	0	0	0	0	0	0	4	0	1	0	0	2
Baseline Data			0	0						0			0	0					0				0	

Elemental analysis results (above) in parts per million (ppm). [10,000 ppm = 1.0%]



Historical Comments

Petro-Canada makes no representation or warranty of any kind, either express or implied, as to the accuracy or completeness of the analysis and assumes no responsibility and shall have no liability whatsoever with respect to such analysis, or a party's use of it. Petro-Canada is a division of HollyFrontier Corporation.