

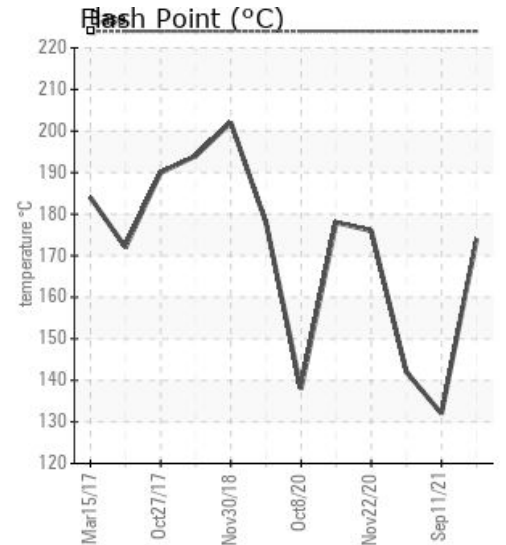
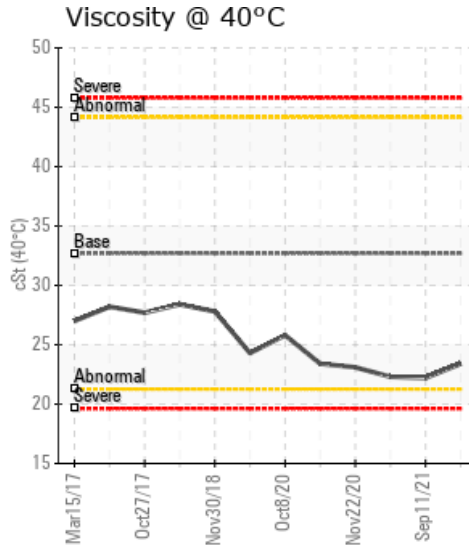
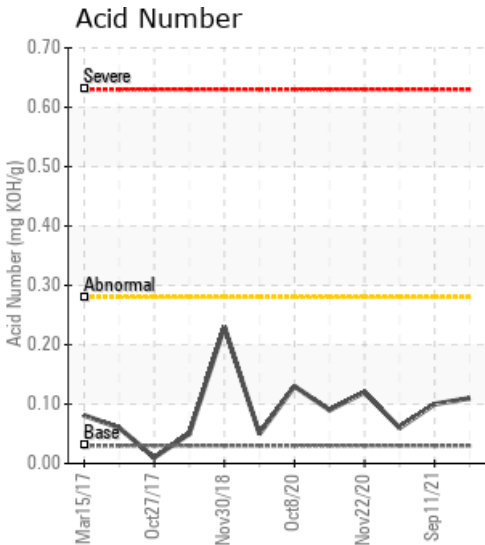
## TFS H/O SYSTEM #1

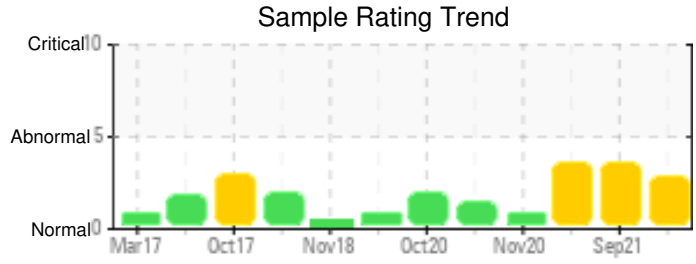
Customer: PTRHTF10176	System Information	Sample Information
CERTAINEED ROOFING 100 CERTAINEED DR JONESBURG, MO 63351 US Attn: Jeff Montgomery Tel: (952)261-9532 E-Mail: jeffrey.d.montgomery@saint-gobain.com	System Volume: 4462 gal Bulk Operating Temp: 553F / 289C Heating Source: Blanket: Fluid: PETRO CANADA CALFLO AF Make: FSE	Lab No: 02466163 Analyst: Neil Buchanan Sample Date: 01/04/22 Received Date: 01/13/22 Completed: 01/17/22 Neil Buchanan neil.buchanan@HFSinclair.com

Recommendation: Flash Point is marginally low and this is expected from the GCD results, GCD < 335C and graph, which shows the formation of some low boilers.

Comments: COC Flash Point is abnormally low. (GCD) % < 335°C is marginally high.

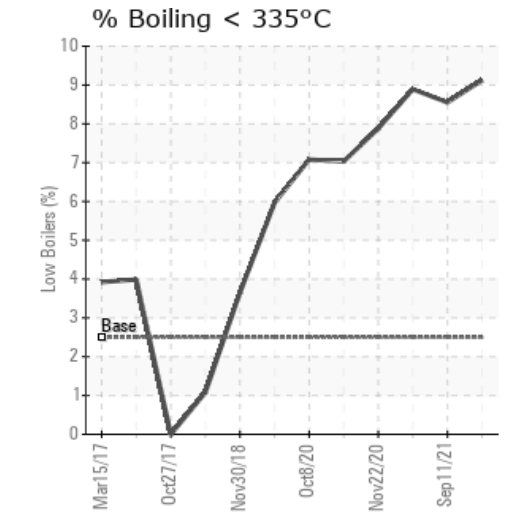
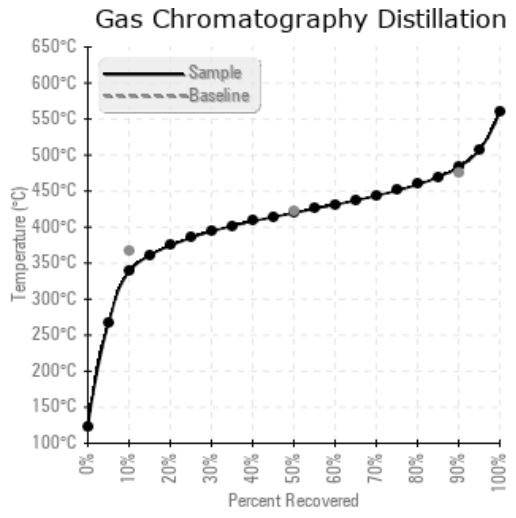
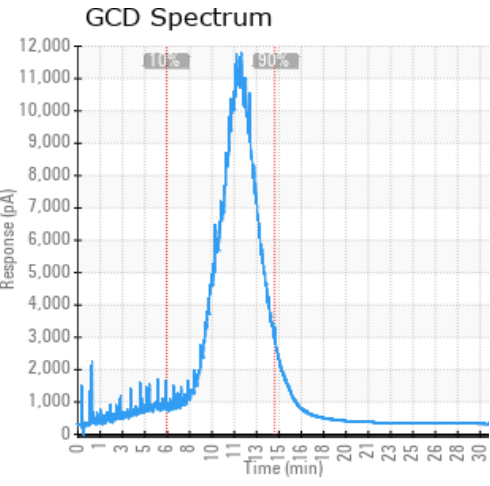
Sample Date	Received Date	Fluid Age	Sample Location	Flash Point (COC)	Water (KF)	Viscosity (40°C)	Acid Number	Solids	GCD 10%	GCD 50%	GCD 90%	GCD % < 335°C
	mm/dd/yy			°F/°C	ppm	cSt	mg/KOH/g	%wt	°F/°C	°F/°C	°F/°C	%
01/04/22	01/13/22	0.0y		345 / 174	14.9	23.4	0.11	0.145	641 / 338	787 / 420	901 / 483	9.12
09/11/21	11/22/21	5.0y	Side stream	270 / 132	36.9	22.2	0.10	0.033	647 / 342	788 / 420	899 / 482	8.55
08/30/21	09/07/21	4.0y	MAIN PUMP STRAINER	288 / 142	10.7	22.3	0.06	0.059	644 / 340	789 / 421	902 / 483	8.89
11/22/20	01/04/21	0.0y	Strainer	349 / 176	30.2	23.1	0.12	0.044	655 / 346	790 / 421	900 / 482	7.88
11/02/20	11/06/20	0.0y	Side Stream	352 / 178	11.0	23.4	0.09	0.090	665 / 352	792 / 422	901 / 483	7.03
Baseline Data				435 / 224		32.7	0.03		693 / 367	790 / 421	887 / 475	2.5





Sample Date	Iron	Chromium	Nickel	Aluminum	Copper	Lead	Tin	Cadmium	Silver	Vanadium	Silicon	Sodium	Potassium	Titanium	Molybdenum	Antimony	Manganese	Lithium	Boron	Magnesium	Calcium	Barium	Phosphorus	Zinc
01/04/22	9	0	0	0	0	0	0	0	0	0	0	0	0	0	0	0	0	0	0	0	0	0	65	0
09/11/21	0	0	0	0	0	0	0	0	0	0	0	0	0	0	0	0	0	0	0	0	0	0	54	0
08/30/21	0	0	0	0	0	0	0	0	0	0	0	0	0	0	0	0	0	0	0	0	0	0	61	0
11/22/20	1	0	0	0	0	0	0	0	0	0	0	0	0	0	0	0	0	0	0	0	0	0	75	0
11/02/20	2	0	0	0	0	0	0	0	0	0	0	0	0	0	0	0	0	0	0	0	0	0	79	0
Baseline Data			0	0						0			0	0					0				270	

Elemental analysis results (above) in parts per million (ppm). [10,000 ppm = 1.0%]



Historical Comments	
09/11/21	Flash point is severely low. GCD confirms the presence of low boilers which will lower flash point. System should be safely vented. COC Flash Point is severely low. (GCD) % < 335°C is marginally high.
08/30/21	COC Flash Point is severely low. GCD indicates the formation of low boiling point hydrocarbons. System should be safely vented. COC Flash Point is severely low. (GCD) % < 335°C is marginally high.
11/22/20	Sample date needs to be corrected to 12/22/20 from 11/22/20. Sample shows no significant change from last sample. A very slight increase in light ends and minor changes in viscosity and flash point. Continue to operate as normal and look to plan a venting of light ends in next quarter. Resample as scheduled. COC Flash Point is abnormally low.
11/02/20	Not much change in the light ends, but we did see a significant increase in flash point of 40 deg C. Viscosity dropped another 2 centistokes. Since the flash point has increased and we had a slight change in low boilers, I suggest continuing to run and resample next quarter with plans to change in next 90-180 days depending on next results. COC Flash Point is abnormally low.

Petro-Canada makes no representation or warranty of any kind, either express or implied, as to the accuracy or completeness of the analysis and assumes no responsibility and shall have no liability whatsoever with respect to such analysis, or a party's use of it. Petro-Canada is a division of HollyFrontier Corporation.