

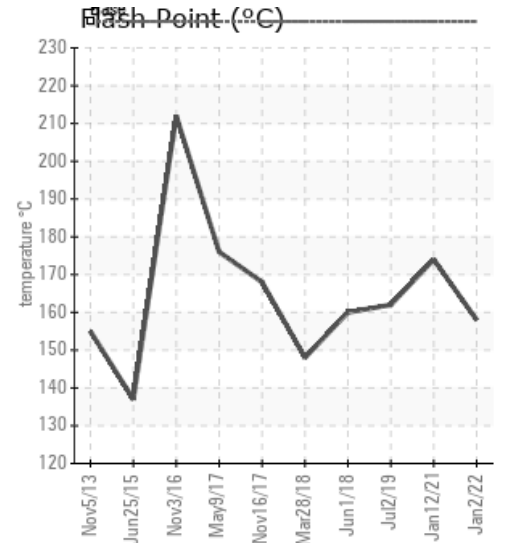
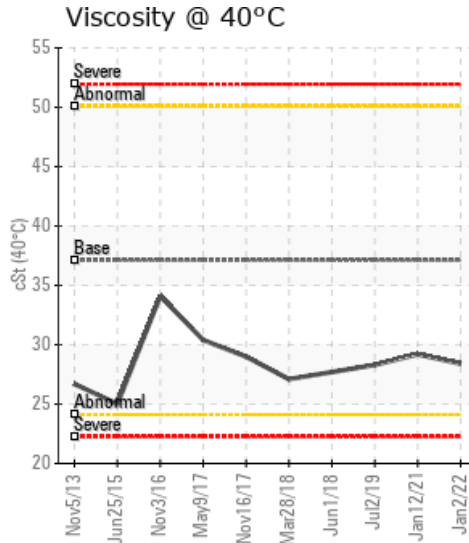
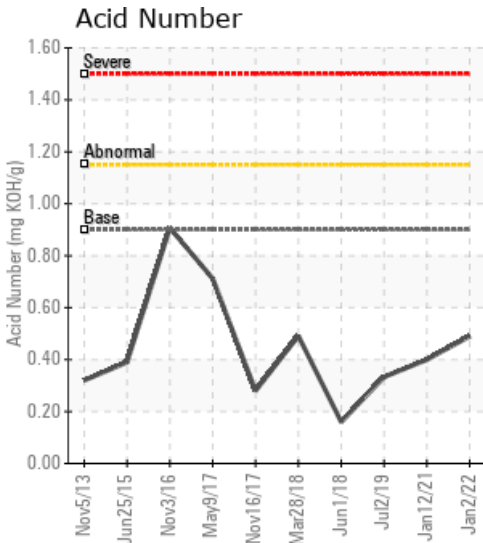
## TPC 800 LNE

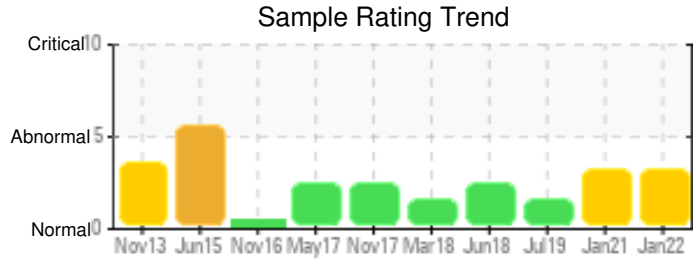
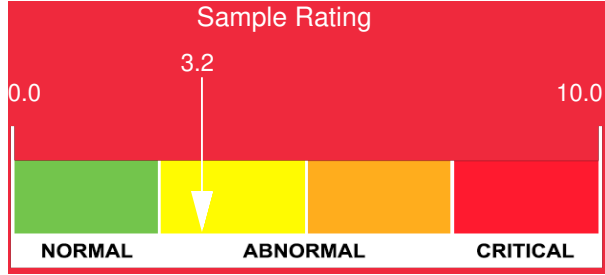
Customer: PTRHTF40011	System Information	Sample Information
ENKCO FOODGROUP BV WAAGWEG 5 OVERIJSEL HOLTEN, OVE NETHERLANDS Attn: Maintenance Manager Tel: E-Mail:	System Volume: 2500 ltr Bulk Operating Temp: 545F / 285C Heating Source: Blanket: Fluid: PETRO CANADA PURITY FG HEAT TRANSFER FLUID Make: WANSON	Lab No: 02470766 Analyst: Bill Quesnel CLS, OMA II, MLA-III, LLA-I Sample Date: 01/02/22 Received Date: 02/08/22 Completed: 02/09/22 Bill Quesnel CLS, OMA II, MLA-III, LLA-I

Recommendation: COC Flash Point is lower than the previous sample. Recommend to vent off the system (safely) and see if the flash point can be raised. If not consider changing the oil.

Comments: Iron ppm levels are abnormal possibly as the result of some corrosion present in the system. COC Flash Point is severely low. (GCD) 90% Distillation Point is marginally high.

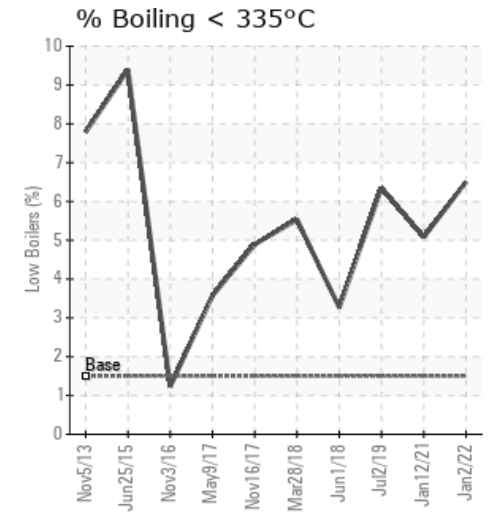
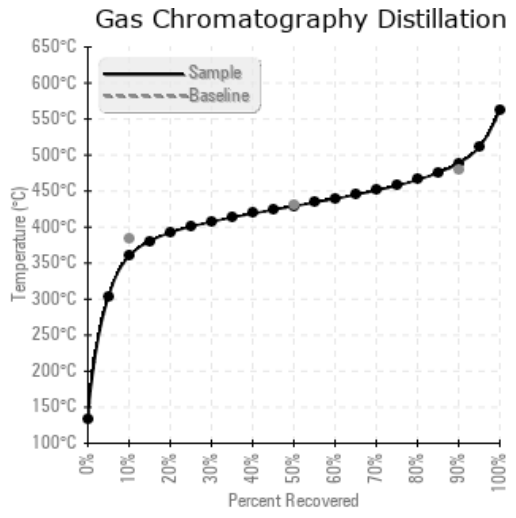
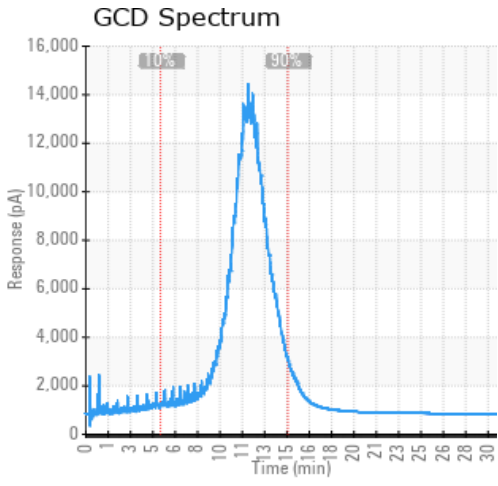
Sample Date	Received Date	Fluid Age	Sample Location	Flash Point (COC)	Water (KF)	Viscosity (40°C)	Acid Number	Solids	GCD 10%	GCD 50%	GCD 90%	GCD % < 335°C
	mm/dd/yy			°F/°C	ppm	cSt	mg/KOH/g	%wt	°F/°C	°F/°C	°F/°C	%
01/02/22	02/08/22	5.3y		316 / 158	49.2	28.4	0.49	0.344	680 / 360	804 / 429	911 / 488	6.50
01/12/21	01/18/21	4.3y		345 / 174	66.8	29.2	0.40	0.616	696 / 369	807 / 430	913 / 489	5.08
07/02/19	07/09/19	2.8y		324 / 162	54.6	28.3	0.333	0.361	677 / 358	800 / 426	910 / 488	6.35
06/01/18	06/08/18	1.8y		320 / 160	18.9	27.7	0.16	0.173	686 / 363	778 / 414	858 / 459	3.27
03/28/18	04/09/18	1.3y		298 / 148	16.0	27.1	0.491	0.199	686 / 363	799 / 426	895 / 480	5.53
Baseline Data				459 / 237		37.12	0.90		721 / 383	807 / 431	892 / 478	1.5





Sample Date	Iron	Chromium	Nickel	Aluminum	Copper	Lead	Tin	Cadmium	Silver	Vanadium	Silicon	Sodium	Potassium	Titanium	Molybdenum	Antimony	Manganese	Lithium	Boron	Magnesium	Calcium	Barium	Phosphorus	Zinc	
01/02/22	266	1	0	0	3	0	0	0	0	0	4	0	0	0	0	0	2	0	1	0	1	0	66	1	
01/12/21	151	0	0	0	4	0	0	0	0	0	2	0	0	0	0	0	2	0	0	0	0	0	0	49	0
07/02/19	89	0	0	0	4	0	0	0	0	0	1	0	0	0	0	0	0	0	0	0	0	0	0	29	0
06/01/18	55	0	0	0	2	0	0	0	0	0	0	0	0	0	0	0	0	0	0	0	0	0	0	23	0
03/28/18	36	0	0	0	13	0	0	0	0	0	1	0	0	0	0	0	0	0	0	0	0	0	0	35	0
Baseline Data			0	0						0			0	0				0	0					230	

Elemental analysis results (above) in parts per million (ppm). [10,000 ppm = 1.0%]



Historical Comments	
01/12/21	COC Flash Point low but GCD % 335 °C abd GCD 10% still ok. Recommend to vent off the system (safely) and see if the flash point can be raised. If not consider changing the oil. Pentane Insolubles levels are severely high. COC Flash Point is severely low. (GCD) 90% Distillation Point is marginally high.
07/02/19	COC Flash Point low. GCD backs up by showing high presence of light end materials. Recommend to vent off the system (safely) and see if the flash point can be raised. If not consider changing the oil. COC Flash Point is severely low. (GCD) 90% Distillation Point is abnormally low.
06/01/18	COC Flash Point very low indeed. GCD backs up by showing high presence of light end materials. Recommend an oil change but if not possible then recommend to vent off the system (safely) and see if the flash point can be raised. This may have been done as it has improved from last sample. I would re-sample following venting to check COC Flash Point is severely low. (GCD) 90% Distillation Point is abnormally low.
03/28/18	Recommend Fluid change, flush and refill based on the flash point that has progressively reduced sample after sample. GCD backs up presence of a wide range of lower weight molecules COC Flash Point is severely low.

Petro-Canada makes no representation or warranty of any kind, either express or implied, as to the accuracy or completeness of the analysis and assumes no responsibility and shall have no liability whatsoever with respect to such analysis, or a party's use of it. Petro-Canada is a division of HollyFrontier Corporation.