

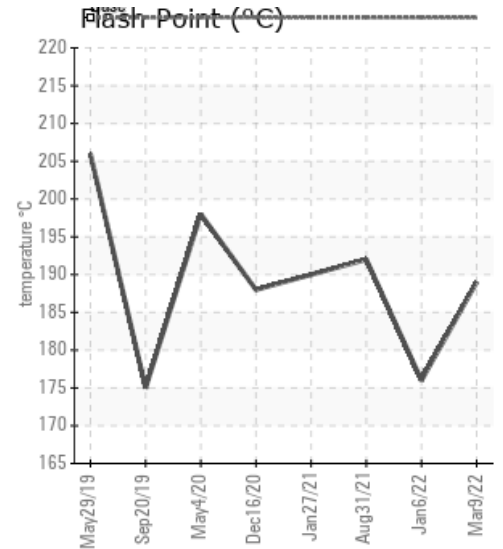
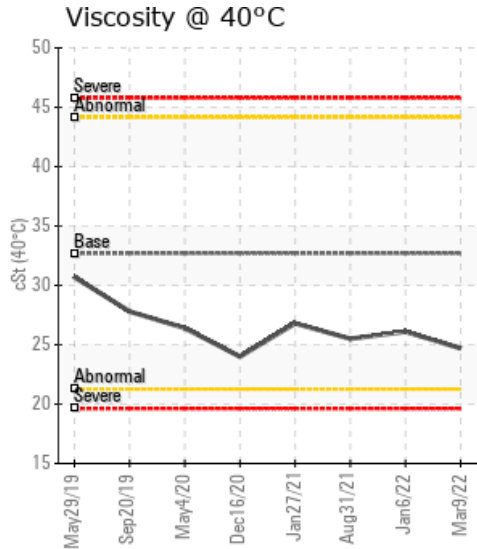
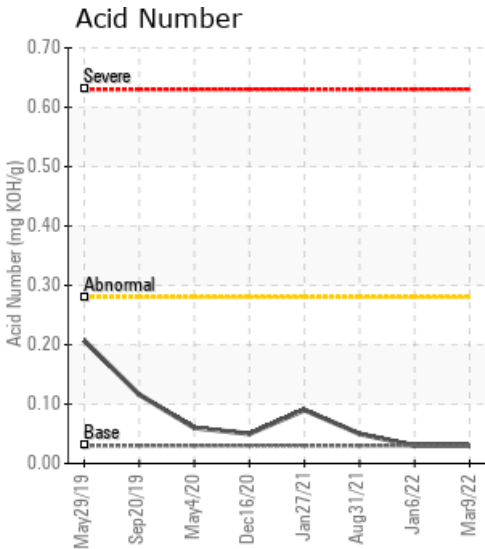
FILLER HEATER

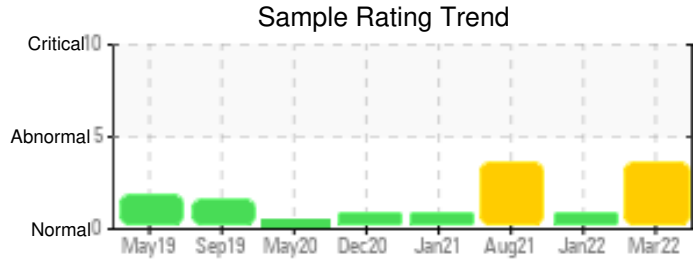
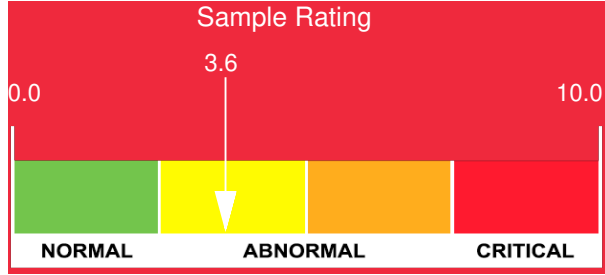
Customer: PTRHTF10068	System Information	Sample Information
Certainteed - Saint Gobain 1077 PLEASANT ST NORWOOD, MA 02062 USA Attn: Carol Turgeon Tel: (781)278-0463 E-Mail: carol.turgeon@saint-gobain.com	System Volume: 2200 gal Bulk Operating Temp: 550F / 288C Heating Source: Blanket: Fluid: PETRO CANADA CALFLO AF Make: PERFORMANCE HEATING	Lab No: 02479575 Analyst: Joe Goecke Sample Date: 03/09/22 Received Date: 03/25/22 Completed: 03/30/22 Joe Goecke joe.goecke@HFSinclair.com

Recommendation: While the flash point remains consistent there is rise in low boilers above 10% and the viscosity has dropped to a 22 grade. I recommend planning to vent the system soon to improve these conditions.

Comments: (GCD) 10% Distillation Point is abnormally low. (GCD) % < 335°C is marginally high. COC Flash Point is marginally low.

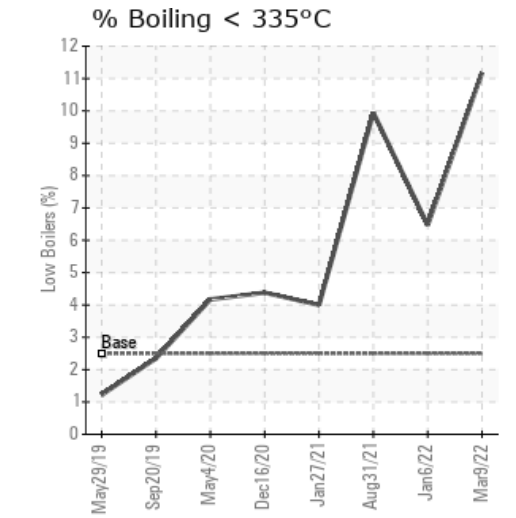
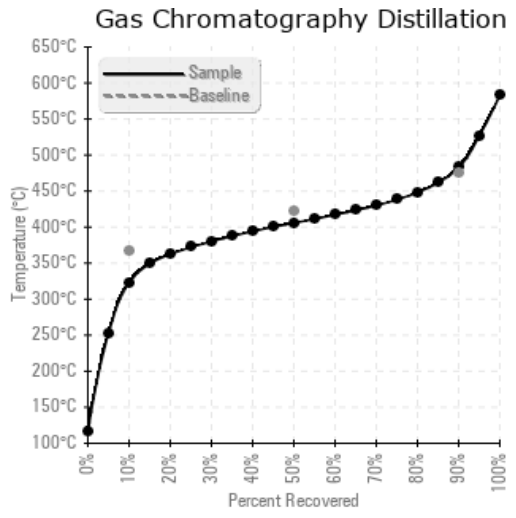
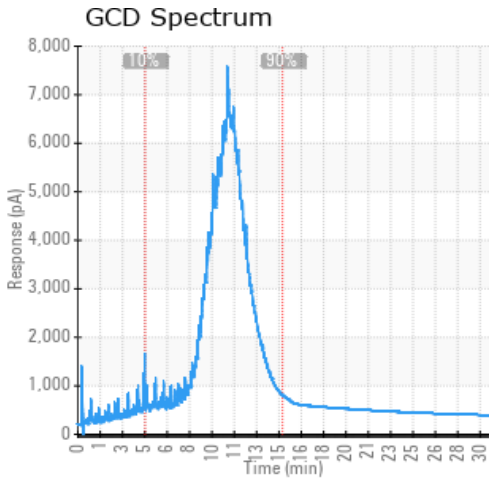
Sample Date	Received Date	Fluid Age	Sample Location	Flash Point (COC)	Water (KF)	Viscosity (40°C)	Acid Number	Solids	GCD 10%	GCD 50%	GCD 90%	GCD % < 335°C
	mm/dd/yy			°F/°C	ppm	cSt	mg/KOH/g	%wt	°F/°C	°F/°C	°F/°C	%
03/09/22	03/25/22	36.0m	duplex pump	372 / 189	9.3	24.7	0.03	0.024	613 / 323	762 / 406	900 / 482	11.18
01/06/22	01/18/22	36.0m	duplex pump	349 / 176	14.5	26.1	0.03	0.044	667 / 353	789 / 421	901 / 483	6.47
08/31/21	09/10/21	0.0m	duplex pump	378 / 192	13.9	25.5	0.05	0.028	630 / 332	763 / 406	893 / 478	9.94
01/27/21	02/02/21	33.0m	Duplex pump	374 / 190	3.5	26.8	0.09	0.052	686 / 363	794 / 424	903 / 484	4.00
12/16/20	01/20/21	19.0m	DUPLEX PUMP	370 / 188	8.1	24.0	0.05	0.066	684 / 362	794 / 423	903 / 484	4.38
Baseline Data				435 / 224		32.7	0.03		693 / 367	790 / 421	887 / 475	2.5





Sample Date	Iron	Chromium	Nickel	Aluminum	Copper	Lead	Tin	Cadmium	Silver	Vanadium	Silicon	Sodium	Potassium	Titanium	Molybdenum	Antimony	Manganese	Lithium	Boron	Magnesium	Calcium	Barium	Phosphorus	Zinc
03/09/22	0	0	0	0	0	0	0	0	0	0	0	0	0	0	0	0	0	0	0	0	0	0	19	0
01/06/22	3	0	0	0	0	0	0	0	0	0	0	0	0	0	0	0	0	0	0	0	0	0	23	0
08/31/21	0	0	0	0	0	0	0	0	0	0	0	0	0	0	0	0	0	0	0	0	0	0	16	0
01/27/21	0	0	0	0	0	0	0	0	0	0	0	0	0	0	0	0	0	0	0	0	0	0	20	0
12/16/20	1	0	0	0	0	0	0	0	0	0	0	0	0	0	0	0	0	0	1	0	0	0	31	0
Baseline Data			0	0						0			0	0					0				270	

Elemental analysis results (above) in parts per million (ppm). [10,000 ppm = 1.0%]



Historical Comments	
01/06/22	Flash point is trending lower at 176C. Viscosity is holding steady and light ends have dropped from previous sample but still over 5%. Oil is suitable for continued use and resample at next scheduled interval. COC Flash Point is abnormally low.
08/31/21	low boilers approaching 10%. Consider venting system to reduce impact on viscosity and flashpoint. resample at scheduled interval. (GCD) % < 335°C is marginally high. (GCD) 10% Distillation Point is marginally low. COC Flash Point is marginally low.
01/27/21	The sample results for the Filler Heater have shown slight improvements with Flash point from 188 to 190. Low boilers GCD 10% 363.4 have shown a slight increase whereas GCD 90% 483.7 have decrease slightly. Acid number has also increased from .05 to .09. Continue to monitor at planned intervals. COC Flash Point is marginally low.
12/16/20	This new Higher Temp system continues to effect HTF condition. We are noticing that the viscosity has dropped to 24.0 cSt @ 40C as well as COC Flash point which has dropped to 188. We recommend Venting (boil-off), as soon as possible. We would also recommend venting more frequently and adding fresh (make-up) fluid more frequently to assist with fluid condition. There is no asphalt contamination reported at this time. COC Flash Point is marginally low.

Petro-Canada makes no representation or warranty of any kind, either express or implied, as to the accuracy or completeness of the analysis and assumes no responsibility and shall have no liability whatsoever with respect to such analysis, or a party's use of it. Petro-Canada is a division of HollyFrontier Corporation.