

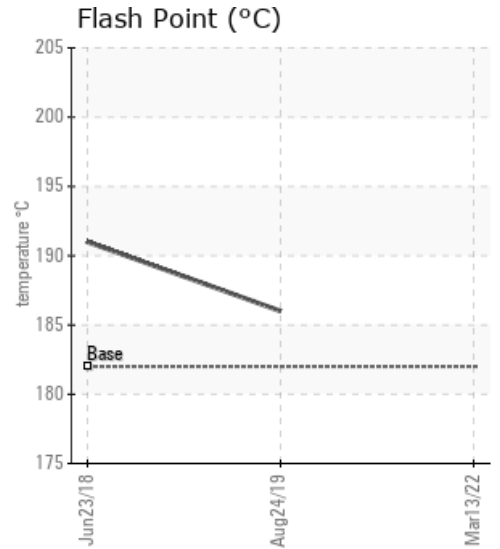
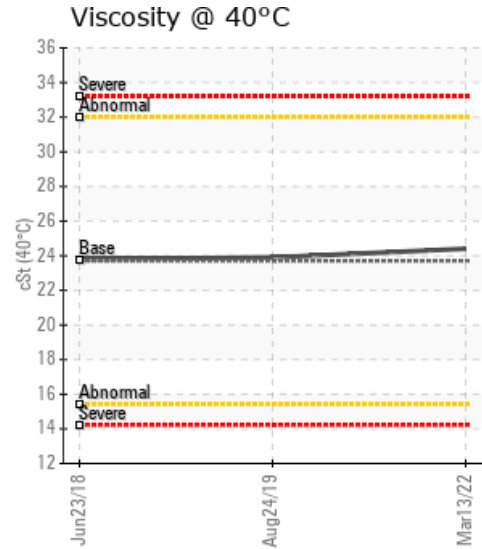
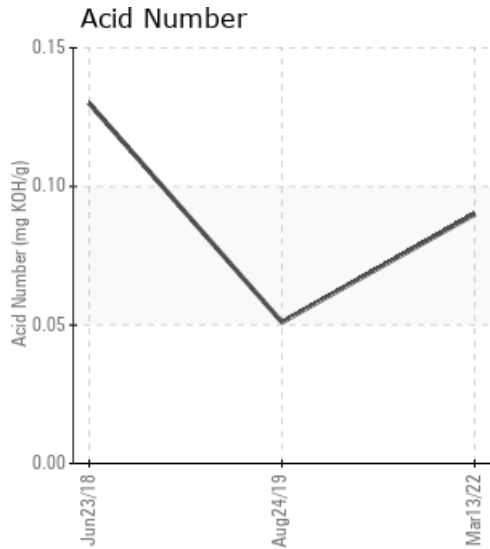
KAONA FUTHER 2

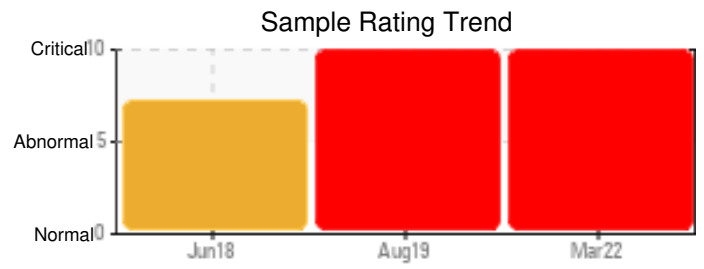
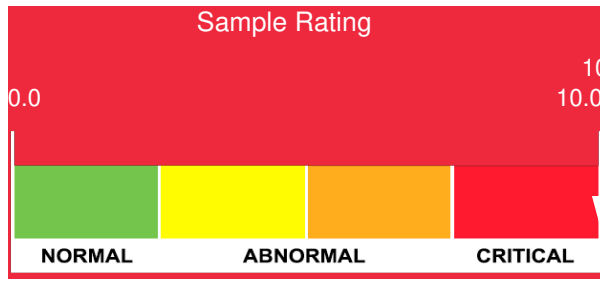
Customer: PTRHTF60010	System Information	Sample Information
SYNLUBE INTERNATIONAL CO LTD 76/1 MOO.7 THACHIN MUANG SAMUTSAKHON, 74000 THAILAND Attn: CHERNPORN CHOBKUI Tel: 034421290 E-Mail: chernporn@synlube.co.th	System Volume: 4400 ltr Bulk Operating Temp: 545F / 285C Heating Source: Blanket: Fluid: EASTMAN THERMINOL XP Make:	Lab No: 02480441 Analyst: Bill Quesnel CLS,OMA II,MLA-III,LLA-I Sample Date: 03/13/22 Received Date: 03/30/22 Completed: 04/05/22 Bill Quesnel CLS,OMA II,MLA-III,LLA-I

Recommendation: Not a Petro-Canada Fluid so no parameters with which to make an accurate diagnosis. However, the water contamination is extremely high and this causes multiple issues for the fluid, and is a safety concern as the fluid can bump in the system. Regardless of product I would recommend a change and switch to Petro-Canada CALFLO HTF or PURITY FG HTF depending on application. A flush and clean will be essential based on the competitor product and the condition.

Comments: ppm Water contamination levels are severely high. Water contamination levels are severely high. Could not measure the Boiling Points/SimDis as the water content is too high in this oil.

Sample Date	Received Date	Fluid Age	Sample Location	Flash Point (COC)	Water (KF)	Viscosity (40°C)	Acid Number	Solids	GCD 10%	GCD 50%	GCD 90%	GCD % < 335°C
	mm/dd/yy			°F/°C	ppm	cSt	mg/KOH/g	%wt	°F/°C	°F/°C	°F/°C	%
03/13/22	03/30/22	12.0y	SUPPLY RETURN		1418166	24.4	0.09	0.039				
08/24/19	10/04/19	11.0y	SUPPLY RETURN	367 / 186	8118.0	23.9	0.051	0.040	670 / 355	768 / 409	882 / 472	5.61
06/23/18	07/13/18	10.0y	SUPPLY/RETURN	376 / 191	14555.4	23.8	0.13	0.116	691 / 366	777 / 414	901 / 483	1.94
Baseline Data				360 / 182		23.7			630 / 332		781 / 416	

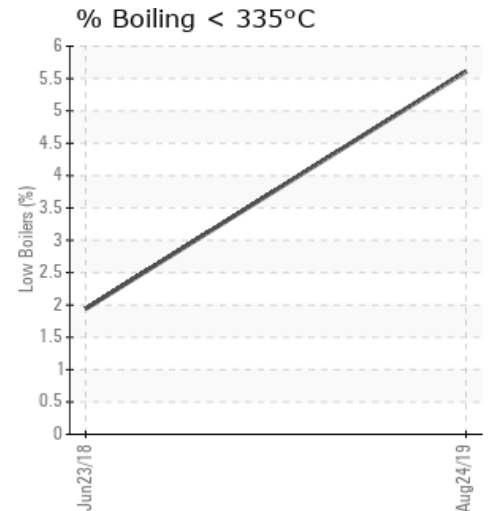
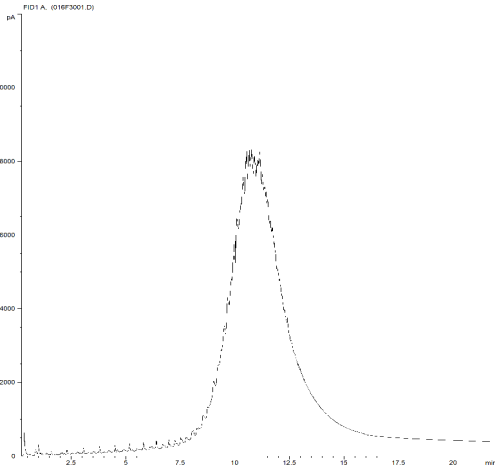




Sample Date	Iron	Chromium	Nickel	Aluminum	Copper	Lead	Tin	Cadmium	Silver	Vanadium	Silicon	Sodium	Potassium	Titanium	Molybdenum	Antimony	Manganese	Lithium	Boron	Magnesium	Calcium	Barium	Phosphorus	Zinc	
03/13/22	2	0	0	0	0	0	0	0	0	0	0	0	0	0	0	0	0	0	0	0	0	0	1	0	
08/24/19	0	0	0	0	0	0	0	0	0	0	0	0	0	0	0	0	0	0	0	0	0	0	0	0	0
06/23/18	0	0	0	0	0	0	0	0	0	0	0	0	0	0	0	0	0	0	0	0	0	0	0	0	0
Baseline Data			0	0						0			0	0					0				0		

Elemental analysis results (above) in parts per million (ppm). [10,000 ppm = 1.0%]

GCD Spectrum



Historical Comments

08/24/19	Not a Petro-Canada Fluid so no parameters with which to make an accurate diagnosis. However, the water contamination is extremely high and this causes multiple issues for the fluid. Regardless of product I would recommend a change and switch to Petro-Canada CALFLO HTF or PURITY FG HTF depending on application. A flush and clean will be essential based on the competitor product and the condition. ppm Water contamination levels are severely high. Water contamination levels are severely high. (GCD) 90% Distillation Point is severely high. (GCD) 10% Distillation Point is marginally high.
06/23/18	The current fluid has normal viscosity. The low flash point is a concern for the 285C high bulk oil temperature. The water content is extremely high. The fluid needs to be changed due to the severe water contamination. Water contamination levels are severely high. Water contamination levels are severely high (GCD) 10% Distillation Point is severely high. (GCD) 90% Distillation Point is severely high.

Petro-Canada makes no representation or warranty of any kind, either express or implied, as to the accuracy or completeness of the analysis and assumes no responsibility and shall have no liability whatsoever with respect to such analysis, or a party's use of it. Petro-Canada is a division of HollyFrontier Corporation.