

## [KEYERA BRAZEAU RIVER GAS PLANT / 3-12-46-14W5] PLANT 1

**Customer: PTRHTF30084**  
 Keyera Partnership Brazeau River Ga...  
 Box 7318  
 Drayton Valley, AB T7A 1S5 Canada  
 Attn: Gareth Buchanan  
 Tel: (780)913-1176  
 E-Mail: gareth\_buchanan@keyera.com

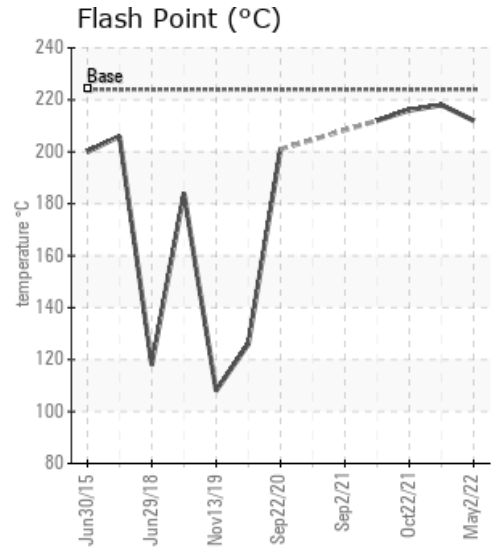
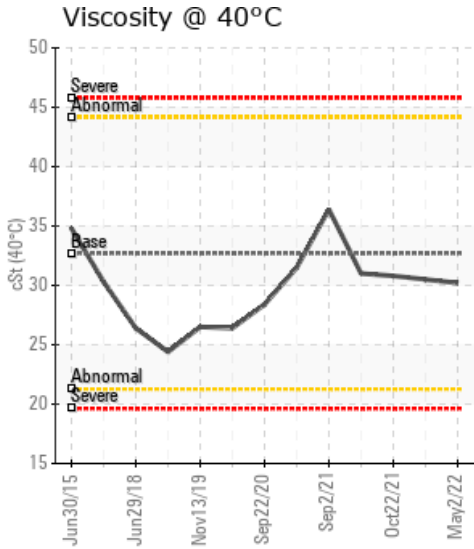
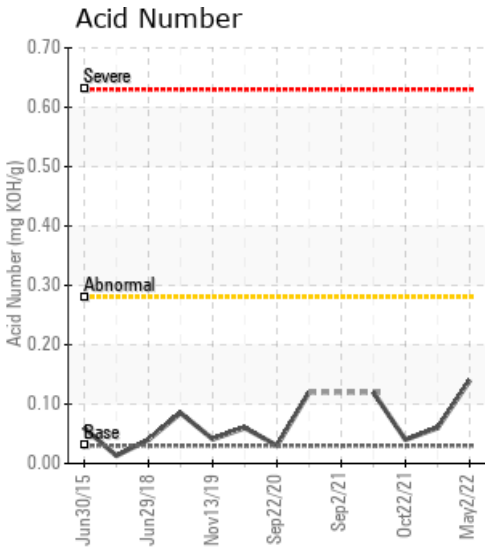
**System Information**  
 System Volume: 14000 ltr  
 Bulk Operating Temp: 446F / 230C  
 Heating Source:  
 Blanket:  
 Fluid: PETRO CANADA CALFLO AF  
 Make: IAP HEATER

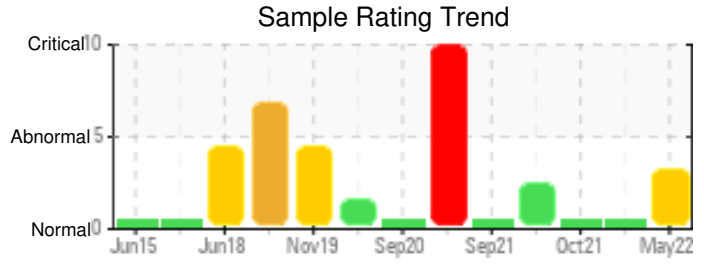
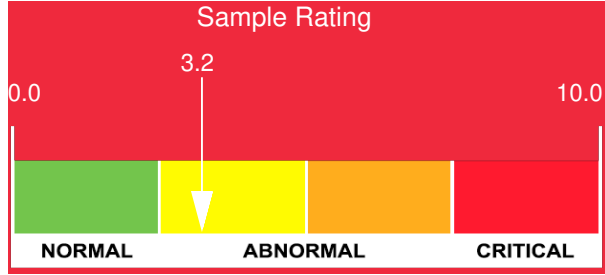
**Sample Information**  
 Lab No: 02487667  
 Analyst: Lyle Dach  
 Sample Date: 05/02/22  
 Received Date: 05/09/22  
 Completed: 05/16/22  
 Lyle Dach  
 lyle.dach@hollyfrontier.com

Recommendation: Water content has climbed again, ensure all ingress locations are closed. Is there any process locations that could allow water to enter the heating fluid? It would be best to boil off excess water to reduce the corrosion risk, vent the steam to ensure there are no unwanted boil overs. Confirm samples are representative of the entire system, if possible the collection points are turbulent areas (pump discharge) and that sample lines are purged until hot fluid has flowed for several seconds prior to collecting the sample. Resample in 6 months.

Comments: Water contamination levels are severely high. ppm Water contamination levels are severely high.

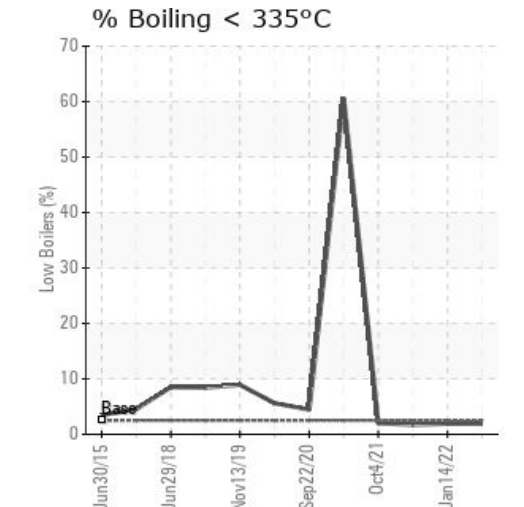
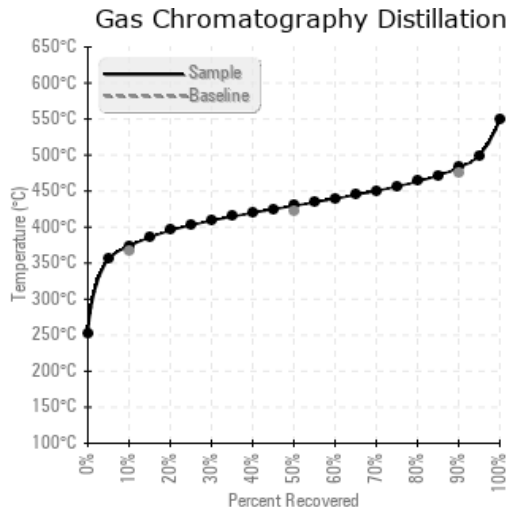
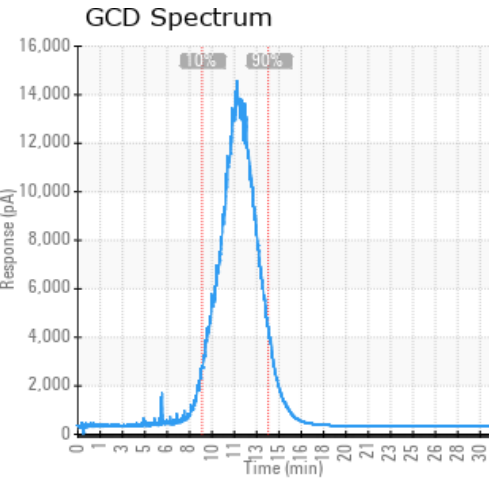
Sample Date	Received Date	Fluid Age	Sample Location	Flash Point (COC)	Water (KF)	Viscosity (40°C)	Acid Number	Solids	GCD 10%	GCD 50%	GCD 90%	GCD % < 335°C
	mm/dd/yy			°F/°C	ppm	cSt	mg/KOH/g	%wt	°F/°C	°F/°C	°F/°C	%
05/02/22	05/09/22	12.0m	Hot oil filter	414 / 212	1015.6	30.2	0.14	0.060	704 / 374	805 / 430	900 / 482	1.91
01/14/22	02/04/22	0.0m	hot oil pump 1	424 / 218	308.7	30.5	0.06	0.034	703 / 373	804 / 429	899 / 482	1.90
10/22/21	11/02/21	0.0m	HOT OIL PUMP #1	421 / 216	254.8	30.8	0.04	0.053	705 / 374	805 / 429	899 / 482	1.72
10/04/21	10/13/21	0.5m	after pump	414 / 212	578.5	31.0	0.12	0.178	704 / 373	804 / 429	897 / 481	2.00
09/02/21	09/20/21	14.0m			1020.7	36.4						
Baseline Data				435 / 224		32.7	0.03		693 / 367	790 / 421	887 / 475	2.5





Sample Date	Iron	Chromium	Nickel	Aluminum	Copper	Lead	Tin	Cadmium	Silver	Vanadium	Silicon	Sodium	Potassium	Titanium	Molybdenum	Antimony	Manganese	Lithium	Boron	Magnesium	Calcium	Barium	Phosphorus	Zinc
05/02/22	2	0	0	0	0	0	0	0	0	0	0	0	1	0	0	0	0	0	7	0	0	0	45	0
01/14/22	0	0	0	0	0	0	0	0	0	0	0	0	0	0	0	0	0	0	5	0	0	0	56	0
10/22/21	8	0	0	0	0	0	0	0	0	0	0	0	2	0	0	0	0	0	7	0	0	0	77	0
10/04/21	1	0	0	0	0	0	0	0	0	0	0	0	1	0	0	0	0	0	10	0	0	0	68	0
09/02/21	64	0	0	0	0	0	1	0	0	0	2	6	16	0	0	0	0	0	21	0	2	0	63	0
Baseline Data			0	0						0			0	0					0				270	

Elemental analysis results (above) in parts per million (ppm). [10,000 ppm = 1.0%]



Historical Comments	
01/14/22	Sample results indicate that the fluid is in suitable condition for continued service. Resample in 12 months
10/22/21	Sample results indicate that the fluid is in suitable condition for continued service. Metals, and contamination are all very low. Water has been reduced to a safe level but is still higher than 2020 samples. Viscosity and flashpoint are in spec and acid # is low. GCD is good and pentane insolubles are low. Resample in 1 year.
10/04/21	Fluid appears to be in good condition other than the water content being in alarm. Water content is at much lower levels than previous samples. It would be best to boil off the water and vent the steam to ensure there are no unwanted boil overs and reduce the corrosion risk. Fluid is Calfo AF not HTF Water contamination levels are marginally high. ppm Water contamination levels are marginally high.
09/02/21	We advise that you check for the source of water entry. Check seals and/or filters for points of contaminant entry. Lubritest recommends using HTTFL sample kits for heat transfer fluids. Please contact us at 1-800-268-2131 and provide a purchase order for \$245 + HST in order to conduct additional testing (boiling points @ 10%, 50%, and 90%, percent boiling < 335°C, and solids) to determine the suitability for continued use. Please contact your representative for information regarding the proper sampling kits for your service. (not applicable) There is a high concentration of water present in the fluid. (not applicable)

Petro-Canada makes no representation or warranty of any kind, either express or implied, as to the accuracy or completeness of the analysis and assumes no responsibility and shall have no liability whatsoever with respect to such analysis, or a party's use of it. Petro-Canada is a division of HollyFrontier Corporation.