

# PM #1 STACK HOT OIL SYSTEM

**Customer: PTRHTF30073**  
 IRVING PAPER LTD  
 435 BAYSIDE DRIVE  
 SAINT JOHN, NB E2L 4K9 Canada  
 Attn: Terry Tomney  
 Tel: (506)650-8435  
 E-Mail: tomney.terry@irvingpaper.com

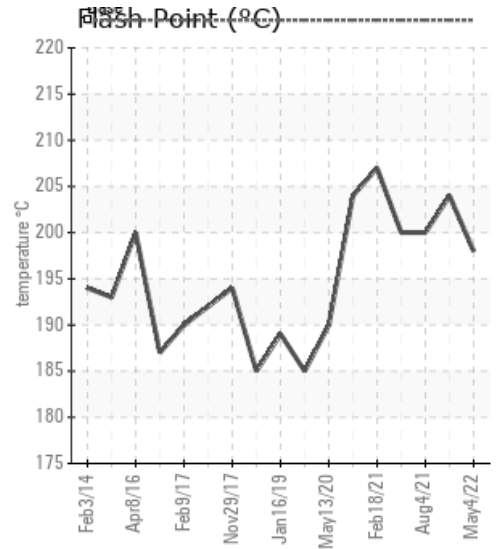
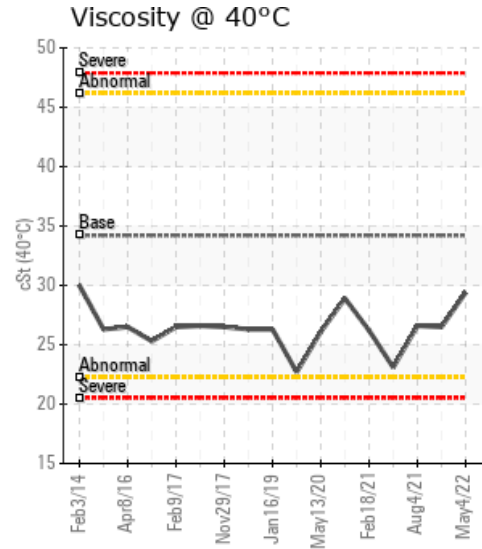
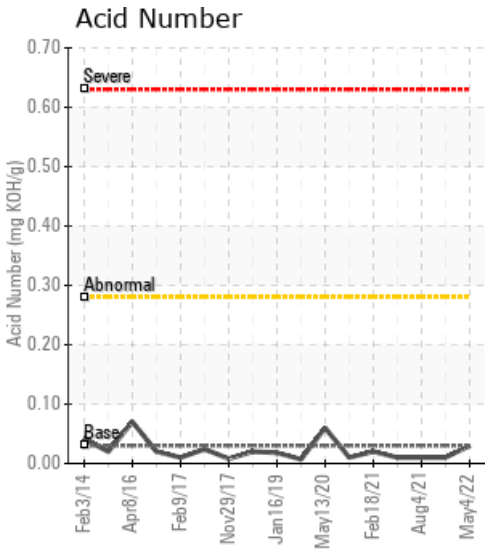
**System Information**  
 System Volume: 3500 ltr  
 Bulk Operating Temp: 536F / 280C  
 Heating Source:  
 Blanket:  
 Fluid: PETRO CANADA PETRO-THERM  
 Make: METSO

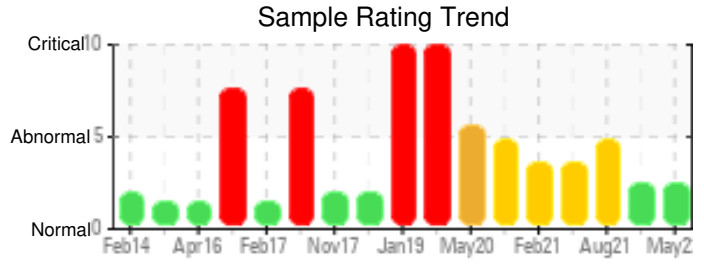
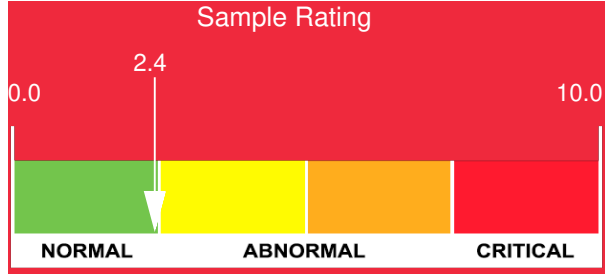
**Sample Information**  
 Lab No: 02488679  
 Analyst: Luc Leblanc  
 Sample Date: 05/04/22  
 Received Date: 05/13/22  
 Completed: 05/24/22  
 Luc Leblanc  
 luc.leblanc@HFSinclair.com

Recommendation: The fluid is in great condition overall. Exact maintenance practices (fluid top ups, venting) are unknown. Consult with your Petro-Canada representative should you have questions. Continue monitoring results for flash point and GCD distillation curve in the next sample.

Comments: Elemental analysis of wear and rust particles is excellent. Both pentane insolubles and water concentrations are very low. (GCD) 10% Distillation Point is abnormally low, but stable. The flash point is slightly reduced (198°C). These trends, along with the slightly elevated GCD 5.06% <335°C can be attributed to high nitrogen blanket pressures. The Acid Number of 0.03 is well below the warning threshold.

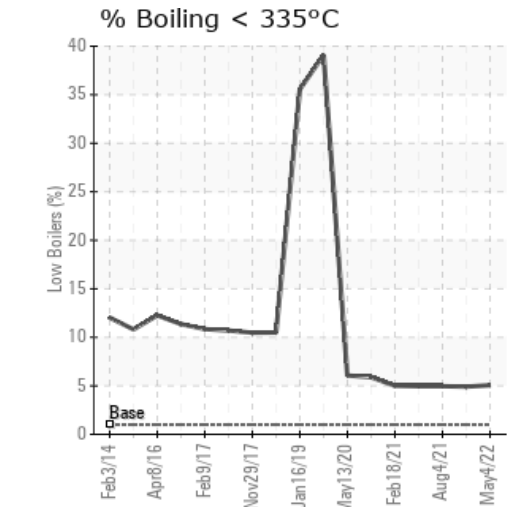
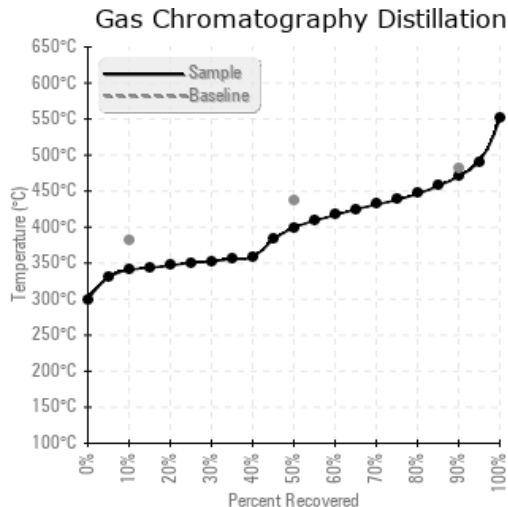
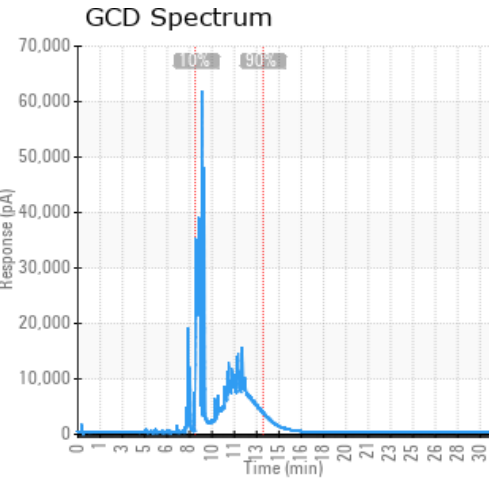
Sample Date	Received Date	Fluid Age	Sample Location	Flash Point (COC)	Water (KF)	Viscosity (40°C)	Acid Number	Solids	GCD 10%	GCD 50%	GCD 90%	GCD % < 335°C
	mm/dd/yy			°F/°C	ppm	cSt	mg/KOH/g	%wt	°F/°C	°F/°C	°F/°C	%
05/04/22	05/13/22	9.0y	manifold from system	388 / 198	21.7	29.4	0.03	0.016	645 / 341	751 / 399	879 / 470	5.06
09/15/21	09/24/21	8.0y		399 / 204	22.7	26.5	0.01	0.032	648 / 342	736 / 391	873 / 467	4.91
08/04/21	08/10/21	8.0y	system was sweetened	392 / 200	65.3	26.6	0.01	0.026	647 / 342	721 / 383	863 / 462	4.96
08/04/21	08/10/21	8.0y	manifold from sys.	392 / 200	64.6	23.1	0.01	0.029	648 / 342	718 / 381	865 / 463	4.96
02/18/21	02/23/21	8.0y	Manifold from sys.	405 / 207	0.6	26.2	0.02	0.041	647 / 342	724 / 385	870 / 466	5.01
Baseline Data				433 / 223		34.2	0.03		720 / 382	817 / 436	900 / 482	1.00





Sample Date	Iron	Chromium	Nickel	Aluminum	Copper	Lead	Tin	Cadmium	Silver	Vanadium	Silicon	Sodium	Potassium	Titanium	Molybdenum	Antimony	Manganese	Lithium	Boron	Magnesium	Calcium	Barium	Phosphorus	Zinc
05/04/22	0	0	0	0	0	0	0	0	0	0	0	0	0	0	0	0	0	0	0	0	0	1	1	2
09/15/21	0	0	0	0	0	0	0	0	0	0	0	0	0	0	0	0	0	0	0	0	0	0	0	0
08/04/21	0	0	0	0	0	0	0	0	0	0	0	0	0	0	0	0	0	0	0	0	0	0	0	0
08/04/21	0	0	0	0	0	0	0	0	0	0	0	0	0	0	0	0	0	0	0	0	0	0	0	0
02/18/21	0	0	0	0	0	0	0	0	0	0	0	0	2	0	0	0	0	0	0	0	0	0	0	0
Baseline Data			0	0						0			0	0					0				0	

Elemental analysis results (above) in parts per million (ppm). [10,000 ppm = 1.0%]



Historical Comments	
09/15/21	Recommendation: No Iron Presence. Sulphur content still present at 288 ppm. COC Flash point at 204°C is always correct. Pentane Insoluble is to 0.032 and stay under the limit of 0.30. Viscosity is abnormal if the Petro-Therm is the product used. viscosity is for fresh oil 35.8 cSt @ 40C and we have 26.5 cSt @ 40C. If the product are a mix of product it's ok. GCD Distillation Point at 10% is abnormally low 342.1/382 = +10% difference. GCD Distillation Point at 50% is abnormally low 391.1/436 = +10%. GCD Distillation point is marginal low 467.1/482 = +3% difference. The Heat Transfer Fluid GCD graphics is heavily cracked (low boiler presence level is high, High boilers are present). I recommend cleaning and flushing of the heat transfer system and replacing the fluid with fresh Petro-Therm or Callo AF. (GCD) 50% Distillation Point is abnormally low. (GCD) 90% Distillation Point is marginally low. (GCD) 10% Distillation Point is marginally low.
08/04/21	Recommendation: No Iron Presence. Sulphur content still present at 226 ppm. COC Flash point at 200°C is OK. Pentane Insoluble are under the limit of 0.30. GCD Distillation Point at 10% is abnormally low 341.9/382 = +10% difference. GCD Distillation Point at 50% are severely low 382.8/436 = +12%. GCD Distillation point are abnormally low 462.6/482 = +4% difference. Heat transfer fluid viscosity is ISO VG 22, it should be an ISO VG 32. According to WearCheck there is approximately 25% of the previous oil in the heat transfer system. The Heat Transfer Fluid is heavily cracked (low boiler presence level is high, High boilers are present) the viscosity of the HTF is lower than it should be. I recommend cleaning and flushing of the heat transfer system and replacing the fluid with fresh Petro-Therm. (GCD) 50% Distillation Point is severely low. (GCD) 90% Distillation Point is severely low. (GCD) 10% Distillation Point is abnormally low.
08/04/21	Recommendation: No Iron Presence. Sulphur content still present at 215 ppm. COC Flash point at 207°C is OK. Pentane Insoluble are under the limit of 0.30. GCD Distillation Point at 10% is abnormally low 342.0/382 = +10% difference. GCD Distillation Point at 50% are severely low 381.2/436 = +13%. GCD Distillation point are abnormally low 462.6/482 = +4% difference. The Heat Transfer Fluid is heavily cracked (low boiler presence level is high, High boilers are present). I recommend cleaning and flushing of the heat transfer system and replacing the fluid with fresh Petro-Therm or Callo AF. (GCD) 50% Distillation Point is severely low. (GCD) 90% Distillation Point is abnormally low. (GCD) 10% Distillation Point is marginally low.
02/18/21	no presence of iron. The Sulphur content increased to 285 to 630. have you use cleaner or add another product in the system? COC Flash to 207 C Point is correct. The Pentane insoluble stay in limit under 0.30. the (GCD) 10% Distillation Point is abnormally low 341.7/382 C = +10% difference. the (GCD) 50% Distillation Point is severely low 384.5/436 C = +12% difference. the (GCD) 90% Distillation Point is abnormally low 465.6/482 C = +3.5% difference. Graphic 2/18/2021, heavily cracking low boiler presence and level is high. High boilers are present, the Heat Transfer oil look to be heavily cracked, the graphic is not good I recommend to ventilate to remove cracked low boiler, remove 20-25% of the to remove cracked high boilers, refresh the old HTF with new heat transfer oil. have you only one product in the system? or you have a mixture of many products (GCD) 50% Distillation Point is severely low. (GCD) 90% Distillation Point is abnormally low. (GCD) 10% Distillation Point is abnormally low.

Petro-Canada makes no representation or warranty of any kind, either express or implied, as to the accuracy or completeness of the analysis and assumes no responsibility and shall have no liability whatsoever with respect to such analysis, or a party's use of it. Petro-Canada is a division of HollyFrontier Corporation.