

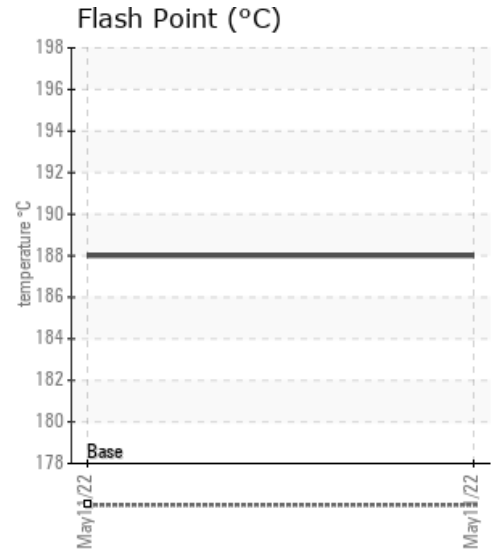
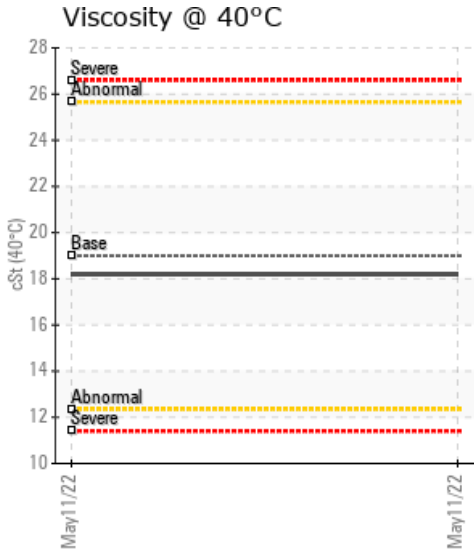
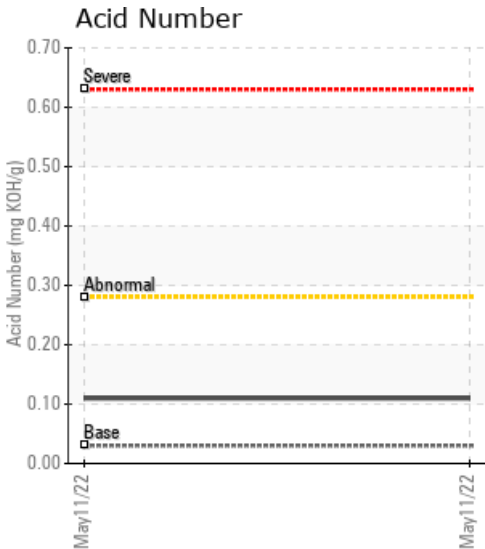
METRO M.D.F. CO., LTD (SAI NOI) PB2

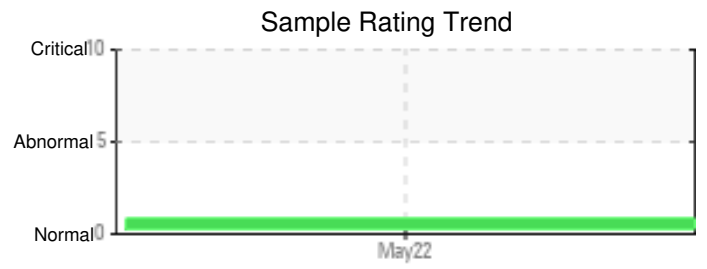
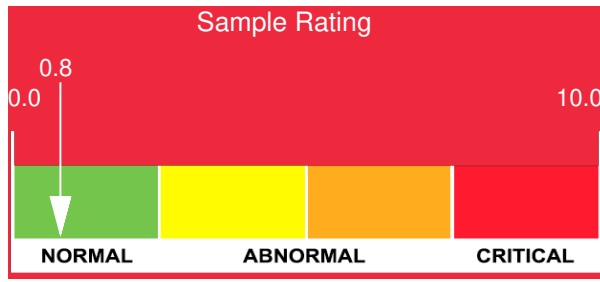
Customer: PTRHTF60010	System Information	Sample Information
SYNLUBE INTERNATIONAL CO LTD 76/1 MOO.7 THACHIN MUANG SAMUTSAKHON, 74000 THAILAND Attn: CHERNPORN CHOBKUI Tel: 034421290 E-Mail: chernporn@synlube.co.th	System Volume: 60000 ltr Bulk Operating Temp: 536F / 280C Heating Source: Blanket: Fluid: EASTMAN THERMINOL 55 Make:	Lab No: 02490274 Analyst: Bill Quesnel CLS,OMA II,MLA-III,LLA-I Sample Date: 05/11/22 Received Date: 05/24/22 Completed: 05/27/22 Bill Quesnel CLS,OMA II,MLA-III,LLA-I

Recommendation: Fluid is suitable for continued use. Resample at the next interval to monitor.

Comments: (GCD) 90% Distillation Point is abnormally high.

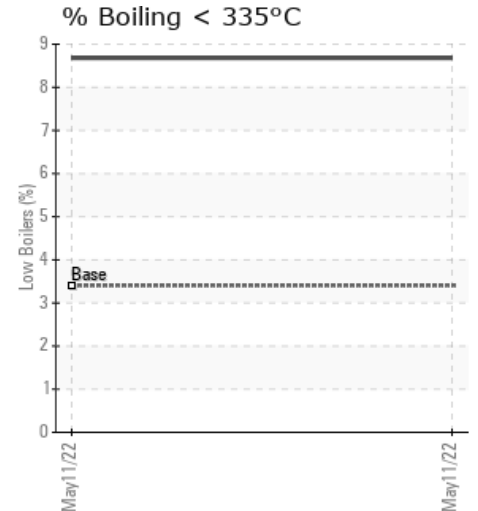
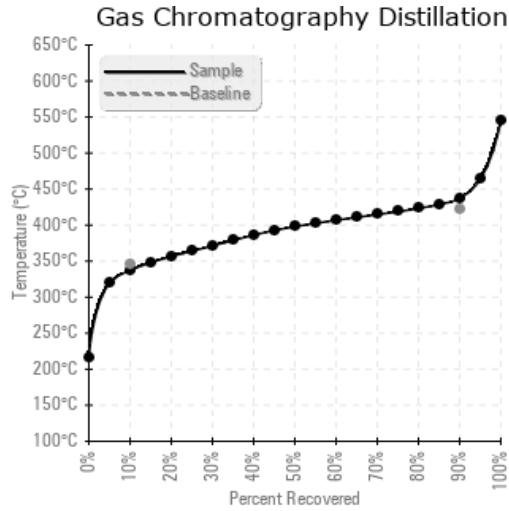
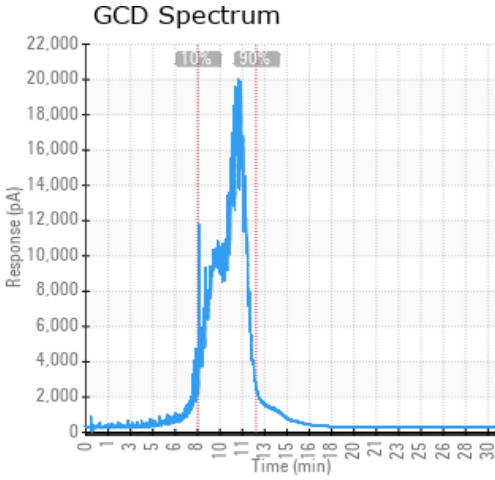
Sample Date	Received Date	Fluid Age	Sample Location	Flash Point (COC)	Water (KF)	Viscosity (40°C)	Acid Number	Solids	GCD 10%	GCD 50%	GCD 90%	GCD % < 335°C
	mm/dd/yy			°F/°C	ppm	cSt	mg/KOH/g	%wt	°F/°C	°F/°C	°F/°C	%
05/11/22	05/24/22	10.0y	supply and return	370 / 188	25.2	18.2	0.11	0.201	639 / 337	748 / 398	818 / 437	8.68
Baseline Data				349 / 176		19.0	0.03		655 / 346		790 / 421	3.40





Sample Date	Iron	Chromium	Nickel	Aluminum	Copper	Lead	Tin	Cadmium	Silver	Vanadium	Silicon	Sodium	Potassium	Titanium	Molybdenum	Antimony	Manganese	Lithium	Boron	Magnesium	Calcium	Barium	Phosphorus	Zinc
05/11/22	1	0	0	0	0	0	0	0	0	0	0	0	0	0	0	0	0	0	0	0	3	0	0	0
Baseline Data			0	0						0			0	0					0				0	

Elemental analysis results (above) in parts per million (ppm). [10,000 ppm = 1.0%]



Historical Comments

Petro-Canada makes no representation or warranty of any kind, either express or implied, as to the accuracy or completeness of the analysis and assumes no responsibility and shall have no liability whatsoever with respect to such analysis, or a party's use of it. Petro-Canada is a division of HollyFrontier Corporation.