

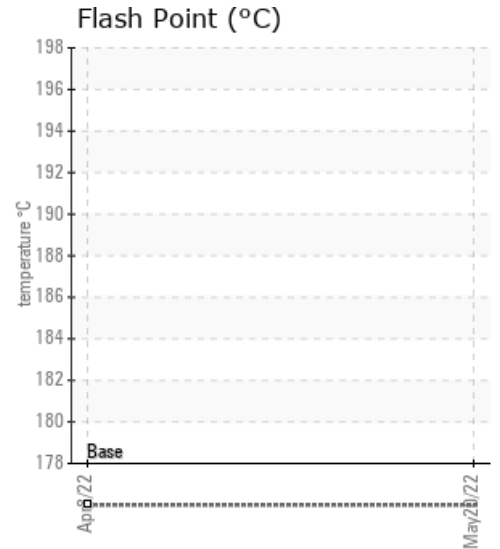
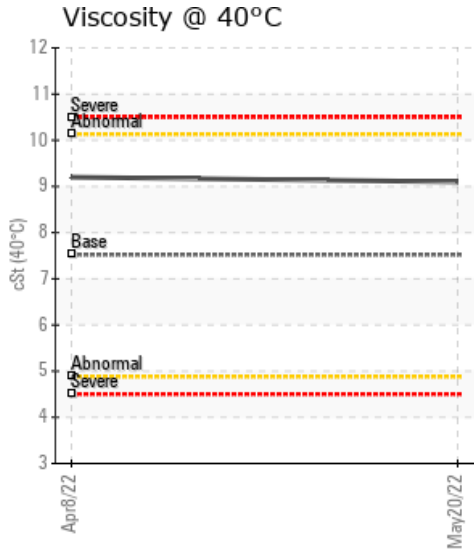
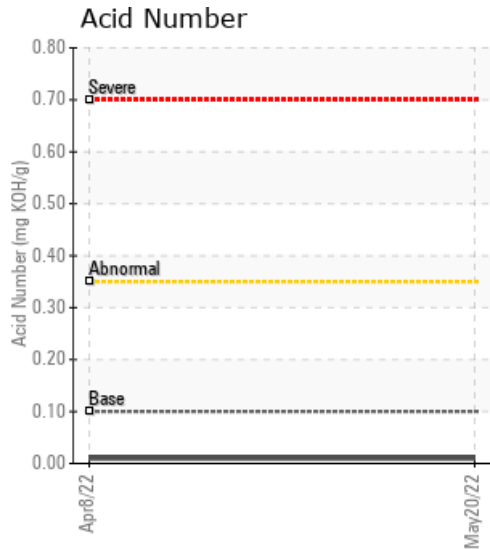
VAPORIZER #5

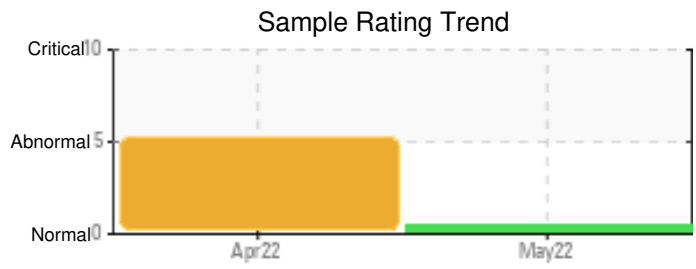
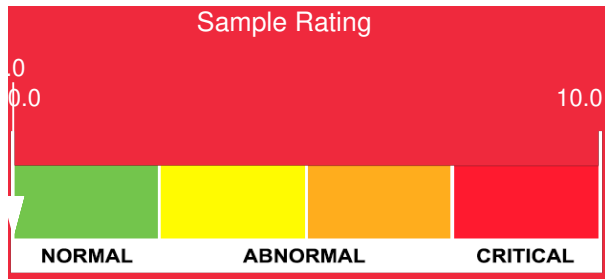
Customer: PTRHTF10092	System Information	Sample Information
REC GROUP 119410 RICK JONES WAY BUTTE (SILVER BOW), MT 59750 USA Attn: ZACK KELLY Tel: (406)496-9717 E-Mail: zack.kelly@recgroup.com	System Volume: 0 gal Bulk Operating Temp: 400F / 204C Heating Source: Blanket: Fluid: PETRO CANADA CALFLO LT Make:	Lab No: 02492748 Analyst: Ron LeBlanc Sample Date: 05/20/22 Received Date: 06/06/22 Completed: 06/09/22 Ron LeBlanc Ronald.LeBlancSr@hollyfrontier.com

Recommendation: Sample appears normal. Resample in 3 months.

Comments:

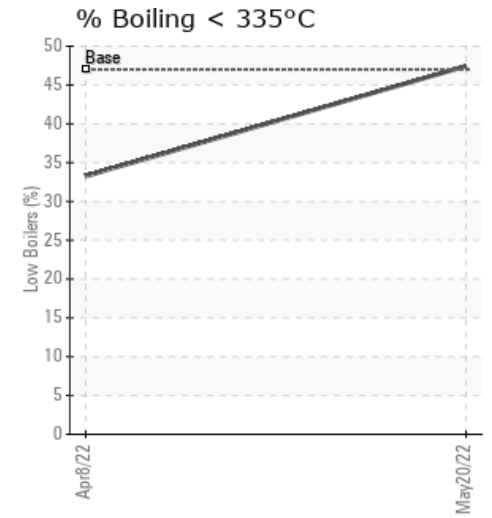
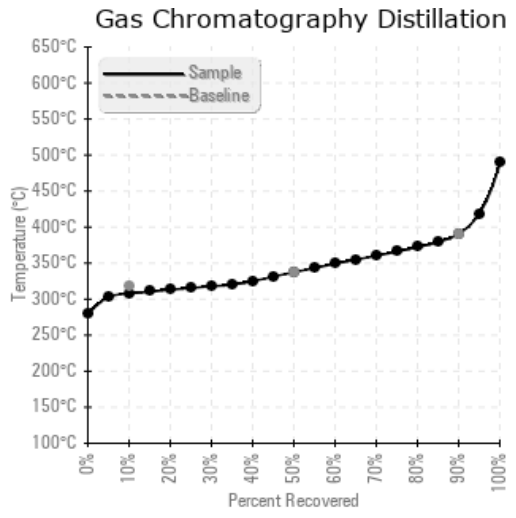
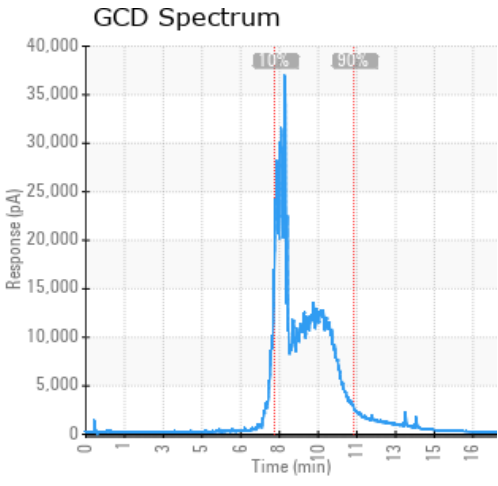
Sample Date	Received Date	Fluid Age	Sample Location	Flash Point (COC)	Water (KF)	Viscosity (40°C)	Acid Number	Solids	GCD 10%	GCD 50%	GCD 90%	GCD % < 335°C
	mm/dd/yy			°F/°C	ppm	cSt	mg/KOH/g	%wt	°F/°C	°F/°C	°F/°C	%
05/20/22	06/06/22	0.0y		370 / 188	1.6	9.1	0.01	0.018	586 / 308	639 / 337	735 / 390	47.44
04/08/22	04/27/22	0.0y	sst #5		4619.7	9.2	0.01	0.062	614 / 323	672 / 355	773 / 412	33.25
Baseline Data				349 / 176		7.52	0.1		604 / 318	640 / 338	734 / 390	47.0





Sample Date	Iron	Chromium	Nickel	Aluminum	Copper	Lead	Tin	Cadmium	Silver	Vanadium	Silicon	Sodium	Potassium	Titanium	Molybdenum	Antimony	Manganese	Lithium	Boron	Magnesium	Calcium	Barium	Phosphorus	Zinc
05/20/22	0	0	0	0	0	0	0	0	0	0	14	8	2	0	0	0	0	0	0	0	0	0	255	0
04/08/22	0	0	0	0	1	6	0	0	0	0	17	40	0	0	0	0	0	0	2	0	0	0	251	0
Baseline Data			0	0						0			0	0				0	0				270	

Elemental analysis results (above) in parts per million (ppm). [10,000 ppm = 1.0%]



Historical Comments

04/08/22	*** NOTE: could not conduct COC Flash Point due to high water content ***Remove water from system and Resample. Water contamination levels are severely high. Water contamination levels are severely high.. ppm Water contamination levels are severely high. Water contamination levels are severely high.. ppm Water contamination levels are severely high. (GCD) 90% Distillation Point is severely high. Sodium ppm levels are abnormally high. (GCD) 50% Distillation Point is marginally high.

Petro-Canada makes no representation or warranty of any kind, either express or implied, as to the accuracy or completeness of the analysis and assumes no responsibility and shall have no liability whatsoever with respect to such analysis, or a party's use of it. Petro-Canada is a division of HollyFrontier Corporation.