

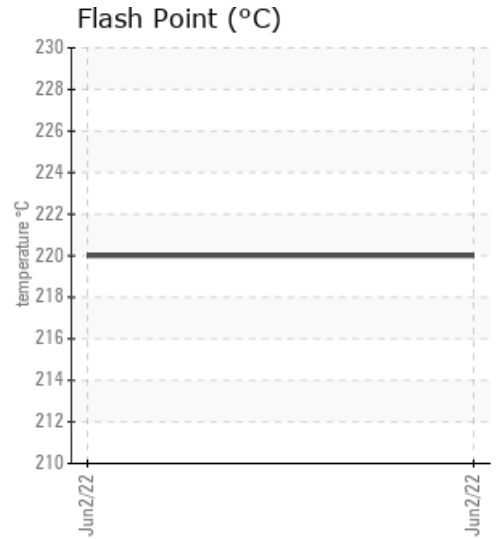
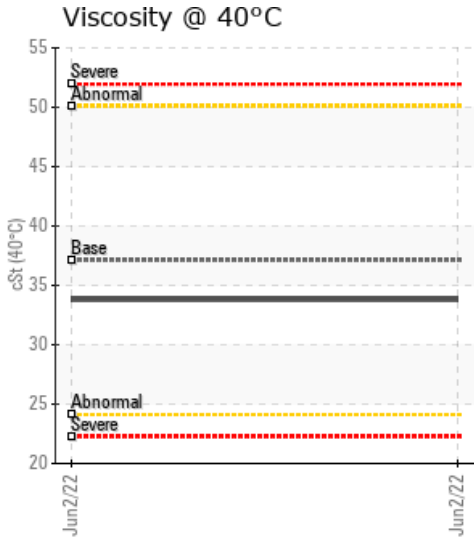
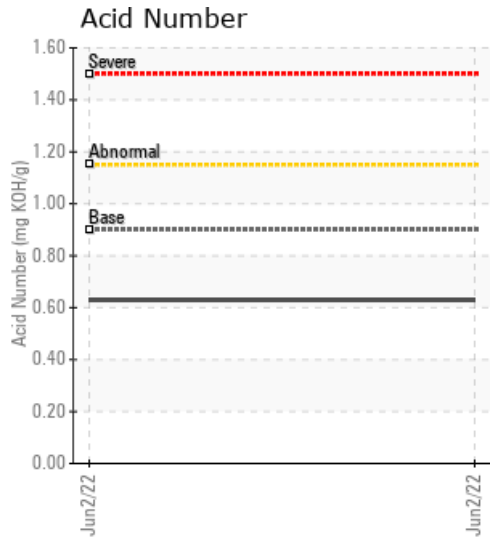
SCHARFF IP300H

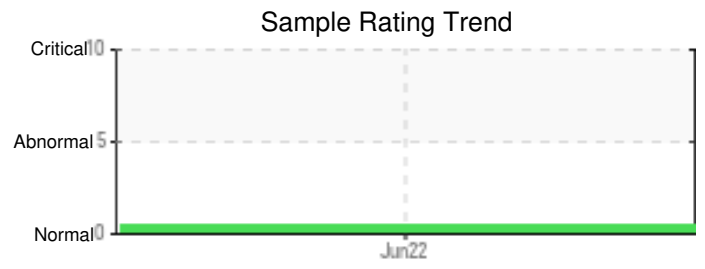
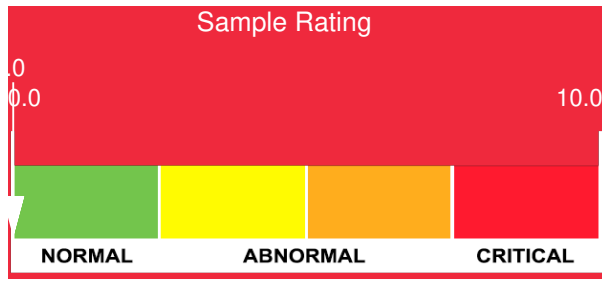
Customer: PTRHTF40014	System Information	Sample Information
GO-TAN BV SPOORSTRAAT 57 GELDERLAND KESTEREN, GEL NETHERLANDS Attn: Maintenance Manager Tel: E-Mail:	System Volume: 600 ltr Bulk Operating Temp: 509F / 265C Heating Source: Blanket: Fluid: PETRO CANADA PURITY FG HEAT TRANSFER FLUID Make: SCHARFF	Lab No: 02493026 Analyst: Bill Quesnel CLS,OMA II,MLA-III,LLA-I Sample Date: 06/02/22 Received Date: 06/07/22 Completed: 06/13/22 Bill Quesnel CLS,OMA II,MLA-III,LLA-I

Recommendation: Resample at the next service interval to monitor.

Comments: There is no indication of any contamination in the fluid. The condition of the fluid is suitable for further service.

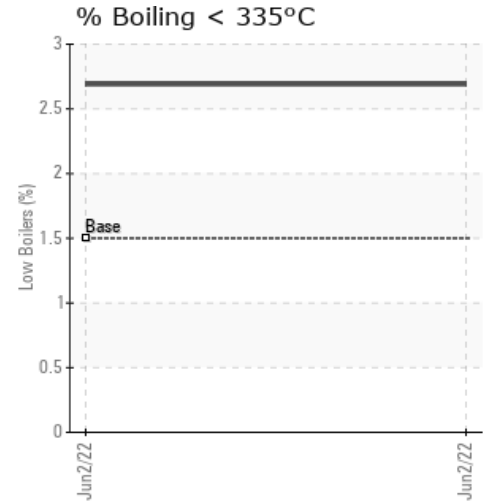
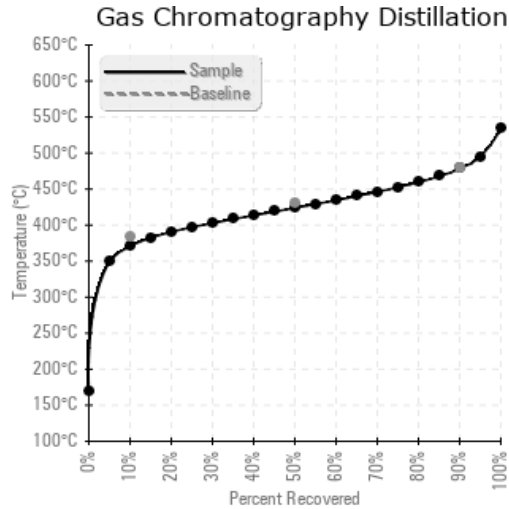
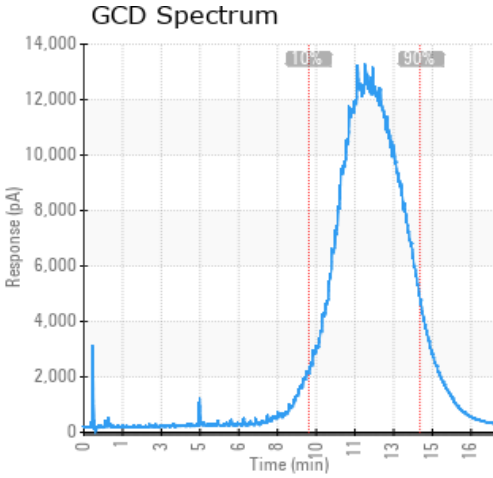
Sample Date	Received Date	Fluid Age	Sample Location	Flash Point (COC)	Water (KF)	Viscosity (40°C)	Acid Number	Solids	GCD 10%	GCD 50%	GCD 90%	GCD % < 335°C
	mm/dd/yy			°F/°C	ppm	cSt	mg/KOH/g	%wt	°F/°C	°F/°C	°F/°C	%
06/02/22	06/07/22	1.8y		428 / 220	19.7	33.8	0.63	0.058	699 / 371	795 / 424	893 / 478	2.69
Baseline Data				459 / 237		37.12	0.90		721 / 383	807 / 431	892 / 478	1.5





Sample Date	Iron	Chromium	Nickel	Aluminum	Copper	Lead	Tin	Cadmium	Silver	Vanadium	Silicon	Sodium	Potassium	Titanium	Molybdenum	Antimony	Manganese	Lithium	Boron	Magnesium	Calcium	Barium	Phosphorus	Zinc
06/02/22	12	0	0	0	0	0	0	0	0	0	0	0	1	0	0	0	0	0	0	0	0	3	13	3
Baseline Data			0	0						0			0	0				0	0					230

Elemental analysis results (above) in parts per million (ppm). [10,000 ppm = 1.0%]



Historical Comments
