

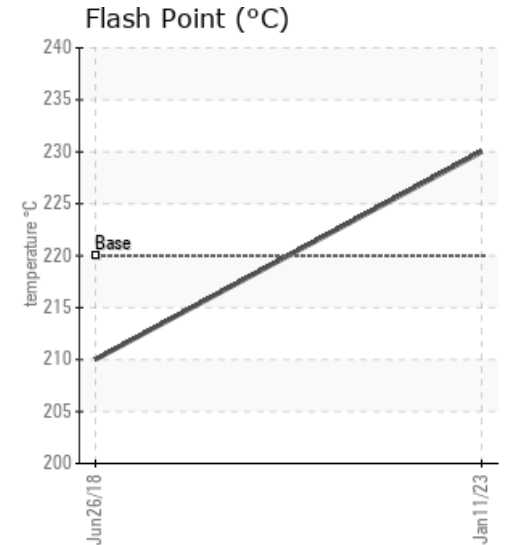
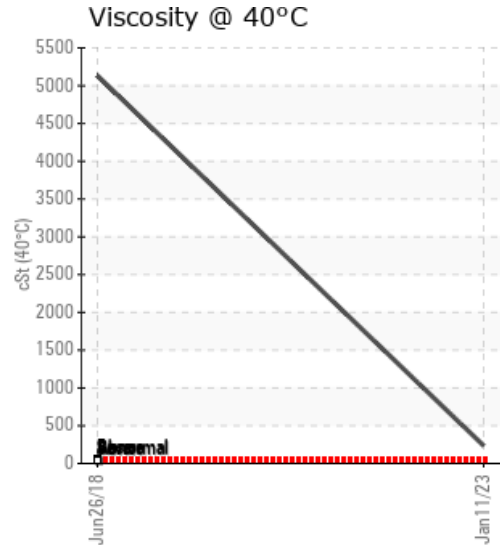
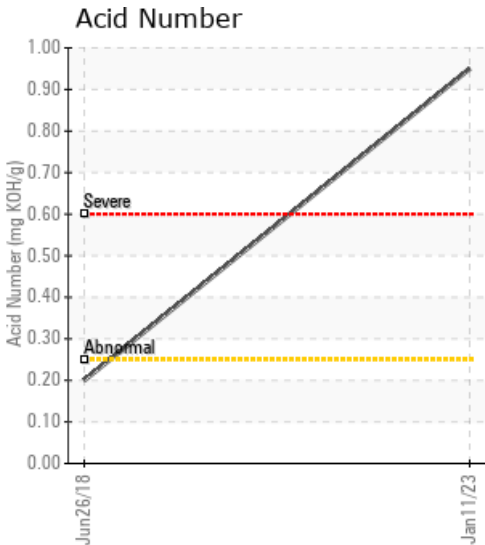
C.E.I.

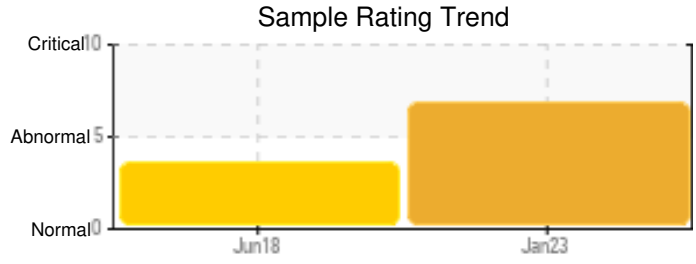
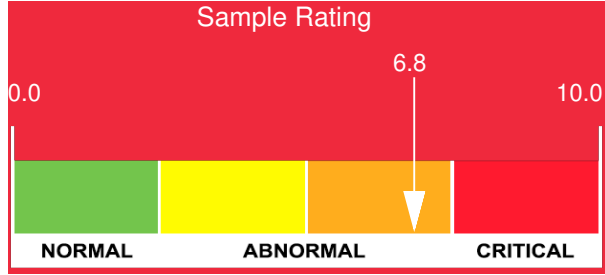
Customer: PTRHTF10199	System Information	Sample Information
DELTA TRADING LP 17731 MILLUX RD BAKERSFIELD, CA 93311 USA Attn: Manny Rodriguez Tel: (661)292-9220 E-Mail: mrodriguez@deltatradinglp.com	System Volume: 2500 gal Bulk Operating Temp: 450F / 232C Heating Source: Blanket: Fluid: CITGO AW HYDRAULIC ISO 46 Make: CEI ENTERPRISES INC	Lab No: 02535095 Analyst: Ron LeBlanc Sample Date: 01/11/23 Received Date: 01/24/23 Completed: 05/04/23 Ron LeBlanc Ronald.LeBlancSr@HFSinclair.com

Recommendation: HTF is severely oxidized and may need to be replaced from HT system. The lab results clearly show significant changes on physicals properties as AN, Viscosity and High presence Insolubles that supports previous statement. Further discussion with customer is needed to plan and proceed on flushing the oxidized HTF and clean the HT system.

Comments: Pentane Insolubles levels are severely high. Acid Number (AN) is severely high. Calcium ppm levels are severely high. Visc @ 40°C is severely high.

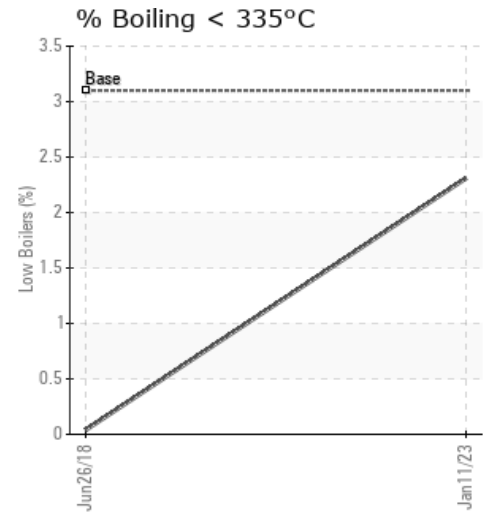
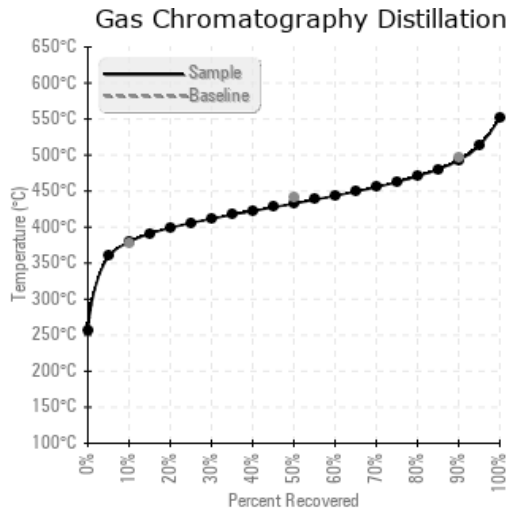
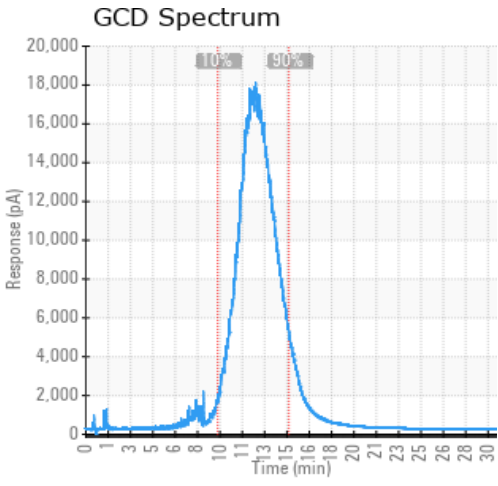
Sample Date	Received Date	Fluid Age	Sample Location	Flash Point (COC)	Water (KF)	Viscosity (40°C)	Acid Number	Solids	GCD 10%	GCD 50%	GCD 90%	GCD % < 335°C
	mm/dd/yy			°F/°C	ppm	cSt	mg/KOH/g	%wt	°F/°C	°F/°C	°F/°C	%
01/11/23	01/24/23	10.0y	discharge of heater	446 / 230	57.1	236	0.95	0.894	715 / 379	811 / 433	919 / 493	2.31
06/26/18	07/30/18	5.0y	OIL HEATER OUTLET	410 / 210	155.9	5132	0.20	6.09	693 / 367	783 / 417	893 / 479	0.04
Baseline Data				428 / 220		46.5			712 / 378	824 / 440	927 / 497	3.1





Sample Date	Iron	Chromium	Nickel	Aluminum	Copper	Lead	Tin	Cadmium	Silver	Vanadium	Silicon	Sodium	Potassium	Titanium	Molybdenum	Antimony	Manganese	Lithium	Boron	Magnesium	Calcium	Barium	Phosphorus	Zinc
01/11/23	118	0	0	0	0	0	2	0	0	0	0	2	0	0	0	0	3	0	0	0	266	0	1	2
06/26/18	69	0	0	0	0	0	0	0	0	0	1	1	0	0	0	0	1	0	0	1	244	0	4	4
Baseline Data			0	0						0			0	0					0				0	

Elemental analysis results (above) in parts per million (ppm). [10,000 ppm = 1.0%]



Historical Comments

06/26/18	Viscosity is severely high! Pentane insoluble and calcium are also severely high. Recommend drain, clean, flush and recharge system. Pentane Insolubles levels are severely high. Calcium ppm levels are severely high. Visc @ 40°C is severely high.

Petro-Canada makes no representation or warranty of any kind, either express or implied, as to the accuracy or completeness of the analysis and assumes no responsibility and shall have no liability whatsoever with respect to such analysis, or a party's use of it. Petro-Canada is a division of HollyFrontier Corporation.