

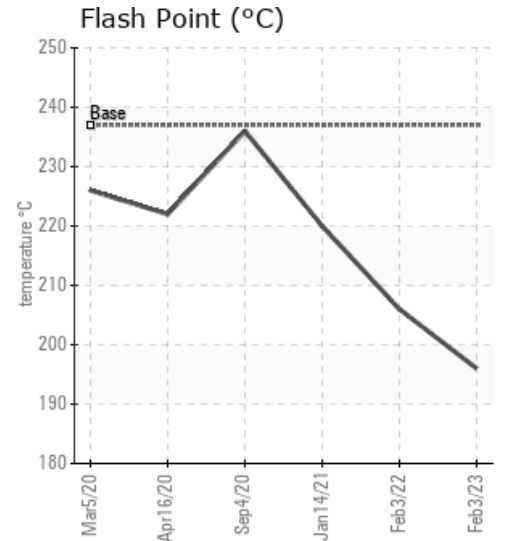
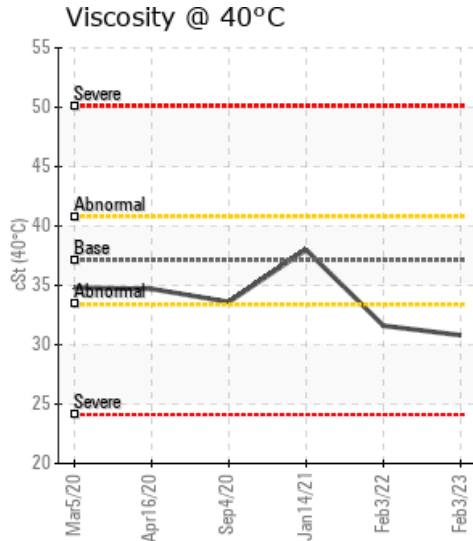
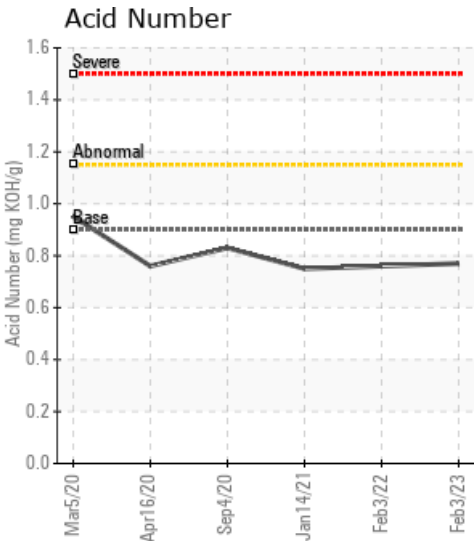
## ECOPTOH1450

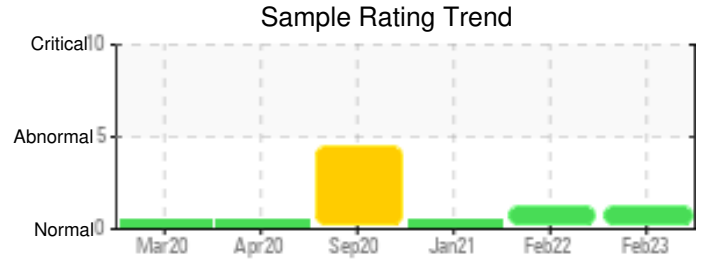
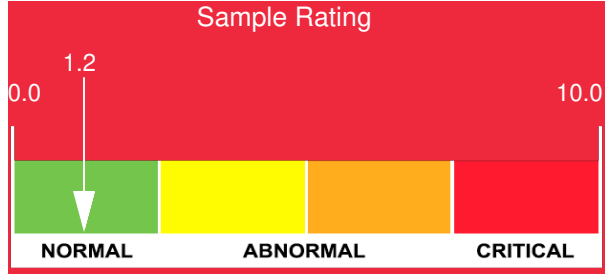
Customer: PTRHTF40037	System Information	Sample Information
KATJANG PEDIC P.C.I BV MARKT 30 ZEELAND SINT MAARTENSDIHK, ZEE NETHERLANDS Attn: Maintenance Manager Tel:	System Volume: 3200 ltr Bulk Operating Temp: 527F / 275C Heating Source: Blanket: Fluid: PETRO CANADA PURITY FG HEAT TRANSFER FLUID Make: ECO PROCESSTECHNIK	Lab No: 02538971 Analyst: Bill Quesnel CLS,OMA II,MLA-III,LLA-I Sample Date: 02/03/23 Received Date: 02/10/23 Completed: 02/15/23 Bill Quesnel CLS,OMA II,MLA-III,LLA-I

Recommendation: The flash point has decreased slightly. Fluid fit for further use. Send in new sample at next service interval.

Comments: Zinc ppm levels are abnormally high. COC Flash Point is marginally low.

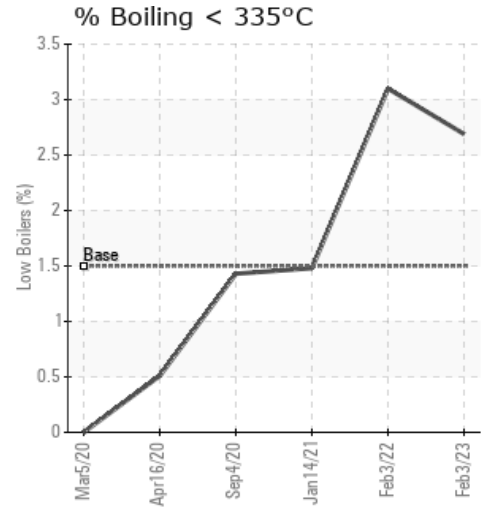
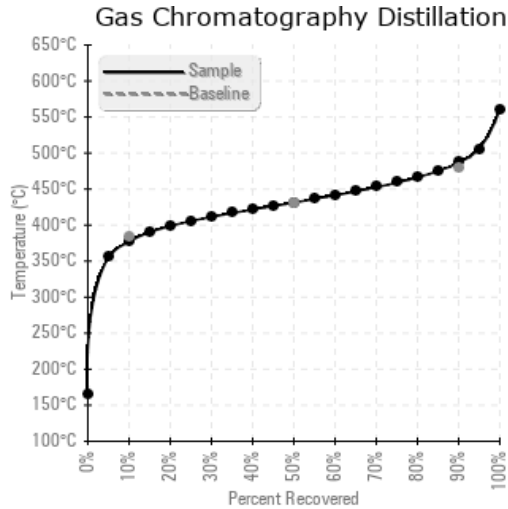
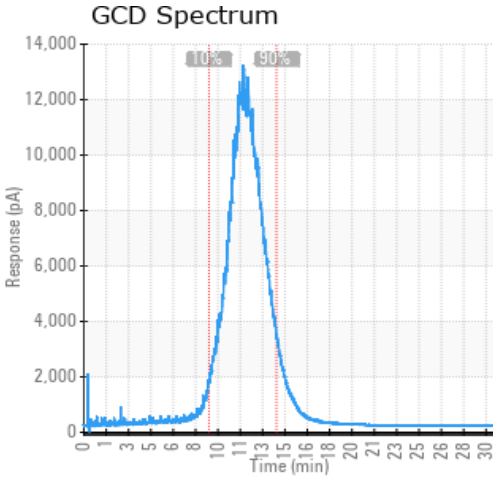
Sample Date	Received Date	Fluid Age	Sample Location	Flash Point (COC)	Water (KF)	Viscosity (40°C)	Acid Number	Solids	GCD 10%	GCD 50%	GCD 90%	GCD % < 335°C
	mm/dd/yy			°F/°C	ppm	cSt	mg/KOH/g	%wt	°F/°C	°F/°C	°F/°C	%
02/03/23	02/10/23	108.0m		385 / 196	4.4	30.8	0.77	0.103	711 / 377	808 / 431	908 / 487	2.69
02/03/22	02/08/22	24.0m		403 / 206	19.5	31.6	0.76	0.050	706 / 375	807 / 430	906 / 486	3.10
01/14/21	01/22/21	12.0m		428 / 220	25.9	38.0	0.75	0.147	716 / 380	809 / 432	906 / 486	1.48
09/04/20	09/15/20	54.0m		457 / 236	71.8	33.6	0.83	0.216	719 / 382	810 / 432	906 / 485	1.43
04/16/20	04/28/20	2.0m		432 / 222	13.1	34.7	0.76	0.096	725 / 385	811 / 433	904 / 485	0.51
Baseline Data				459 / 237		37.12	0.90		721 / 383	807 / 431	892 / 478	1.5





Sample Date	Iron	Chromium	Nickel	Aluminum	Copper	Lead	Tin	Cadmium	Silver	Vanadium	Silicon	Sodium	Potassium	Titanium	Molybdenum	Antimony	Manganese	Lithium	Boron	Magnesium	Calcium	Barium	Phosphorus	Zinc
02/03/23	2	0	0	0	0	0	0	0	0	0	0	0	0	0	0	0	0	0	0	0	0	0	4	33
02/03/22	7	0	0	0	0	0	0	0	0	0	0	0	0	0	0	0	0	0	1	0	0	0	11	36
01/14/21	7	0	0	0	0	0	0	0	0	0	0	0	0	0	0	0	0	0	0	0	0	0	14	32
09/04/20	21	0	0	0	1	0	0	0	0	0	2	0	0	0	0	0	0	0	0	0	0	2	42	121
04/16/20	5	0	0	0	0	0	0	0	0	0	0	0	0	0	0	0	0	0	0	0	0	0	14	0
Baseline Data			0	0						0			0	0				0	0				230	

Elemental analysis results (above) in parts per million (ppm). [10,000 ppm = 1.0%]



Historical Comments	
02/03/22	The flash point has decreased slightly. Fluid fit for further use. Send in new sample at next service interval. Zinc ppm levels are abnormally high. COC Flash Point is marginally low.
01/14/21	Fluid fit for further use. Send in new sample at next service interval. Zinc ppm levels are abnormally high.
09/04/20	Possible contamination (Top up) with different, not suitable fluid. Try to figure out reason for abnormal high TAN and Zinc parameters. Other properties are in a proper manner and if differing values are explainable, fluid is suitable for further use. Acid Number (AN) is severely high. Zinc ppm levels are severely high.
04/16/20	All parameters meet specification, fluid fit for further use and re-sample at normal frequency

Petro-Canada makes no representation or warranty of any kind, either express or implied, as to the accuracy or completeness of the analysis and assumes no responsibility and shall have no liability whatsoever with respect to such analysis, or a party's use of it. Petro-Canada is a division of HollyFrontier Corporation.