

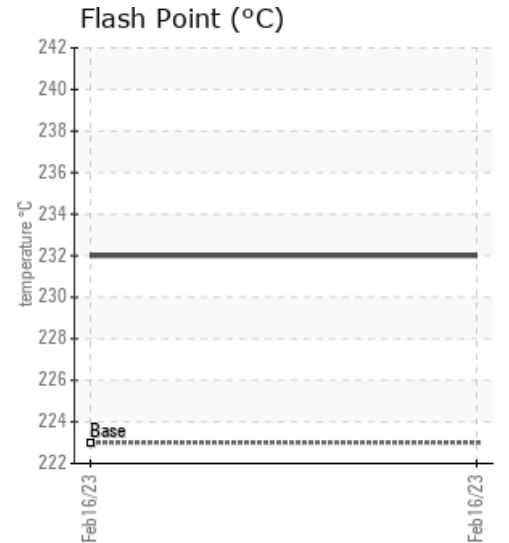
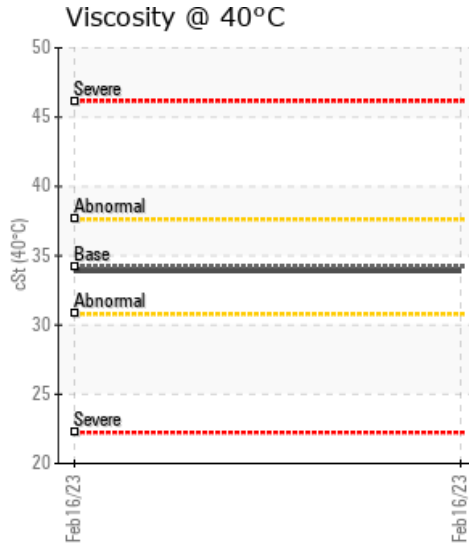
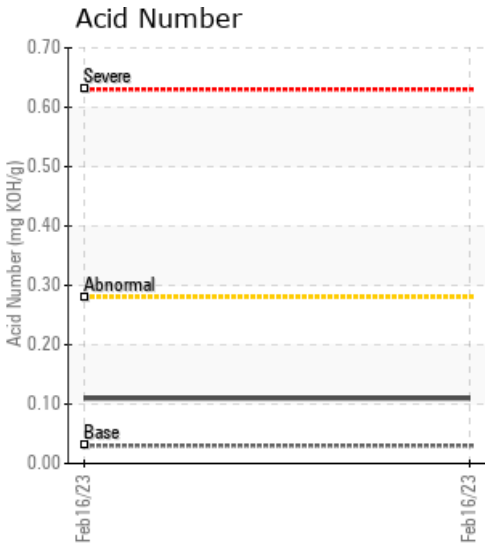
## PTOH 2000/39

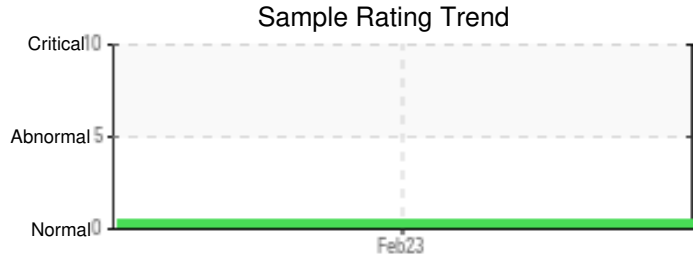
Customer: PTRHTF40089	System Information	Sample Information
PLATVIS HOLLAND BV HAMERSTRAAT 7 EDAM, NETHERLANDS Attn: Maintenance Manager Tel: E-Mail: w.snijers@klt.nl	System Volume: 4000 ltr Bulk Operating Temp: 500F / 260C Heating Source: Blanket: Fluid: PETRO CANADA PETRO-THERM Make: ECO PROZESSTECHNIK	Lab No: 02541091 Analyst: Bill Quesnel CLS,OMA II,MLA-III,LLA-I Sample Date: 02/16/23 Received Date: 02/22/23 Completed: 02/28/23 Bill Quesnel CLS,OMA II,MLA-III,LLA-I

Recommendation: Resample at the next service interval to monitor.

Comments: The condition of the fluid is suitable for further service.

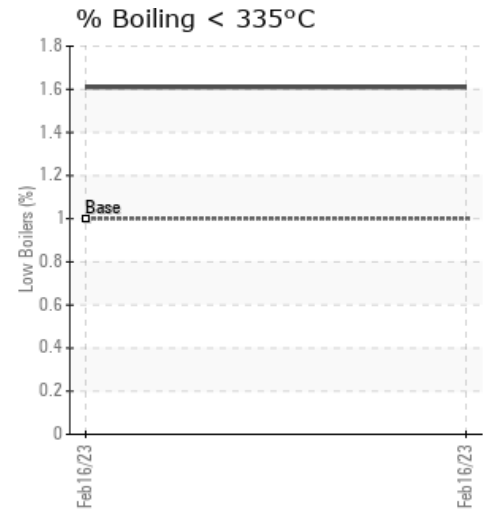
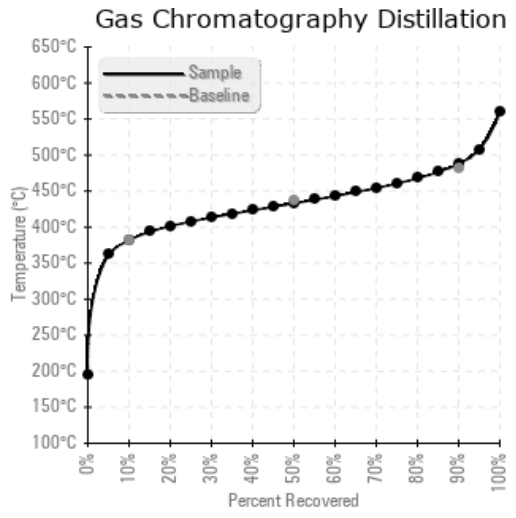
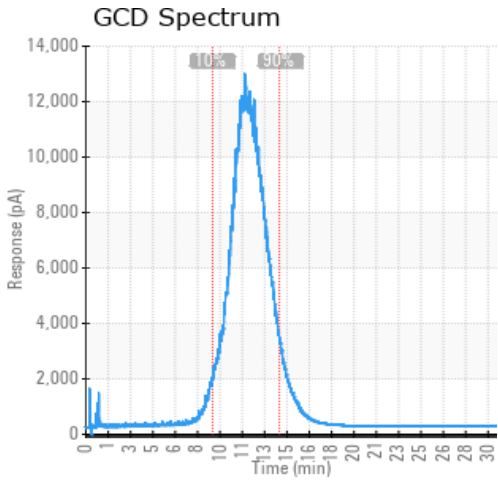
Sample Date	Received Date	Fluid Age	Sample Location	Flash Point (COC)	Water (KF)	Viscosity (40°C)	Acid Number	Solids	GCD 10%	GCD 50%	GCD 90%	GCD % < 335°C
	mm/dd/yy			°F/°C	ppm	cSt	mg/KOH/g	%wt	°F/°C	°F/°C	°F/°C	%
02/16/23	02/22/23	1.5y		450 / 232	8.8	33.9	0.11	0.027	719 / 382	811 / 433	910 / 488	1.61
Baseline Data				433 / 223		34.2	0.03		720 / 382	817 / 436	900 / 482	1.00





Sample Date	Iron	Chromium	Nickel	Aluminum	Copper	Lead	Tin	Cadmium	Silver	Vanadium	Silicon	Sodium	Potassium	Titanium	Molybdenum	Antimony	Manganese	Lithium	Boron	Magnesium	Calcium	Barium	Phosphorus	Zinc
02/16/23	2	0	0	0	0	0	0	0	0	0	0	0	0	0	0	0	0	0	0	0	0	0	0	0
<b>Baseline Data</b>			0	0						0			0	0					0				0	

Elemental analysis results (above) in parts per million (ppm). [10,000 ppm = 1.0%]



### Historical Comments


Petro-Canada makes no representation or warranty of any kind, either express or implied, as to the accuracy or completeness of the analysis and assumes no responsibility and shall have no liability whatsoever with respect to such analysis, or a party's use of it. Petro-Canada is a division of HollyFrontier Corporation.