

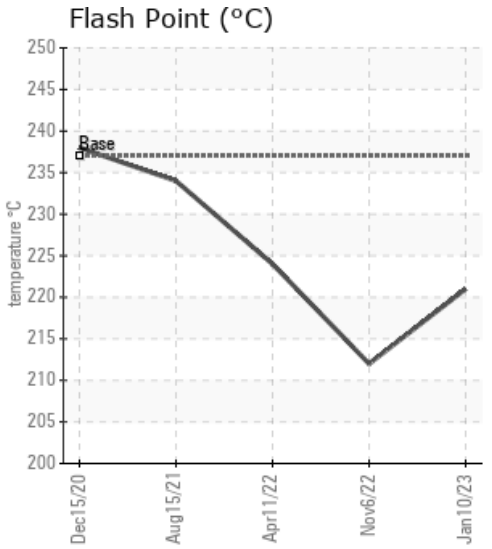
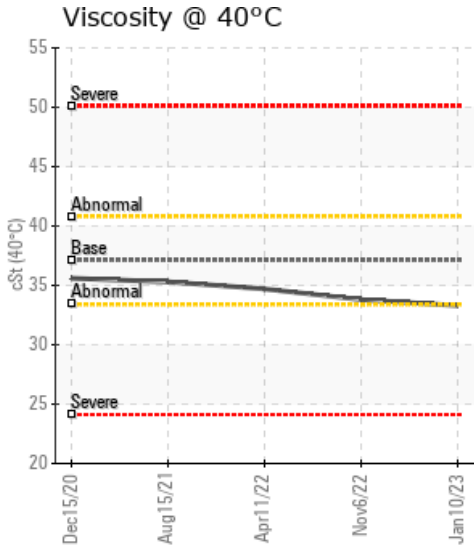
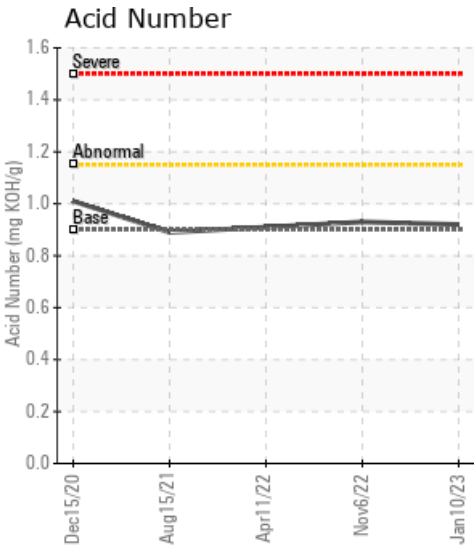
GFN THAILAND FP2

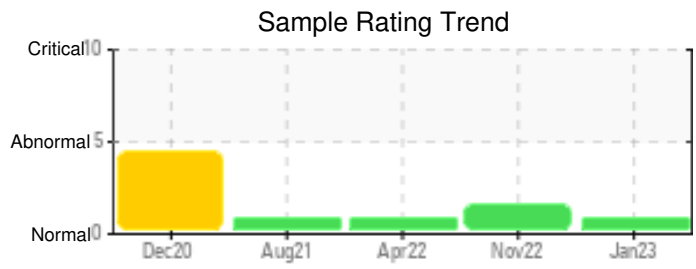
Customer: PTRHTF60010	System Information	Sample Information
SYNLUBE INTERNATIONAL CO LTD 76/1 MOO.7 THACHIN MUANG SAMUTSAKHON, 74000 THAILAND Attn: CHERNPORN CHOBKUI Tel: 034421290 E-Mail: chernporn@synlube.co.th	System Volume: 16000 ltr Bulk Operating Temp: 536F / 280C Heating Source: Blanket: Fluid: PETRO CANADA PURITY FG HEAT TRANSFER FLUID Make: HOVEL	Lab No: 02541889 Analyst: Bill Quesnel CLS,OMA II,MLA-III,LLA-I Sample Date: 01/10/23 Received Date: 02/27/23 Completed: 03/09/23 Bill Quesnel CLS,OMA II,MLA-III,LLA-I

Recommendation: Resample at the next service interval to monitor.

Comments: There is no indication of any contamination in the fluid. (GCD) 90% Distillation Point is abnormally high. The condition of the fluid is acceptable for the time in service.

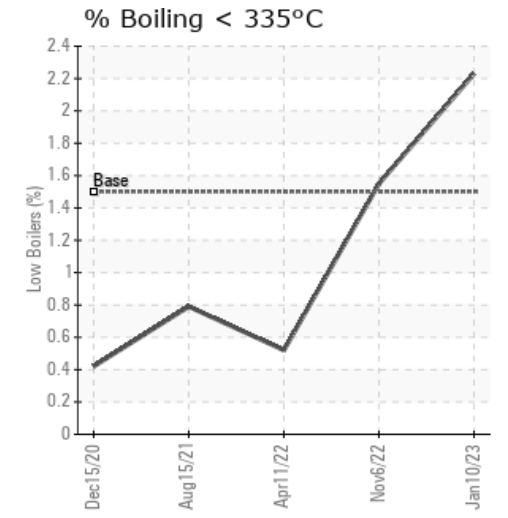
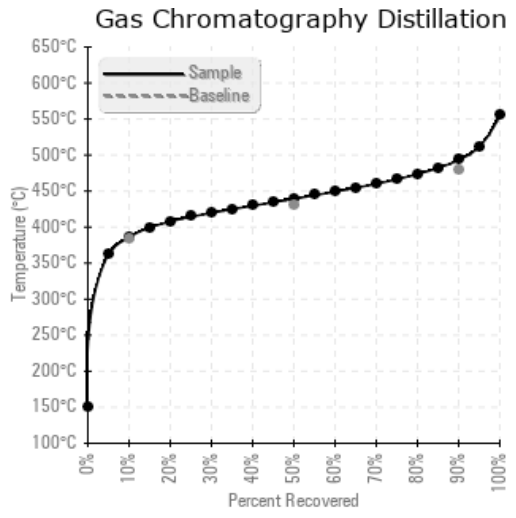
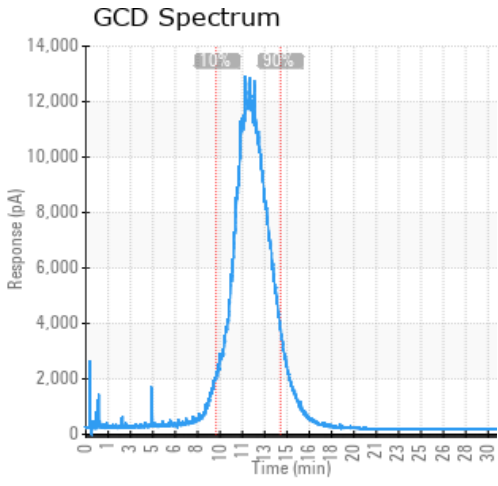
Sample Date	Received Date	Fluid Age	Sample Location	Flash Point (COC)	Water (KF)	Viscosity (40°C)	Acid Number	Solids	GCD 10%	GCD 50%	GCD 90%	GCD % < 335°C
	mm/dd/yy			°F/°C	ppm	cSt	mg/KOH/g	%wt	°F/°C	°F/°C	°F/°C	%
01/10/23	02/27/23	27.0m		430 / 221	4.3	33.3	0.92	0.056	727 / 386	823 / 439	920 / 493	2.23
11/06/22	11/15/22	25.0m	SUPPLY RETURN	414 / 212	57.0	33.8	0.93	0.206	732 / 389	823 / 439	920 / 493	1.55
04/11/22	04/27/22	19.0m		435 / 224	27.8	34.7	0.91	0.051	737 / 392	824 / 440	922 / 495	0.52
08/15/21	09/17/21	12.0m	supply and return	453 / 234	22.7	35.3	0.89	0.019	740 / 393	824 / 440	919 / 493	0.79
12/15/20	02/26/21	3.0m	Supply and return	460 / 238	4173.5	35.6	1.01	0.153	738 / 392	825 / 440	922 / 494	0.42
Baseline Data				459 / 237		37.12	0.90		721 / 383	807 / 431	892 / 478	1.5





Sample Date	Iron	Chromium	Nickel	Aluminum	Copper	Lead	Tin	Cadmium	Silver	Vanadium	Silicon	Sodium	Potassium	Titanium	Molybdenum	Antimony	Manganese	Lithium	Boron	Magnesium	Calcium	Barium	Phosphorus	Zinc
01/10/23	1	0	0	0	0	0	0	0	0	0	0	0	0	0	0	0	0	0	0	0	0	0	8	0
11/06/22	128	0	0	0	0	0	0	0	0	0	0	0	0	0	0	0	2	0	0	0	0	0	19	11
04/11/22	3	0	0	0	0	0	0	0	0	0	0	0	0	0	0	0	0	0	0	0	0	0	13	0
08/15/21	3	0	0	0	0	0	0	0	0	0	0	0	0	0	0	0	0	0	0	0	0	0	14	0
12/15/20	7	0	0	0	0	0	0	0	0	0	4	0	0	0	0	0	0	0	0	0	0	0	32	0
Baseline Data			0	0						0			0	0				0	0				230	

Elemental analysis results (above) in parts per million (ppm). [10,000 ppm = 1.0%]



Historical Comments	
11/06/22	The fluid is suitable for service. Resample at the next service interval to monitor. Iron ppm levels are abnormal. The low ferrous density (PQ) index indicates the wear metal levels are due to corrosion. (GCD) 90% Distillation Point is abnormally high.
04/11/22	Resample at the next service interval to monitor. There is no indication of any contamination in the fluid. (GCD) 90% Distillation Point is abnormally high. The condition of the fluid is acceptable for the time in service.
08/15/21	All parameters meet fluid expectations, fit for further use. Please resample at normal frequency. (GCD) 90% Distillation Point is marginally high.
12/15/20	Product contaminated with water that can affect performance and system adversely. Are the site able to remove the water? Can the water contamination leak be identified. Is it a new system and not been cleared after pressure test. Recommend to find the source of the contamination (leak or left in system), ensure it cannot continue. Try and remove by desorbent filtration if possible. If it cannot be removed the oil should be changed Water contamination levels are severely high. Water contamination levels are severely high.. ppm Water contamination levels are severely high. (GCD) 90% Distillation Point is abnormally high.

Petro-Canada makes no representation or warranty of any kind, either express or implied, as to the accuracy or completeness of the analysis and assumes no responsibility and shall have no liability whatsoever with respect to such analysis, or a party's use of it. Petro-Canada is a division of HollyFrontier Corporation.