

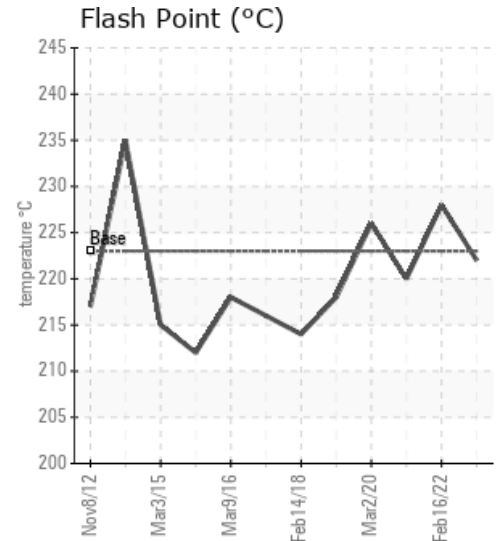
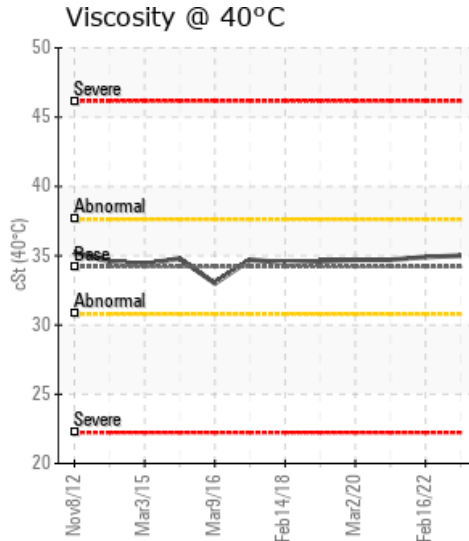
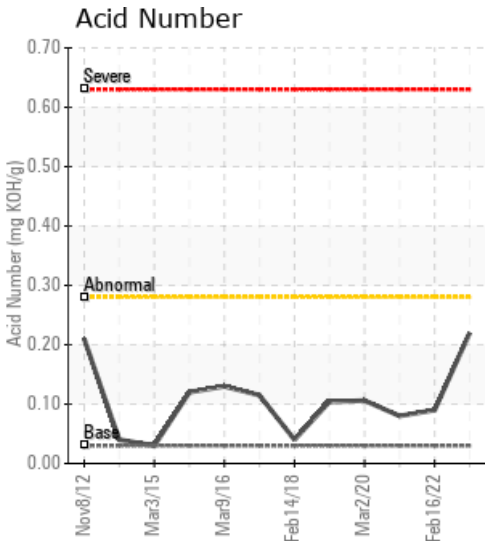
## UPPER TANK FARM

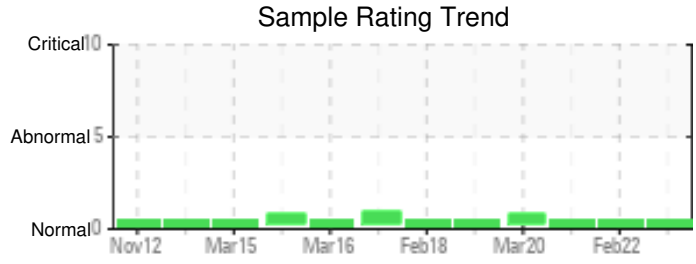
Customer: PTRHTF10125	System Information	Sample Information
TRANSMONTAIGNE 700 RIVER ROAD COVINGTON, KY 41017 USA Attn: Dwayne Gray Tel: (859)331-0900 E-Mail: dgray@transmontaigne.com	System Volume: 2500 gal Bulk Operating Temp: 300F / 149C Heating Source: Blanket: Fluid: PETRO CANADA PETRO-THERM Make: HEATEC INC	Lab No: 02545906 Analyst: Joe Goecke Sample Date: 02/21/23 Received Date: 03/16/23 Completed: 03/22/23 Joe Goecke Joe.goecke@HFSinclair.com

Recommendation: All Parameters are within operating limits and show no degradation. Continue to use product and resample at next scheduled interval

Comments:

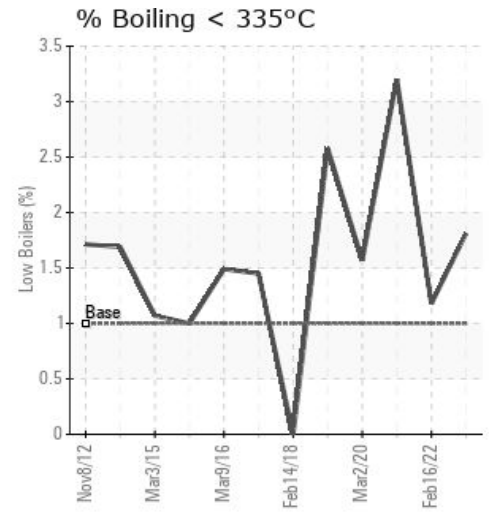
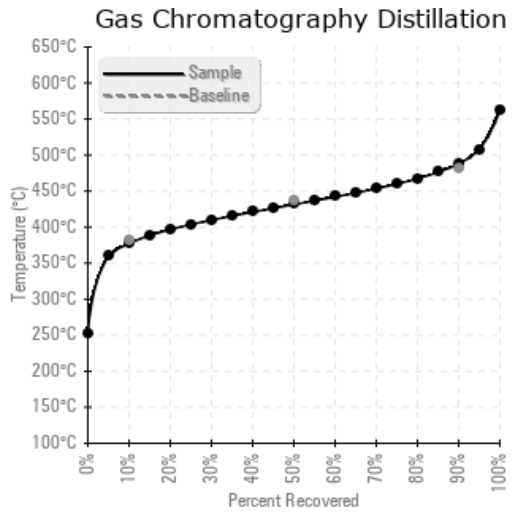
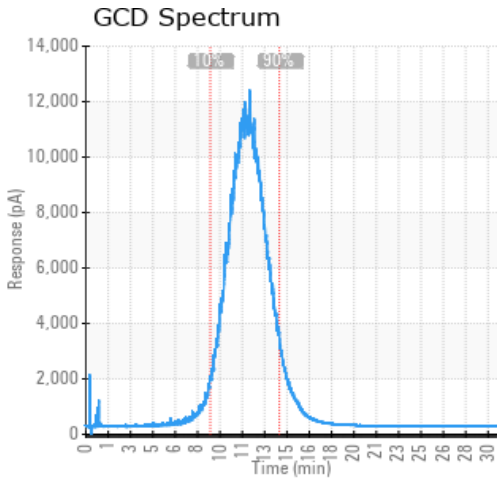
Sample Date	Received Date	Fluid Age	Sample Location	Flash Point (COC)	Water (KF)	Viscosity (40°C)	Acid Number	Solids	GCD 10%	GCD 50%	GCD 90%	GCD % < 335°C
	mm/dd/yy			°F/°C	ppm	cSt	mg/KOH/g	%wt	°F/°C	°F/°C	°F/°C	%
02/21/23	03/16/23	11.0y	booster pump	432 / 222	0.00	35.0	0.22	0.067	711 / 377	809 / 431	910 / 488	1.81
02/16/22	03/17/22	9.4y		442 / 228	17.5	34.9	0.09	0.040	714 / 379	810 / 432	910 / 488	1.18
03/08/21	03/17/21	8.4y	booster pump	428 / 220	22.3	34.7	0.08	0.094	694 / 368	795 / 424	906 / 486	3.20
03/02/20	03/09/20	7.3y		439 / 226	8.4	34.7	0.106	0.054	705 / 374	818 / 437	929 / 498	1.57
02/26/19	02/27/19	6.3y	BOOSTER PUMP	424 / 218	4.8	34.6	0.104	0.050	687 / 364	789 / 420	896 / 480	2.58
Baseline Data				433 / 223		34.2	0.03		720 / 382	817 / 436	900 / 482	1.00





Sample Date	Iron	Chromium	Nickel	Aluminum	Copper	Lead	Tin	Cadmium	Silver	Vanadium	Silicon	Sodium	Potassium	Titanium	Molybdenum	Antimony	Manganese	Lithium	Boron	Magnesium	Calcium	Barium	Phosphorus	Zinc
02/21/23	4	0	0	0	0	0	0	0	0	0	0	0	0	0	0	0	0	0	0	0	0	0	32	0
02/16/22	11	0	0	0	1	0	0	0	0	0	1	1	0	0	0	0	0	0	0	0	1	1	34	0
03/08/21	16	0	0	0	1	0	0	0	0	0	2	2	0	0	0	0	0	0	0	0	2	2	34	0
03/02/20	1	0	0	0	0	0	0	0	0	0	3	0	0	0	0	0	0	0	0	0	0	0	45	0
02/26/19	2	0	0	0	0	0	0	0	0	0	3	0	0	0	0	0	0	0	0	0	0	0	42	0
Baseline Data			0	0						0			0	0					0				0	

Elemental analysis results (above) in parts per million (ppm). [10,000 ppm = 1.0%]



Historical Comments	
02/16/22	No issues with current sample. Continue use and resample next year.
03/08/21	Sample is in great condition continue to use and sample at next scheduled interval
03/02/20	Sample is in excellent condition. Continue to use and resample at next regularly scheduled interval. (GCD) 90% Distillation Point is abnormally high.
02/26/19	Oil is in very good condition. Slight increase in low boilers but well within limits of operation. Flash point and viscosity are excellent. Continue to use and resample at next scheduled interval.

Petro-Canada makes no representation or warranty of any kind, either express or implied, as to the accuracy or completeness of the analysis and assumes no responsibility and shall have no liability whatsoever with respect to such analysis, or a party's use of it. Petro-Canada is a division of HollyFrontier Corporation.