

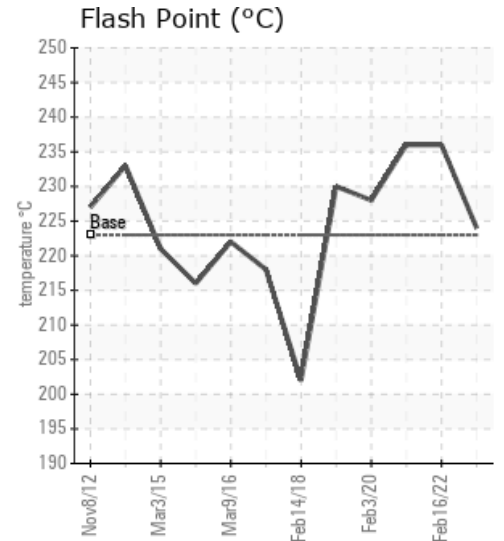
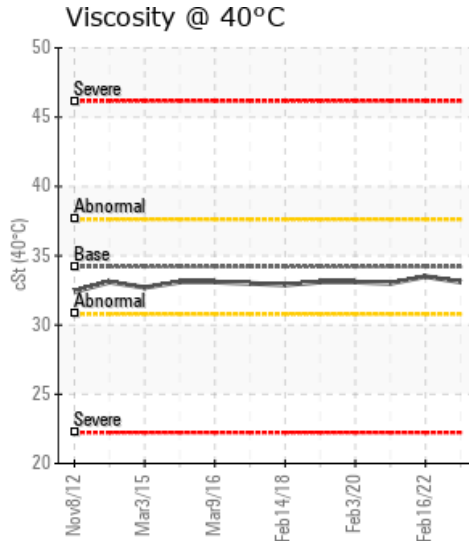
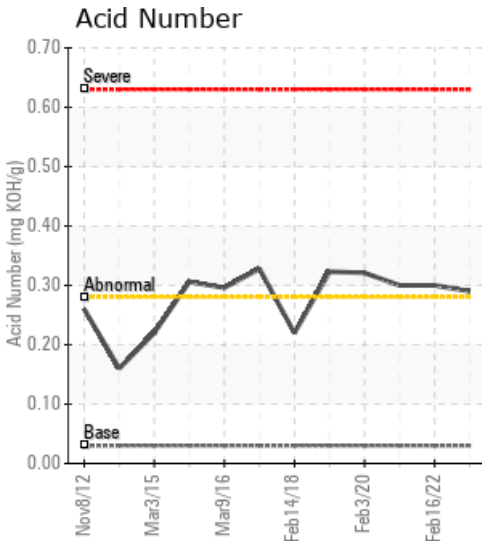
## LOWER TANK FARM

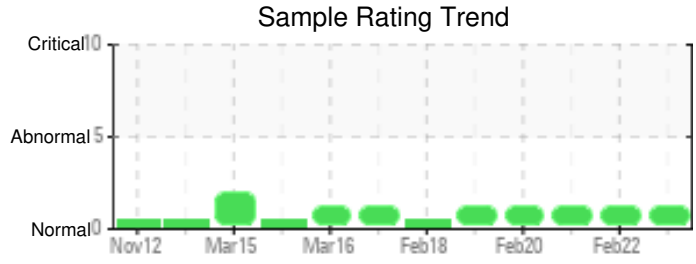
Customer: PTRHTF10125	System Information	Sample Information
TRANSMONTAIGNE 700 RIVER ROAD COVINGTON, KY 41017 USA Attn: Dwayne Gray Tel: (859)331-0900 E-Mail: dgray@transmontaigne.com	System Volume: 2500 gal Bulk Operating Temp: 300F / 149C Heating Source: Blanket: Fluid: PETRO CANADA PETRO-THERM Make: AMERICAN HEATING	Lab No: 02545907 Analyst: Joe Goecke Sample Date: 02/21/23 Received Date: 03/16/23 Completed: 03/20/23 Joe Goecke Joe.goecke@HFSinclair.com

Recommendation: Sample does not show any signs of degradation. Continue to use and resample at next scheduled interval.

Comments: Acid Number (AN) is abnormally high.

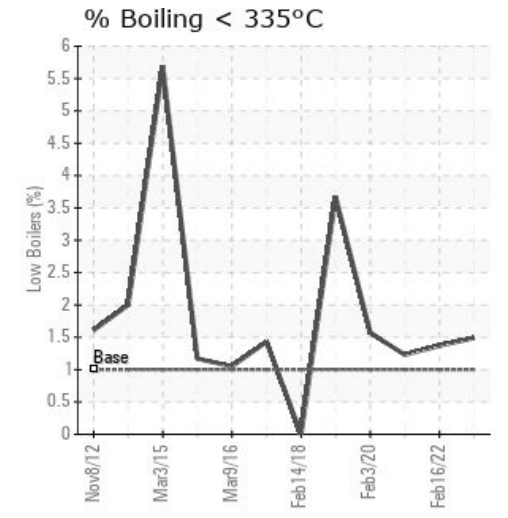
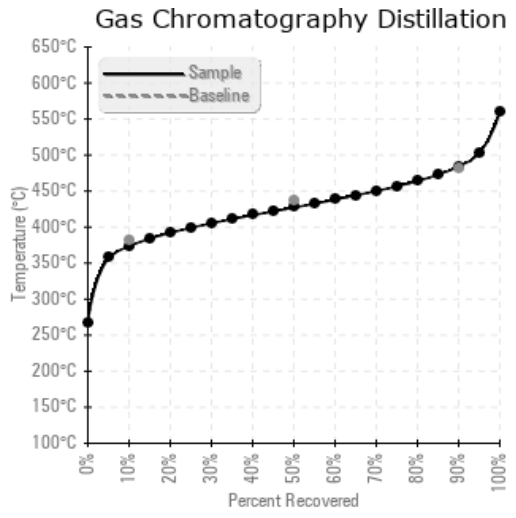
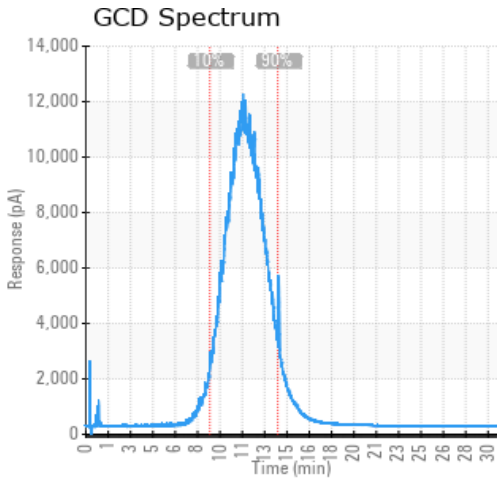
Sample Date	Received Date	Fluid Age	Sample Location	Flash Point (COC)	Water (KF)	Viscosity (40°C)	Acid Number	Solids	GCD 10%	GCD 50%	GCD 90%	GCD % < 335°C
	mm/dd/yy			°F/°C	ppm	cSt	mg/KOH/g	%wt	°F/°C	°F/°C	°F/°C	%
02/21/23	03/16/23	11.0y		435 / 224	0.00	33.1	0.29	0.069	704 / 373	801 / 427	904 / 484	1.49
02/16/22	03/17/22	9.4y		457 / 236	0.00	33.5	0.30	0.065	704 / 373	800 / 427	902 / 483	1.37
03/07/21	03/17/21	8.4y		457 / 236	1.9	33.0	0.30	0.107	699 / 370	787 / 419	884 / 473	1.23
02/03/20	03/09/20	7.3y	BOOSTEN PUMP	442 / 228	0.00	33.1	0.321	0.077	701 / 372	812 / 433	917 / 492	1.57
02/26/19	02/27/19	6.3y	BOOSTER PUMP	446 / 230	0.5	33.1	0.323	0.059	674 / 357	775 / 413	882 / 472	3.67
Baseline Data				433 / 223		34.2	0.03		720 / 382	817 / 436	900 / 482	1.00





Sample Date	Iron	Chromium	Nickel	Aluminum	Copper	Lead	Tin	Cadmium	Silver	Vanadium	Silicon	Sodium	Potassium	Titanium	Molybdenum	Antimony	Manganese	Lithium	Boron	Magnesium	Calcium	Barium	Phosphorus	Zinc	
02/21/23	1	0	0	0	0	0	0	0	0	0	2	0	0	0	0	0	0	0	0	0	0	0	231	0	
02/16/22	2	0	0	0	0	0	0	0	0	0	2	1	2	0	0	0	0	0	0	0	0	0	0	218	0
03/07/21	3	0	0	0	0	0	0	0	0	0	2	2	0	0	0	0	0	0	0	0	1	0	198	0	
02/03/20	4	0	0	0	0	0	0	0	0	0	2	1	0	0	0	0	0	0	0	0	0	0	0	226	0
02/26/19	3	0	0	0	0	0	0	0	0	0	2	3	0	0	0	0	0	0	0	0	2	0	208	0	
Baseline Data			0	0						0		0	0					0				0			

Elemental analysis results (above) in parts per million (ppm). [10,000 ppm = 1.0%]



Historical Comments	
02/16/22	All parameters are consistent with last sample. continue to use and resample at next scheduled interval. Acid Number (AN) is abnormally high.
03/07/21	Acid number is high but in line with where it has been. I would suggest a partial exchange of this oil since it has been high for a while. All other parameters look great and can be continued to be used as planned. Acid Number (AN) is abnormally high.
02/03/20	Product looks very good. Minimal acid build up with all other numbers in line. Continue to use and resample at next scheduled interval. Acid Number (AN) is abnormally high.
02/26/19	Flash point, low boilers and viscosity all look great. No issues with oil, continue to use and resample at next scheduled interval. Acid Number (AN) is abnormally high.

Petro-Canada makes no representation or warranty of any kind, either express or implied, as to the accuracy or completeness of the analysis and assumes no responsibility and shall have no liability whatsoever with respect to such analysis, or a party's use of it. Petro-Canada is a division of HollyFrontier Corporation.