

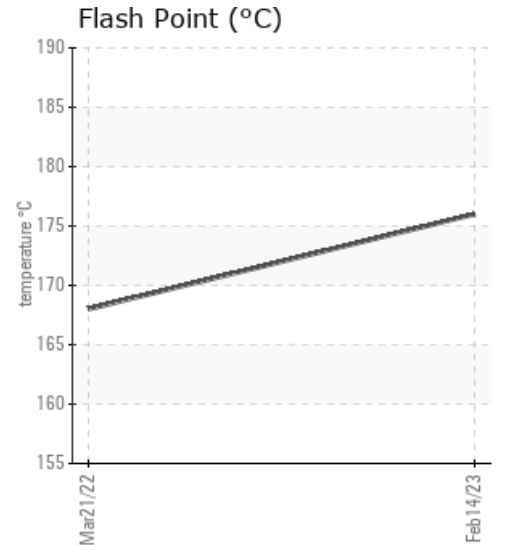
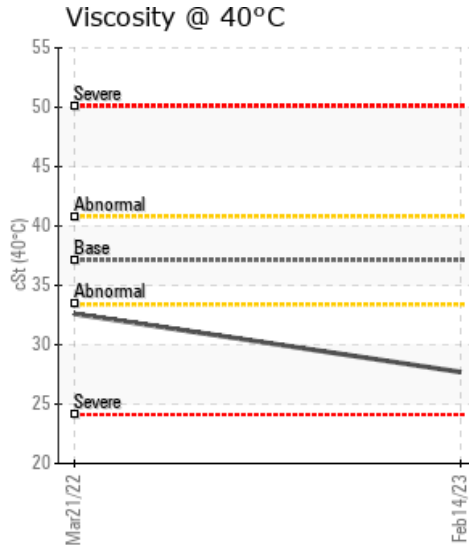
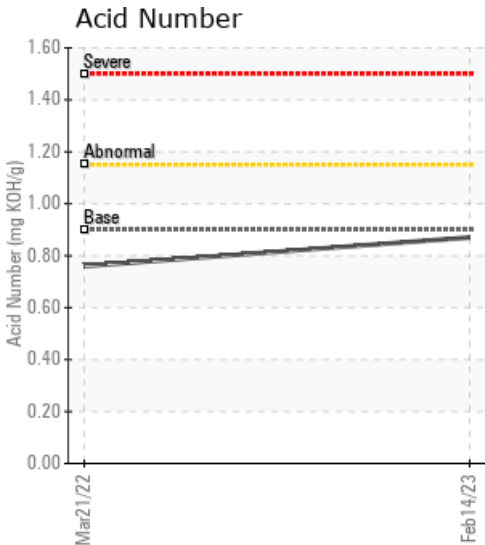
## [SC. INTERSNACK ROMANIA SRL] PC2000 CHIPS AURA AKL7504G

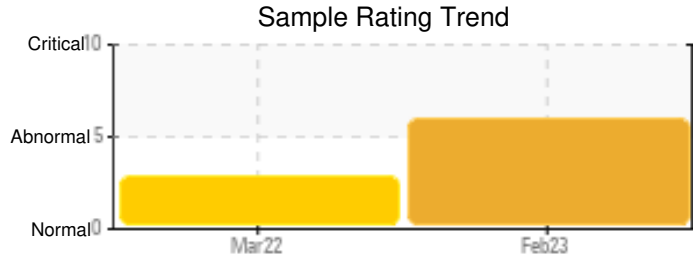
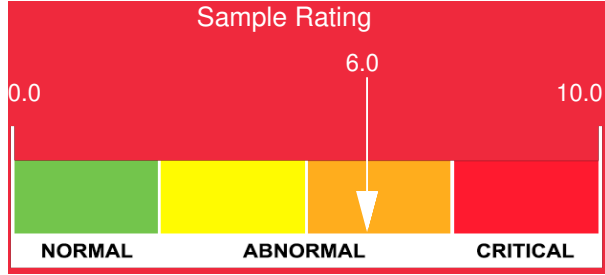
Customer: PTRHTF40121	System Information	Sample Information
S.C Brenntag SRL Street Garii No. 1 Chiajna Ilfov, 077040 Romania Attn: Remina Feifer Tel: 1(407)451-2327 E-Mail: remina.feifer@brenntag.ro	System Volume: 17000 ltr Bulk Operating Temp: 545F / 285C Heating Source: Blanket: Fluid: PETRO CANADA PURITY FG HEAT TRANSFER FLUID Make: AURA	Lab No: 02547832 Analyst: Bill Quesnel CLS,OMA II,MLA-III,LLA-I Sample Date: 02/14/23 Received Date: 03/27/23 Completed: 04/04/23 Bill Quesnel CLS,OMA II,MLA-III,LLA-I

Recommendation: We recommend that you vent the expansion tank to remove low boilers which assists in restoring the flash point of the fluid. We recommend an early resample (6 months) to monitor this condition.

Comments: (GCD) 10% Distillation Point is severely low. COC Flash Point is severely low. (GCD) % < 335°C is abnormally high. Visc @ 40°C is abnormally low.

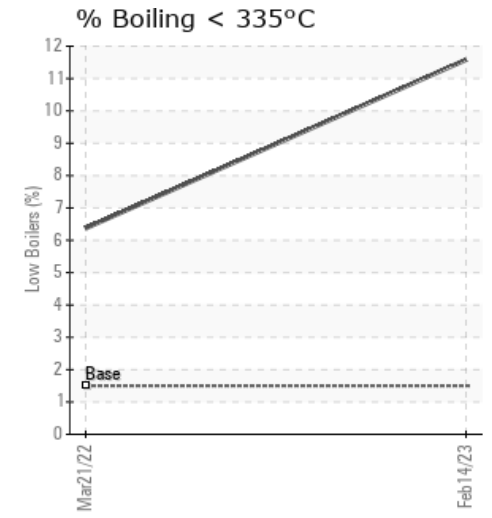
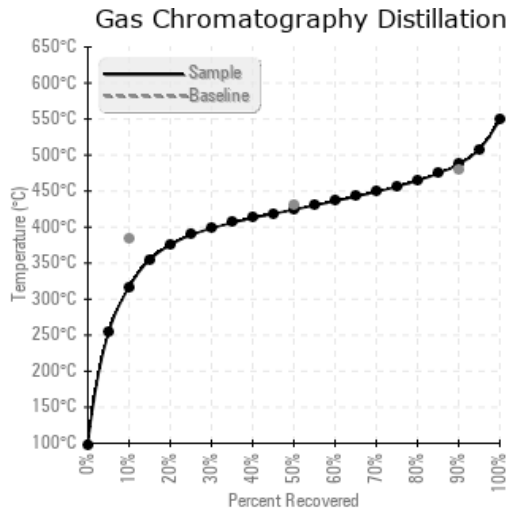
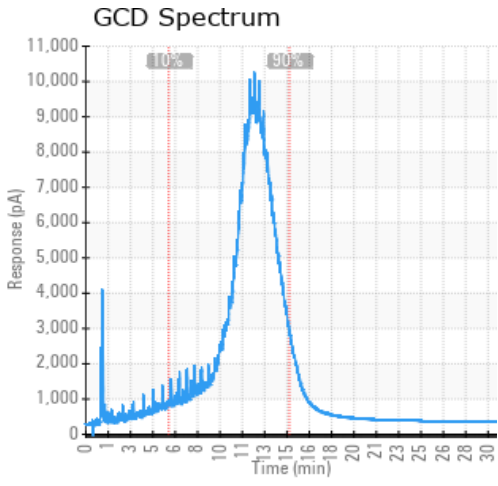
Sample Date	Received Date	Fluid Age	Sample Location	Flash Point (COC)	Water (KF)	Viscosity (40°C)	Acid Number	Solids	GCD 10%	GCD 50%	GCD 90%	GCD % < 335°C
	mm/dd/yy			°F/°C	ppm	cSt	mg/KOH/g	%wt	°F/°C	°F/°C	°F/°C	%
02/14/23	03/27/23	3.0y	DROIU VALVE	349 / 176	49.8	27.7	0.87	0.192	602 / 317	796 / 424	909 / 487	11.58
03/21/22	09/27/22	2.0y	DRAIN VALVE	334 / 168	25.0	32.6	0.76	0.135	678 / 359	803 / 429	911 / 488	6.37
Baseline Data				459 / 237		37.12	0.90		721 / 383	807 / 431	892 / 478	1.5





Sample Date	Iron	Chromium	Nickel	Aluminum	Copper	Lead	Tin	Cadmium	Silver	Vanadium	Silicon	Sodium	Potassium	Titanium	Molybdenum	Antimony	Manganese	Lithium	Boron	Magnesium	Calcium	Barium	Phosphorus	Zinc
02/14/23	3	0	0	0	0	0	0	0	0	0	0	0	1	0	0	0	0	0	0	0	0	0	3	0
03/21/22	0	0	0	0	0	0	0	0	0	0	0	0	0	0	0	0	0	0	0	0	0	0	6	0
Baseline Data			0	0						0			0	0				0	0				230	

Elemental analysis results (above) in parts per million (ppm). [10,000 ppm = 1.0%]



**Historical Comments**

03/21/22	The COC Flash Point is very low. Recommend venting the expansion tank to remove light ends. Resample in 6 months to monitor. COC Flash Point is severely low. (GCD) 90% Distillation Point is marginally high.
----------	--

Petro-Canada makes no representation or warranty of any kind, either express or implied, as to the accuracy or completeness of the analysis and assumes no responsibility and shall have no liability whatsoever with respect to such analysis, or a party's use of it. Petro-Canada is a division of HollyFrontier Corporation.