

# HTU72

**Customer: PTRHTF10194**  
 HEXCEL  
 6700 W 5400 S  
 SALT LAKE CITY, UT 84118 US  
 Attn: Ted Housel  
 Tel: (801)201-2083  
 E-Mail: ted.housel@hexcel.com

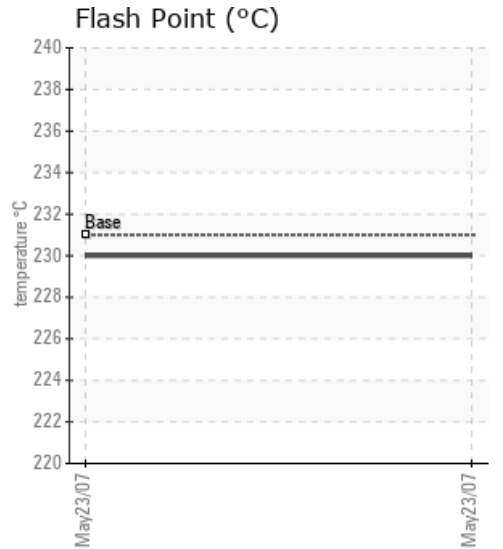
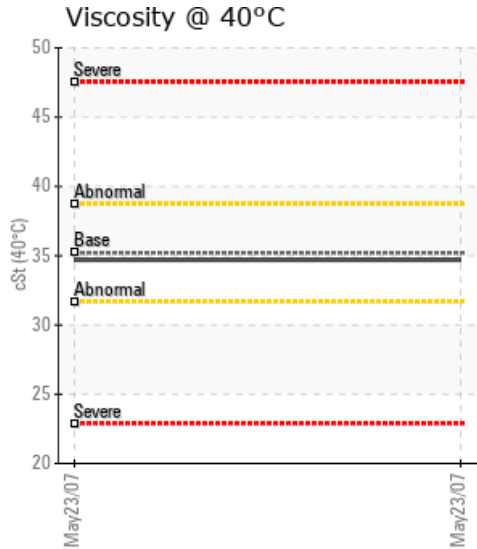
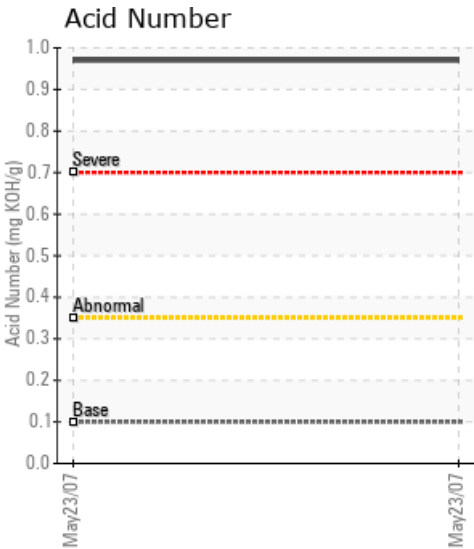
**System Information**  
 System Volume: 40 gal  
 Bulk Operating Temp: 428F / 220C  
 Heating Source:  
 Blanket:  
 Fluid: PETRO CANADA CALFLO HTF  
 Make: HEXCEL

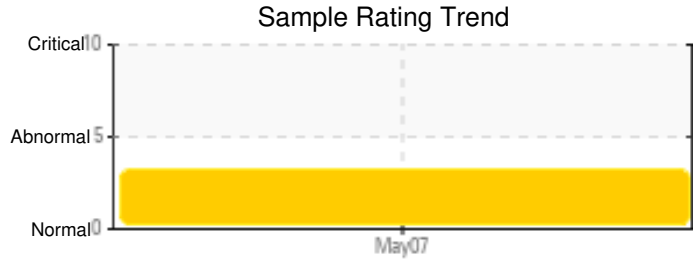
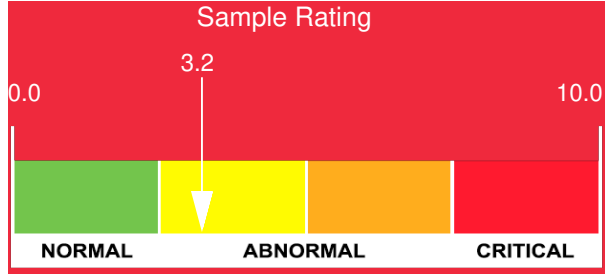
**Sample Information**  
 Lab No: 02570286  
 Analyst: LYLE HOFFMAN  
 Sample Date: 05/23/07  
 Received Date: 07/14/23  
 Completed: 08/15/23  
 LYLE HOFFMAN  
 lyle.hoffman@HFSinclair.com

Recommendation: With the acid number way higher than expected should be .1 to .3 and it is .97 recommend flush and resample.

Comments: Acid Number (AN) is severely high.

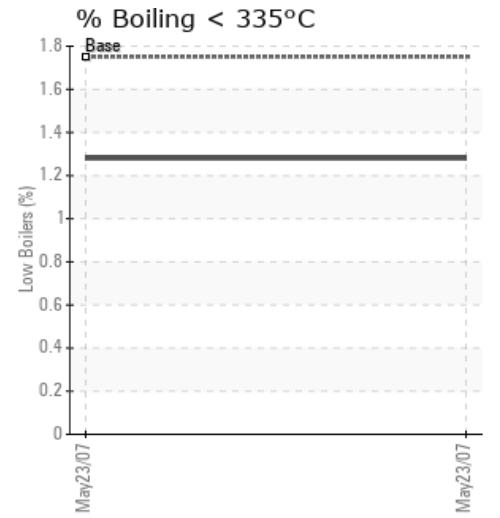
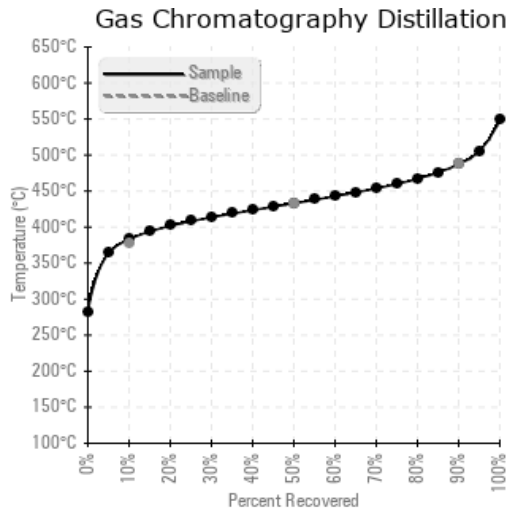
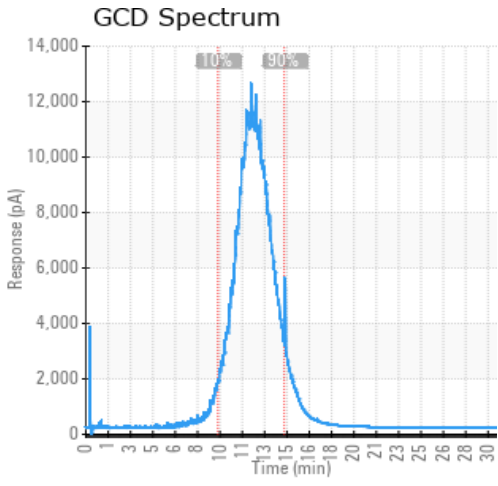
Sample Date	Received Date	Fluid Age	Sample Location	Flash Point (COC)	Water (KF)	Viscosity (40°C)	Acid Number	Solids	GCD 10%	GCD 50%	GCD 90%	GCD % < 335°C
	mm/dd/yy			°F/°C	ppm	cSt	mg/KOH/g	%wt	°F/°C	°F/°C	°F/°C	%
05/23/07	07/14/23	0.0d		446 / 230	7.4	34.7	0.97	0.097	721 / 383	811 / 433	909 / 487	1.28
Baseline Data				448 / 231		35.20	.1		712 / 378	810 / 432	910 / 488	1.75





Sample Date	Iron	Chromium	Nickel	Aluminum	Copper	Lead	Tin	Cadmium	Silver	Vanadium	Silicon	Sodium	Potassium	Titanium	Molybdenum	Antimony	Manganese	Lithium	Boron	Magnesium	Calcium	Barium	Phosphorus	Zinc	
05/23/07	0	0	0	0	2	0	0	0	0	0	7	0	0	0	0	0	0	0	0	0	0	0	0	227	2
<b>Baseline Data</b>			0	0						0			0	0				0	0					280	

Elemental analysis results (above) in parts per million (ppm). [10,000 ppm = 1.0%]



### Historical Comments


Petro-Canada makes no representation or warranty of any kind, either express or implied, as to the accuracy or completeness of the analysis and assumes no responsibility and shall have no liability whatsoever with respect to such analysis, or a party's use of it. Petro-Canada is a division of HollyFrontier Corporation.