

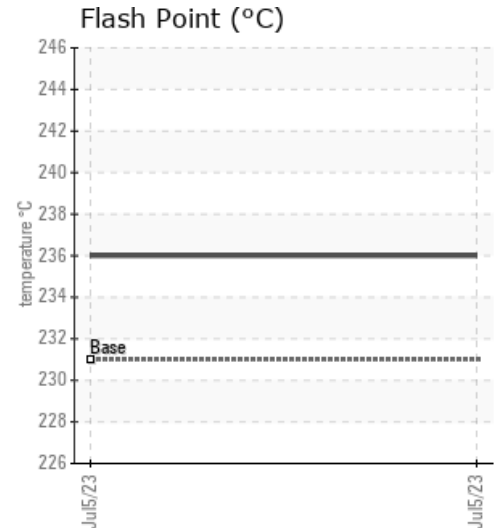
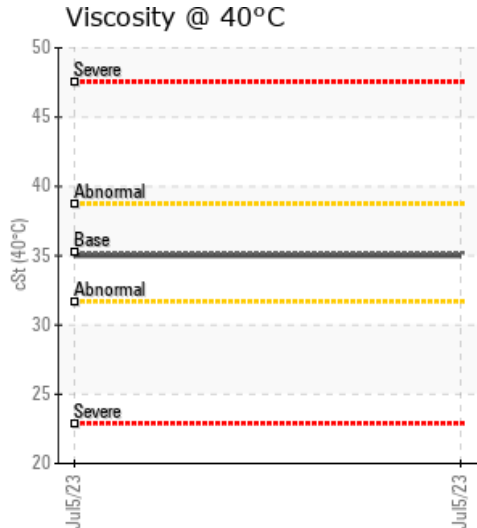
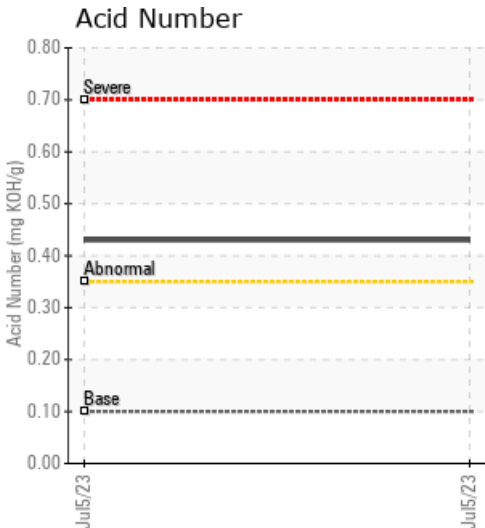
# HTU63

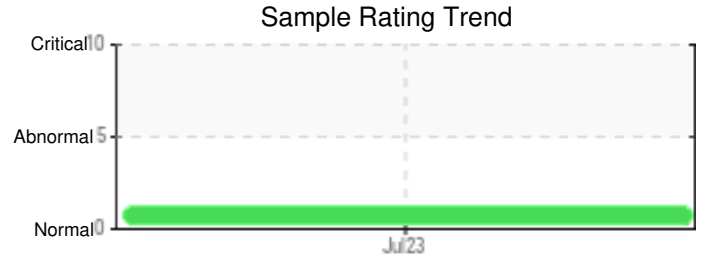
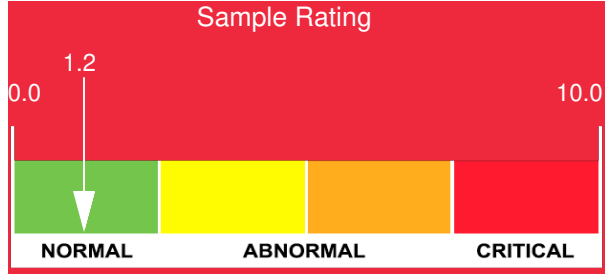
Customer: PTRHTF10194	System Information	Sample Information
HEXCEL 6700 W 5400 S SALT LAKE CITY, UT 84118 US Attn: Ted Housel Tel: (801)201-2083 E-Mail: ted.housel@hexcel.com	System Volume: 40 gal Bulk Operating Temp: 428F / 220C Heating Source: Blanket: Fluid: PETRO CANADA CALFLO HTF Make: HEXCEL	Lab No: 02570287 Analyst: LYLE HOFFMAN Sample Date: 07/05/23 Received Date: 07/14/23 Completed: 08/15/23 LYLE HOFFMAN lyle.hoffman@HFSinclair.com

Recommendation: Fluid has degraded but still has life. Resample in 6 months

Comments: Acid Number (AN) is abnormally high.

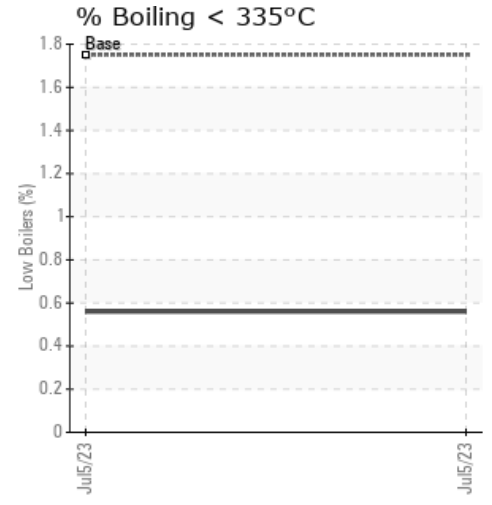
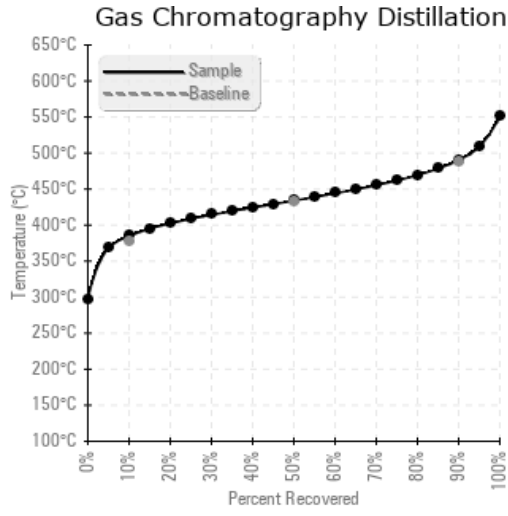
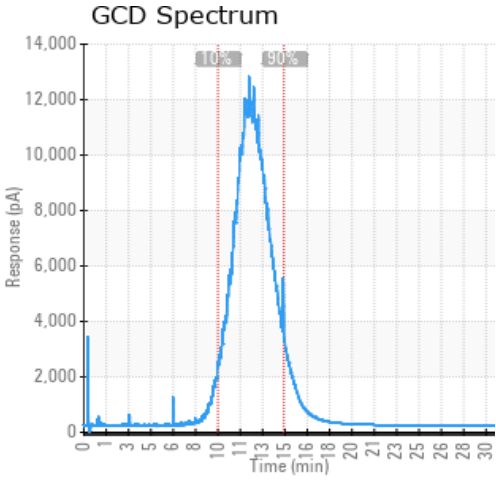
Sample Date	Received Date	Fluid Age	Sample Location	Flash Point (COC)	Water (KF)	Viscosity (40°C)	Acid Number	Solids	GCD 10%	GCD 50%	GCD 90%	GCD % < 335°C
	mm/dd/yy			°F/°C	ppm	cSt	mg/KOH/g	%wt	°F/°C	°F/°C	°F/°C	%
07/05/23	07/14/23	0.0d		457 / 236	4.5	35.0	0.43	0.129	724 / 385	813 / 434	915 / 490	0.56
Baseline Data				448 / 231		35.20	.1		712 / 378	810 / 432	910 / 488	1.75





Sample Date	Iron	Chromium	Nickel	Aluminum	Copper	Lead	Tin	Cadmium	Silver	Vanadium	Silicon	Sodium	Potassium	Titanium	Molybdenum	Antimony	Manganese	Lithium	Boron	Magnesium	Calcium	Barium	Phosphorus	Zinc	
07/05/23	0	0	0	0	0	0	0	0	0	0	2	0	0	0	0	0	0	0	0	0	0	0	0	183	1
<b>Baseline Data</b>			0	0						0			0	0				0	0					280	

Elemental analysis results (above) in parts per million (ppm). [10,000 ppm = 1.0%]



### Historical Comments


Petro-Canada makes no representation or warranty of any kind, either express or implied, as to the accuracy or completeness of the analysis and assumes no responsibility and shall have no liability whatsoever with respect to such analysis, or a party's use of it. Petro-Canada is a division of HollyFrontier Corporation.