

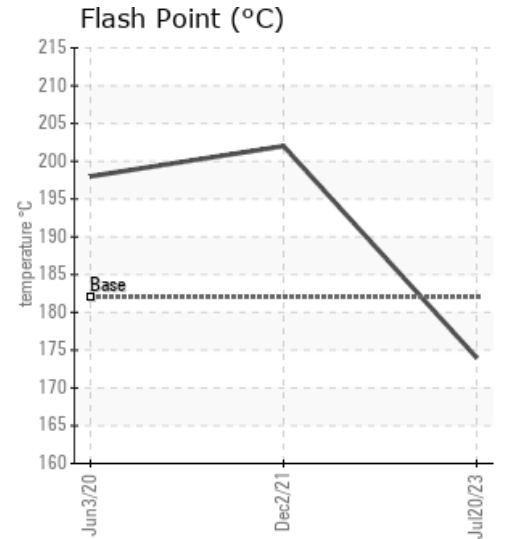
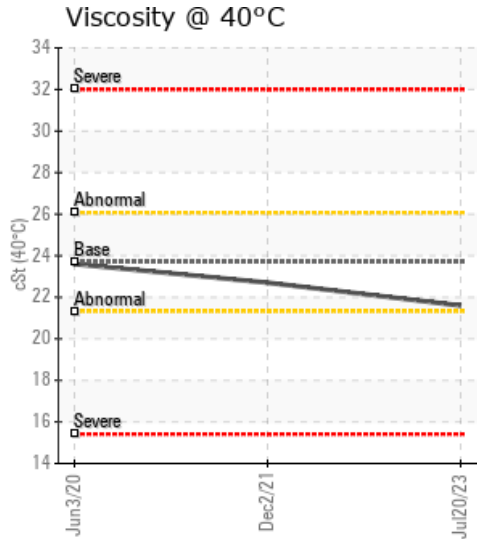
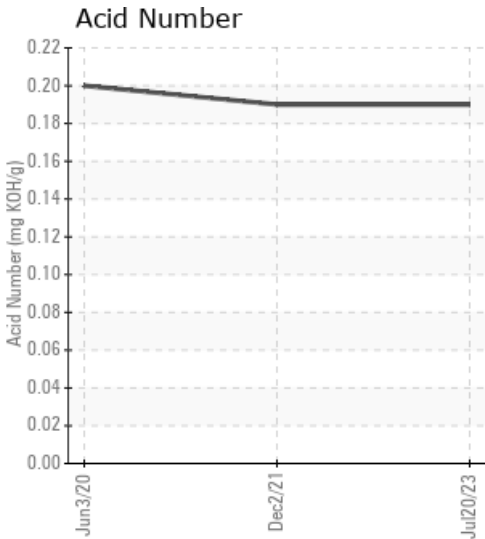
## THAI FOOD (THAILAND)

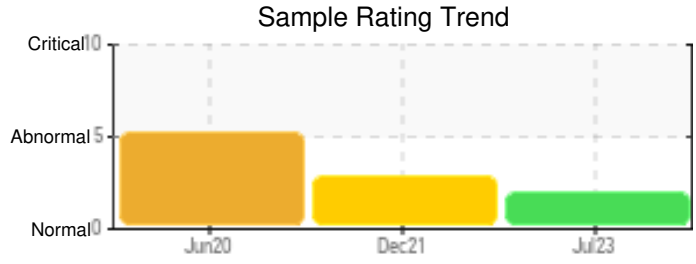
Customer: PTRHTF60010	System Information	Sample Information
SYNLUBE INTERNATIONAL CO LTD 76/1 MOO.7 THACHIN MUANG SAMUTSAKHON, 74000 TH Attn: CHERNPORN CHOBKUI Tel: 034421290 E-Mail: chernporn@synlube.co.th	System Volume: 17750 ltr Bulk Operating Temp: 554F / 290C Heating Source: Blanket: Fluid: EASTMAN THERMINOL XP Make: WANSON	Lab No: 02574688 Analyst: Bill Quesnel CLS,OMA II,MLA-III,LLA-I Sample Date: 07/20/23 Received Date: 08/08/23 Completed: 08/30/23 Bill Quesnel CLS,OMA II,MLA-III,LLA-I

Recommendation: The fluid is suitable for further service. Resample at the next service interval to monitor.

Comments: (GCD) 90% Distillation Point is severely high.

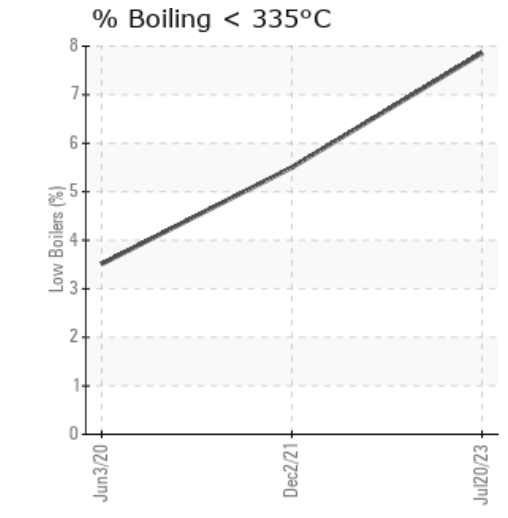
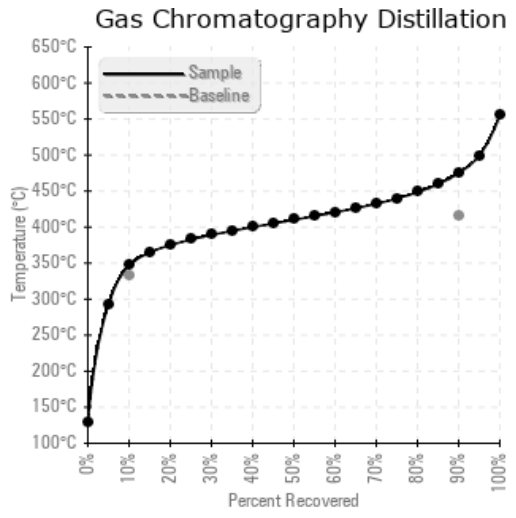
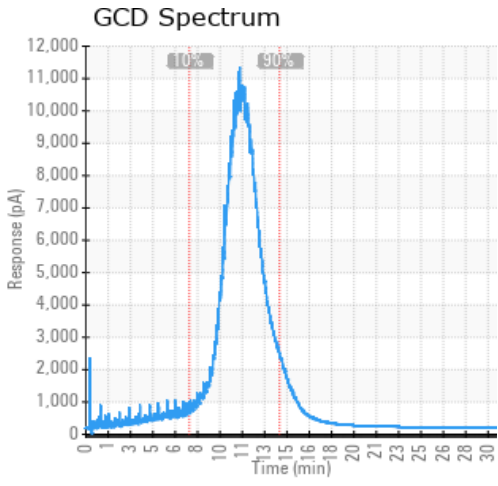
Sample Date	Received Date	Fluid Age	Sample Location	Flash Point (COC)	Water (KF)	Viscosity (40°C)	Acid Number	Solids	GCD 10%	GCD 50%	GCD 90%	GCD % < 335°C
	mm/dd/yy			°F/°C	ppm	cSt	mg/KOH/g	%wt	°F/°C	°F/°C	°F/°C	%
07/20/23	08/08/23	66.0m		345 / 174	11.7	21.6	0.19	0.043	656 / 347	770 / 410	887 / 475	7.86
12/02/21	12/21/21	4.0m		396 / 202	9.3	22.7	0.19	0.060	677 / 359	772 / 411	885 / 474	5.50
06/03/20	06/24/20	0.0m	SUPPLY	388 / 198	26.5	23.6	0.20	0.107	690 / 366	775 / 413	883 / 473	3.51
Baseline Data				360 / 182		23.7			630 / 332		781 / 416	





Sample Date	Iron	Chromium	Nickel	Aluminum	Copper	Lead	Tin	Cadmium	Silver	Vanadium	Silicon	Sodium	Potassium	Titanium	Molybdenum	Antimony	Manganese	Lithium	Boron	Magnesium	Calcium	Barium	Phosphorus	Zinc
07/20/23	0	0	0	0	0	0	0	0	0	0	0	0	0	0	0	0	0	0	0	0	0	0	0	1
12/02/21	3	0	0	0	0	0	0	0	0	0	0	0	0	0	0	0	0	0	0	0	0	0	0	0
06/03/20	8	0	0	0	0	0	0	0	0	0	0	0	0	0	0	0	0	0	0	0	0	0	0	0
Baseline Data			0	0						0			0	0					0				0	

Elemental analysis results (above) in parts per million (ppm). [10,000 ppm = 1.0%]



### Historical Comments

12/02/21	Not Petro-Canada Lubricants product therefore unfamiliar with the chemistry. Most parameters seem in line with previous samples. (GCD) 90% Distillation Point is severely high. (GCD) 10% Distillation Point is abnormally high.
06/03/20	Not at Petro-Canada fluid and have no insight into the chemistry to compare and diagnose accurately. There are flags on the Distillation and there is a build of insolubles in the fluid. (GCD) 10% Distillation Point is severely high. (GCD) 90% Distillation Point is severely high.

Petro-Canada makes no representation or warranty of any kind, either express or implied, as to the accuracy or completeness of the analysis and assumes no responsibility and shall have no liability whatsoever with respect to such analysis, or a party's use of it. Petro-Canada is a division of HollyFrontier Corporation.