

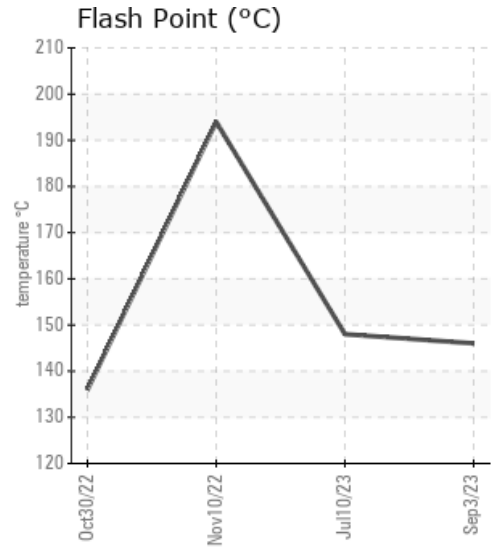
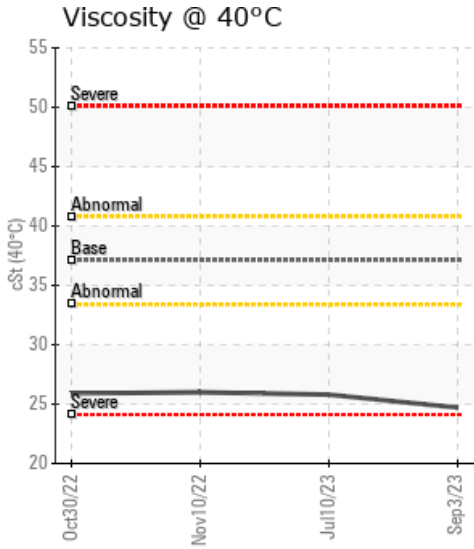
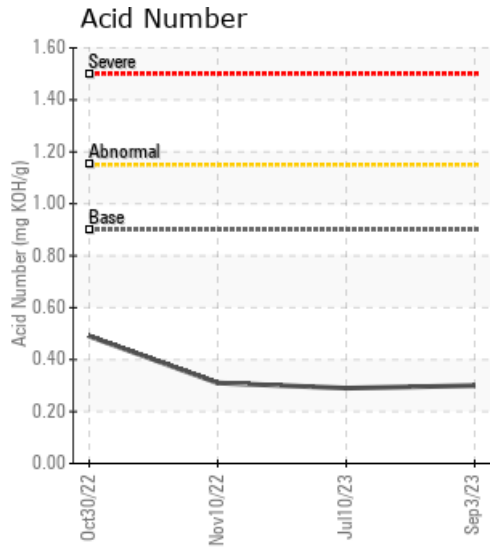
GFPT THAILAND LINE 2/3/4

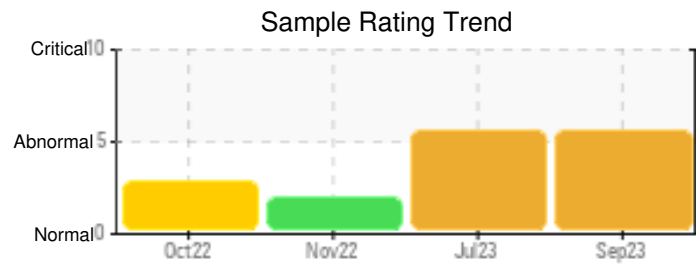
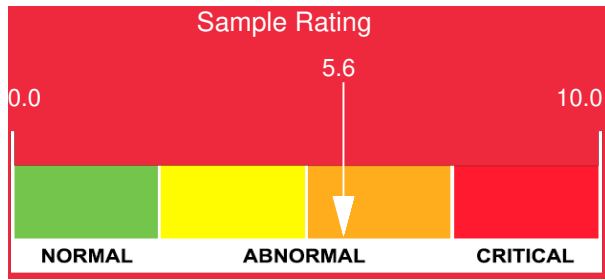
| Customer: PTRHTF60010 | System Information | Sample Information |
|---|--|--|
| SYNLUBE INTERNATIONAL CO LTD 76/1 MOO.7 THACHIN MUANG SAMUTSAKHON, 74000 TH Attn: CHERNPORN CHOBKUI Tel: 034421290 E-Mail: chernporn@synlube.co.th | System Volume: 16000 ltr Bulk Operating Temp: 554F / 290C Heating Source: Blanket: Fluid: PETRO CANADA PURITY FG HEAT TRANSFER FLUID Make: WANSON | Lab No: 02582354 Analyst: Bill Quesnel CLS,OMA II,MLA-III,LLA-I Sample Date: 09/03/23 Received Date: 09/13/23 Completed: 09/18/23 Bill Quesnel CLS,OMA II,MLA-III,LLA-I |

Recommendation: We recommend that you vent the expansion tank to remove low boilers which assists in restoring the flash point of the fluid. We recommend an early resample to monitor this condition.

Comments: COC Flash Point is severely low. Visc @ 40°C is abnormally low. (GCD) 90% Distillation Point is marginally high.

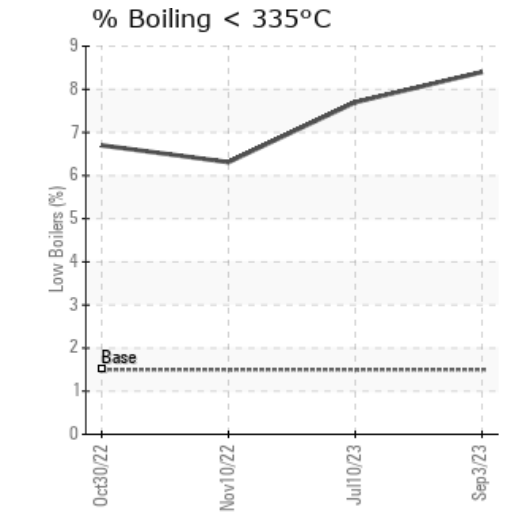
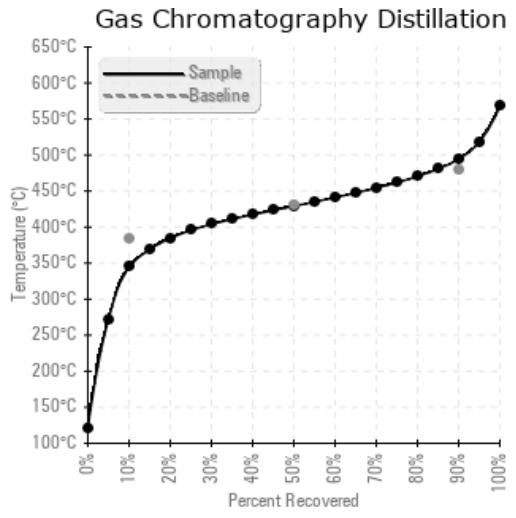
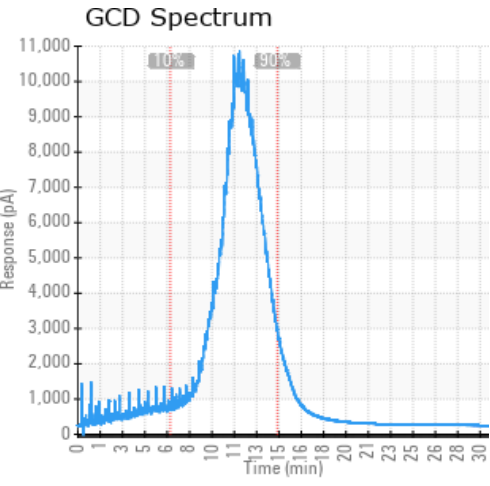
| Sample Date | Received Date | Fluid Age | Sample Location | Flash Point (COC) | Water (KF) | Viscosity (40°C) | Acid Number | Solids | GCD 10% | GCD 50% | GCD 90% | GCD % < 335°C |
|---------------|---------------|-----------|-----------------|-------------------|------------|------------------|-------------|--------|-----------|-----------|-----------|---------------|
| | mm/dd/yy | | | °F/°C | ppm | cSt | mg/KOH/g | %wt | °F/°C | °F/°C | °F/°C | % |
| 09/03/23 | 09/13/23 | 29.0m | | 295 / 146 | 18.1 | 24.7 | 0.30 | 0.033 | 652 / 345 | 804 / 429 | 922 / 494 | 8.40 |
| 07/10/23 | 07/14/23 | 27.0m | supply return | 298 / 148 | 22.2 | 25.8 | 0.29 | 0.083 | 661 / 350 | 806 / 430 | 921 / 494 | 7.70 |
| 11/10/22 | 12/22/22 | 18.0m | | 381 / 194 | 17.3 | 26.0 | 0.31 | 0.020 | 679 / 359 | 811 / 433 | 924 / 496 | 6.31 |
| 10/30/22 | 11/15/22 | 17.0m | SUPPLYRETURN | 277 / 136 | 21.4 | 25.9 | 0.49 | 0.167 | 675 / 357 | 807 / 431 | 918 / 492 | 6.70 |
| Baseline Data | | | | 459 / 237 | | 37.12 | 0.90 | | 721 / 383 | 807 / 431 | 892 / 478 | 1.5 |





| Sample Date | Iron | Chromium | Nickel | Aluminum | Copper | Lead | Tin | Cadmium | Silver | Vanadium | Silicon | Sodium | Potassium | Titanium | Molybdenum | Antimony | Manganese | Lithium | Boron | Magnesium | Calcium | Barium | Phosphorus | Zinc | |
|---------------|------|----------|--------|----------|--------|------|-----|---------|--------|----------|---------|--------|-----------|----------|------------|----------|-----------|---------|-------|-----------|---------|--------|------------|------|---|
| 09/03/23 | 0 | 0 | 0 | 0 | 0 | 0 | 0 | 0 | 0 | 0 | 0 | 0 | 0 | 0 | 0 | 0 | 0 | 0 | 0 | 0 | 0 | 0 | 17 | 1 | |
| 07/10/23 | 0 | 0 | 0 | 0 | 0 | 0 | 0 | 0 | 0 | 0 | 0 | 0 | 0 | 0 | 0 | 0 | 0 | 0 | 0 | 0 | 0 | 0 | 0 | 17 | 1 |
| 11/10/22 | 2 | 0 | 0 | 0 | 0 | 0 | 0 | 0 | 0 | 0 | 0 | 0 | 0 | 0 | 0 | 0 | 0 | 0 | 0 | 0 | 0 | 0 | 0 | 19 | 0 |
| 10/30/22 | 1 | 0 | 0 | 0 | 0 | 0 | 0 | 0 | 0 | 0 | 0 | 0 | 0 | 0 | 0 | 0 | 0 | 0 | 0 | 0 | 0 | 0 | 0 | 17 | 0 |
| Baseline Data | | | 0 | 0 | | | | | | 0 | | | 0 | 0 | | | | 0 | 0 | | | | | 230 | |

Elemental analysis results (above) in parts per million (ppm). [10,000 ppm = 1.0%]



| Historical Comments | |
|---------------------|--|
| 07/10/23 | We recommend that you vent the expansion tank to remove low boilers which assists in restoring the flash point of the fluid. We recommend an early resample to monitor this condition. COC Flash Point is severely low. Visc @ 40°C is abnormally low. (GCD) 90% Distillation Point is marginally high. |
| 11/10/22 | The flash point has recovered significantly. We recommend that you continue to vent the expansion tank to remove low boilers every month. We recommend an early resample to continue to monitor this condition. (GCD) 90% Distillation Point is abnormally high. Visc @ 40°C is abnormally low. COC Flash Point is marginally low. |
| 10/30/22 | We recommend that you vent the expansion tank to remove low boilers which assists in restoring the flash point of the fluid. We recommend an early resample to monitor this condition. COC Flash Point is severely low. Visc @ 40°C is abnormally low. (GCD) 90% Distillation Point is marginally high. |

Petro-Canada makes no representation or warranty of any kind, either express or implied, as to the accuracy or completeness of the analysis and assumes no responsibility and shall have no liability whatsoever with respect to such analysis, or a party's use of it. Petro-Canada is a division of HollyFrontier Corporation.