

[ASPEN LEAF ENERGY / 10-22-50-26W4] H6205

Customer: PTRHTF20174
 Quadra Chemicals
 700 4th Ave S.W Suite 470
 Calgary, AB T2P 3J4 CA
 Attn: Quadra Samples
 Tel:
 E-Mail: quadra_samples@quadra.ca

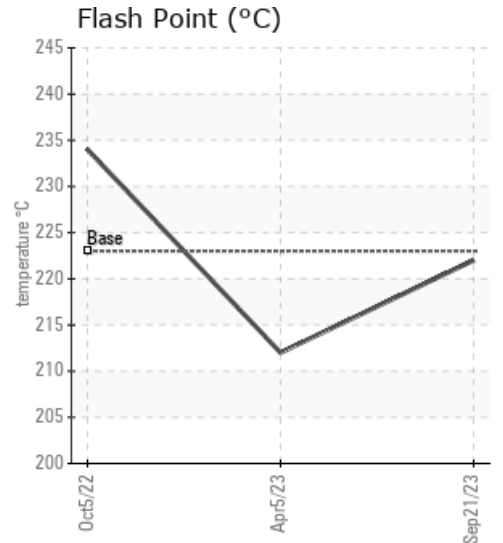
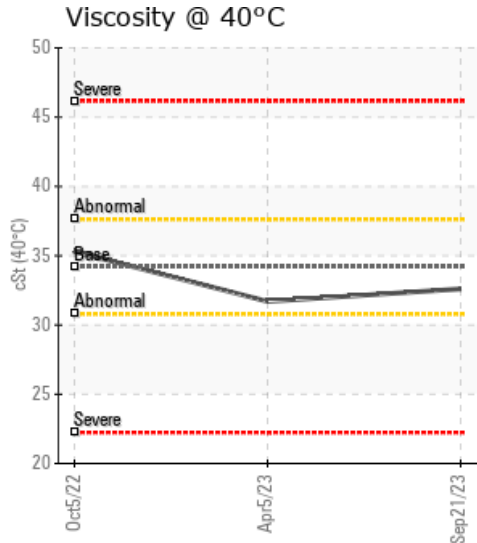
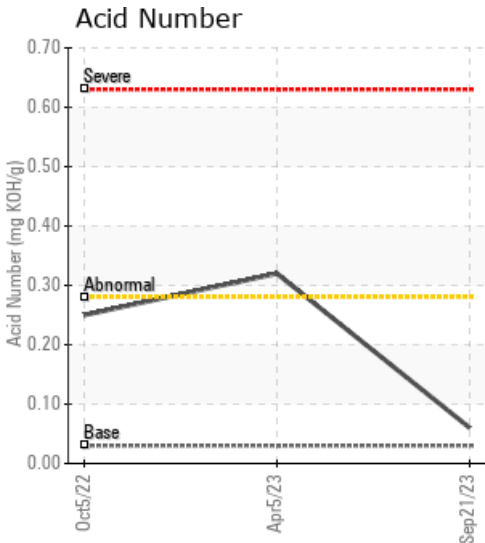
System Information
 System Volume: 24000 ltr
 Bulk Operating Temp: 356F / 180C
 Heating Source:
 Blanket:
 Fluid: PETRO CANADA PETRO-THERM
 Make: S BLUE PROCESS

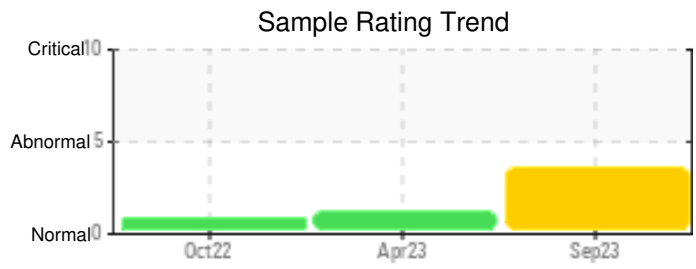
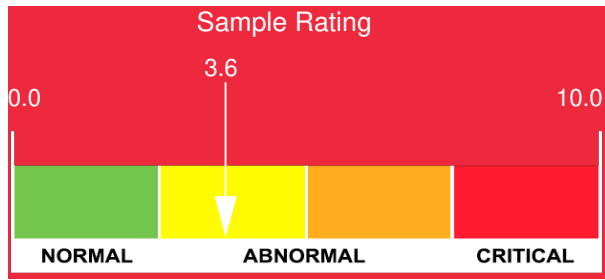
Sample Information
 Lab No: 02586552
 Analyst: Lyle Dach
 Sample Date: 09/21/23
 Received Date: 10/03/23
 Completed: 10/04/23
 Lyle Dach
 lyle.dach@HFSinclair.com

Recommendation: Water content up - it would be best to boil off excess water and vent the steam to ensure there are no unwanted boil overs and reduce the corrosion risk. Ensure blanket gas is function properly and no points are open to allow water to access the system. Fluid condition looks to be suitable for continued use once water has been reduced down to acceptable levels. Resample after venting has been completed.

Comments: Water contamination levels are marginally high. Water contamination levels are marginally high.. ppm Water contamination levels are marginally high.

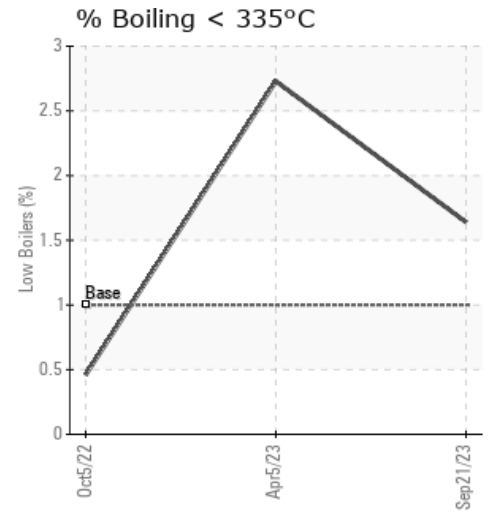
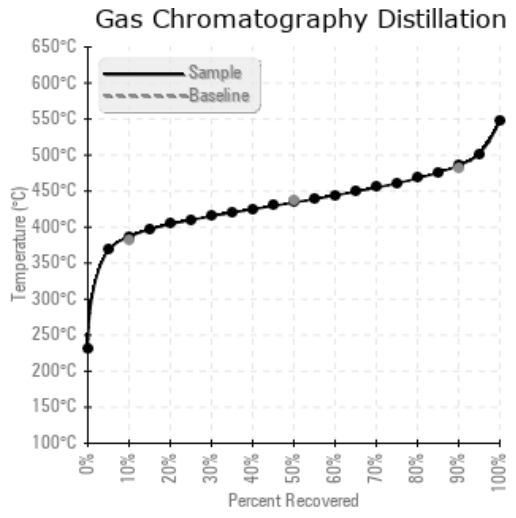
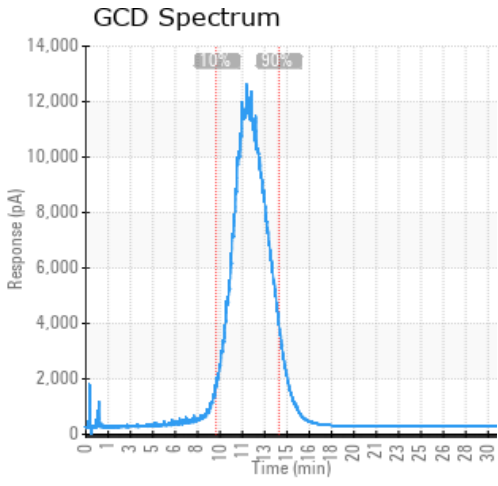
Sample Date	Received Date	Fluid Age	Sample Location	Flash Point (COC)	Water (KF)	Viscosity (40°C)	Acid Number	Solids	GCD 10%	GCD 50%	GCD 90%	GCD % < 335°C
	mm/dd/yy			°F/°C	ppm	cSt	mg/KOH/g	%wt	°F/°C	°F/°C	°F/°C	%
09/21/23	10/03/23	52.0w		432 / 222	350.4	32.6	0.06	0.042	728 / 387	814 / 434	906 / 486	1.64
04/05/23	04/18/23	0.0w		414 / 212	40.0	31.7	0.32	0.211	728 / 386	822 / 439	917 / 492	2.73
10/05/22	10/25/22	1.0w	new unit	453 / 234	23.5	35.3	0.25	0.114	743 / 395	827 / 442	922 / 494	0.46
Baseline Data				433 / 223		34.2	0.03		720 / 382	817 / 436	900 / 482	1.00





Sample Date	Iron	Chromium	Nickel	Aluminum	Copper	Lead	Tin	Cadmium	Silver	Vanadium	Silicon	Sodium	Potassium	Titanium	Molybdenum	Antimony	Manganese	Lithium	Boron	Magnesium	Calcium	Barium	Phosphorus	Zinc
09/21/23	0	0	0	0	0	0	0	0	0	0	0	0	0	0	0	0	0	0	0	0	0	0	0	0
04/05/23	13	0	0	0	0	0	0	0	0	0	0	0	0	0	0	0	0	0	0	0	0	0	0	0
10/05/22	20	0	0	0	0	0	0	0	0	0	0	0	0	0	0	0	0	0	0	0	0	0	0	0
Baseline Data			0	0						0			0	0					0				0	

Elemental analysis results (above) in parts per million (ppm). [10,000 ppm = 1.0%]



Historical Comments	
04/05/23	Acid number climbed slightly and viscosity has dropped slightly. Confirm blanket gas is functioning properly. Resample in 6 months to confirm fluid condition. If acid number continues to rise consider sweetening the system with new fluid until a complete change out can be planned. Acid number tends to increase exponentially and has potential for increased sludge deposits and system corrosion. All other parameters appear to be at acceptable levels for continued use. Acid Number (AN) is abnormally high.
10/05/22	Sample results indicate that the fluid is in suitable condition for continued service. 90% distillation point is slightly high, ensure blanket gas is on and functioning properly. Resample in 12 months. (GCD) 90% Distillation Point is marginally high.

Petro-Canada makes no representation or warranty of any kind, either express or implied, as to the accuracy or completeness of the analysis and assumes no responsibility and shall have no liability whatsoever with respect to such analysis, or a party's use of it. Petro-Canada is a division of HollyFrontier Corporation.